

# GRANT COUNTY CERTIFIED LAND CORNER

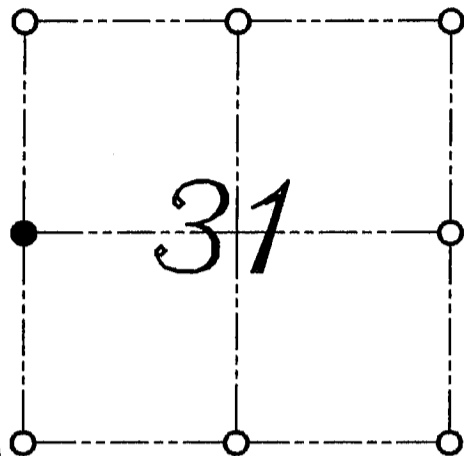
**CERTIFICATE:**

I, LARRY L. AUSTIN, DO HEREBY CERTIFY THAT ON THIRTIETH DAY OF APRIL, 1999, I FOUND NO EVIDENCE OF THE WEST 1/4 CORNER OF SECTION 31, TOWN 3 NORTH, RANGE 1 WEST, OF THE FOURTH PRINCIPAL MERIDIAN, AND I RE-ESTABLISHED SAID CORNER ACCORDING TO THE WISCONSIN STATUTES AS SHOWN AND DESCRIBED HEREON.

DATED THIS TWENTY-SECOND DAY OF MAY, 1999

*Larry L. Austin*  
LARRY L. AUSTIN S-1903

CORNER NUMBER 114



● = CORNER LOCATION

WEST 1/4 CORNER OF SECTION 31, T 3 N R 1 W TOWN OF PLATTEVILLE

**HISTORY OF ORIGINAL CORNER ESTABLISHMENT:**

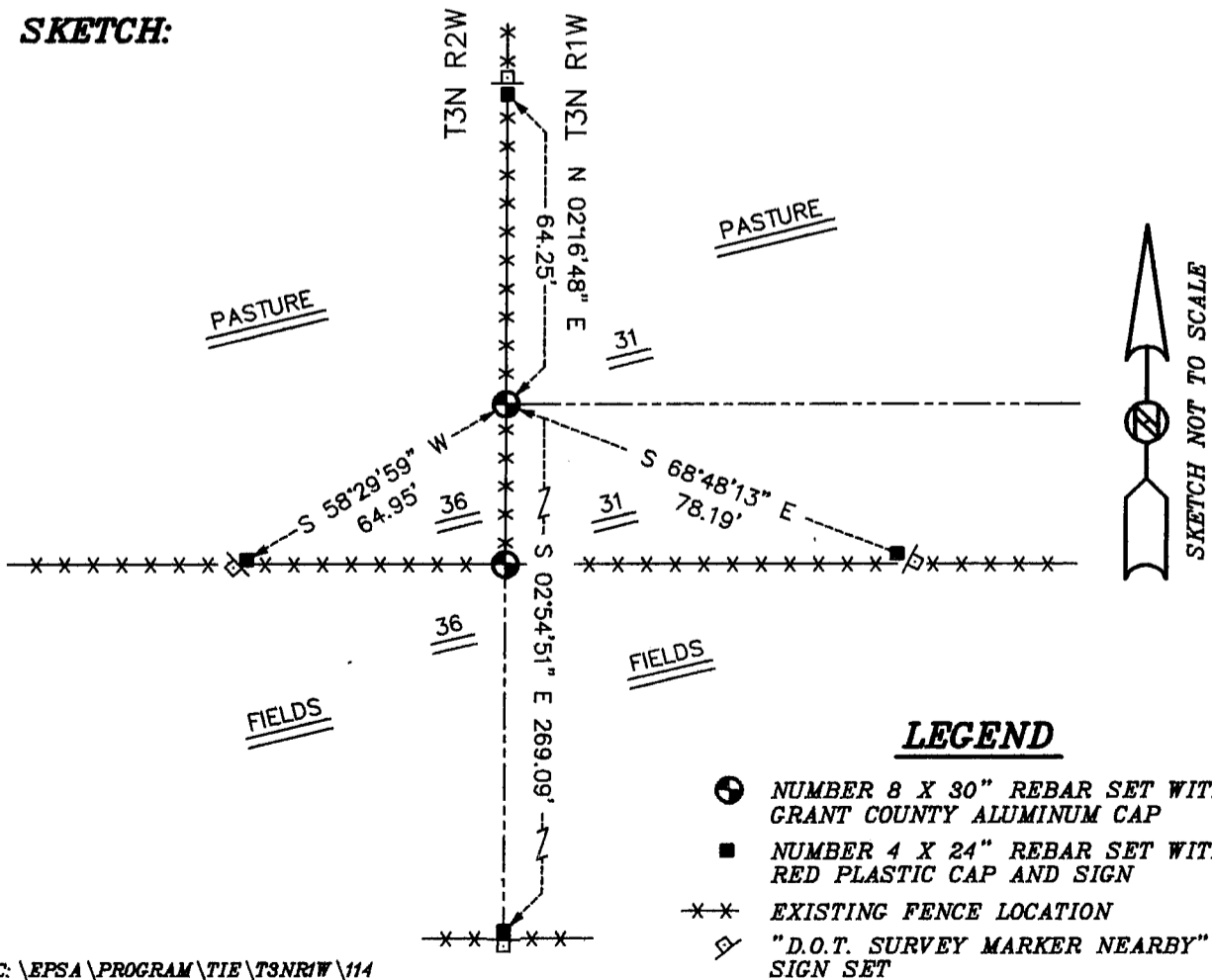
CORNER WAS NEVER ORIGINALLY SET.

**DESCRIPTION OF CORNER EVIDENCE FOUND:**

I SET THE CORNER AT THE PROPORTIONED OFFSET ON THE EAST LINE OF THE NORTHEAST 1/4 OF SECTION 36. VERIFIED THIS LOCATION USING E.D.M. AND G.P.S. METHODS.

**DESCRIPTION OF CORNER AND WITNESS MONUMENTS, REFERENCES AND ACCESSORIES USED TO PERPETUATE THE ORIGINAL OR RE-ESTABLISHED LOCATION OF THIS CORNER:**  
WITNESS TO THE CORNER LOCATION: BOBBY SEDGWICK ; SHELBY BLINDERT

**SKETCH:**



**LEGEND**

- NUMBER 8 X 30" REBAR SET WITH GRANT COUNTY ALUMINUM CAP
- NUMBER 4 X 24" REBAR SET WITH RED PLASTIC CAP AND SIGN
- xx EXISTING FENCE LOCATION
- ⊠ "D.O.T. SURVEY MARKER NEARBY" SIGN SET