

# GRANT COUNTY CERTIFIED LAND CORNER

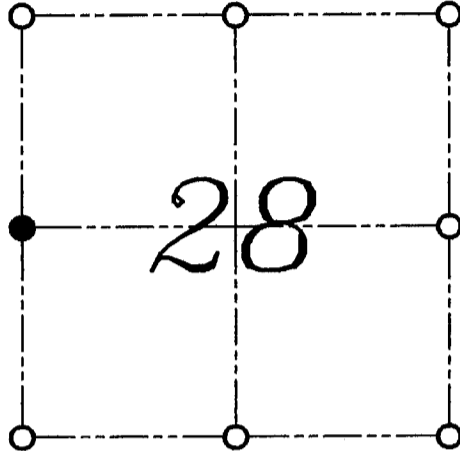
CORNER NUMBER 96

**CERTIFICATE:**

I, LARRY L. AUSTIN, DO HEREBY CERTIFY THAT ON TWELFTH DAY OF MAY, 1999, I FOUND MONUMENTED EVIDENCE OF THE WEST 1/4 CORNER SECTION 28 TOWN 3 NORTH, RANGE 1 WEST, OF THE FOURTH PRINCIPAL MERIDIAN, AND I RE-ESTABLISHED SAID CORNER ACCORDING TO THE WISCONSIN STATUTES AS SHOWN AND DESCRIBED HEREON.

DATED THIS TWENTY-SECOND DAY OF MAY, 1999

*Larry L. Austin*  
LARRY L. AUSTIN S-1903



● = CORNER LOCATION  
WEST 1/4 CORNER OF  
SECTION 28, T 3 N R 1 W  
TOWN OF PLATTEVILLE

**HISTORY OF ORIGINAL CORNER ESTABLISHMENT:**

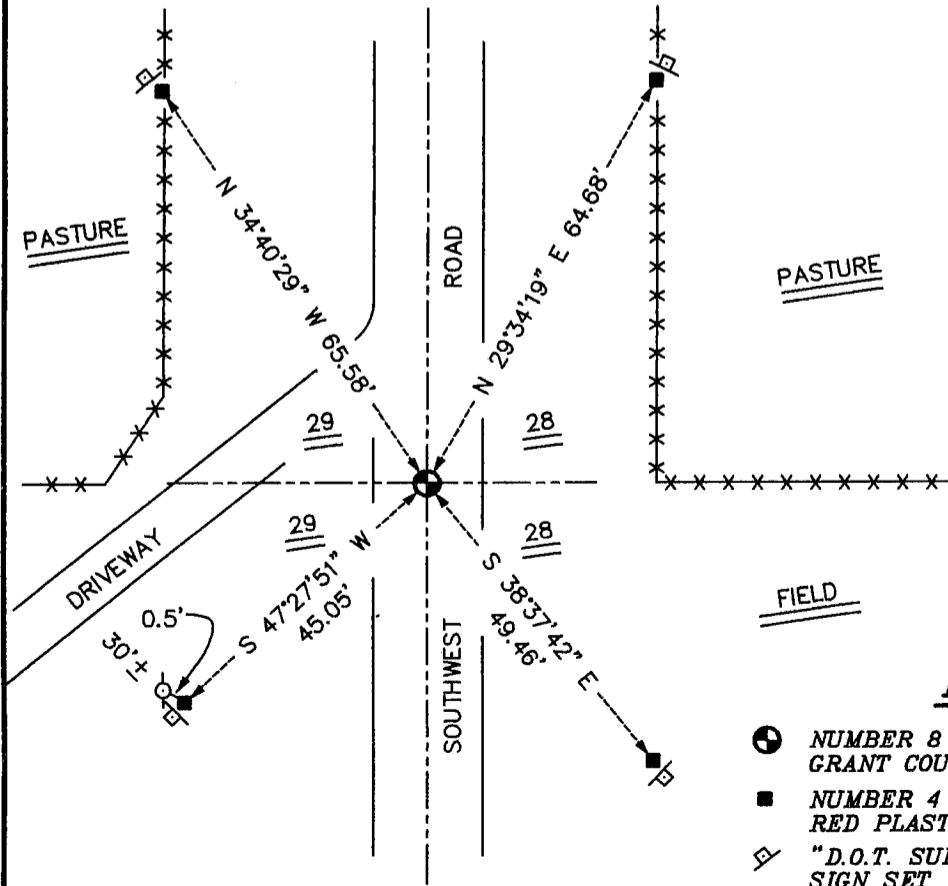
CORNER WAS SET IN 1833 BY ROBERT CLARK. I FOUND AN EXISTING RAILROAD SPIKE AND TIED IT OUT IN 1995.

**DESCRIPTION OF CORNER EVIDENCE FOUND:**

I FOUND THE EXISTING RAILROAD SPIKE AND SET A 1" BY 30" IRON BAR AND NEW TIES. VERIFIED THIS LOCATION USING E.D.M. AND G.P.S. METHODS.

**DESCRIPTION OF CORNER AND WITNESS MONUMENTS, REFERENCES AND ACCESSORIES USED TO PERPETUATE THE ORIGINAL OR RE-ESTABLISHED LOCATION OF THIS CORNER:**  
WITNESS TO THE CORNER LOCATION: BOBBY SEDGWICK ; SHELBY BLINDERT

**SKETCH:**



**LEGEND**

- NUMBER 8 X 30" REBAR SET WITH GRANT COUNTY ALUMINUM CAP
- NUMBER 4 X 24" REBAR SET WITH RED PLASTIC CAP AND SIGN
- ⊠ "D.O.T. SURVEY MARKER NEARBY" SIGN SET
- \*-\* EXISTING FENCE LOCATION

# GRANT COUNTY

## Survey Monument Record

CORNER NO. \_\_\_\_\_  
 SECTION 29  
 TOWN 3N  
 RANGE 1W

TYPE OF MONUMENT RAILROAD SPIKE  
 STATE PLANE COORDINATES: N \_\_\_\_\_  
 E \_\_\_\_\_  
 ELEVATION — M.S.L. DATUM: \_\_\_\_\_  
 THETA ANGLE: \_\_\_\_\_  
 FIELD BOOK: 92-12  
 PAGE \_\_\_\_\_



LOCATION  
(Indicated by "X")

### BASIS FOR MONUMENT LOCATION

(Use reverse side if necessary)

Show info such as: History of corner, with reference to Vol. and pg., dates, surveyor; exact description of monument replaced; if location computed, by taped or EDM traverse; landowner, remarks, etc.

SEAL:



FOUND A RAILROAD SPIKE IN & OF TWP. ROAD AND ACCEPTED ITS LOCATION; SPIKE WAS USED IN 1982 SURVEY BY HALVERSON & 1985 SURVEY BY BOWDEN. EDM METHODS USED.

CERTIFIED CORRECT

*Larry L. Austin*  
 Registered Land Surveyor

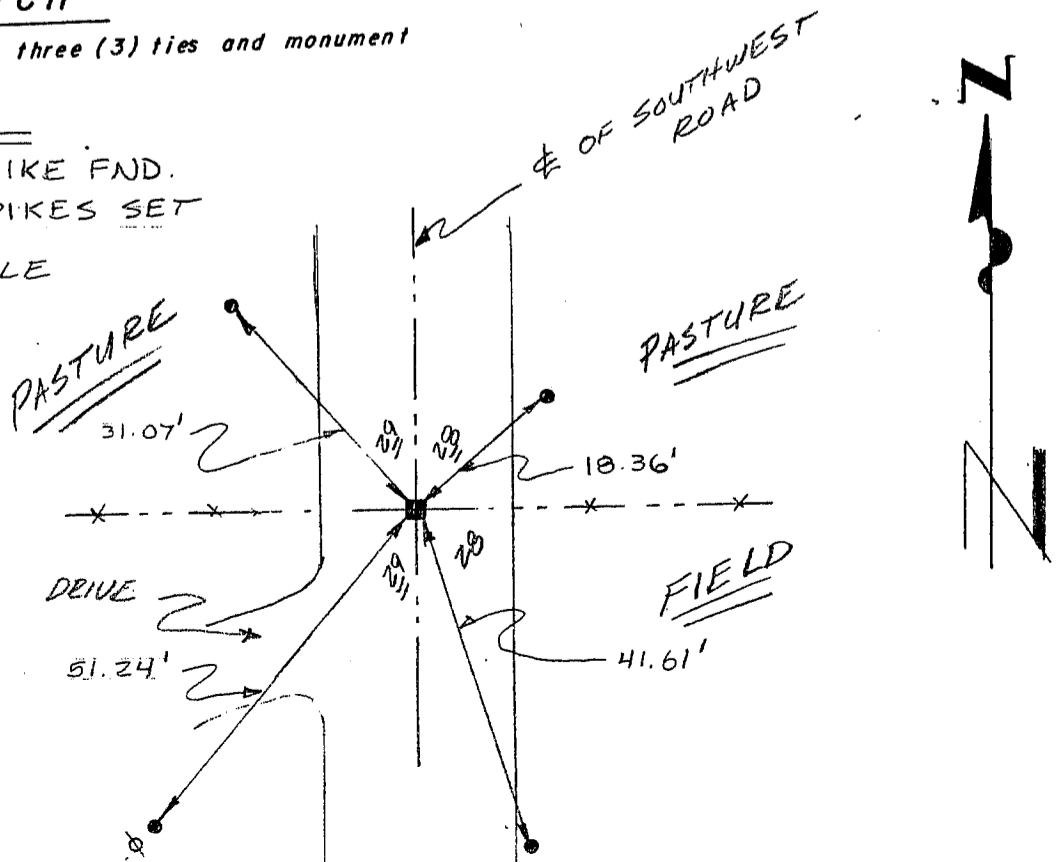
DATE: 2/7/94

### TIE SKETCH

Show at least three (3) ties and monument

#### LEGEND

- RAILROAD SPIKE FND.
- 3/8" x 12" SPIKES SET
- ⊕ POWER POLE



NO SCALE