

# GRANT COUNTY CERTIFIED LAND CORNER

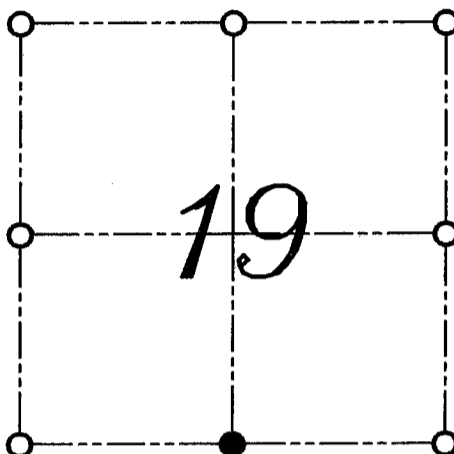
CORNER NUMBER 92

**CERTIFICATE:**

I, LARRY L. AUSTIN, DO HEREBY CERTIFY THAT ON TWENTY-FIFTH DAY OF JUNE, 1999, I FOUND HISTORICAL EVIDENCE OF THE SOUTH 1/4 CORNER SECTION 19, TOWN 3 NORTH, RANGE 1 WEST, OF THE FOURTH PRINCIPAL MERIDIAN, AND I RE-ESTABLISHED SAID CORNER ACCORDING TO THE WISCONSIN STATUTES AS SHOWN AND DESCRIBED HEREON.

DATED THIS FIRST DAY OF JULY, 1999

*Larry L. Austin*  
LARRY L. AUSTIN S-1903



● = CORNER LOCATION  
SOUTH 1/4 CORNER OF  
SECTION 19, T 3 N R 1 W  
TOWN OF PLATTEVILLE

**HISTORY OF ORIGINAL CORNER ESTABLISHMENT:**

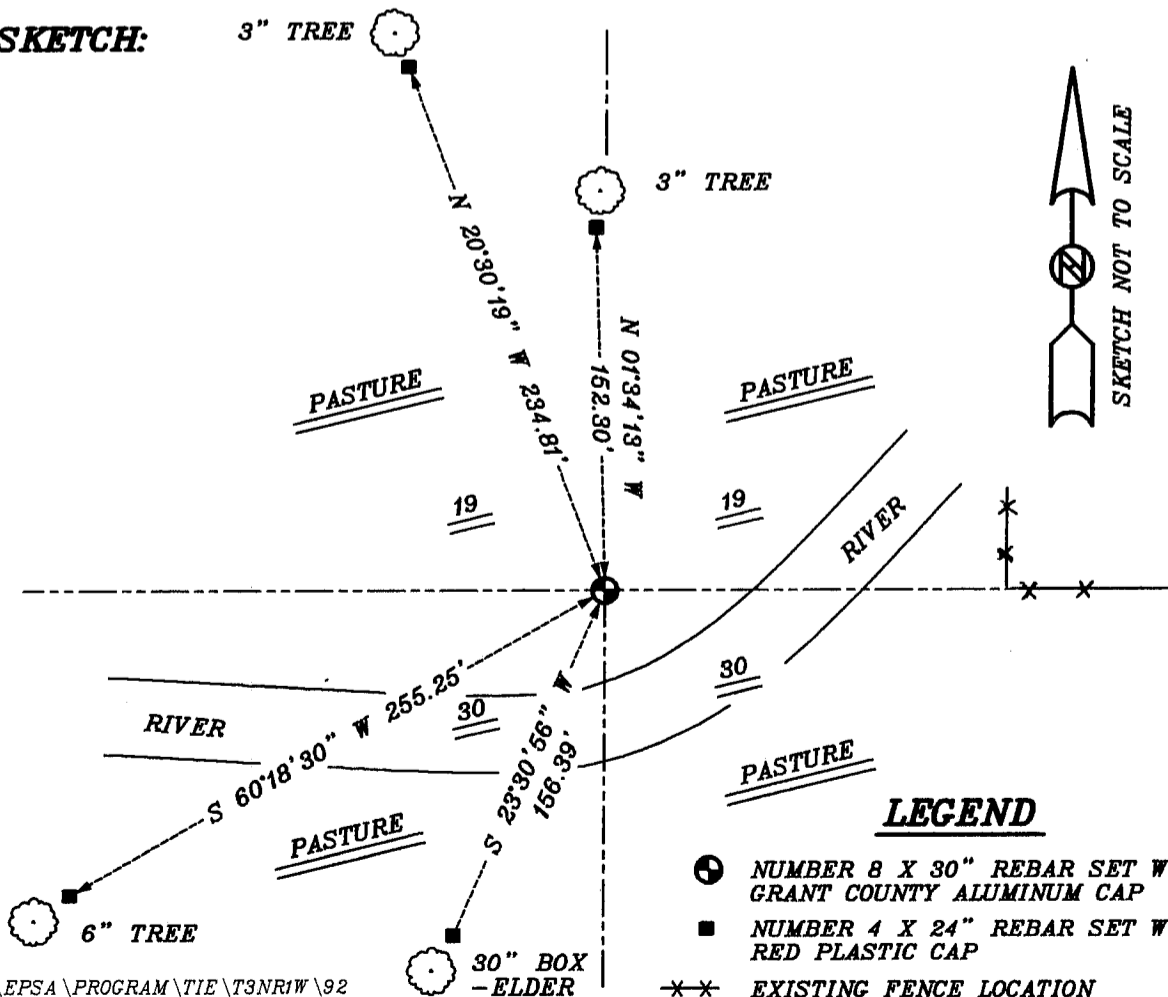
CORNER WAS SET IN 1833 BY ROBERT CLARK. IN 1992 I FOUND THE CORNER TO BE IN THE PLATTE RIVER. (NO MONUMENT PLACED)

**DESCRIPTION OF CORNER EVIDENCE FOUND:**

I FOUND EVIDENCE OF THE SURVEY I DID AND FOUND THE RIVER TO HAVE MOVED. I SET THE CORNER BASED ON LOCAL SURVEY EVIDENCE. VERIFIED THIS LOCATION USING E.D.M. AND G.P.S. METHODS.

**DESCRIPTION OF CORNER AND WITNESS MONUMENTS, REFERENCES AND ACCESSORIES USED TO PERPETUATE THE ORIGINAL OR RE-ESTABLISHED LOCATION OF THIS CORNER:**  
WITNESS TO THE CORNER LOCATION: BOBBY SEDGWICK ; SHELBY BLINDERT

**SKETCH:**



**LEGEND**

- NUMBER 8 X 30" REBAR SET WITH GRANT COUNTY ALUMINUM CAP
- NUMBER 4 X 24" REBAR SET WITH RED PLASTIC CAP
- ×× EXISTING FENCE LOCATION

C:\EPSA\PROGRAM\TIE\T3NR1W\92