

# U.S. PUBLIC LAND SURVEY MONUMENT RECORD

## GRANT COUNTY, WISCONSIN

CORNER:  
NORTHEAST CORNER  
SECTION 29, T 3 N, R 1 W  
GRANT COUNTY, WISCONSIN

Grant County Coordinates:  
North \_\_\_\_\_  
East \_\_\_\_\_



History of original corner establishment and subsequent restorations and descriptions of any record. Monument, occupation, testimonial or other evidence considered.

Record of evidence is the original Government survey dated February 9, 1832 by Robert Clark. In May of 1999 Larry Austin found a rail road spike and replaced it with a 1" rebar and Grant County Aluminum Cap. The ties set by Larry Austin had been destroyed by the reconstruction of U.S.H. 151 in 2002.

I found the the 1" rebar set by Austin, but the head of the Aluminum cap had been sheared off leaving part of the aluminum stem in place on the 1" Rebar. I accepted the location of the 1" rebar after a traverse of the area verified its location.

### LEGEND

- = Found 1" rebar with the aluminum cap sheared off
- ▲ = Found 3/4" rod with Wis DOT R.O.W. Cap
- = Found 1" dia. Rebar



NOT TO SCALE



I, Joseph D. Niles, Wisconsin Professional Land Surveyor, S-2896, certify that the corner location shown on this record was determined by me or under my direction and control and that this U.S. Public Land Survey Monument record is correct and complete to the best of my knowledge and belief.

*Joseph D. Niles*  
Joseph D. Niles, S-2896  
Professional Land Surveyor

Date: 10-13-2017

31089

JUL 26 2017

# Grant County Certified U.S. Public Land Survey Monument Record

DATUM : NAD83 (2011) WISCONSIN

GRANT COUNTY COORDINATES

CONTROL IS A COMBINATION OF GPS AND CONVENTIONAL FIELD CONTROL.

NORTH 473925.24

EAST 874295.64

The Northwest corner of Section 28, Town 3 North, Range 1 West,  
Town of Platteville, Grant County, Wisconsin.

(A) Identify the corner by reference to the U.S. public land survey system.

WITNESS TO CORNER LOCATION:  
Bruce D. Bowden



(E) The corner was restored through acceptance of  
(1) an obliterated evidence location  
(2) a found perpetuated location  
(3) lost corner proportionate methods

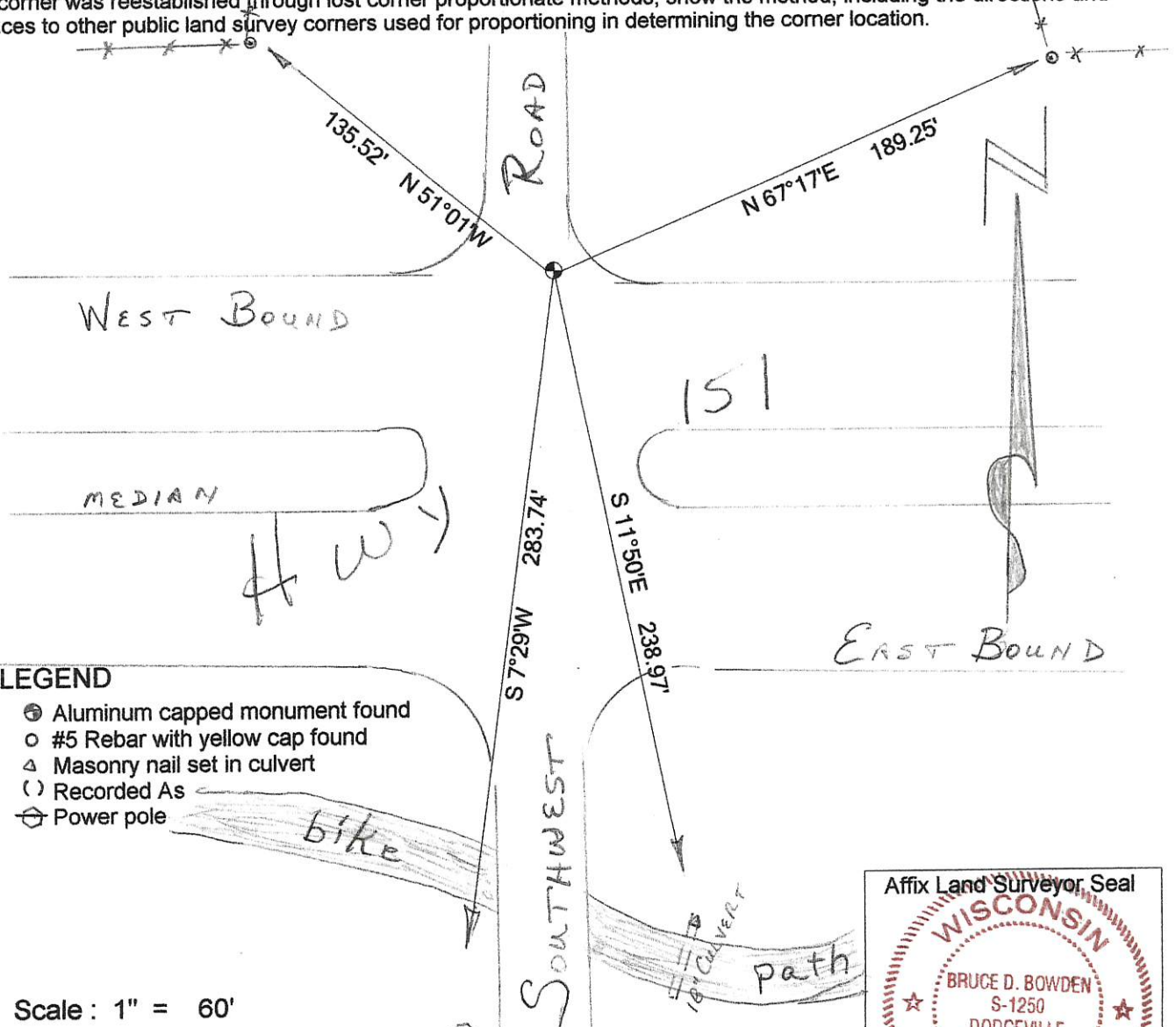
= Corner monument restored or maintained.

Sec. 28, T3N, R1W

(B) Describe any record evidence, monument evidence, occupational evidence, testimonial evidence or any other material evidence you considered, and whether the monument was placed or found.

Monument found and accepted as shown on Certified Land Corner by Larry Austin dated May 22, 1999 and on WI Dept of Transportation project number 1209-02-23, page 4.5.

(C, D, F, G) Plan view drawing below, provide reference ties to at least 4 witness monuments, or, if the location is within a municipality, to at least 2 witness monuments. Depict the relevant monuments and reference ties in sufficient detail to enable accurate relocation of the corner monument, if disturbed. Indicate North. Describe any material discrepancy between the location of the corner as restored or reestablished and the location of that corner as previously monumented by distance and direction. Show the discrepancy on the plan view and the distances between the corner as previously monumented. If the corner was reestablished through lost corner proportionate methods, show the method, including the directions and distances to other public land survey corners used for proportioning in determining the corner location.



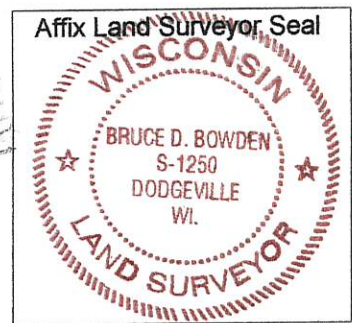
### LEGEND

- Aluminum capped monument found
- #5 Rebar with yellow cap found
- Masonry nail set in culvert
- Recorded As
- Power pole

Scale : 1" = 60'

(H) I, Bruce D. Bowden do certify that the corner location shown on this record was determined by me or under my direction and control and that this U.S. Public Land Survey Monument Record is correct and complete to the best of my knowledge and belief.

*Bruce D. Bowden*  
Signature Date 7/20/17



Romportl No. 20301200000  
Grant Co. Index No. 89

# GRANT COUNTY CERTIFIED LAND CORNER

CORNER NUMBER 89

**CERTIFICATE:**

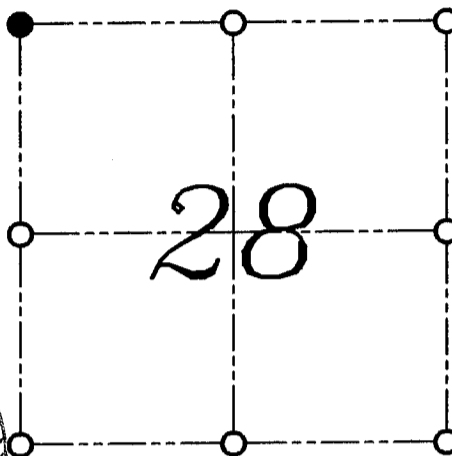
I, LARRY L. AUSTIN, DO HEREBY CERTIFY THAT ON TWELFTH DAY OF MAY, 1999, I FOUND EVIDENCE OF THE NORTHWEST CORNER OF SECTION 28, TOWN 3 NORTH, RANGE 1 WEST, OF THE FOURTH PRINCIPAL MERIDIAN, AND I RE-ESTABLISHED SAID CORNER ACCORDING TO THE WISCONSIN STATUTES AS SHOWN AND DESCRIBED HEREON.

DATED THIS TWENTY-SECOND DAY OF MAY, 1999

*Larry L. Austin*  
LARRY L. AUSTIN S-1903



SEAL



● = CORNER LOCATION

NORTHWEST CORNER OF  
SECTION 28, T 3 N R 1 W  
TOWN OF PLATTEVILLE

**HISTORY OF ORIGINAL CORNER ESTABLISHMENT:**

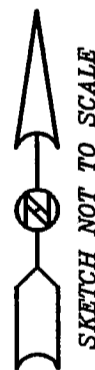
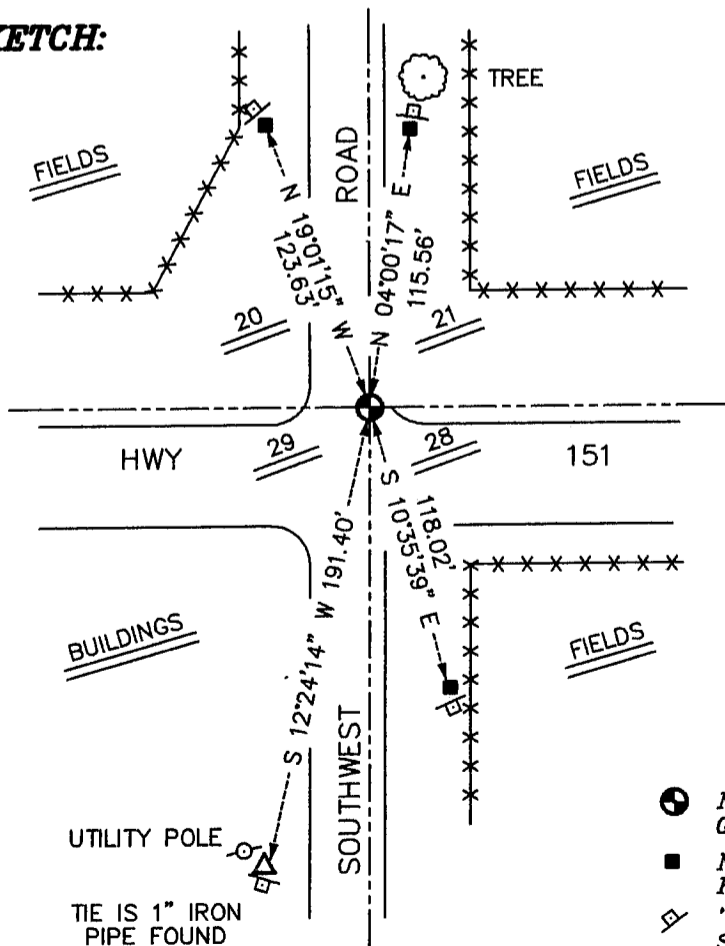
CORNER WAS SET IN 1832 BY ROBERT CLARK. GEO STUNTZ WAS AT THE CORNER IN 1847. BRUCE BOWDEN FOUND A RAILROAD SPIKE AT THIS LOCATION IN 1985.

**DESCRIPTION OF CORNER EVIDENCE FOUND:**

I ACCEPTED THE RAILROAD SPIKE LOCATION AFTER AN E.D.M. AND G.P.S. TRAVERSE OF THE AREA. I REPLACED THE RAILROAD SPIKE WITH A NUMBER 8 BAR WITH ALUMINUM CAP. VERIFIED THIS LOCATION USING E.D.M. AND G.P.S. METHODS.

**DESCRIPTION OF CORNER AND WITNESS MONUMENTS, REFERENCES AND ACCESSORIES USED TO PERPETUATE THE ORIGINAL OR RE-ESTABLISHED LOCATION OF THIS CORNER:**  
WITNESS TO THE CORNER LOCATION: BOBBY SEDGWICK ; SHELBY BLINDERT

**SKETCH:**



**LEGEND**

- NUMBER 8 X 30" REBAR SET WITH GRANT COUNTY ALUMINUM CAP
- NUMBER 4 X 24" REBAR SET WITH RED PLASTIC CAP AND SIGN
- "D.O.T. SURVEY MARKER NEARBY" SIGN SET
- \*\*-\*\* EXISTING FENCE LOCATION