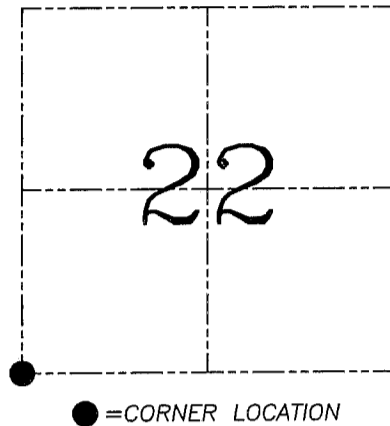
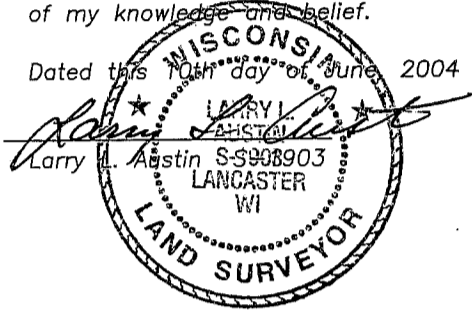


**U.S. PUBLIC LAND SURVEY MONUMENT RECORD – GRANT COUNTY, WI**  
**Section 22, Town 3 North Range 1 West, Town of Platteville**

CERTIFICATE

I, Larry L. Austin, do hereby certify that the corner location on this record was determined by me and/or under my direct supervision and that this U.S. public land survey monument record is correct and complete to the best of my knowledge and belief.

Dated this 10th day of June, 2004



HISTORY OF CORNER ESTABLISHMENT

Corner was previously set and tied by myself prior to highway construction.


DESCRIPTION OF CORNER EVIDENCE FOUND

Due to highway construction, the corner and ties were lost. I reset and retied the corner as shown below.

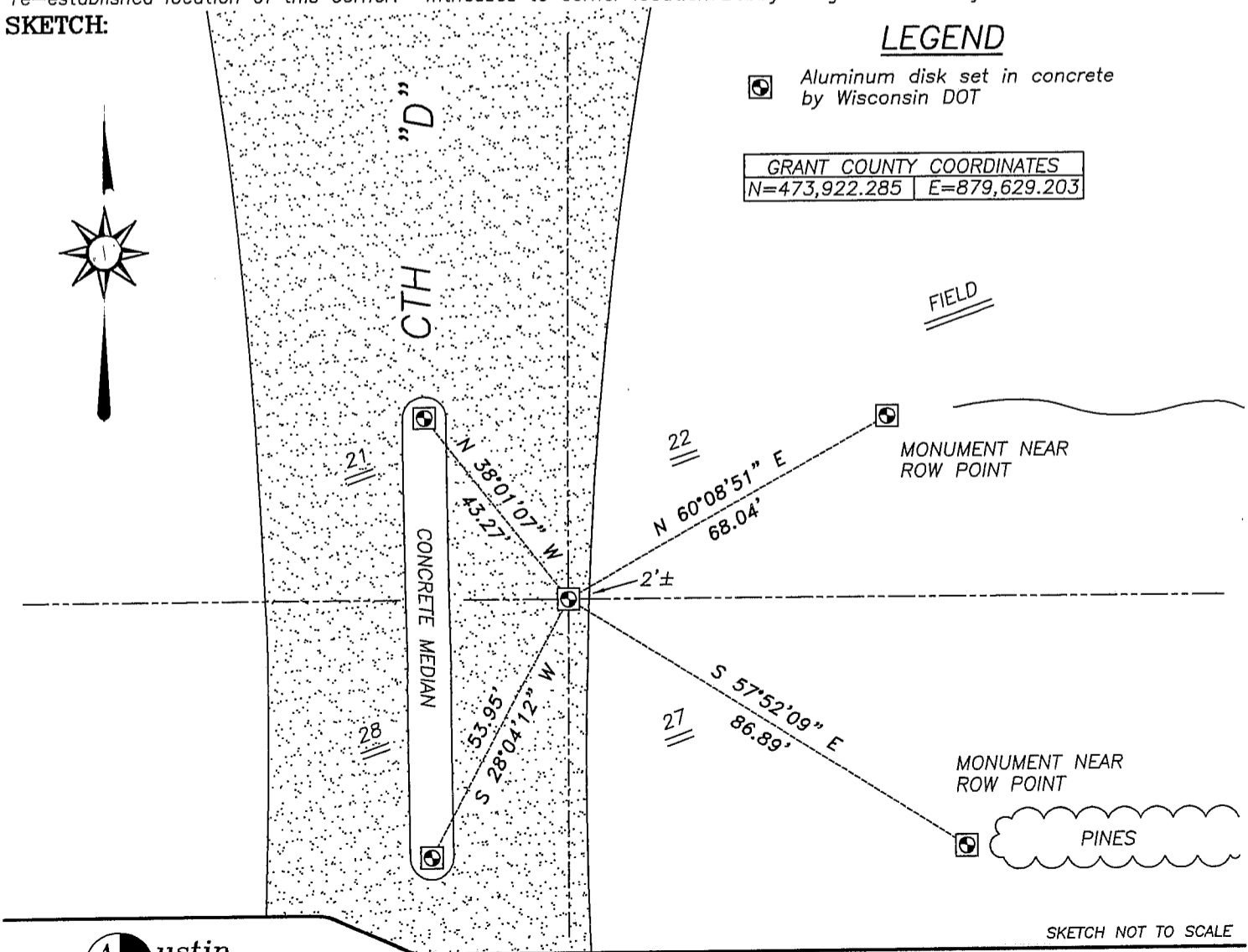
DESCRIPTION OF CORNER AND WITNESS MONUMENTS, references and accessories used to perpetuate the original or re-established location of this corner. Witnesses to corner location. Bobby Sedgwick & Shelby Blindert

**SKETCH:**

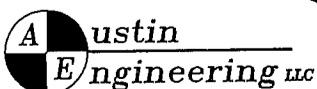
**LEGEND**

-  Aluminum disk set in concrete by Wisconsin DOT

GRANT COUNTY COORDINATES	
N=473,922.285	E=879,629.203



SKETCH NOT TO SCALE



4211 HWY 81 E, LANCASTER, WI 53813  
 PHONE 608-723-6363 FAX 608-723-6702

JOB NUMBER 04S163  
 FIELDBOOK: TSDR, 2412  
 G:\T3NR1W\29DOT  
 H:\TIE\T3NR1W\87

DRAWN BY: SW AUSTIN  
 APPROVED: LL AUSTIN

# GRANT COUNTY CERTIFIED LAND CORNER

CORNER NUMBER 87

**CERTIFICATE:**

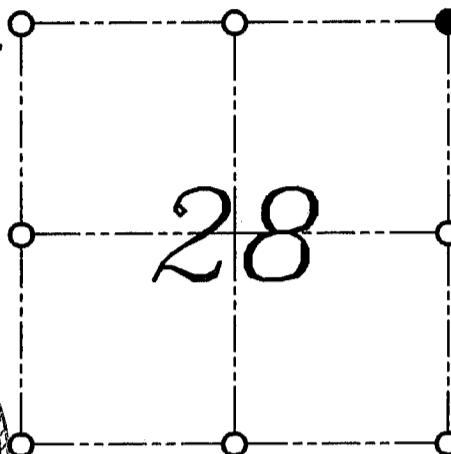
I, LARRY L. AUSTIN, DO HEREBY CERTIFY THAT ON TWELFTH DAY OF MAY, 1999, I FOUND MONUMENTED EVIDENCE OF THE NORTHEAST CORNER SECTION 28, TOWN 3 NORTH, RANGE 1 WEST, OF THE FOURTH PRINCIPAL MERIDIAN, AND I RE-ESTABLISHED SAID CORNER ACCORDING TO THE WISCONSIN STATUTES AS SHOWN AND DESCRIBED HEREON.

DATED THIS TWENTY-SECOND DAY OF MAY, 1999

*Larry L. Austin*  
LARRY L. AUSTIN S-1903



SEAL



● = CORNER LOCATION

NORTHEAST CORNER OF  
SECTION 28, T 3 N R 1 W  
TOWN OF PLATTEVILLE

**HISTORY OF ORIGINAL CORNER ESTABLISHMENT:**

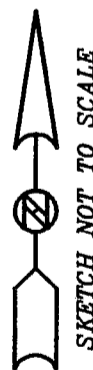
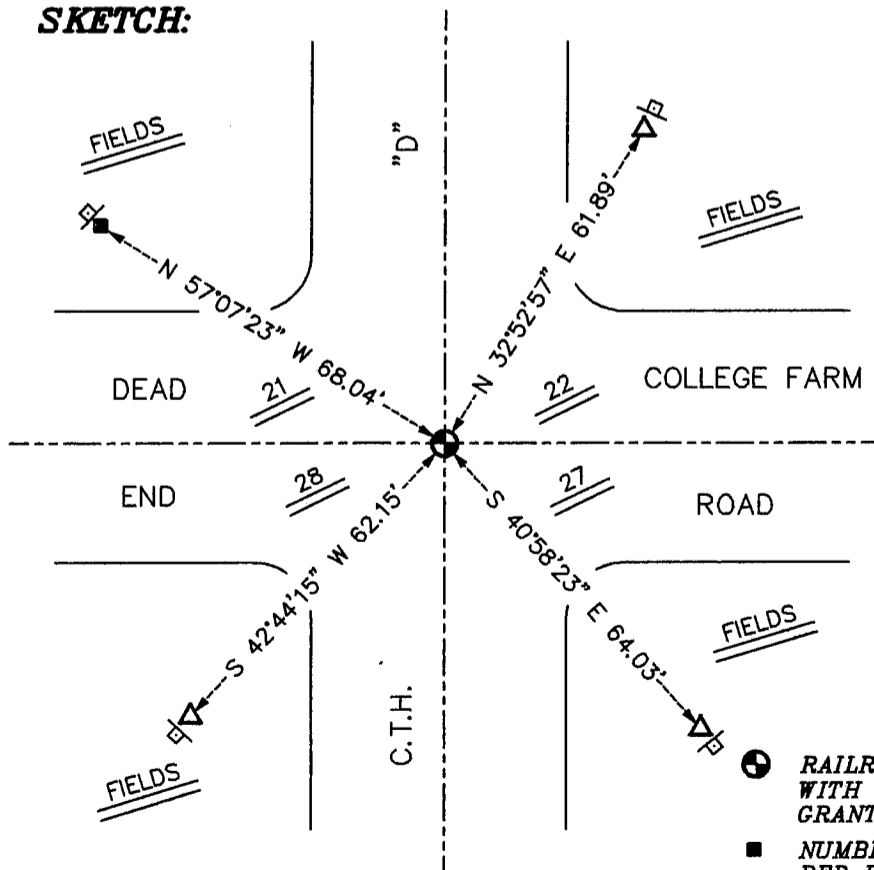
CORNER WAS SET IN 1833 BY ROBERT CLARK. I FOUND AND TIED AN EXISTING RAILROAD SPIKE IN 1995.

**DESCRIPTION OF CORNER EVIDENCE FOUND:**

I FOUND THE EXISTING RAILROAD SPIKE AND SET A 1" X 30" IRON BAR IN PLACE OF THE SPIKE. I ACCEPTED THIS LOCATION AFTER AN E.D.M. TRAVERSE OF THE AREA.

**DESCRIPTION OF CORNER AND WITNESS MONUMENTS, REFERENCES AND ACCESSORIES USED TO PERPETUATE THE ORIGINAL OR RE-ESTABLISHED LOCATION OF THIS CORNER:**  
WITNESS TO THE CORNER LOCATION: BOBBY SEDGWICK ; LARRY AUSTIN

**SKETCH:**



**LEGEND**

- RAILROAD SPIKE FOUND - REPLACED WITH NUMBER 8 X 30" REBAR WITH GRANT COUNTY ALUMINUM CAP
- NUMBER 4 X 24" REBAR SET WITH RED PLASTIC CAP AND SIGN
- ◇ "D.O.T. SURVEY MARKER NEARBY" SIGN SET
- △ 1" IRON PIPE FOUND

# GRANT COUNTY

## Survey Monument Record

TYPE OF MONUMENT RAILROAD SPIKE FOUND

STATE PLANE COORDINATES: N \_\_\_\_\_  
E \_\_\_\_\_

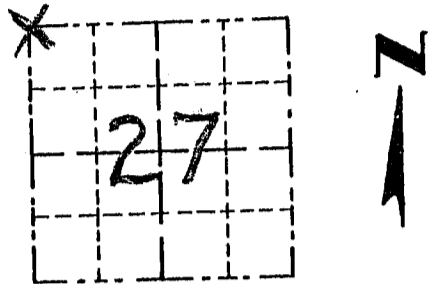
ELEVATION — M.S.L. DATUM: \_\_\_\_\_

THETA ANGLE: \_\_\_\_\_

FIELD BOOK: \_\_\_\_\_

PAGE \_\_\_\_\_

CORNER NO. 87  
SECTION 27  
TOWN 3N  
RANGE 1W  
NW COR.

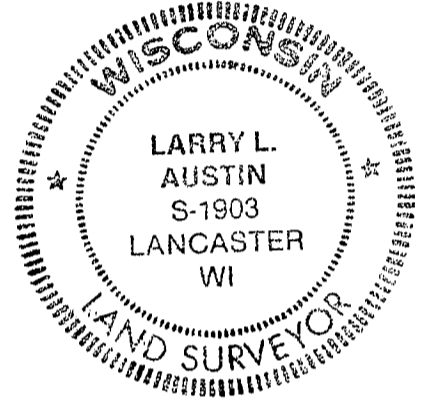


LOCATION  
(Indicated by "X")

### BASIS FOR MONUMENT LOCATION

(Use reverse side if necessary)  
Show info such as: History of corner, with reference to Vol. and pg., dates, surveyor; exact description of monument replaced; if location computed, by taped or EDM traverse; landowner, remarks, etc.

SEAL:



FOUND & ACCEPTED RAILROAD SPIKE AT OCCUPIED LOCATION & VERIFIED BY EDM TRAVERSE; CORNER WAS ALSO SHOWN ON A 1984 CESKA SURVEY.

CERTIFIED CORRECT  
*Larry L. Austin*  
Registered Land Surveyor  
DATE: 1-30-95

### TIE SKETCH

Show at least three (3) ties and monument

#### LEGEND

- ⊕ RAILROAD SPIKE FOUND
- 1" x 12" IRON PIPE SET = TIES

