

GRANT COUNTY CERTIFIED LAND CORNER

CORNER NO. 85

CERTIFICATE:

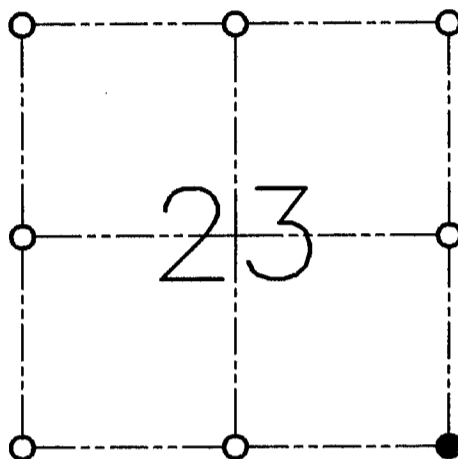
I, LARRY L. AUSTIN, DO HEREBY CERTIFY THAT ON FIRST DAY OF MAY, 1999, I FOUND MONUMENTED EVIDENCE OF THE SOUTHEAST OF SECTION 23, TOWN 3 NORTH, RANGE 1 WEST, OF THE FOURTH PRINCIPAL MERIDIAN, AND I RE-ESTABLISHED SAID CORNER ACCORDING TO THE WISCONSIN STATUTES AS SHOWN AND DESCRIBED HEREON.

DATED THIS TWENTY-SECOND DAY OF MAY, 1999

Larry L. Austin
LARRY L. AUSTIN S-1903



SEAL



● = CORNER LOCATION

**SOUTHEAST CORNER OF
SECTION 23, T 3 N R 1 W
TOWN OF PLATTEVILLE**

HISTORY OF ORIGINAL CORNER ESTABLISHMENT:

CORNER WAS SET IN 1833 BY ROBERT CLARK. IN 1987
BRUCE BOWDEN SET A RAILROAD SPIKE AT THIS LOCATION.

DESCRIPTION OF CORNER EVIDENCE FOUND:

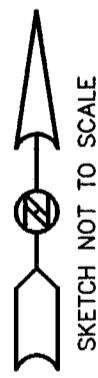
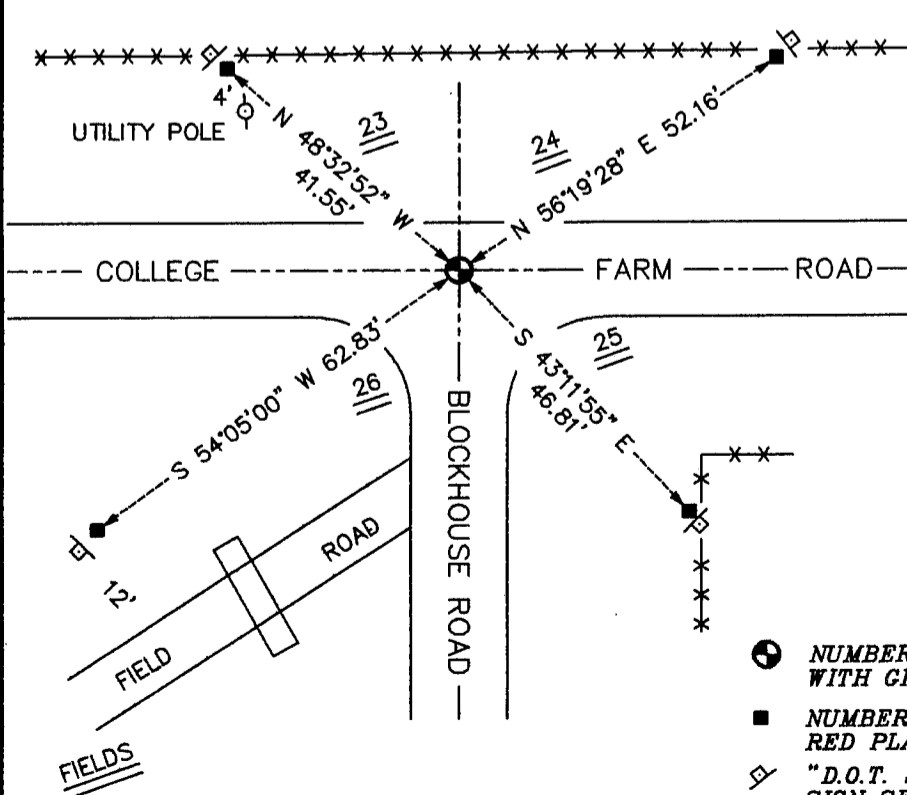
I FOUND THE RAILROAD SPIKE AND ACCEPTED THIS LOCATION AFTER
AN E.D.M. AND G.P.S. TRAVERSE OF THE AREA.

DESCRIPTION OF CORNER AND WITNESS MONUMENTS, REFERENCES AND ACCESSORIES USED TO PERPETUATE THE ORIGINAL OR RE-ESTABLISHED LOCATION OF THIS CORNER:

WITNESS TO THE CORNER LOCATION:

BOBBY SEDGWICK
SHELBY BLINDERT

SKETCH:



LEGEND

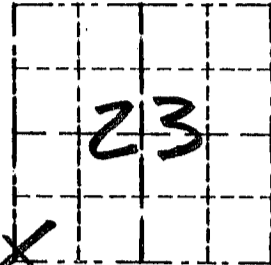
- NUMBER 8 X 30" REBAR SET WITH GRANT COUNTY ALUMINUM CAP
- NUMBER 4 X 24" REBAR SET WITH RED PLASTIC CAP AND SIGN
- ◇ "D.O.T. SURVEY MARKER NEARBY" SIGN SET
- **-** EXISTING FENCE LOCATION

Survey Monument Record

TYPE OF MONUMENT 3/4" X 24" IRON
BAR WITH CAP

CORNER NO. 85
SECTION 23
TOWN 3N
RANGE 1W

FIELD BOOK: 94-17
PAGE (17)



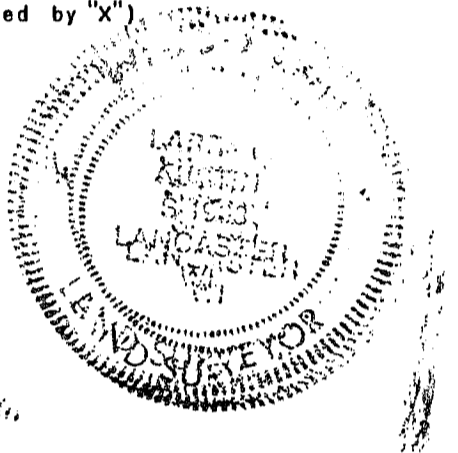
BASIS FOR MONUMENT LOCATION

(Use reverse side if necessary)

Show info such as: History of corner, with reference to Vol. and pg., dates, surveyor; exact description of monument replaced; if location computed, by taped or EDM traverse; landowner, remarks, etc.

LOCATION
(Indicated by "X")

SEAL:



NO RECORD FOUND SINCE ORIGINAL SURVEY IN 1833 BY CLARK. I SET THE CORNER BY PROPORTIONING ITS E-W LOCATION & ACCEPTING THE E-W & FOR THE NORTH / SOUTH LOCATION; VERIFIED BY EDM TRAVERSE OF THE AREA.

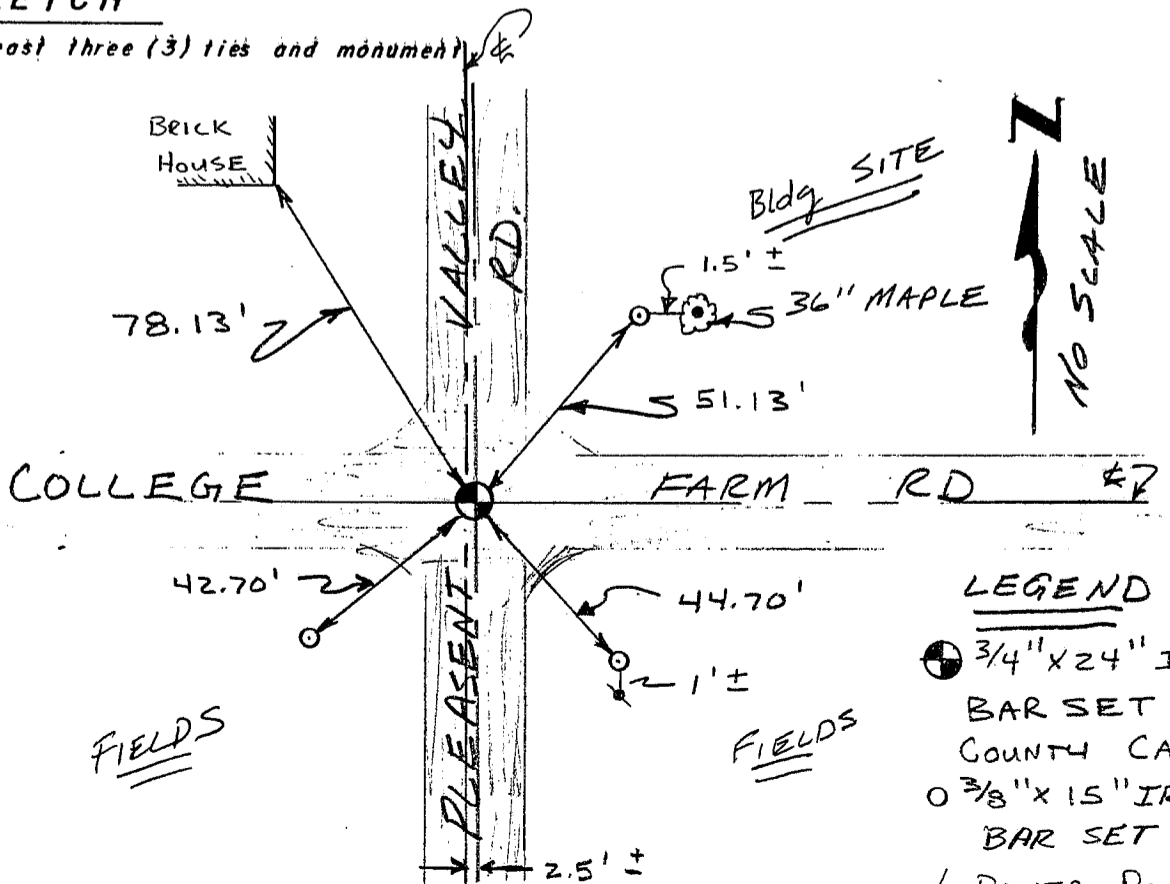
CERTIFIED CORRECT

James F. Christ
Registered Land Surveyor

DATE: 7/17/96

TIE SKETCH

Show at least three (3) ties and monument



LEGEND

- ⊕ 3/4" X 24" IRON BAR SET W/ COUNTY CAP
- 3/8" X 15" IRON BAR SET
- ⚡ POWER POLE