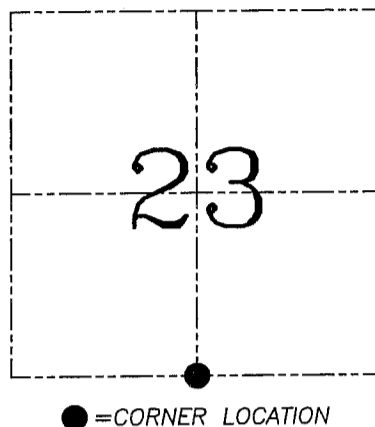
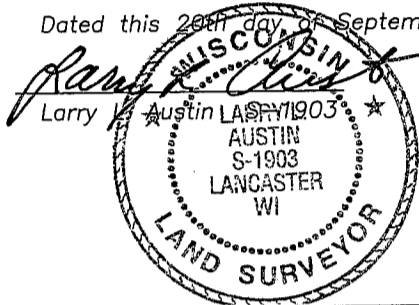


U.S. PUBLIC LAND SURVEY MONUMENT RECORD – GRANT COUNTY, WI
Section 23, Town 3 North Range 1 West, Town of Platteville

CERTIFICATE

I, Larry L. Austin, do hereby certify that the corner location on this record was determined by me and/or under my direct supervision and that this U.S. public land survey monument record is correct and complete to the best of my knowledge and belief.

Dated this 20th day of September, 2004



HISTORY OF CORNER ESTABLISHMENT

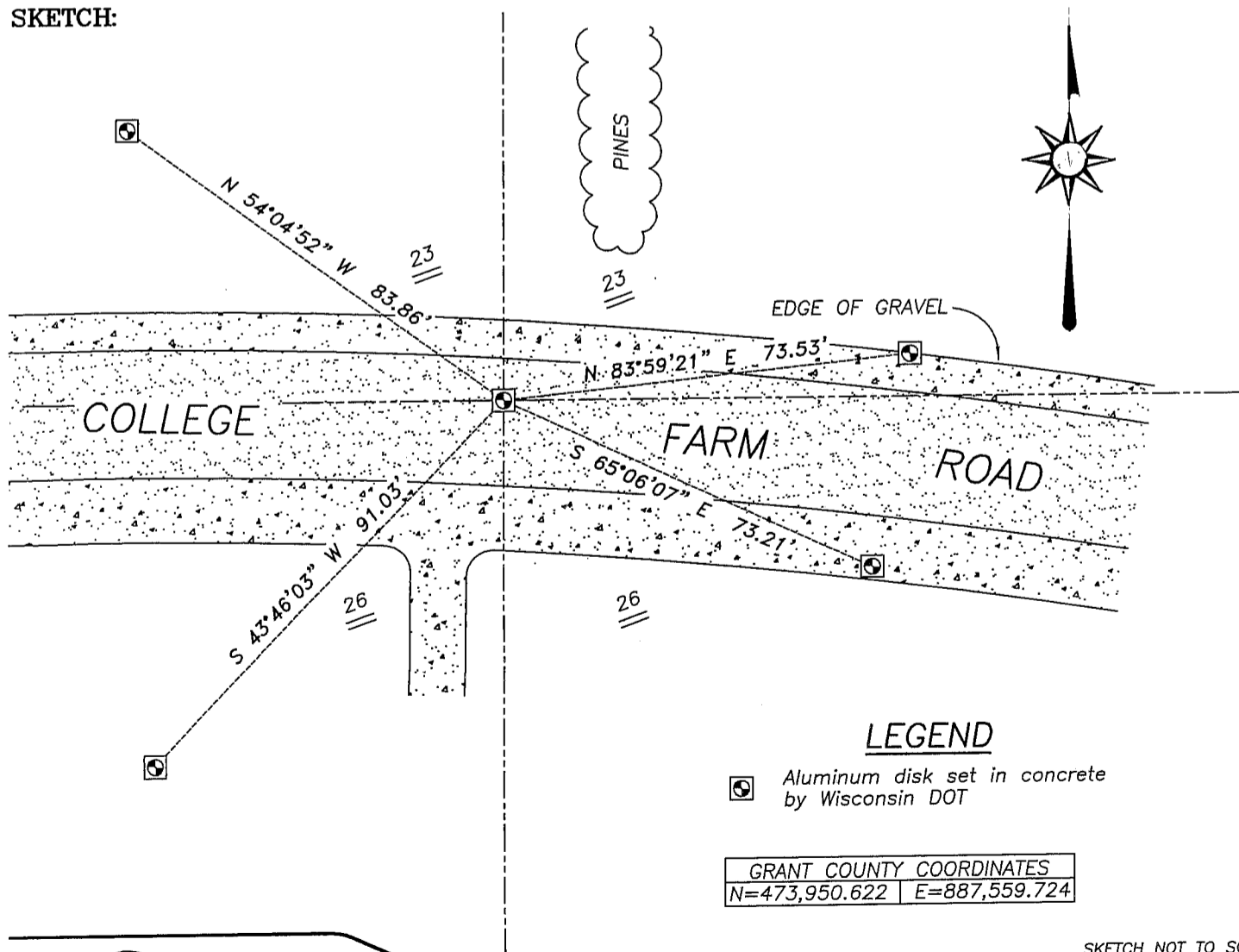
Corner was previously set and tied by myself prior to highway construction.

DESCRIPTION OF CORNER EVIDENCE FOUND

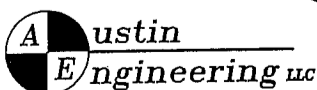
Due to highway construction, the corner and ties were lost. I reset and retied the corner as shown below.

DESCRIPTION OF CORNER AND WITNESS MONUMENTS, references and accessories used to perpetuate the original or re-established location of this corner. Witnesses to corner location Bobby Sedgwick & Shelby Blindert

SKETCH:



SKETCH NOT TO SCALE



4211 HWY 81 E, LANCASTER, WI 53813
 PHONE 608-723-6363 FAX 608-723-6702

JOB NUMBER 04S163
 FIELDBOOK: TSDR, 2412
 G:\T3NR1W\29DOT
 H:\TIE\T3NR1W\84

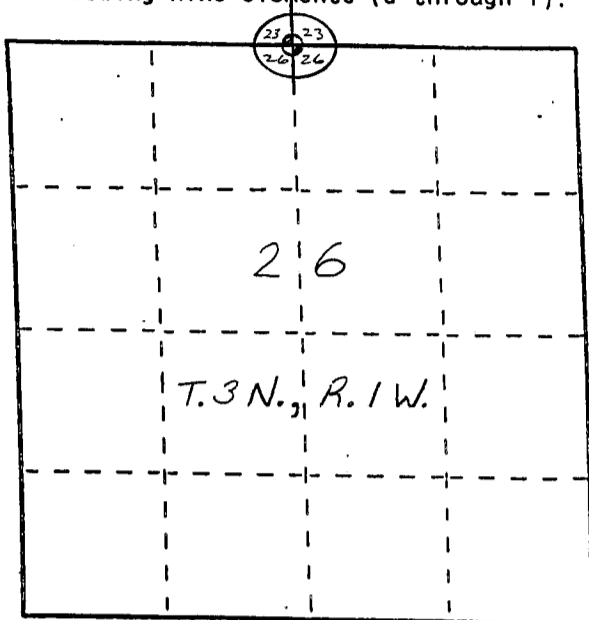
DRAWN BY: SW AUSTIN
 APPROVED: LL AUSTIN

U. S. PUBLIC LAND SURVEY MONUMENT RECORD

INSTRUCTIONS: This record shall show the location of the corner and shall include all of the following nine elements (a through i).

- (a) Identify the corner by reference to the U.S. public land survey system.
- = Corner monument restored.

The North Quarter Corner
 of Section 26, Town 3 North,
 Range 1 West, Platteville
 Township, Grant County,
 Wisconsin.

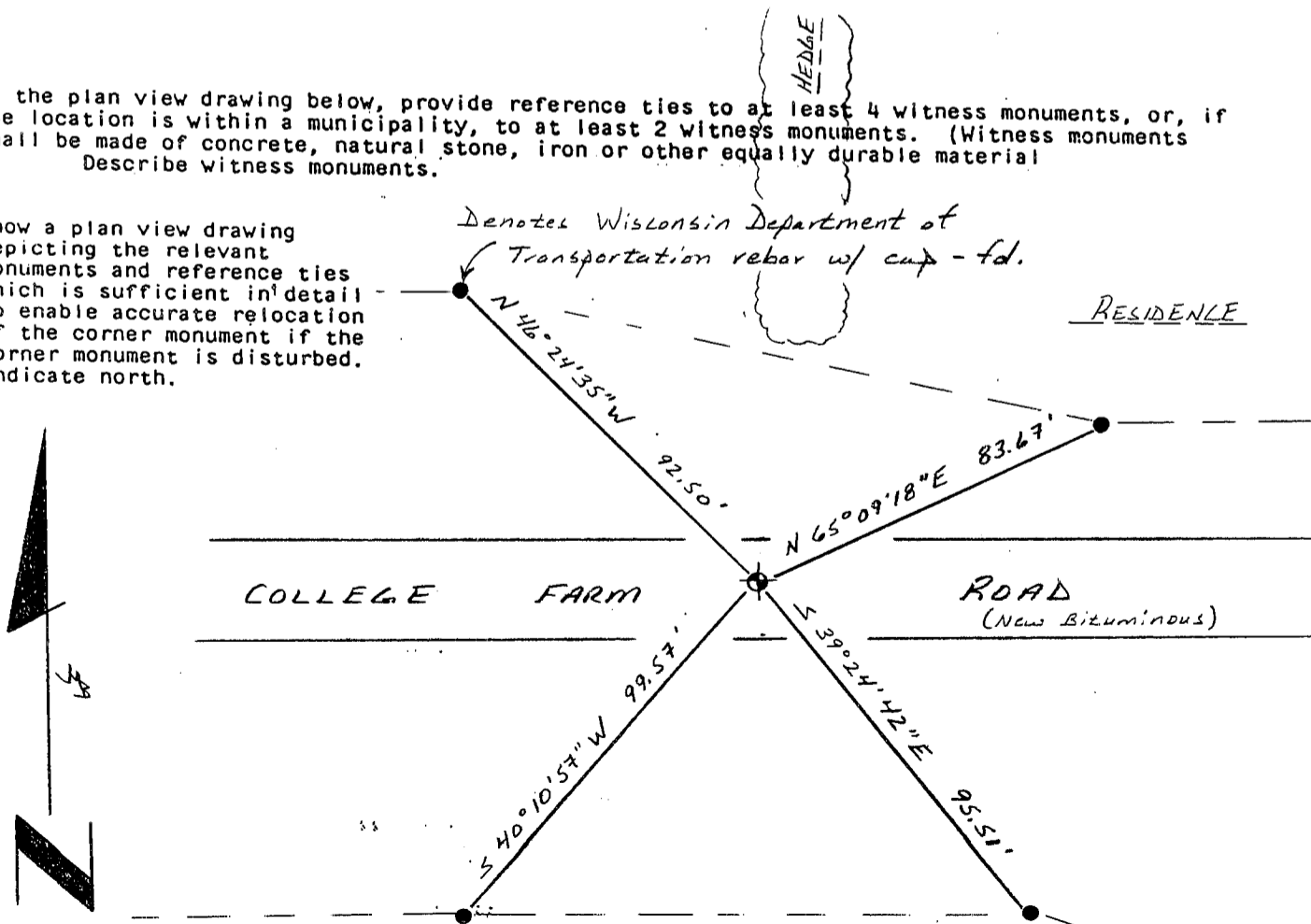


- (b) Describe any record evidence, monument evidence, occupational evidence, testimonial evidence or any other material evidence you considered, and whether the monument was found or placed.

I set a masonry nail in new bituminous (frozen) using monumentation noted on sheet 4.13 of RLW Project Number 1209-12-23.
 The 3/4" dia iron bar noted in those plans was removed during construction to realign College Farm Road.

- (c) In the plan view drawing below, provide reference ties to at least 4 witness monuments, or, if the location is within a municipality, to at least 2 witness monuments. (Witness monuments shall be made of concrete, natural stone, iron or other equally durable material) Describe witness monuments.

- (d) Show a plan view drawing depicting the relevant monuments and reference ties which is sufficient in detail to enable accurate relocation of the corner monument if the corner monument is disturbed. Indicate north.



SCALE: 1" = 40'

FIELD

(e) Describe any material discrepancy between the location of the corner as restored or reestablished and the location of that corner as previously restored or reestablished by distance and direction. Show the discrepancy on the plan view drawing under (d), above. Show the distances between the corner as previously restored or reestablished and (1) the corner as restored or reestablished, and (2) to at least 2 of the witness monuments shown on the drawing in (d), above.

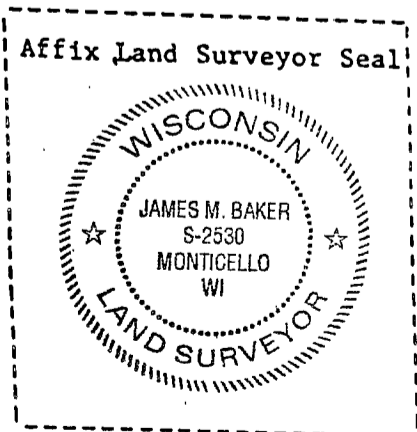
None.

(f) Was the corner restored through acceptance of (1) an obliterated evidence location, or, (2) a found perpetuated location?

A found perpetuated location.

(g&h) Was the corner reestablished through lost corner proportionate methods? If so, show the method, including the directions and distances to other public land survey corners used as evidence or used for proportioning in determining the corner location?

No.



(1) I, James M. Baker
(type or print name) certify that the corner location shown on this record was determined by me or under my direction and control and that this U.S. Public Land Survey Monument Record is correct and complete to the best of my knowledge and belief.

James M. Baker
Signature

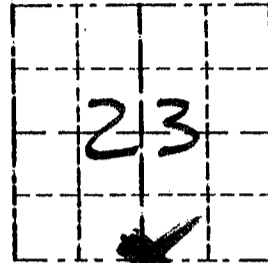
12/19/2003
Date

Survey Monument Record

TYPE OF MONUMENT 3/4" x 24" IRON BAR
SET WITH CAP

CORNER NO. 84
 SECTION 23
 TOWN 3N
 RANGE 1W

FIELD BOOK: 94-17
 PAGE (17)



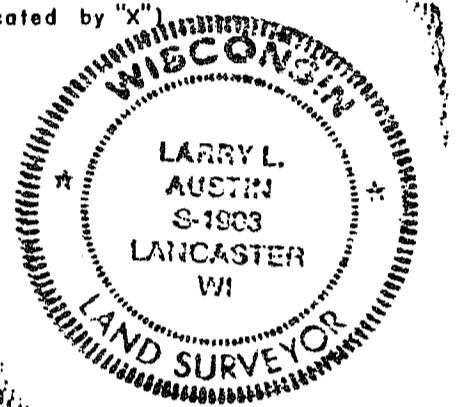
BASIS FOR MONUMENT LOCATION

(Use reverse side if necessary)

Show info such as: History of corner, with reference to Vol. and pg., dates, surveyor; exact description of monument replaced; if location computed, by taped or EDM traverse; landowner, remarks, etc.

LOCATION
 (Indicated by "X")

SEAL:



NO RECORD FOUND SINCE
ORIGINAL SURVEY IN 1833
BY CLARK, I SET THE CORNER
BY PROPORTIONING ITS E-W
LOCATION; & ACCEPTING THE E/W
FOR N/S LOCATION; VERIFIED BY
EDM TRAVERSE OF THE AREA.

CERTIFIED CORRECT

Larry L. Austin
 Registered Land Surveyor

DATE: 7/17/96

TIE SKETCH

Show at least three (3) ties and monument

LEGEND

- ⊕ 3/4" x 24" IRON BAR SET WITH COUNTY CAP.
- 3/8" x 15" IRON BAR SET

