

U.S. PUBLIC LAND SURVEY MONUMENT RECORD - GRANT COUNTY, WI

Section 25, Town 3 North Range 1 West, Town of Platteville (a)

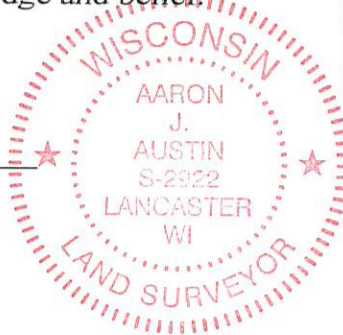
NOTE: This form is intended and designed to fulfill all requirements of the Wisconsin Administrative Code Chapter A-E 7.08, U.S. Public Land Survey Monument Record (3) (a) (b) (c) (d) (e) (f) (g) (h) (i).

CERTIFICATE: (i)

I, Aaron J. Austin, Wisconsin Professional Land Surveyor, do hereby certify that the corner location on this record was determined by me and/or under my direct supervision and that this U.S. Public Land Survey Monument Record is correct and complete to the best of my knowledge and belief.

Dated this 26th day of June, 2019.

Aaron J. Austin, S-2922



⊕ = CORNER LOCATION

Grant County Coordinates: NAD 83 (2011) Northing: 473,958.12 Easting: 892,840.80

HISTORY OF CORNER ESTABLISHMENT:

Original corner was set in 1833 by Robert Clark. Bruce Bowden set a 7/8" rebar and prepared a Survey Monument Record dated 9/7/1987.

DESCRIPTION OF CORNER EVIDENCE FOUND: (b) (f) (g) (h)

I found the 7/8" rebar Bowden set. I set four new witness corners after I verified the 7/8" rebars location with G.P.S. and E.D.M. methods.

DESCRIPTION OF CORNER AND WITNESS MONUMENTS, references and accessories used to perpetuate the original or re-established location of this corner. (c) (d) (e)

Witnesses to corner location Shane Austin, Owen Austin. Drawn by: Owen Austin

SKETCH:

LEGEND

- ⊕ Section Corner—as designated
● 3/4" x 18" rebar set
-x-x-x Existing fence

FIELD



Edge of blacktop

COLLEGE FARM

FARM

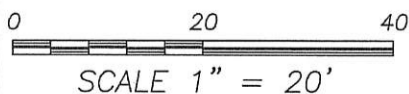
NORTH 1/4 CORNER SECTION 25, T3N R1W 7/8" Rebar found

ROAD

Edge of blacktop

PLANTED TREES

FIELD

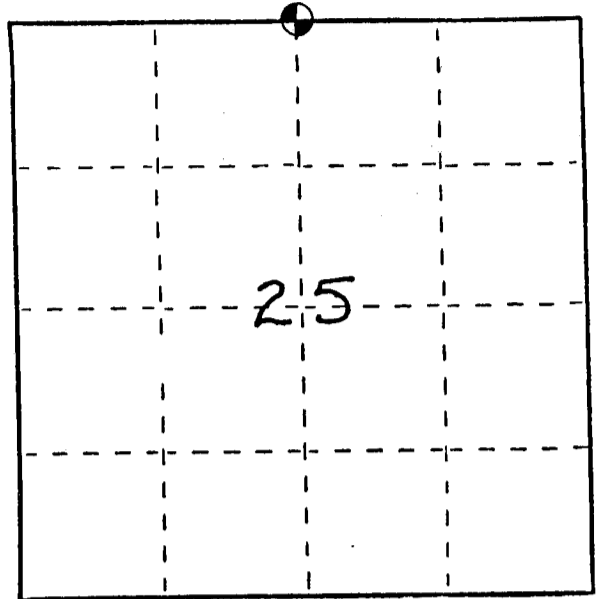


U. S. PUBLIC LAND SURVEY MONUMENT RECORD

INSTRUCTIONS: This record shall show the location of the corner and shall include all of the following nine elements (a through i).

- (a) Identify the corner by reference to the U.S. public land survey system.
- = Corner monument restored.

North $\frac{1}{4}$ corner of Section 25,
Town 3 North, Range 1 West,
Platteville Township, Grant
County, Wisconsin.



- (b) Describe any record evidence, monument evidence, occupational evidence, testimonial evidence or any other material evidence you considered, and whether the monument was found or placed.

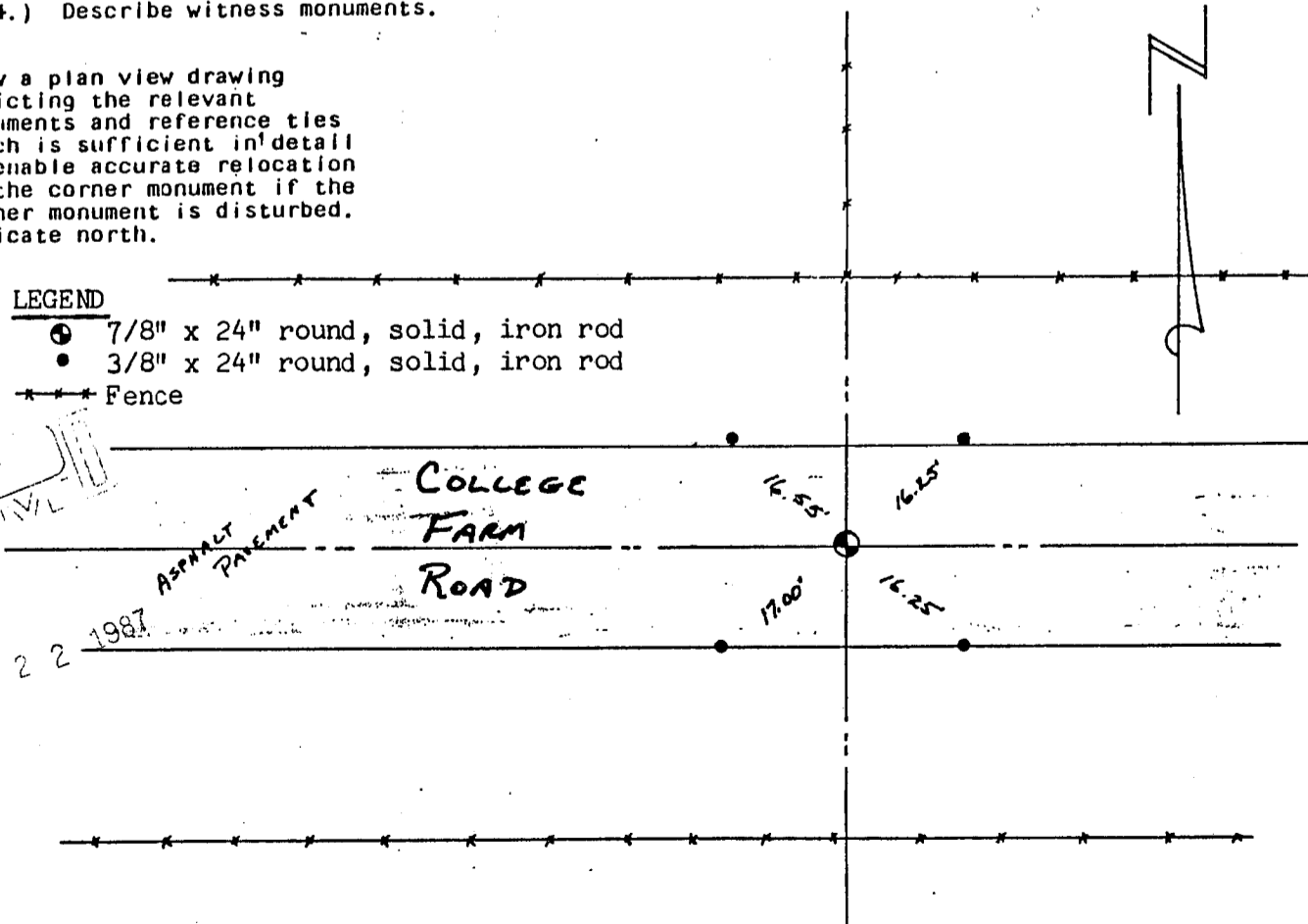
Monument set from existing physical evidence of fences and road after verification from proportionate measurements of an EDM traverse of the area. Found no other record of this corner since the original government survey.

- (c) In the plan view drawing below, provide reference ties to at least 4 witness monuments, or, if the location is within a municipality, to at least 2 witness monuments. (Witness monuments shall be made of concrete, natural stone, iron or other equally durable material, ~~except~~ ~~wood~~.) Describe witness monuments.

- (d) Show a plan view drawing depicting the relevant monuments and reference ties which is sufficient in detail to enable accurate relocation of the corner monument if the corner monument is disturbed. Indicate north.

LEGEND

- ⊙ 7/8" x 24" round, solid, iron rod
- 3/8" x 24" round, solid, iron rod
- Fence



BR
 SEP 22 1987

12-82

(c) Describe any material discrepancy between reestablished and the location of that corner by distance and direction. Show the discrepancy above. Show the distances between the corner and (1) the corner as restored or reestablished monuments shown on the drawing in (d), at

location of the corner as restored or previously restored or reestablished on the plan view drawing under (d), previously restored or reestablished, and (2) to at least 2 of the witness

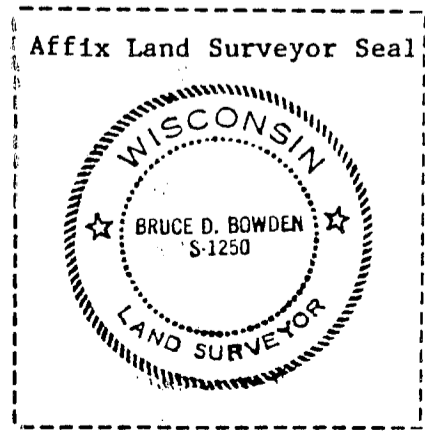
None

(f) Was the corner restored through acceptance of (1) an obliterated evidence location, or, (2) a found perpetuated location?

(1) an obliterated evidence location

(g&h) Was the corner reestablished through lost corner proportionate methods? If so, show the method, including the directions and distances to other public land survey corners used as evidence or used for proportioning in determining the corner location?

No



(i) I, Bruce D. Bowden, R.L.S. - 1250
(type or print name) certify that the corner location shown on this record was determined by me or under my direction and control and that this U.S. Public Land Survey Monument Record is correct and complete to the best of my knowledge and belief.

Bruce D Bowden
Signature

Sept 7, 1987
Date