

U. S. PUBLIC LAND SURVEY MONUMENT RECORD

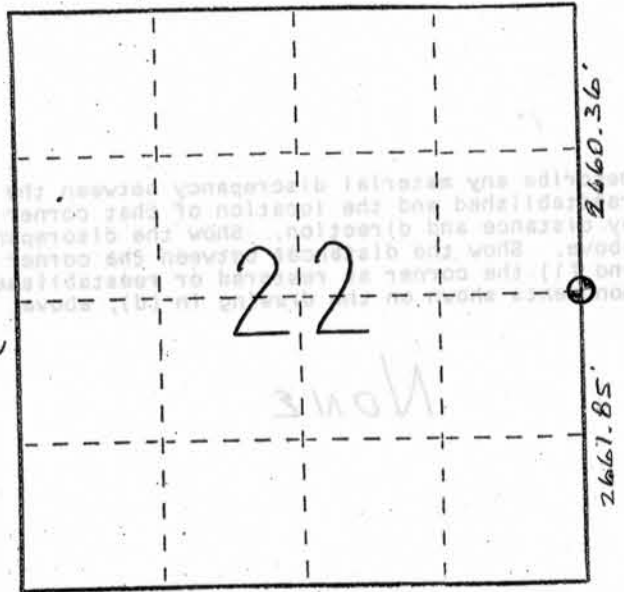
INSTRUCTIONS :

This record shall show the location of the corner and shall include all of the following nine elements (a through i).

(a) Identify the corner by reference to the U.S. public land survey system.

○ = Corner monument restored.

EAST 1/4 CORNER OF SECTION 22, TOWN 3 NORTH, RANGE 1 WEST, PLATTEVILLE TOWNSHIP, GRANT COUNTY, WISCONSIN



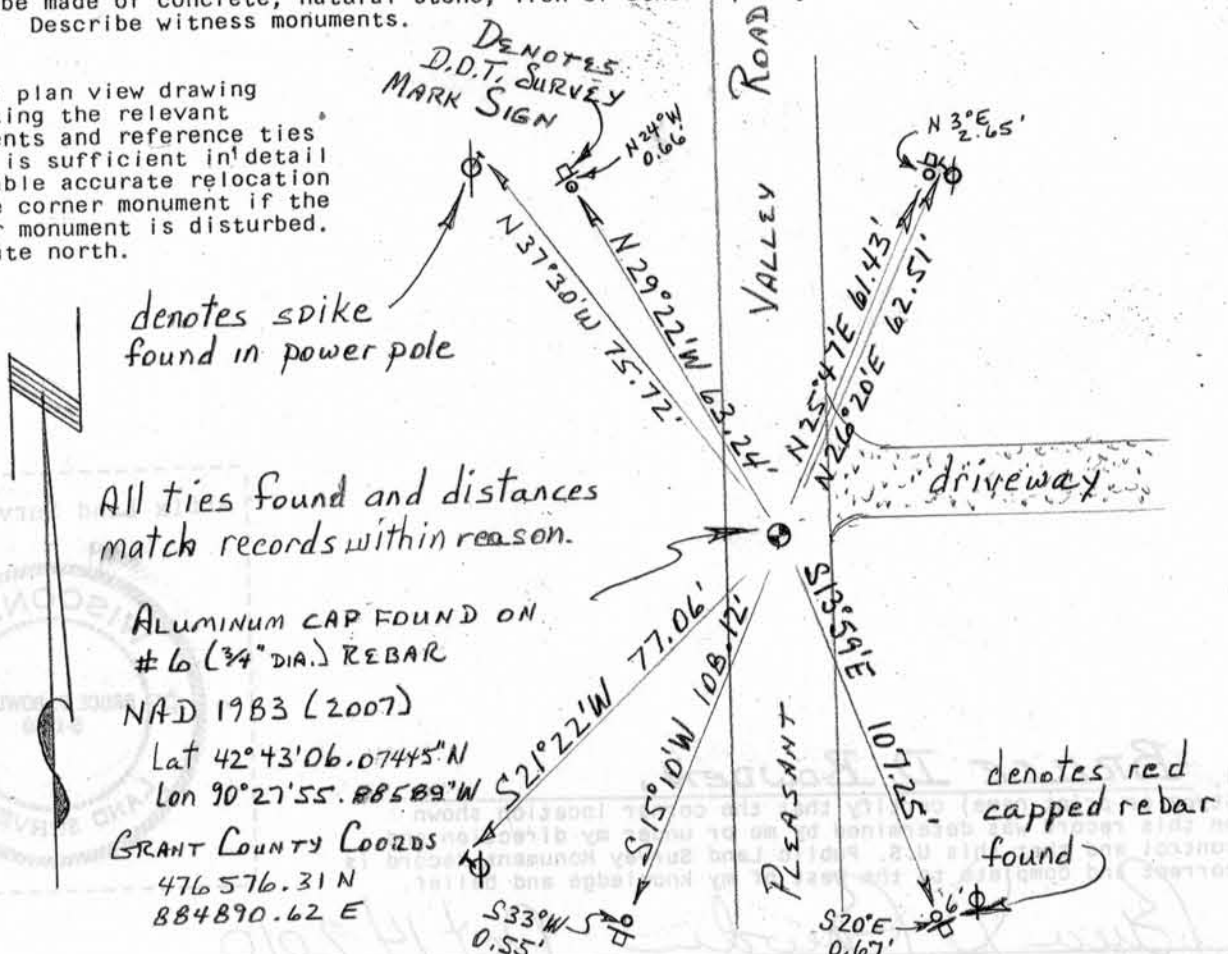
(b) Describe any record evidence, monument evidence, occupational evidence, testimonial evidence or any other material evidence you considered, and whether the monument was found or placed.

MONUMENT FOUND IN PLACE AS DESCRIBED BY L.E. SCHMIT IN 1977, D.J. MALLIET IN 1983 AND L.L. AUSTIN IN 1999.

ACCEPTED LOCATION AS IT ALSO FITS THE EXISTING EVIDENCE OF ROADS, FENCES AND PROPORTIONATE MEASUREMENTS IN THE AREA.

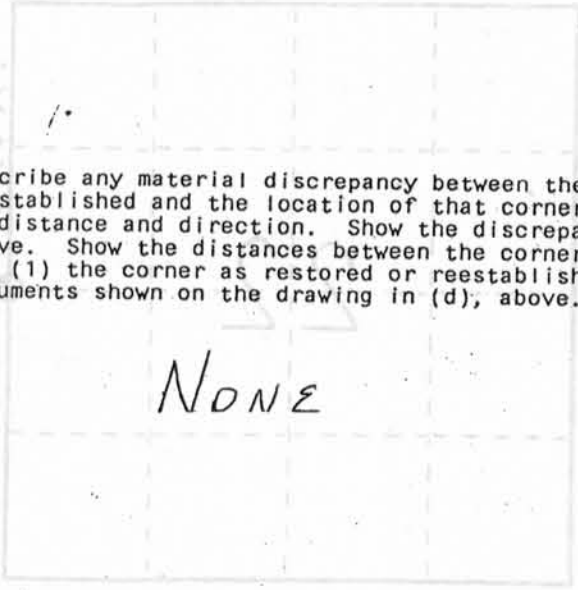
(c) In the plan view drawing below, provide reference ties to at least 4 witness monuments, or, if the location is within a municipality, to at least 2 witness monuments. (Witness monuments shall be made of concrete, natural stone, iron or other equally durable material, ~~except wood.~~) Describe witness monuments.

(d) Show a plan view drawing depicting the relevant monuments and reference ties which is sufficient in detail to enable accurate relocation of the corner monument if the corner monument is disturbed. Indicate north.



U. S. PUBLIC LAND SURVEY MONUMENT RECORD

This record shall show the location of the corner and shall include all of the following nine elements (a through i).



(e) Describe any material discrepancy between the location of the corner as restored or reestablished and the location of that corner as previously restored or reestablished by distance and direction. Show the discrepancy on the plan view drawing under (d), above. Show the distances between the corner as previously restored or reestablished and (1) the corner as restored or reestablished, and (2) to at least 2 of the witness monuments shown on the drawing in (d), above.

NONE

(f) Was the corner restored through acceptance of (1) an obliterated evidence location, or, (2) a found perpetuated location?

(2) A FOUND PERPETUATED LOCATION

(g&h) Was the corner reestablished through lost corner proportionate methods? If so, show the method, including the directions and distances to other public land survey corners used as evidence or used for proportioning in determining the corner location?

No



Affix Land Surveyor Seal



(i) I, BRUCE D. BOWDEN,

(type or print name) certify that the corner location shown on this record was determined by me or under my direction and control and that this U.S. Public Land Survey Monument Record is correct and complete to the best of my knowledge and belief.

Bruce D. Bowden Oct 14, 2010
Signature Date

GRANT COUNTY CERTIFIED LAND CORNER

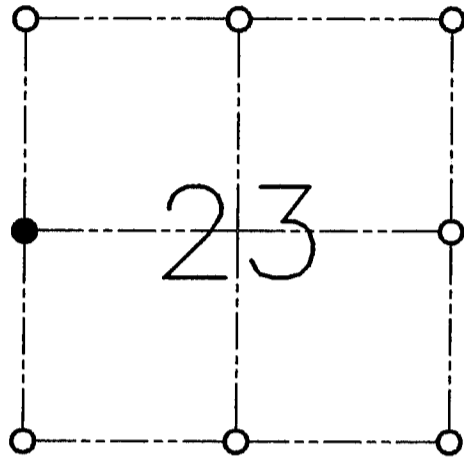
CORNER NO. 78

CERTIFICATE:

I, LARRY L. AUSTIN, DO HEREBY CERTIFY THAT ON FIRST DAY OF MAY, 1999, I FOUND MONUMENTED EVIDENCE OF THE WEST 1/4 CORNER SECTION 23, TOWN 3 NORTH, RANGE 1 WEST, OF THE FOURTH PRINCIPAL MERIDIAN, AND I RE-ESTABLISHED SAID CORNER ACCORDING TO THE WISCONSIN STATUTES AS SHOWN AND DESCRIBED HEREON.

DATED THIS TWENTY-SECOND DAY OF MAY, 1999

Larry L. Austin
LARRY L. AUSTIN S-1903



● = CORNER LOCATION

**WEST 1/4 CORNER OF
SECTION 23, T 3 N R 1 W
TOWN OF PLATTEVILLE**

HISTORY OF ORIGINAL CORNER ESTABLISHMENT:

CORNER WAS SET IN 1833 BY ROBERT CLARK.
IN 1983 DOUGLAS MALLIET SET A 3/4" IRON BAR.

DESCRIPTION OF CORNER EVIDENCE FOUND:

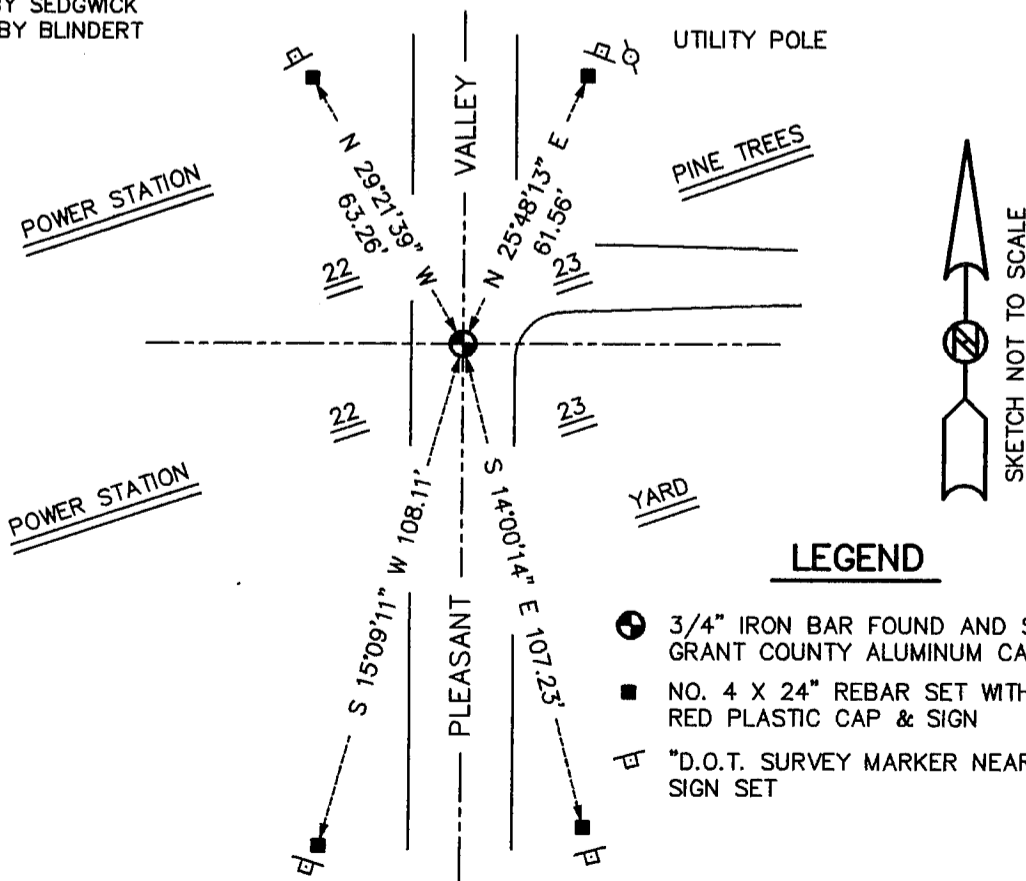
I FOUND THE 3/4" IRON BAR ACCEPTED ITS LOCATION AFTER AN
E.D.M. TRAVERSE OF THE AREA.

DESCRIPTION OF CORNER AND WITNESS MONUMENTS, REFERENCES AND ACCESSORIES USED TO PERPETUATE THE ORIGINAL OR RE-ESTABLISHED LOCATION OF THIS CORNER:

WITNESS TO THE CORNER LOCATION:

BOBBY SEDGWICK
SHELBY BLINDERT

SKETCH:



LEGEND

- 3/4" IRON BAR FOUND AND SET A GRANT COUNTY ALUMINUM CAP ON IT
- NO. 4 X 24" REBAR SET WITH RED PLASTIC CAP & SIGN
- H "D.O.T. SURVEY MARKER NEARBY" SIGN SET

US. PUBLIC LAND SURVEY MONUMENT RECORD

CORNER DESCRIPTION: E 1/4 CORNER, SECTION 22, T 3 N, R 1 W

STATE PLANE COORDINATES: N _____, E _____

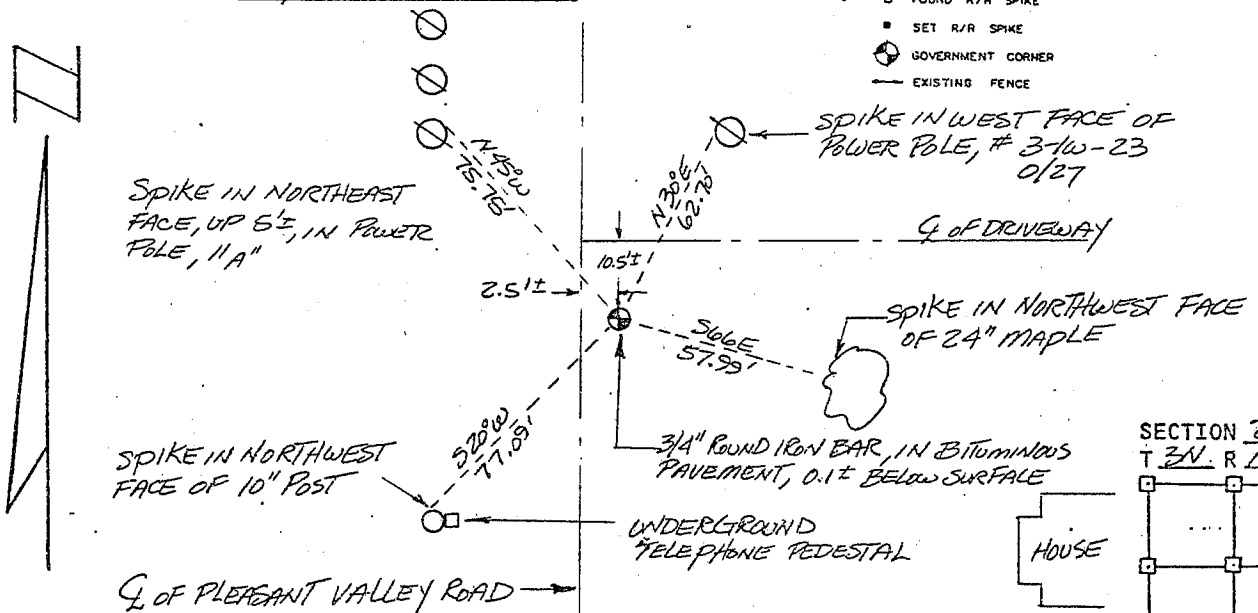
THETA ANGLE: _____

HORIZONTAL DATUM: WISCONSIN STATE PLANE COORDINATE SYSTEM, SOUTH ZONE

EVIDENCE: EXISTING 3/4" ROUND IRON BAR USED BY L.E. SCHMIDT IN SURVEY FOR W.O. WILLIAMS OF 9-13-77

MONUMENT: FOUND , PLACED
 METHOD OF RESTORATION (RE-ESTABLISHMENT):
 ACCEPTED EXISTING MONUMENT
 ACCEPTED OCCUPATION
 LOST CORNER PROPORTIONATE METHODS
 DATE CORNER SET: N/A

- LEGEND**
- ▲ SET #6 REBAR, 1.13 LBS PER LINEAL FT. MIN. WT.
 - SET 1" X 24" IRON PIPE, 1.13 LBS PER LINEAL FT. MIN. WT.
 - SET 2" X 30" IRON PIPE, 3.65 LBS PER LINEAL FT. MIN. WT.
 - FOUND 1" IRON PIPE
 - FOUND 2" IRON PIPE
 - FOUND R/R SPIKE
 - SET R/R SPIKE
 - ⊙ GOVERNMENT CORNER
 - EXISTING FENCE



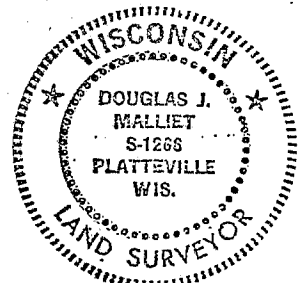
NOT TO SCALE THIS CONFORMS TO WISCONSIN ADMINISTRATIVE CODE A-E 5.02

SURVEYOR'S AFFIDAVIT:

STATE OF WISCONSIN)
GRANT COUNTY) SS

I hereby certify that I, DOUGLAS J. MALLIET, have complied with the Wisconsin State Statutes, Statutes of the United States, and the rules and regulations made by the Secretary of the Interior in the location of the corner shown above.

DATE OF SURVEY: 4-15-83 Douglas J. Malliet
 REGISTERED LAND SURVEYOR
 # 1266



D. F. BURBACH MUNICIPAL & CIVIL ENGINEERS

410 NORTH SECOND STREET • PLATTEVILLE, WISCONSIN 53818 • (608) 348-3262

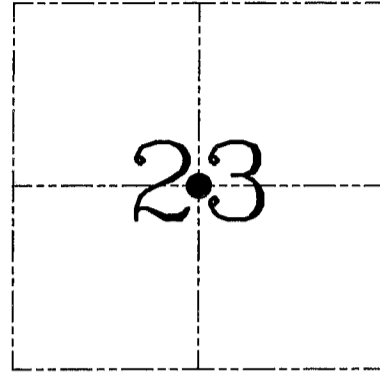
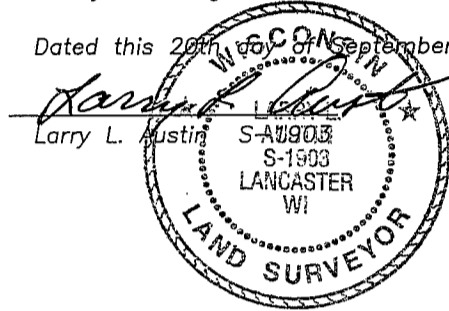
MAY 24 1983

U.S. PUBLIC LAND SURVEY MONUMENT RECORD – GRANT COUNTY, WI
Section 23, Town 3 North Range 1 West, Town of Platteville

CERTIFICATE

I, Larry L. Austin, do hereby certify that the corner location on this record was determined by me and/or under my direct supervision and that this U.S. public land survey monument record is correct and complete to the best of my knowledge and belief.

Dated this 20th day of September, 2004



● = CORNER LOCATION

HISTORY OF CORNER ESTABLISHMENT

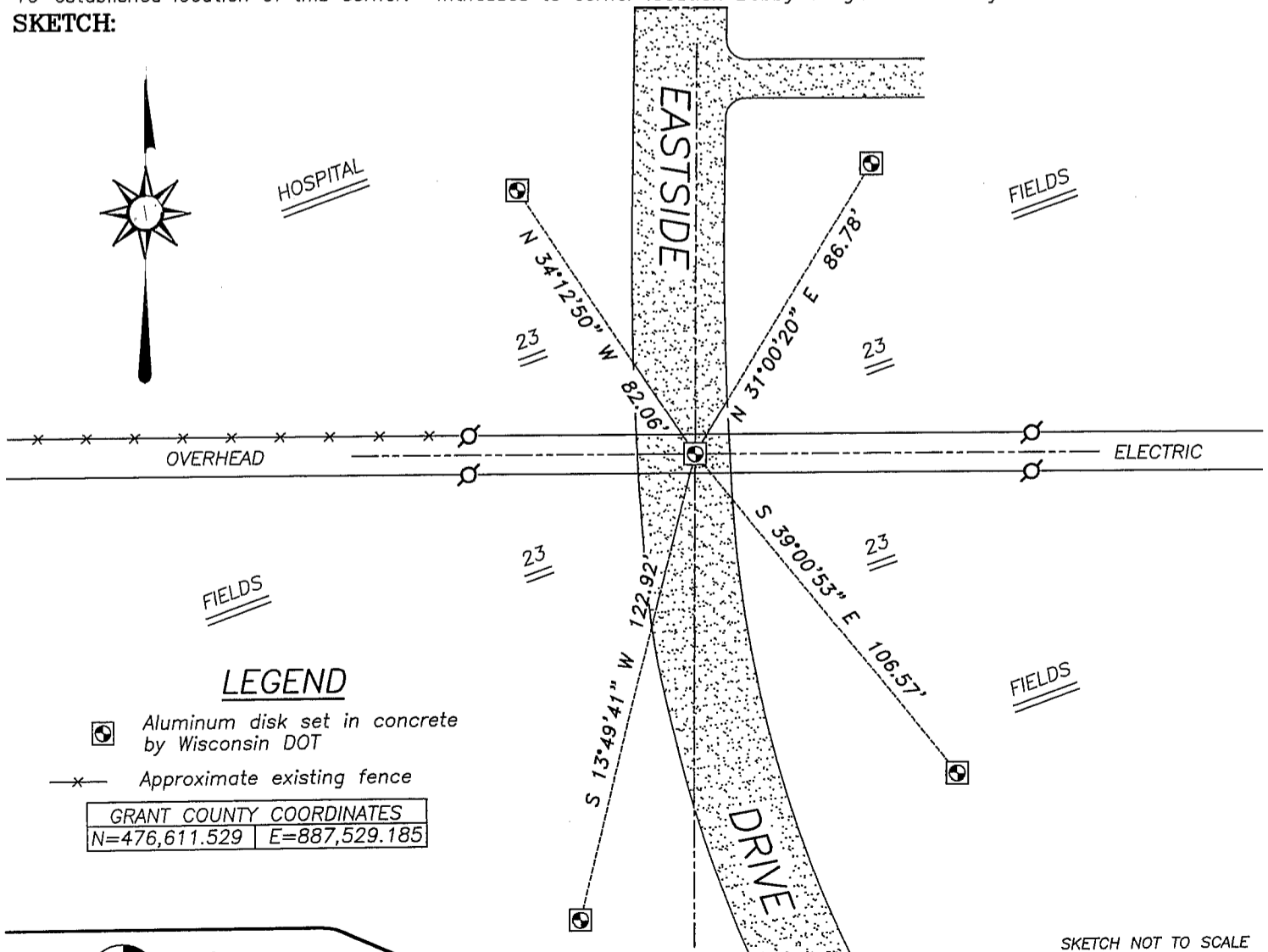
Corner was previously set and tied by myself prior to highway construction.

DESCRIPTION OF CORNER EVIDENCE FOUND

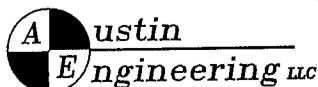
Due to highway construction, the corner and ties were lost. I reset and retied the corner as shown below.

DESCRIPTION OF CORNER AND WITNESS MONUMENTS, references and accessories used to perpetuate the original or re-established location of this corner. Witnesses to corner location Bobby Sedgwick & Shelby Blindert

SKETCH:



SKETCH NOT TO SCALE



4211 HWY 81 E, LANCASTER, WI 53813
 PHONE 608-723-6363 FAX 608-723-6702

JOB NUMBER 04S163
 FIELDBOOK: TSDR, 2412
 G:\T3NR1W\29DOT
 H:\TIE\T3NR1W\78.5

DRAWN BY: SW AUSTIN
 APPROVED: LL AUSTIN

GRANT COUNTY CERTIFIED LAND CORNER

CORNER NO. 78.5

CERTIFICATE:

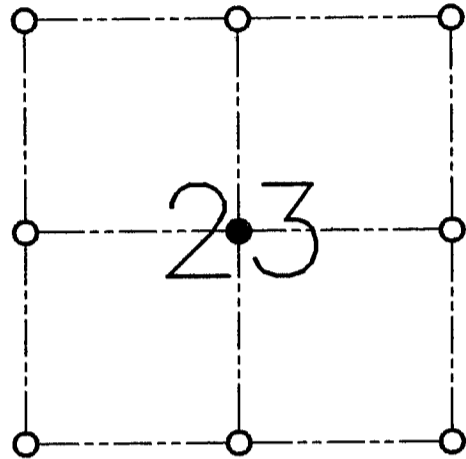
I, LARRY L. AUSTIN, DO HEREBY CERTIFY THAT ON FIRST DAY OF MAY, 1999, I FOUND NO EVIDENCE OF THE CENTER OF SECTION 23, TOWN 3 NORTH, RANGE 1 WEST, OF THE FOURTH PRINCIPAL MERIDIAN, AND I RE-ESTABLISHED SAID CORNER ACCORDING TO THE WISCONSIN STATUTES AS SHOWN AND DESCRIBED HEREON.

DATED THIS DAY OF , 1999

Larry L. Austin
LARRY L. AUSTIN S-1903



SEAL



● = CORNER LOCATION

**CENTER OF SECTION 23
T 3 N R 1 W
TOWN OF PLATTEVILLE**

HISTORY OF ORIGINAL CORNER ESTABLISHMENT:

CORNER WAS NEVER ORIGNALLY SET.

DESCRIPTION OF CORNER EVIDENCE FOUND:

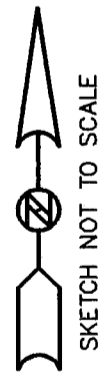
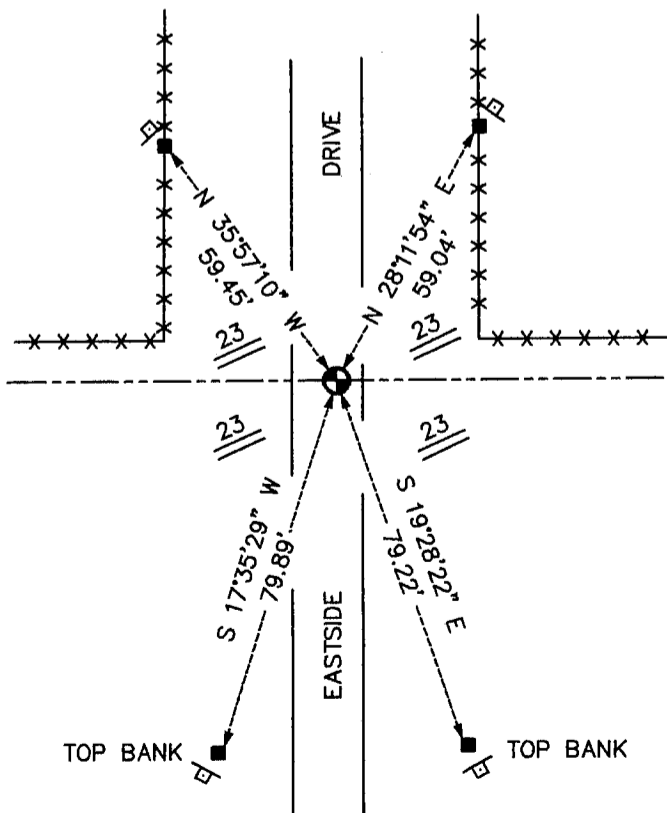
I SET THE CORNER ONLINE BETWEEN THE 1/4 LINES.
VERIFIED THIS LOCATION USING E.D.M. AND G.P.S. METHODS.

DESCRIPTION OF CORNER AND WITNESS MONUMENTS, REFERENCES AND ACCESSORIES USED TO PERPETUATE THE ORIGINAL OR RE-ESTABLISHED LOCATION OF THIS CORNER:

WITNESS TO THE CORNER LOCATION:

BOBBY SEDGWICK
SHELBY BLINDERT

SKETCH:



LEGEND

- NO. 8 X 30" REBAR SET WITH GRANT COUNTY ALUMINUM CAP
- NO. 4 X 24" REBAR SET WITH RED PLASTIC CAP & SIGN
- ×× EXISTING FENCE
- B "D.O.T. SURVEY MARKER NEARBY" SIGN SET