

U.S. PUBLIC LAND SURVEY MONUMENT RECORD - GRANT COUNTY, WI

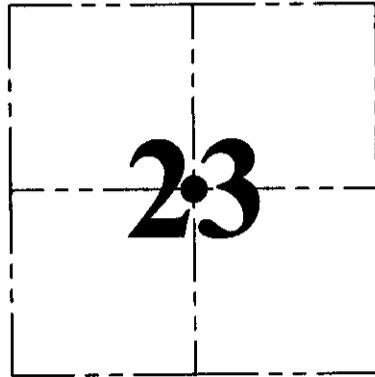
Section 23, Town 3 North Range 1 West, Town of Platteville

CERTIFICATE:

I, Aaron J. Austin, Wisconsin Professional Land Surveyor, do hereby certify that the corner location on this record was determined by me and/or under my direct supervision and that this U.S. Public Land Survey Monument Record is correct and complete to the best of my knowledge and belief.

Dated this 4th day of August, 2015.

Aaron J. Austin
 Aaron J. Austin, S 2222
 LANCASTER
 WI
 LAND SURVEYOR



● = CORNER LOCATION

HISTORY OF CORNER ESTABLISHMENT:

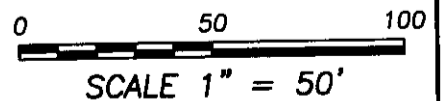
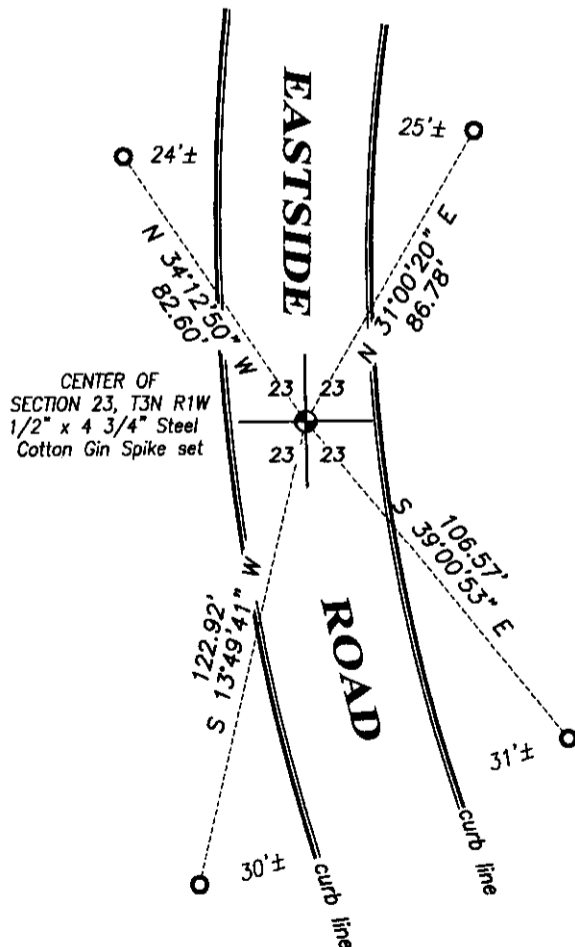
May 1, 1999, Larry Austin set a 1" Rebar with a Grant County Aluminum Cap at the corners location and prepared a tie sheet. In September 20, 2004, Larry Austin reset the corner and new ties and filed a new tie sheet for the corner.

DESCRIPTION OF CORNER EVIDENCE FOUND:

Monument could not be recovered. I found four ties established by Larry Austin on a tie sheet dated 9-20-2004. I reset a 1/2" x 4 3/4" Steel Cotton Gin Spike at the corner location based upon these ties.

DESCRIPTION OF CORNER AND WITNESS MONUMENTS, references and accessories used to perpetuate the original or re-established location of this corner. Witnesses to corner location Shane Austin and Brandon Austin.

SKETCH:



4211 HWY 81 E, LANCASTER, WI 53813
 PHONE: 608-723-6363 FAX: 608-723-6702

JOB NO: 15s130
 H:CRD\15s130
 H:\TIE\T3NR1W\78.5(B)

FIELDBOOK: TDSR
 DRAWN BY: AJ AUSTIN
 CREW: SW AUSTIN, BL AUSTIN

78.5

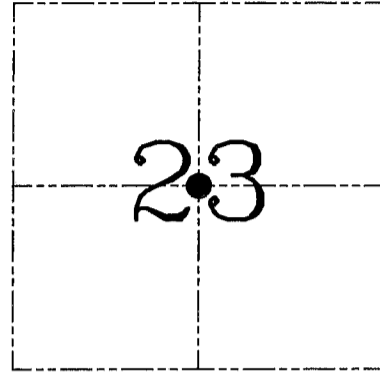
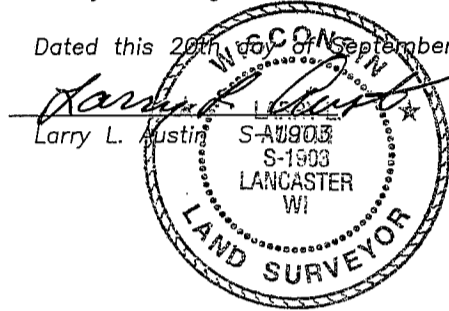
AUG 10 2015

U.S. PUBLIC LAND SURVEY MONUMENT RECORD – GRANT COUNTY, WI
Section 23, Town 3 North Range 1 West, Town of Platteville

CERTIFICATE

I, Larry L. Austin, do hereby certify that the corner location on this record was determined by me and/or under my direct supervision and that this U.S. public land survey monument record is correct and complete to the best of my knowledge and belief.

Dated this 20th day of September, 2004



● = CORNER LOCATION

HISTORY OF CORNER ESTABLISHMENT

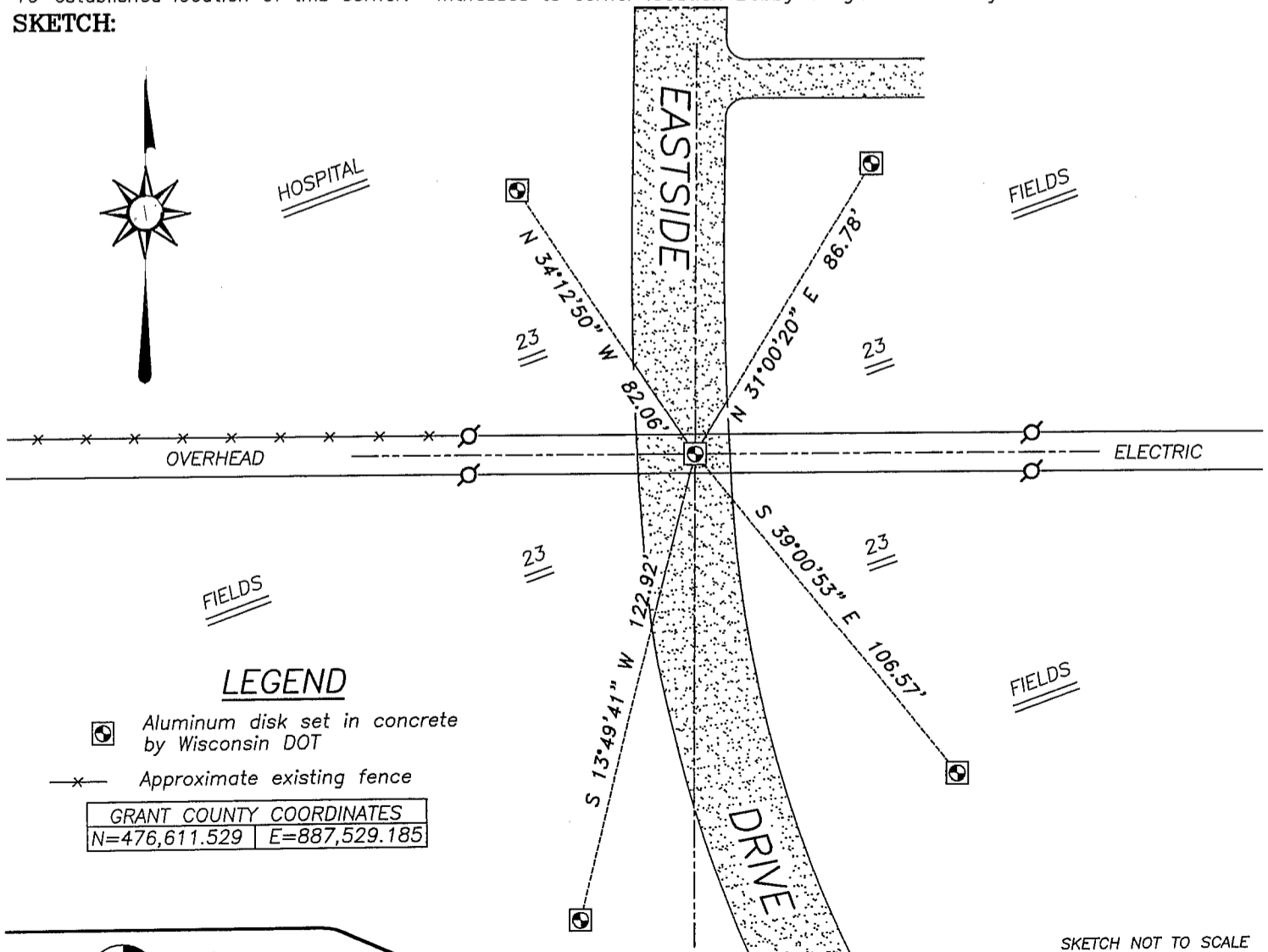
Corner was previously set and tied by myself prior to highway construction.

DESCRIPTION OF CORNER EVIDENCE FOUND

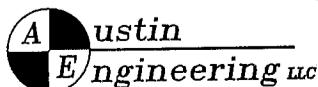
Due to highway construction, the corner and ties were lost. I reset and retied the corner as shown below.

DESCRIPTION OF CORNER AND WITNESS MONUMENTS, references and accessories used to perpetuate the original or re-established location of this corner. Witnesses to corner location Bobby Sedgwick & Shelby Blindert

SKETCH:



SKETCH NOT TO SCALE



4211 HWY 81 E, LANCASTER, WI 53813
 PHONE 608-723-6363 FAX 608-723-6702

JOB NUMBER 04S163
 FIELDBOOK: TSDR, 2412
 G:\T3NR1W\29DOT
 H:\TIE\T3NR1W\78.5

DRAWN BY: SW AUSTIN
 APPROVED: LL AUSTIN

GRANT COUNTY CERTIFIED LAND CORNER

CORNER NO. 78.5

CERTIFICATE:

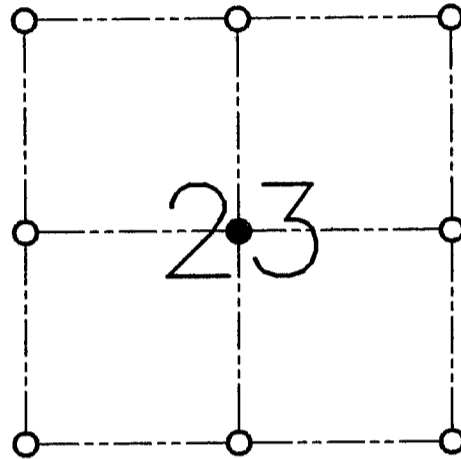
I, LARRY L. AUSTIN, DO HEREBY CERTIFY THAT ON FIRST DAY OF MAY, 1999, I FOUND NO EVIDENCE OF THE CENTER OF SECTION 23, TOWN 3 NORTH, RANGE 1 WEST, OF THE FOURTH PRINCIPAL MERIDIAN, AND I RE-ESTABLISHED SAID CORNER ACCORDING TO THE WISCONSIN STATUTES AS SHOWN AND DESCRIBED HEREON.

DATED THIS DAY OF , 1999

Larry L. Austin
LARRY L. AUSTIN S-1903



SEAL



● = CORNER LOCATION

**CENTER OF SECTION 23
T 3 N R 1 W
TOWN OF PLATTEVILLE**

HISTORY OF ORIGINAL CORNER ESTABLISHMENT:

CORNER WAS NEVER ORIGNALLY SET.

DESCRIPTION OF CORNER EVIDENCE FOUND:

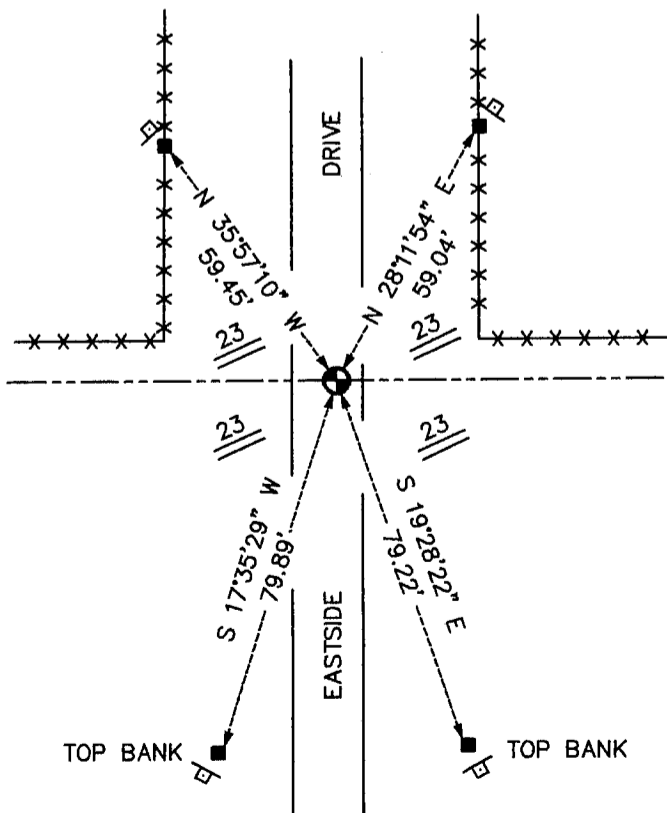
I SET THE CORNER ONLINE BETWEEN THE 1/4 LINES.
VERIFIED THIS LOCATION USING E.D.M. AND G.P.S. METHODS.

DESCRIPTION OF CORNER AND WITNESS MONUMENTS, REFERENCES AND ACCESSORIES USED TO PERPETUATE THE ORIGINAL OR RE-ESTABLISHED LOCATION OF THIS CORNER:

WITNESS TO THE CORNER LOCATION:

BOBBY SEDGWICK
SHELBY BLINDERT

SKETCH:



LEGEND

- NO. 8 X 30" REBAR SET WITH GRANT COUNTY ALUMINUM CAP
- NO. 4 X 24" REBAR SET WITH RED PLASTIC CAP & SIGN
- ×× EXISTING FENCE
- B "D.O.T. SURVEY MARKER NEARBY" SIGN SET