

GRANT COUNTY CERTIFIED LAND CORNER

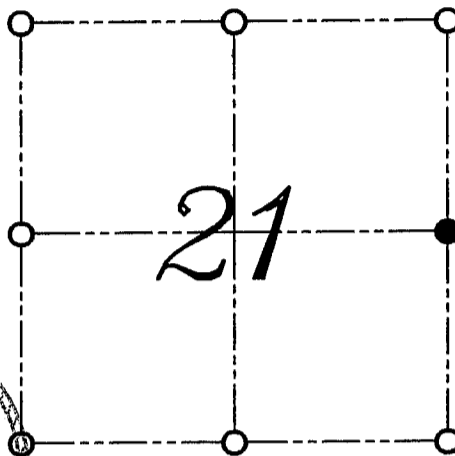
CORNER NUMBER 77

CERTIFICATE:

I, LARRY L. AUSTIN, DO HEREBY CERTIFY THAT ON TWELFTH DAY OF MAY, 1999, I FOUND MONUMENTED EVIDENCE OF THE EAST 1/4 CORNER SECTION 21, TOWN 3 NORTH, RANGE 1 WEST, OF THE FOURTH PRINCIPAL MERIDIAN, AND I RE-ESTABLISHED SAID CORNER ACCORDING TO THE WISCONSIN STATUTES AS SHOWN AND DESCRIBED HEREON.

DATED THIS TWENTY-SECOND DAY OF MAY, 1999

Larry L. Austin
LARRY L. AUSTIN S-1903



● = CORNER LOCATION

EAST 1/4 CORNER OF
SECTION 21, T 3 N R 1 W
TOWN OF PLATTEVILLE



HISTORY OF ORIGINAL CORNER ESTABLISHMENT:

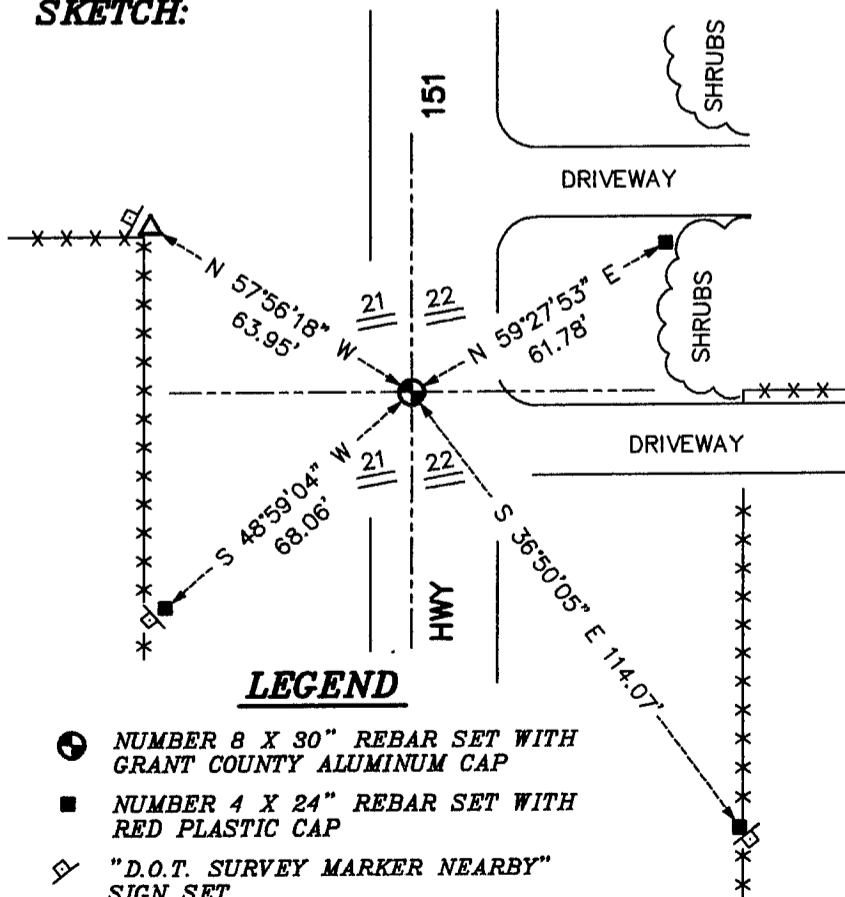
CORNER WAS SET IN 1832 BY ROBERT CLARK.
LARRY SCHMIDT SET THE CORNER IN 1978.

DESCRIPTION OF CORNER EVIDENCE FOUND:

I RESET THE CORNER BASED ON OTHER MONUMENTS SET BY SCHMIDT IN THE AREA.
VERIFIED THIS LOCATION USING E.D.M. AND G.P.S. METHODS.

DESCRIPTION OF CORNER AND WITNESS MONUMENTS, REFERENCES AND ACCESSORIES USED TO PERPETUATE THE ORIGINAL OR RE-ESTABLISHED LOCATION OF THIS CORNER:
WITNESS TO THE CORNER LOCATION: BOBBY SEDGWICK ; SHELBY BLINDERT

SKETCH:



LEGEND

- NUMBER 8 X 30" REBAR SET WITH GRANT COUNTY ALUMINUM CAP
- NUMBER 4 X 24" REBAR SET WITH RED PLASTIC CAP
- ◇ "D.O.T. SURVEY MARKER NEARBY" SIGN SET
- △ 1" IRON PIPE FOUND
- **- EXISTING FENCE LOCATION