

GRANT COUNTY CERTIFIED LAND CORNER

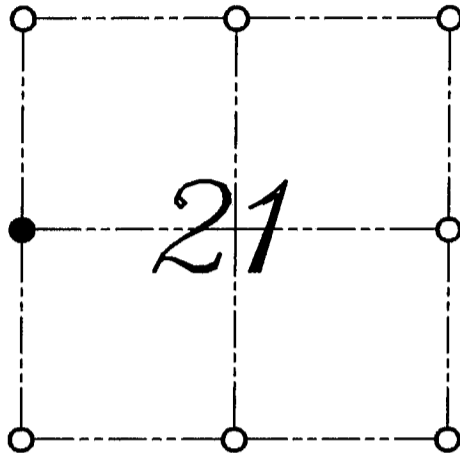
CORNER NUMBER 76

CERTIFICATE:

I, LARRY L. AUSTIN, DO HEREBY CERTIFY THAT ON TWELFTH DAY OF MAY, 1999, I FOUND TESTIMONIAL EVIDENCE OF THE WEST 1/4 CORNER SECTION 21, TOWN 3 NORTH, RANGE 1 WEST, OF THE FOURTH PRINCIPAL MERIDIAN, AND I RE-ESTABLISHED SAID CORNER ACCORDING TO THE WISCONSIN STATUTES AS SHOWN AND DESCRIBED HEREON.

DATED THIS TWENTY-SECOND DAY OF MAY, 1999

Larry L. Austin
LARRY L. AUSTIN S-1903



● = CORNER LOCATION
WEST 1/4 CORNER OF SECTION 21, T 3 N R 1 W TOWN OF PLATTEVILLE

HISTORY OF ORIGINAL CORNER ESTABLISHMENT:

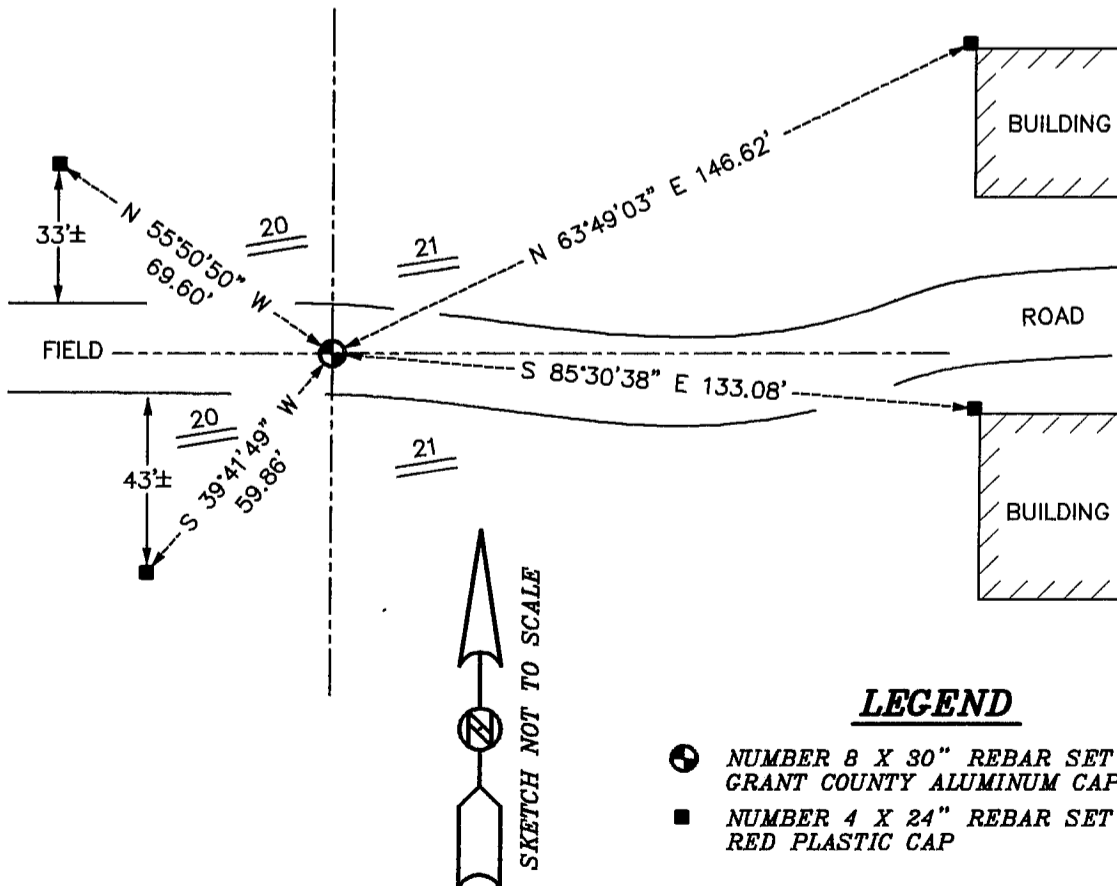
CORNER WAS SET IN 1832 BY ROBERT CLARK. LOCAL RESIDENT STATED THERE WAS A STONE MONUMENT REMOVED.

DESCRIPTION OF CORNER EVIDENCE FOUND:

I SET THE CORNER BASED ON TESTIMONIAL EVIDENCE AND PROPORTIONAL MEASUREMENTS TO THE NORTH AND SOUTH. VERIFIED THIS LOCATION USING E.D.M. AND G.P.S. METHODS.

DESCRIPTION OF CORNER AND WITNESS MONUMENTS, REFERENCES AND ACCESSORIES USED TO PERPETUATE THE ORIGINAL OR RE-ESTABLISHED LOCATION OF THIS CORNER:
WITNESS TO THE CORNER LOCATION: BOBBY SEDGWICK ; LARRY AUSTIN

SKETCH:



LEGEND

- NUMBER 8 X 30" REBAR SET WITH GRANT COUNTY ALUMINUM CAP
- NUMBER 4 X 24" REBAR SET WITH RED PLASTIC CAP