

GRANT COUNTY CERTIFIED LAND CORNER

CORNER NUMBER 76.5

CERTIFICATE:

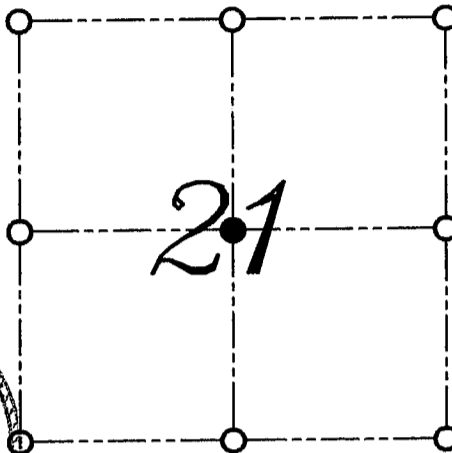
I, LARRY L. AUSTIN, DO HEREBY CERTIFY THAT ON TWELFTH DAY OF MAY, 1999, I FOUND MONUMENTED EVIDENCE OF THE CENTER OF SECTION 21, TOWN 3 NORTH, RANGE 1 WEST, OF THE FOURTH PRINCIPAL MERIDIAN, AND I RE-ESTABLISHED SAID CORNER ACCORDING TO THE WISCONSIN STATUTES AS SHOWN AND DESCRIBED HEREON.

DATED THIS TWENTY-SECOND DAY OF MAY, 1999

Larry L. Austin
LARRY L. AUSTIN S-1903



SEAL



● = CORNER LOCATION
CENTER OF SECTION 21
T 3 N R 1 W
TOWN OF PLATTEVILLE

HISTORY OF ORIGINAL CORNER ESTABLISHMENT:

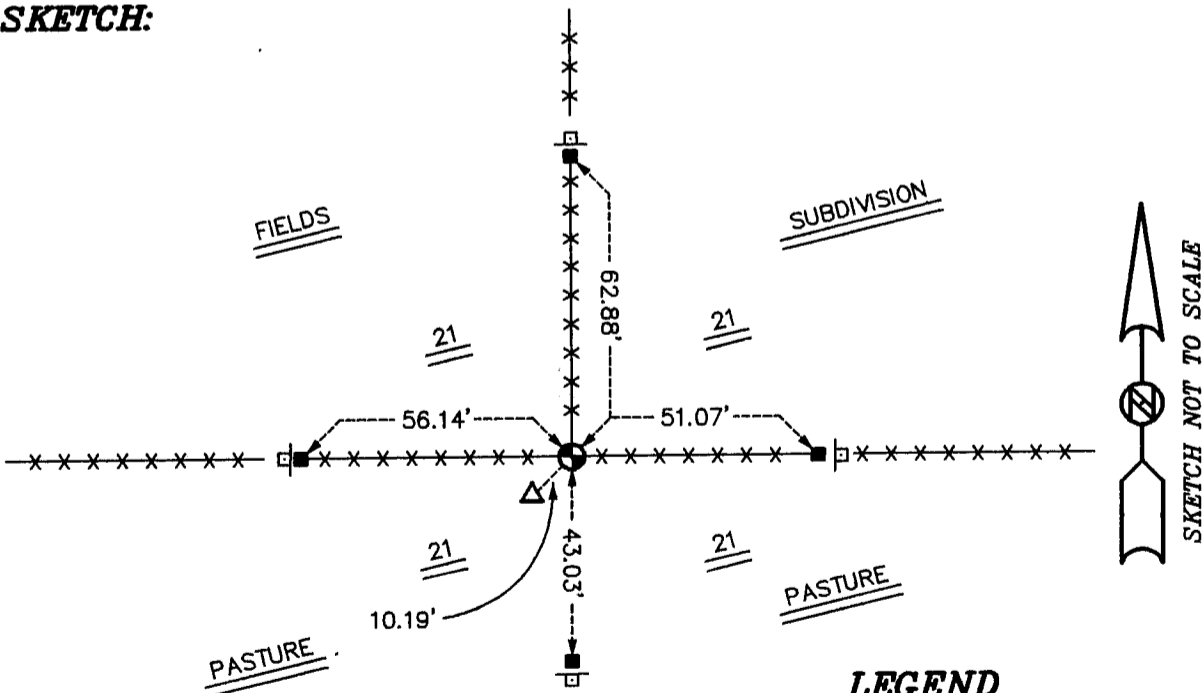
CORNER WAS NEVER ORIGINALLY SET.
LARRY SCHMIDT SET THE CORNER IN 1978.

DESCRIPTION OF CORNER EVIDENCE FOUND:

I ACCEPTED THE #6 IRON BAR SET BY LARRY SCHMIDT.
VERIFIED THIS LOCATION USING E.D.M. AND G.P.S. METHODS.

**DESCRIPTION OF CORNER AND WITNESS MONUMENTS, REFERENCES AND ACCESSORIES
USED TO PERPETUATE THE ORIGINAL OR RE-ESTABLISHED LOCATION OF THIS CORNER:**
WITNESS TO THE CORNER LOCATION: BOBBY SEDGWICK ; SHELBY BLINDERT

SKETCH:



LEGEND

- 3/4" IRON BAR FOUND
- NUMBER 4 X 24" REBAR SET WITH RED PLASTIC CAP AND SIGN
- ×× EXISTING FENCE LOCATION
- ◻ "D.O.T. SURVEY MARKER NEARBY" SIGN SET
- △ 1" IRON PIPE FOUND

SKETCH NOT TO SCALE