

GRANT COUNTY CERTIFIED LAND CORNER

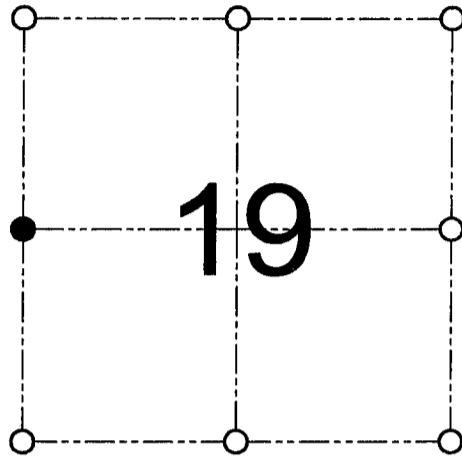
CORNER NUMBER 74

CERTIFICATE:

I, Larry L. Austin, do hereby certify that on the 12th day of September, 2000, I found evidence of the West 1/4 corner of Section 19, Town 3 North, Range 1 West, of the 4th Principal Meridian, and I re-established said corner according to the Wisconsin statutes as shown and described hereon.

Dated this 8th day of November, 2000

Larry L. Austin
Larry L. Austin S-1903



● = CORNER LOCATION

WEST 1/4 CORNER OF
SECTION 19, T 3 N R 1 W
TOWN OF PLATTEVILLE

HISTORY OF ORIGINAL CORNER ESTABLISHMENT:

Corner was never originally set. In 1851 Everett tied to the corner. In 1993 I set an aluminum monument.

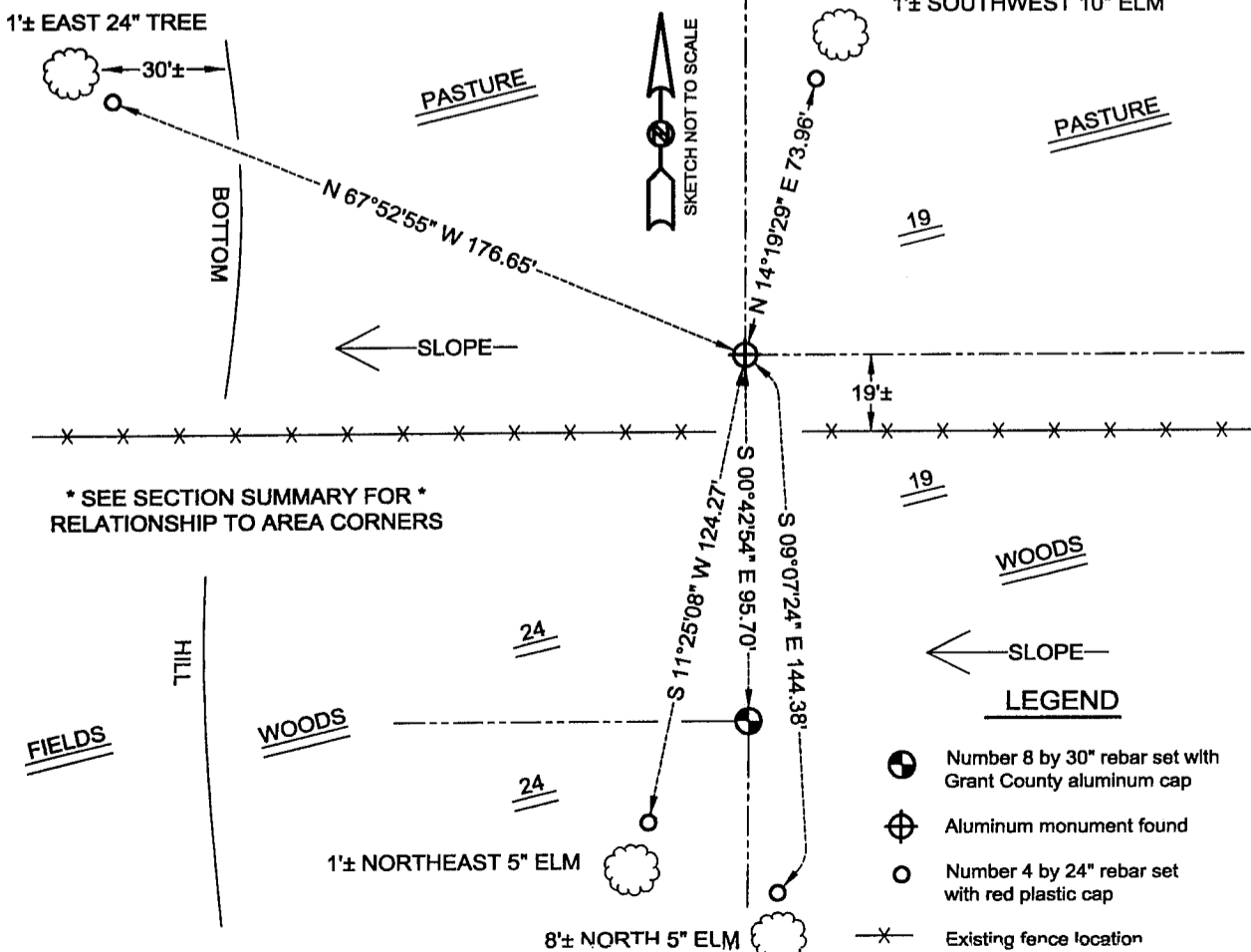
DESCRIPTION OF CORNER EVIDENCE FOUND:

I found the Aluminum monument and accepted it's location after an EDM & GPS traverse of the area.

DESCRIPTION OF CORNER AND WITNESS MONUMENTS, references and accessories used to perpetuate the original or re-established location of this corner

WITNESS TO THE CORNER LOCATION: SHANE AUSTIN & JASON MILES & BOBBY SEDGWICK

SKETCH:



* SEE SECTION SUMMARY FOR *
RELATIONSHIP TO AREA CORNERS

- LEGEND**
- Number 8 by 30" rebar set with Grant County aluminum cap
 - ⊕ Aluminum monument found
 - Number 4 by 24" rebar set with red plastic cap
 - x— Existing fence location