

31073

U.S. PUBLIC LAND SURVEY MONUMENT RECORD - GRANT COUNTY, WI

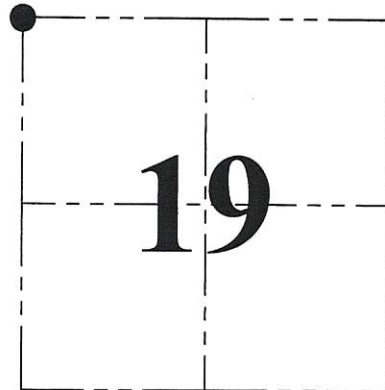
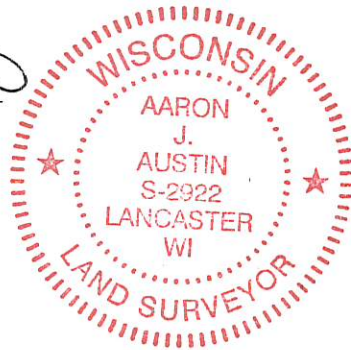
Section 19, Town 3 North Range 1 West, Town of Platteville

CERTIFICATE:

I, Aaron J. Austin, do hereby certify that the corner location on this record was determined by me and/or under my direct supervision and that this U.S. Public Land Survey Monument Record is correct and complete to the best of my knowledge and belief.

Dated this 19th day of May, 2014.

Aaron J. Austin
Aaron J. Austin, S-2922



● = CORNER LOCATION

HISTORY OF CORNER ESTABLISHMENT:

- 1833-Robert Clark set the original corner.
- 1995-David Burbach tied to the corner on a Survey filed in Book Y, Page 11.
- 2002-Larry Austin tied to the corner on a Survey filed in Book 10, Page 93.
- 2011-Aaron Austin tied to the corner on a Survey filed in Book 29, Page 86.

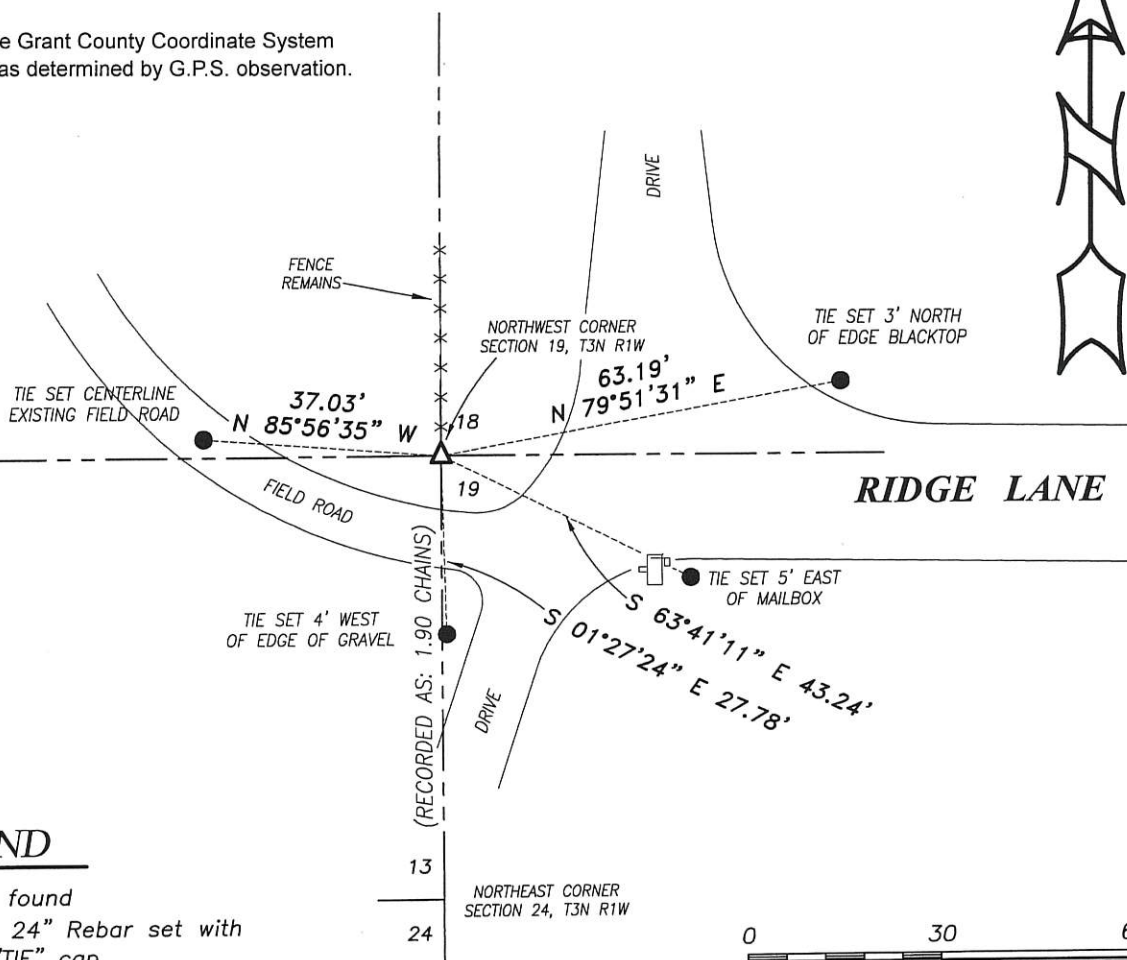
DESCRIPTION OF CORNER EVIDENCE FOUND:

I found and accepted a 1" iron pipe which was tied to in all of the above referenced surveys. I set 4 ties and verified this location with G.P.S. methods.

DESCRIPTION OF CORNER AND WITNESS MONUMENTS, references and accessories used to perpetuate the original or re-established location of this corner. Witnesses to corner location Shane Austin.

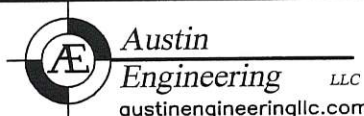
SKETCH:

Bearings referenced to the Grant County Coordinate System (2011 adjustment) which was determined by G.P.S. observation.



LEGEND

- △ 1" Iron pipe found
- Number 4 x 24" Rebar set with red plastic "TIE" cap



4211 HWY 81 E, LANCASTER, WI 53813
PHONE: 608-723-6363 FAX: 608-723-6702

JOB NO: 14s080
G:\14s080
H:\TIE\T3NR1W\73

FIELDBOOK: TDSR
DRAWN BY: AJ AUSTIN
CREW: SW AUSTIN