

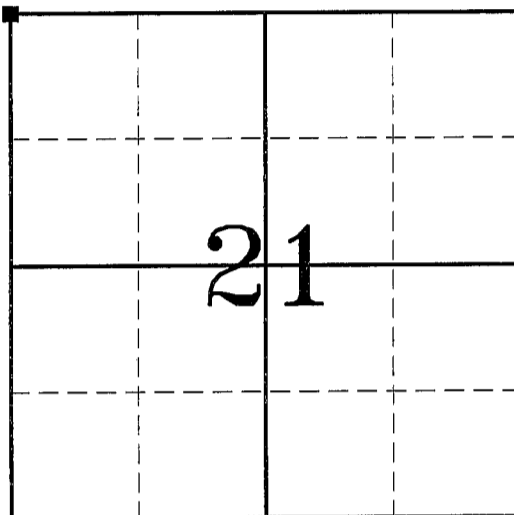
U.S. Public Land Survey Monument Record

GRANT COUNTY, WISCONSIN

IN ACCORDANCE WITH WISCONSIN ADMINISTRATIVE CODE, CHAPTER A-E 7.08 (3) (A) - (I)

(A) THE IDENTITY OF THE CORNER, AS REFERENCE TO THE U.S. PUBLIC LAND SURVEY SYSTEM.

SECTION 21 - TOWN 3 N - RANGE 1 W
 TOWN OF PLATTEVILLE
 CORNER MONUMENT RESTORED NORTHWEST
 TYPE OF MONUMENT 8" DIA. TREATED POST
 HORIZONTAL DATUM GRANT COUNTY
 NORTHING / LATITUDE 479,271.397
 EASTING / LONGITUDE 874,208.004
 VERTICAL DATUM NAVD 88
 ELEVATION 938.10



■ = CORNER MONUMENT RESTORED

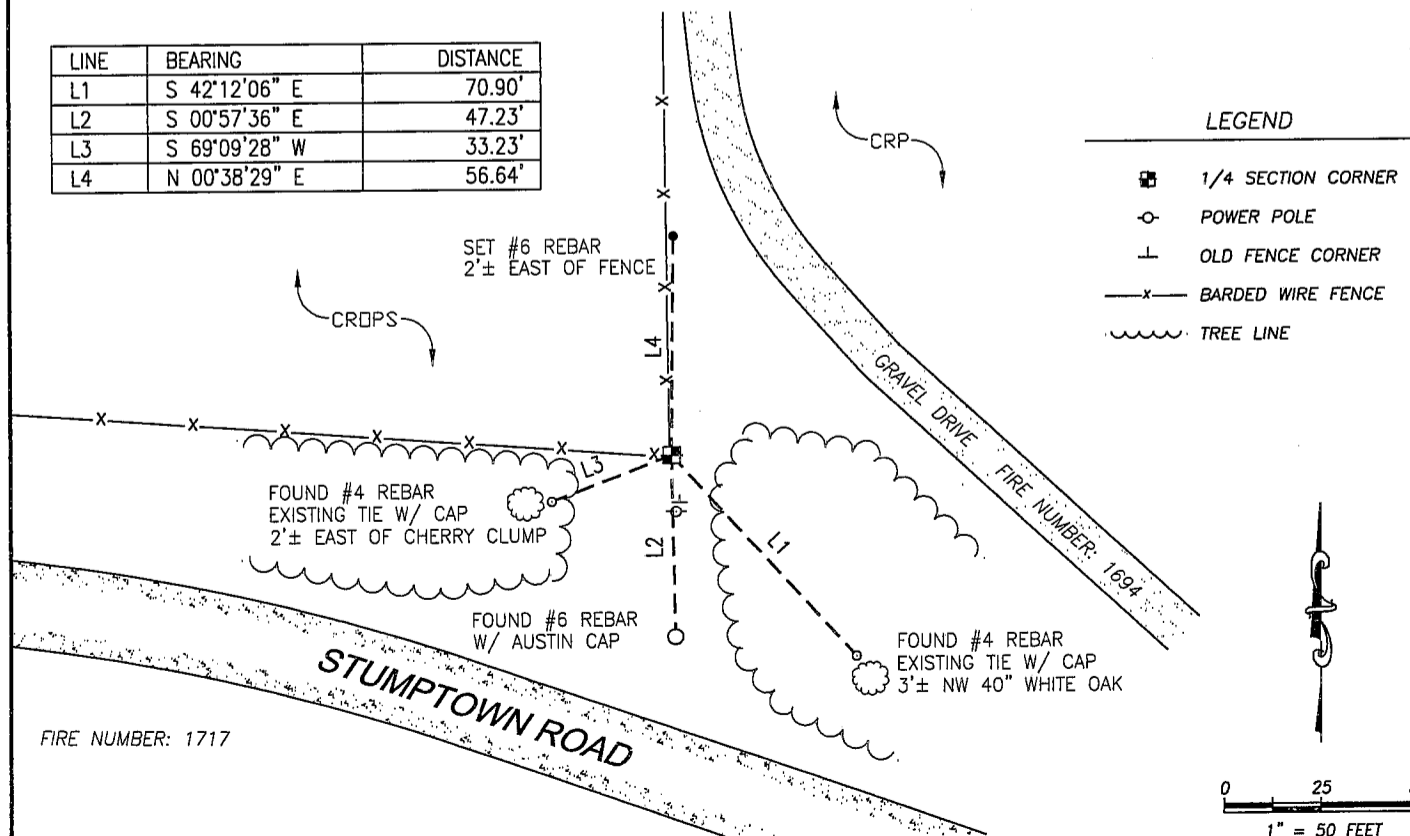
(B) DESCRIBE ANY RECORD EVIDENCE, MONUMENT EVIDENCE, OCCUPATIONAL EVIDENCE, TESTIMONIAL EVIDENCE OR ANY OTHER MATERIAL EVIDENCE YOU CONSIDER, AND WHETHER THE MONUMENT WAS FOUND OR PLACED.

I found the corner monument, the Northerly and Southerly ties disturbed or missing apparently due to the construction of a new fence. I set one new tie and used an Austin-capped rebar for a tie as shown herein.

(C) IN THE PLAN VIEW DRAWING BELOW, PROVIDE REFERENCE TIES TO AT LEAST 4 WITNESS MONUMENTS. WITNESS MONUMENTS SHALL BE CONCRETE, NATURAL STONE, IRON, BEARING TREES OR OTHER EQUALLY DURABLE MATERIAL, EXCEPT WOOD OTHER THAN BEARING TREES;

(D) A PLAN VIEW DRAWING DEPICTING THE RELEVANT MONUMENTS AND REFERENCE TIES WHICH ARE SUFFICIENT IN DETAIL TO ENABLE ACCURATE RELOCATION OF THE CORNER MONUMENT IF THE CORNER MONUMENT IS DISTURBED;

LINE	BEARING	DISTANCE
L1	S 42°12'06" E	70.90'
L2	S 00°57'36" E	47.23'
L3	S 69°09'28" W	33.23'
L4	N 00°38'29" E	56.64'



SHEET 1 OF 2

BEARINGS ARE BASED ON THE GRANT COUNTY COORDINATE SYSTEM

AUG 11 2008

69

(E) DESCRIBE ANY MATERIAL DISCREPANCY BETWEEN THE LOCATION OF THE CORNER AS RESTORED OR REESTABLISHED AND THE LOCATION OF THAT CORNER AS PREVIOUSLY RESTORED OR REESTABLISHED BY DISTANCE AND DIRECTION. SHOW THE DISCREPANCY ON THE PLAN VIEW DRAWING. SHOW THE DISTANCES BETWEEN THE CORNER AND PREVIOUSLY RESTORE OR REESTABLISHED AND (1) THE CORNER AS RESTORED OR REESTABLISHED, AND (2) TO AT LEAST 2 OF THE WITNESS MONUMENTS SHOWN ON THE PLAN VIEW DRAWING.

N.A.

(F) WAS THE CORNER RESTORED THROUGH ACCEPTANCE OF (1) AN OBLITERATED EVIDENCE LOCATION, OR, (2) A FOUND, PERPETUATED LOCATION?

(2) A FOUND, PERPETUATED LOCATION.

(G,H) WAS THE CORNER REESTABLISHED THOUGH LOST CORNER PROPORTIONATE METHODS? IF SO, SHOW THE METHOD, INCLUDING THE DIRECTIONS AND DISTANCED TO OTHER PUBLIC LAND SURVEY CORNERS USED AS EVIDENCE OR USED FOR PROPORTIONING IN DETERMINING THE CORNER LOCATION.

NO.

(I) I, PETER G. LEWIS CERTIFY THAT THE CORNER LOCATION SHOWN ON THIS RECORD WAS DETERMINED BY ME OR UNDER MY DIRECTION AND CONTROL AND THAT THIS U.S. PUBLIC LAND SURVEY MONUMENT RECORD IS CORRECT AND COMPLETE TO THE BEST OF MY KNOWLEDGE AND BELIEF.



Peter G. Lewis

July 16, 2008

PETER G. LEWIS WISCONSIN REGISTERED LAND SURVEYOR, S-2740

CERTIFIED DATE



**KAPITAN
ENGINEERING, INC.**

SAUK CITY, WISCONSIN (608) 643-6477

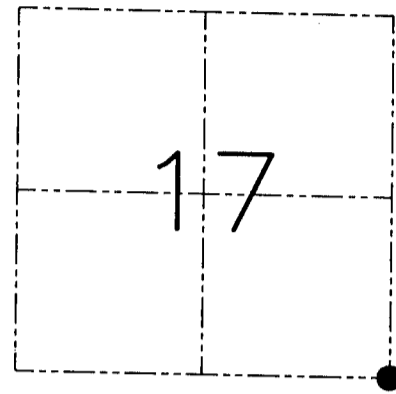
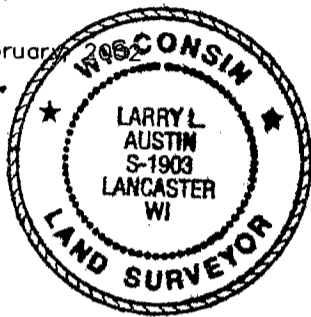
U.S. PUBLIC LAND SURVEY MONUMENT RECORD – GRANT COUNTY, WI
 Section 17, Town 3 North Range 1 West, Town of Platteville

CERTIFICATE

I, Larry L. Austin, do hereby certify that the corner location on this record was determined by me and/or under my direct supervision and that this U.S. public land survey monument record is correct and complete to the best of my knowledge and belief.

Dated this 16th day of February, 2006

Larry L. Austin
 Larry L. Austin S-1903



● = CORNER LOCATION

HISTORY OF CORNER ESTABLISHMENT

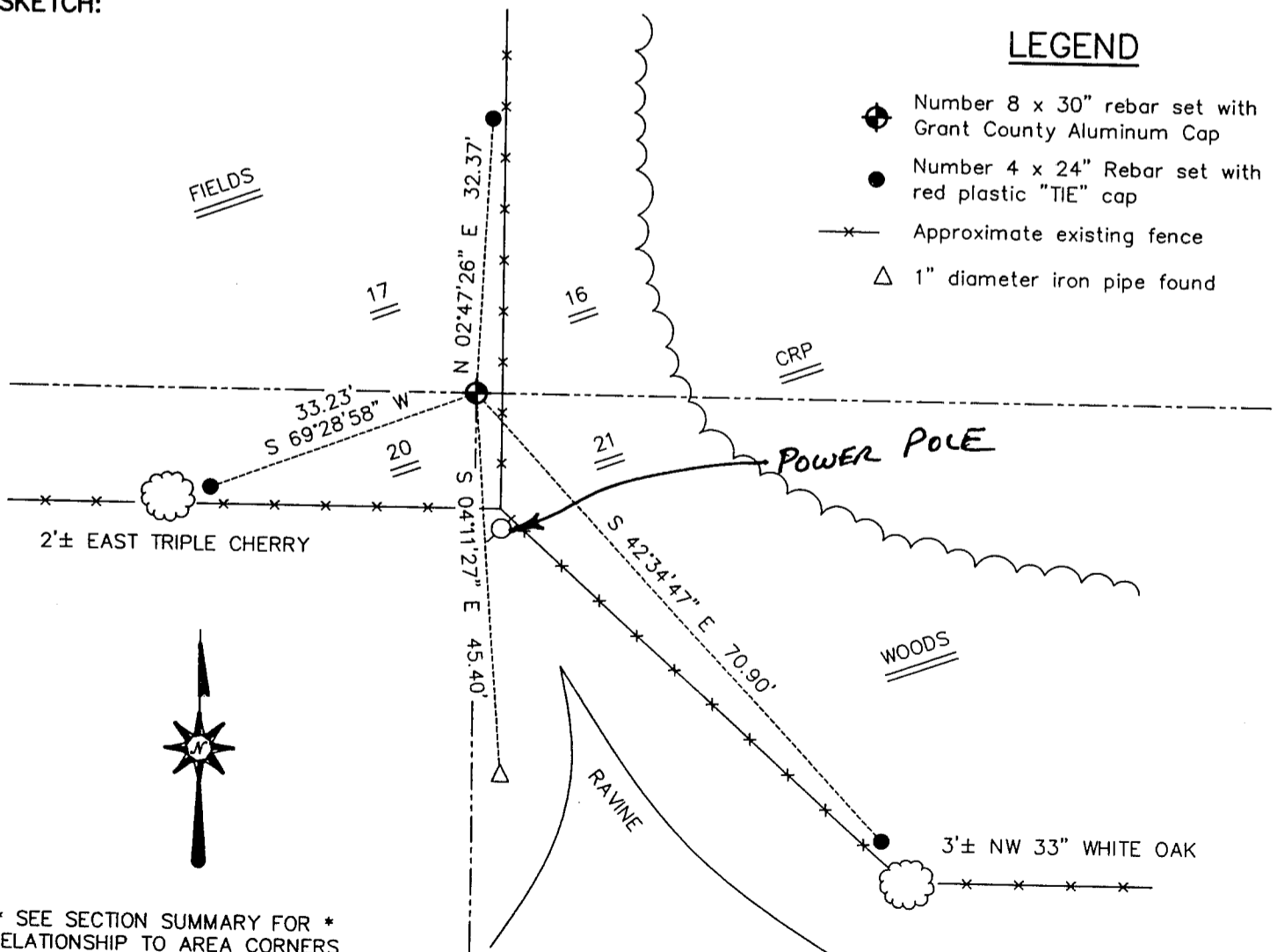
Corner was originally set in 1833 by Robert Clark. In 1889 Gould tied to the original corner in conjunction with a survey done in Section 16.

DESCRIPTION OF CORNER EVIDENCE FOUND

I found no evidence to the location of the original corner. I did find a 1" iron pipe of unknown origin. I reset the corner by doubling the East line of the Southeast 1/4 of the Northeast 1/4 of Section 20, North as monumented. Verified this location using EDM & GPS methods.

DESCRIPTION OF CORNER AND WITNESS MONUMENTS, references and accessories used to perpetuate the original or re-established location of this corner. Witnesses to the corner location Bobby Sedgwick & Shane Austin

SKETCH:



LEGEND

- ◆ Number 8 x 30" rebar set with Grant County Aluminum Cap
- Number 4 x 24" Rebar set with red plastic "TIE" cap
- x— Approximate existing fence
- △ 1" diameter iron pipe found

* SEE SECTION SUMMARY FOR *
 RELATIONSHIP TO AREA CORNERS

SKETCH NOT TO SCALE

AUSTIN ENGINEERING, LLC

FIELDBOOK: SDR33, 2135
 G: \T3NR2W\09
 C: \SWA\TIE\T3NR1W\70
 CREW: BS-SB-SA-BD

DRAWN BY: SW AUSTIN
 APPROVED: LL AUSTIN

4211 HWY 81 EAST, LANCASTER, WI 53813
 PHONE 608-723-6363 FAX 608-723-6702

CORNER NUMBER 69