

UNITED STATES PUBLIC LAND SURVEY MONUMENT RECORD

GRANT COUNTY, WISCONSIN

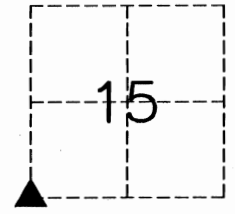
SECTION 15, TOWN 3 NORTH, RANGE 1 WEST, TOWN OF PLATTEVILLE

DESCRIPTION OF CORNER EVIDENCE FOUND:

FOUND AND ACCEPTED 2" IRON PIPE AT THE LOCATION OF CORNER DESCRIBED BY DOUGLAS J. MALLIET IN 1983. CONSTRUCTION OF MARKEE AVENUE DURING 2010 DESTROYED MONUMENT LOCATION.

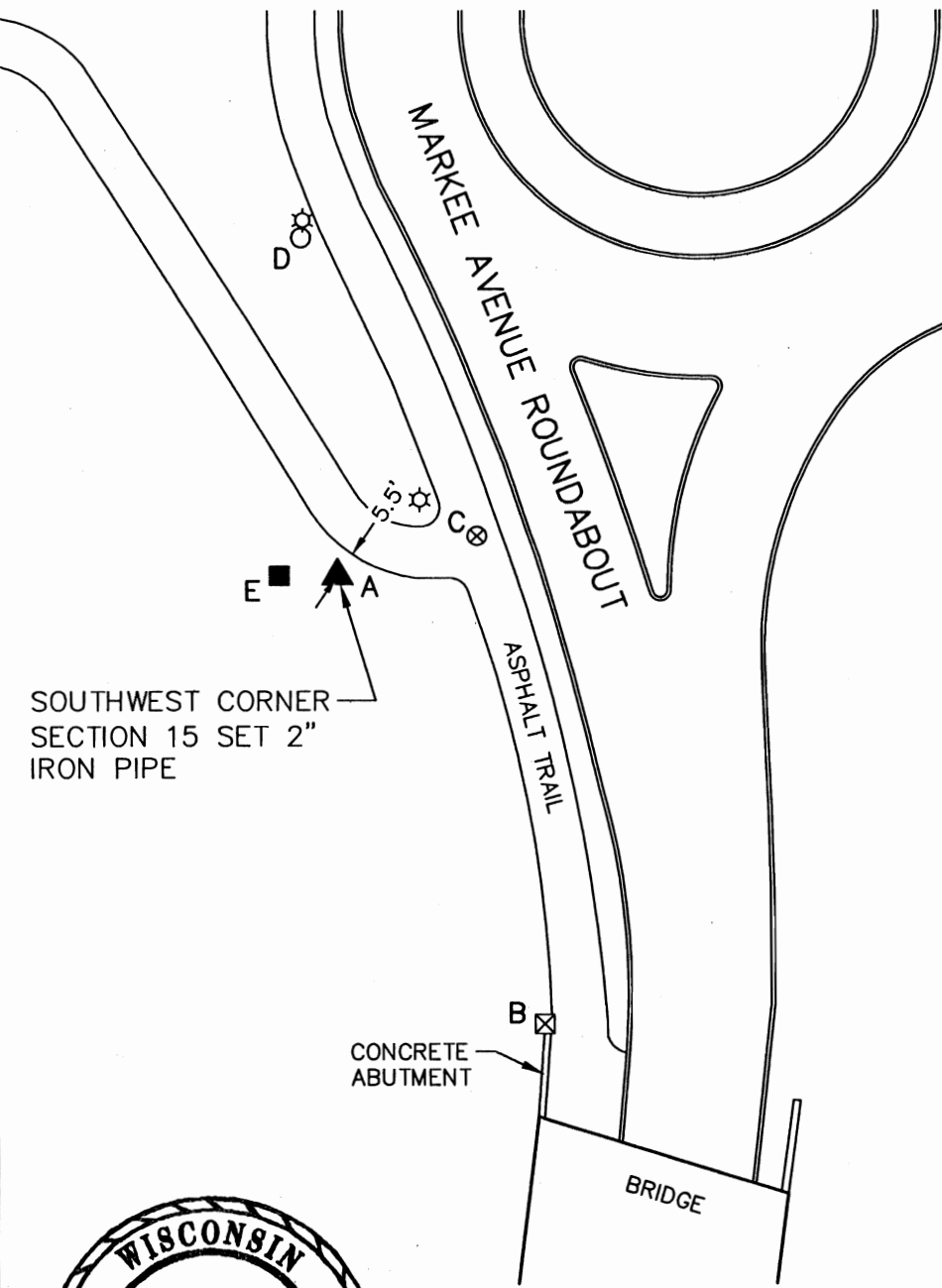
DESCRIPTION OF CORNER AND WITNESS MONUMENTS:

SET 2" IRON PIPE IN SAME LOCATION AFTER COMPLETION OF CONSTRUCTION USING GPS METHODS.



SOUTHWEST CORNER SECTION 15, T3N, R1W TOWN OF PLATTEVILLE

PLAN - VIEW

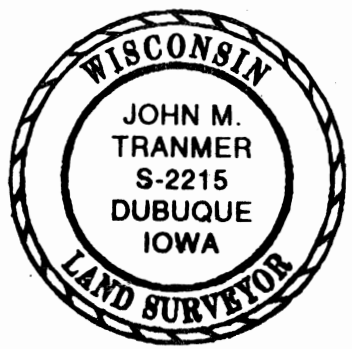


SOUTHWEST CORNER SECTION 15 SET 2" IRON PIPE

LEGEND

- ▲ USPLS CORNER MONUMENT AS NOTED
- ⊠ NW CORNER BRIDGE ABUTMENT WALL
- ⊗ SET MAG NAIL IN ASPHALT TRAIL
- SET 5/8" IRON ROD
- FOUND 3/4" IRON ROD
- ☆ LIGHT POLE

A-B	S24°36'28"E	103.69'
A-C	N73°50'14"E	30.34'
A-D	N06°06'05"W	71.94'
A-E	N89°49'49"W	12.16'



I, JOHN M. TRANMER, CERTIFY THAT THE CORNER LOCATION SHOWN ON THIS RECORD WAS DETERMINED BY ME OR UNDER MY DIRECTION AND CONTROL AND THAT THIS U.S. PUBLIC LAND SURVEY MONUMENT RECORD IS CORRECT AND COMPLETE TO THE BEST OF MY KNOWLEDGE AND BELIEF.

FOR IIW, P.C.

John M. Tranmer 7/01/11
 JOHN M. TRANMER S-2215-8 DATE

<p>www.iiwengr.com • 800.556.4491</p>		ARCHITECTURE CIVIL ENGINEERING CONSTRUCTION SERVICES ENVIRONMENTAL ENGINEERING LAND SURVEYING MUNICIPAL ENGINEERING STRUCTURAL ENGINEERING TRANSPORTATION ENGINEERING	
DRAWN	ARC	FIELD BK.	417
CHECKED	JMT	PROJ. NO.	10245-01
DATE	06-29-11	SHEET	1 of 1
P:\10\245\245-01\DRAWINGS\SURVEY\10245-01CT			

US. PUBLIC LAND SURVEY MONUMENT RECORD

CORNER DESCRIPTION: NW CORNER, SECTION 22, T 3 N, R 1 W

STATE PLANE COORDINATES: N _____, E _____

THETA ANGLE: _____

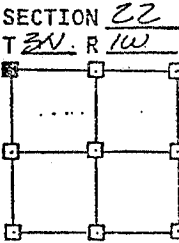
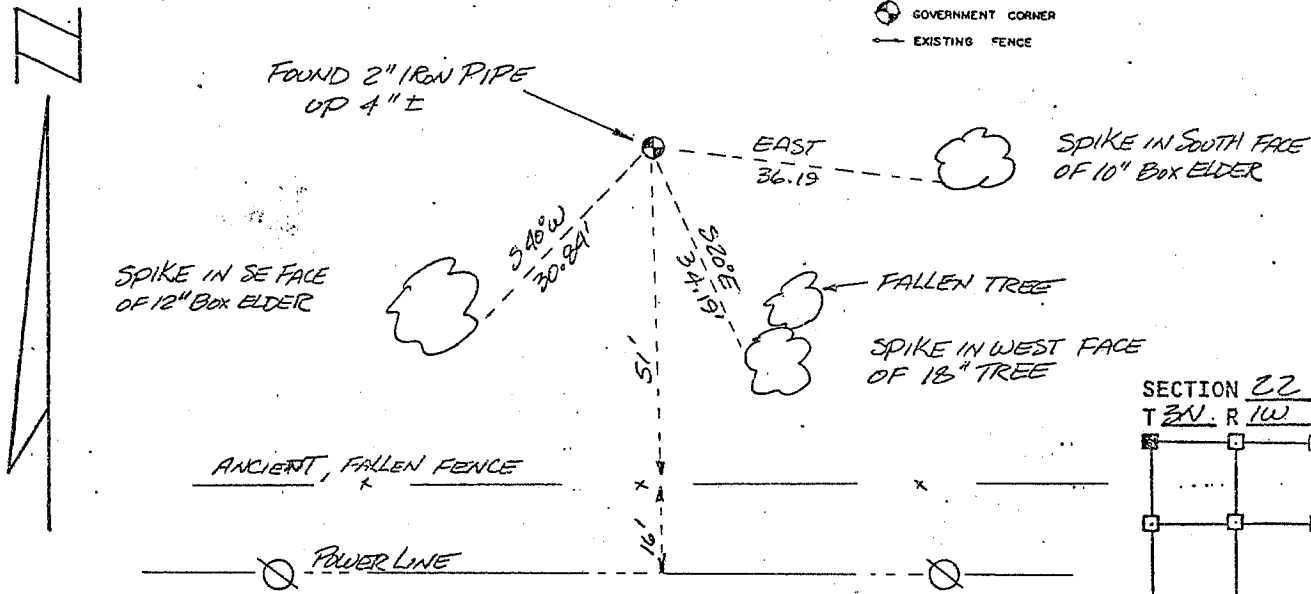
HORIZONTAL DATUM: WISCONSIN STATE PLANE COORDINATE SYSTEM, SOUTH ZONE

EVIDENCE: EXISTING MONUMENT IN GOOD CONDITION

MONUMENT: FOUND , PLACED
 METHOD OF RESTORATION (RE-ESTABLISHMENT):
 ACCEPTED EXISTING MONUMENT
 ACCEPTED OCCUPATION
 LOST CORNER PROPORTIONATE METHODS
 DATE CORNER SET: N/A

LEGEND

- ▲ SET #6 REBAR, 1.13 LBS PER LINEAL FT. MIN. WT.
- SET 1" X 24" IRON PIPE, 1.13 LBS. PER LINEAL FT. MIN. WT.
- SET 2" X 30" IRON PIPE, 3.65 LBS. PER LINEAL FT. MIN. WT.
- FOUND 1" IRON PIPE
- FOUND 2" IRON PIPE
- FOUND R/R SPIKE
- SET R/R SPIKE
- ⊕ GOVERNMENT CORNER
- EXISTING FENCE



NOT TO SCALE THIS CONFORMS TO WISCONSIN ADMINISTRATIVE CODE A-F 5.02

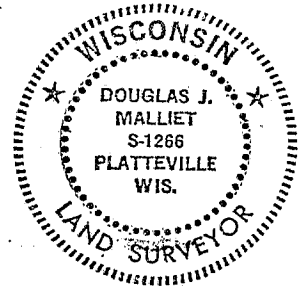
SURVEYOR'S AFFIDAVIT:

STATE OF WISCONSIN)
GRANT COUNTY) SS

I hereby certify that I, DOUGLAS J. MALLIET, have complied with the Wisconsin State Statutes, Statutes of the United States, and the rules and regulations made by the Secretary of the Interior in the location of the corner shown above.

DATE OF SURVEY: 4-15-83

Douglas J. Malliet
 REGISTERED LAND SURVEYOR
 # 1266



D. F. BURBACH MUNICIPAL & CIVIL ENGINEERS

410 NORTH SECOND STREET • PLATTEVILLE, WISCONSIN 53818 • (606) 348-3262

MAY 24 1983

p. 67