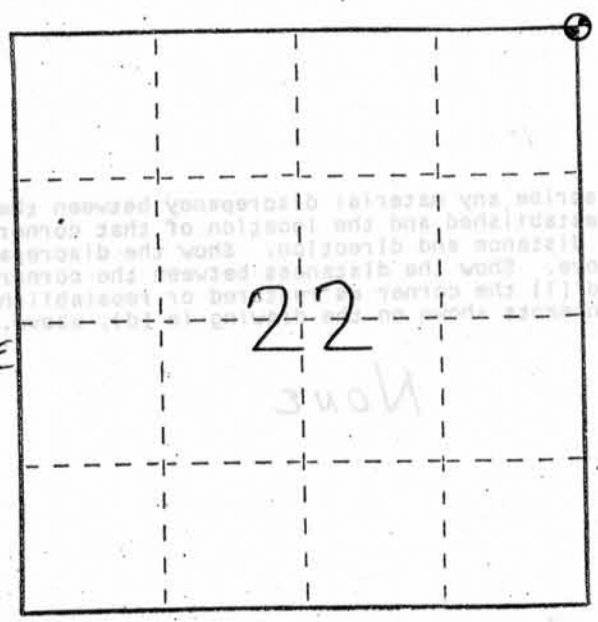


# U. S. PUBLIC LAND SURVEY MONUMENT RECORD

INSTRUCTIONS: This record shall show the location of the corner and shall include all of the following nine elements (a through i).

- (a) Identify the corner by reference to the U.S. public land survey system.
- = Corner monument restored.

NORTHEAST CORNER OF  
SECTION 22, TOWN 3 NORTH,  
RANGE 1 WEST, PLATTEVILLE  
TOWNSHIP, GRANT  
COUNTY, WI

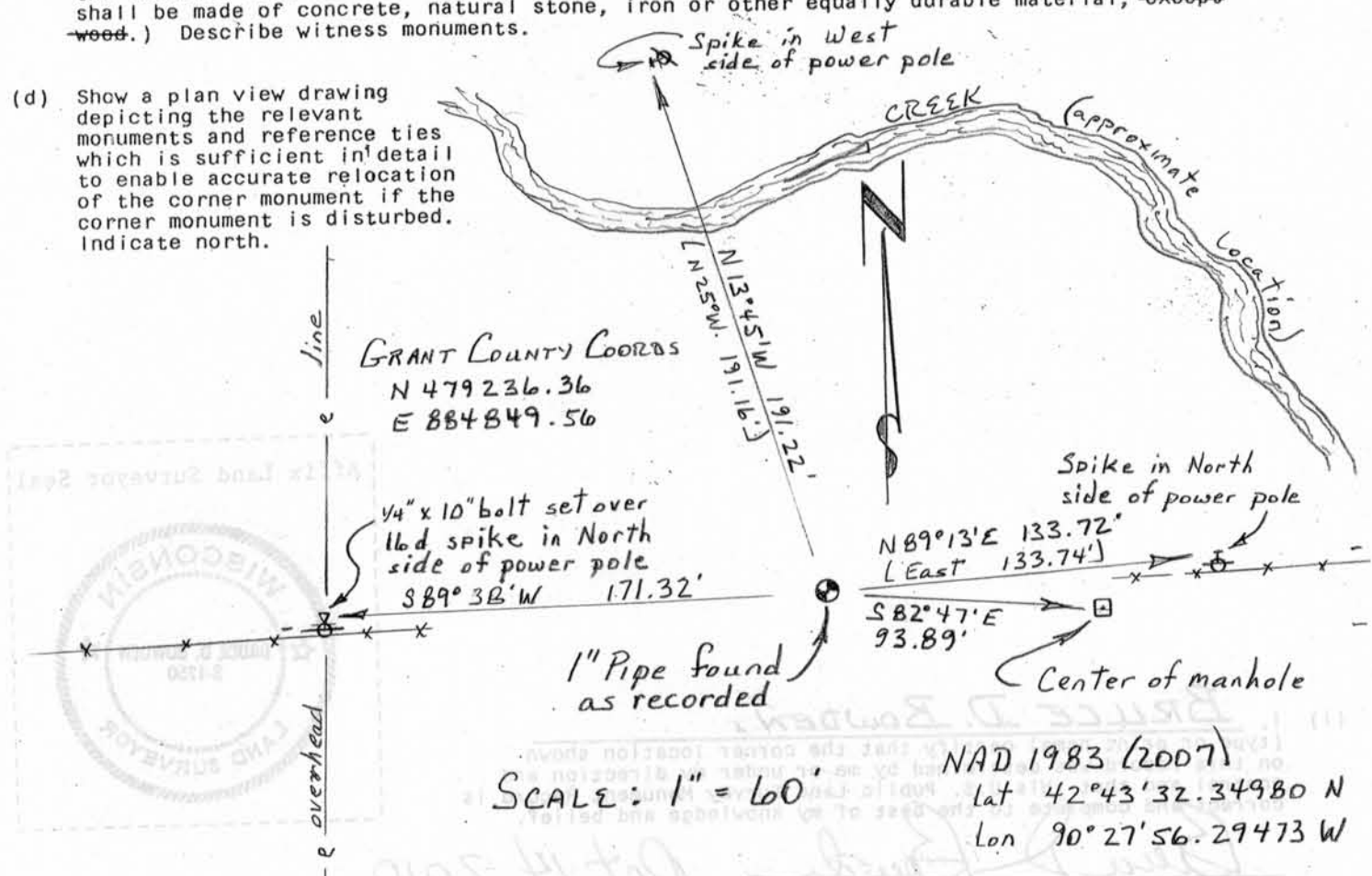


- (b) Describe any record evidence, monument evidence, occupational evidence, testimonial evidence or any other material evidence you considered, and whether the monument was found or placed.

MONUMENT FOUND AND ACCEPTED AS SET BY  
L.E. SCHMIT IN SEPT. 1977 AND SHOWN ON MONUMENT  
RECORD BY D.J. MALLIET ON APRIL 15, 1983.  
LOCATION ALSO MATCHES PHYSICAL EVIDENCE OF  
FENCES IN THE AREA.

- (c) In the plan view drawing below, provide reference ties to at least 4 witness monuments, or, if the location is within a municipality, to at least 2 witness monuments. (Witness monuments shall be made of concrete, natural stone, iron or other equally durable material, ~~except~~ wood.) Describe witness monuments.

- (d) Show a plan view drawing depicting the relevant monuments and reference ties which is sufficient in detail to enable accurate relocation of the corner monument if the corner monument is disturbed. Indicate north.



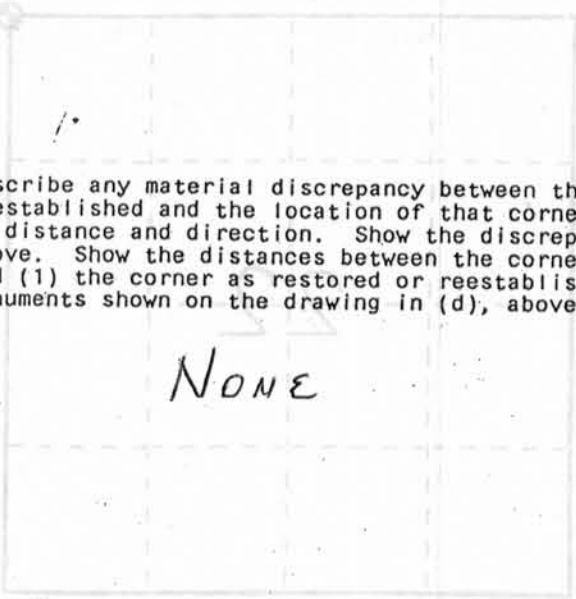
OCT 25 2010

U. S. PUBLIC LAND SURVEY MONUMENT RECORD

This record shall show the location of the corner and shall include all of the following information (a through i)

(a) Identify the corner by reference to the U.S. public land survey system. (b) Corner monument restored.

- (e) Describe any material discrepancy between the location of the corner as restored or reestablished and the location of that corner as previously restored or reestablished by distance and direction. Show the discrepancy on the plan view drawing under (d), above. Show the distances between the corner as previously restored or reestablished and (1) the corner as restored or reestablished, and (2) to at least 2 of the witness monuments shown on the drawing in (d), above.



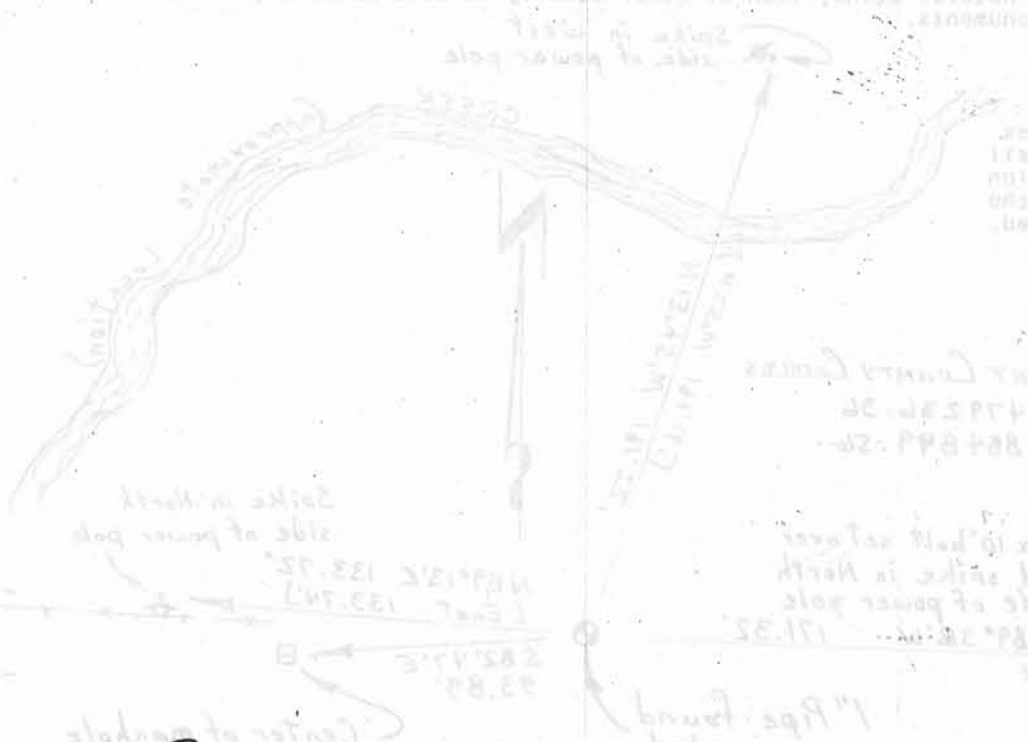
NORTHEAST CORNER OF SECTION 10, RANGE 1 WEST, TOWNSHIP 9 GRANT COUNTY, WI

- (f) Was the corner restored through acceptance of (1) an obliterated evidence location, or, (2) a found perpetuated location?

(2) A FOUND PERPETUATED LOCATION

- (g&h) Was the corner reestablished through lost corner proportionate methods? If so, show the method, including the directions and distances to other public land survey corners used as evidence or used for proportioning in determining the corner location?

No



(c) In the plan view drawing below, provide reference lines to at least 2 witness monuments. (d) Describe any material evidence, monument evidence, obliterated evidence, or other evidence you considered, and whether the monument was found or placed.

Affix Land Surveyor Seal



(i) I, BRUCE D. BOWDEN, (type or print name) certify that the corner location shown on this record was determined by me or under my direction and control and that this U.S. Public Land Survey Monument Record is correct and complete to the best of my knowledge and belief.

Signature Bruce D. Bowden Date Oct 14, 2010

# U.S. PUBLIC LAND SURVEY MONUMENT RECORD

CORNER DESCRIPTION: NE CORNER, SECTION 22, T 3 N, R 1 W

STATE PLANE COORDINATES: N \_\_\_\_\_, E \_\_\_\_\_

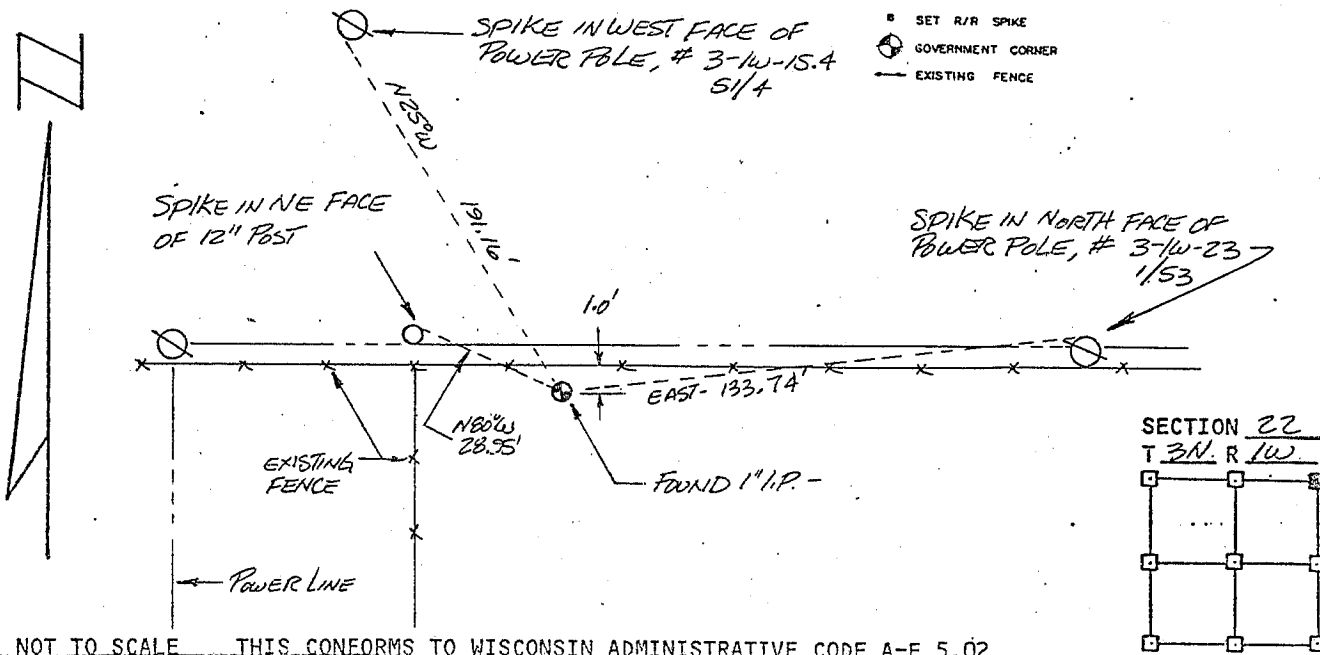
THETA ANGLE: \_\_\_\_\_

HORIZONTAL DATUM: WISCONSIN STATE PLANE COORDINATE SYSTEM, SOUTH ZONE

EVIDENCE: EXISTING MONUMENT IN GOOD CONDITION - 1" I.P. UP 4" ± - RECORDED ON L.E. SCHMIDT'S SURVEY FOR W.O. WILLIAMS OF 9-13-77

MONUMENT: FOUND , PLACED   
 METHOD OF RESTORATION (RE-ESTABLISHMENT):  
 ACCEPTED EXISTING MONUMENT  
 N , E  ACCEPTED OCCUPATION  
 N , E  LOST CORNER PROPORTIONATE METHODS  
 DATE CORNER SET: N/A

- LEGEND**
- ▲ SET #6 REBAR, 1.13 LBS PER LINEAL FT. MIN. WT.
  - SET 1" X 24" IRON PIPE, 1.13 LBS. PER LINEAL FT. MIN. WT.
  - SET 2" X 30" IRON PIPE, 3.65 LBS. PER LINEAL FT. MIN. WT.
  - FOUND 1" IRON PIPE
  - FOUND 2" IRON PIPE
  - FOUND R/R SPIKE
  - SET R/R SPIKE
  - ⊙ GOVERNMENT CORNER
  - EXISTING FENCE



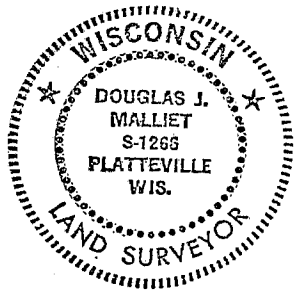
NOT TO SCALE THIS CONFORMS TO WISCONSIN ADMINISTRATIVE CODE A-E 5.02

SURVEYOR'S AFFIDAVIT:  
 STATE OF WISCONSIN)  
GIRANT COUNTY) SS

I hereby certify that I, DOUGLAS J. MALLIET, have complied with the Wisconsin State Statutes, Statutes of the United States, and the rules and regulations made by the Secretary of the Interior in the location of the corner shown above.

DATE OF SURVEY: 4-15-83

Douglas J. Malliet  
 REGISTERED LAND SURVEYOR  
 # 1260



**D. F. BURBACH MUNICIPAL & CIVIL ENGINEERS**

410 NORTH SECOND STREET • PLATTEVILLE, WISCONSIN 53818 • (608) 348-3262

MAY 24 1983

P.65