

RECEIVED

31064

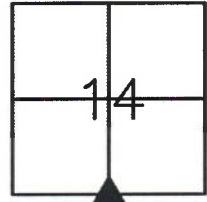
By Land Information Office at 10:42 am, Feb 25, 2020

PREPARED BY: IIW, P.C. 4155 PENNSYLVANIA AVE DUBUQUE, IOWA (563) 556-2464

UNITED STATES PUBLIC LAND SURVEY MONUMENT RECORD
GRANT COUNTY, WISCONSIN
SECTION 14, TOWNSHIP 3 NORTH, RANGE 1 WEST OF THE 4TH P.M.

HISTORY OF CORNER:

ORIGINAL CORNER SET IN 1833 BY ROBERT CLARK. IN 1989 BRUCE BOWDEN TIED AN EXISTING #10 REBAR WHICH WAS USED FOR AREA SURVEYS. IN 1999 LARRY AUSTIN FOUND AND ACCEPTED IT'S LOCATION AND ESTABLISHED NEW SWING TIES.

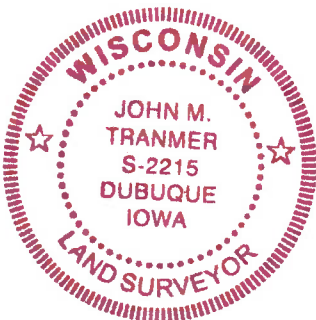
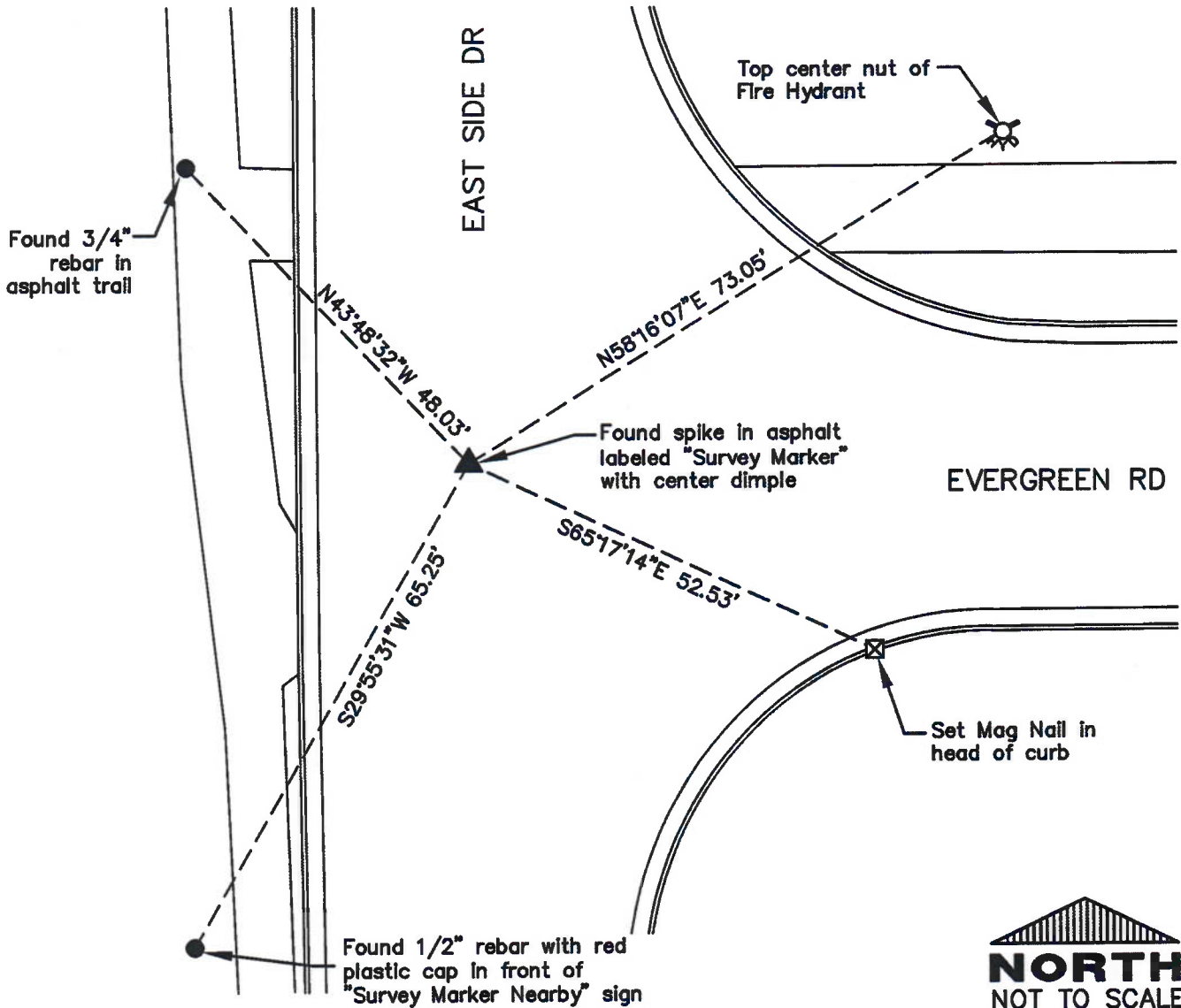


SOUTH 1/4 CORNER
SEC 14, T3N, R1W
TOWN OF PLATTEVILLE
CORNER NUMBER 64

DESCRIPTION OF CORNER AND EVIDENCE FOUND:


FOUND SPIKE IN ASPHALT AT CORNER LOCATION LABELED "SURVEY MARK" WITH DIMPLE IN CENTER. THIS SPIKE/PLUG HAS BEEN IDENTIFIED AND USED ON SEVERAL RECENT LOCAL SURVEYS. FOUND ONE 1999 AUSTIN SWING TIE AND ALL OTHERS DESTROYED. ACCEPTED CORNER AND ESTABLISHED NEW SWING TIES AS SHOWN BELOW.

PLAN - VIEW



I, John M. Tranmer certify that the corner location shown on this record was determined by me or under my direction and control and that this U.S. Public Land Survey Monument Record is correct and complete to the best of my knowledge and belief.

John M. Tranmer 2/20/20
Signature Date

 www.iwengr.com • 800.556.4491		ARCHITECTURE CIVIL ENGINEERING CONSTRUCTION SERVICES ENVIRONMENTAL ENGINEERING LAND SURVEYING MUNICIPAL ENGINEERING STRUCTURAL ENGINEERING TRANSPORTATION ENGINEERING
DRAWN	JJB	FIELD BK. 426
CHECKED	JMT	PROJ. NO. 19734
DATE	2-12-20	SHEET 1 of 1
P:\19\700\734\DRAWINGS\SURVEY\DUPACO CSM\19734 TIE SHEET		

GRANT COUNTY CERTIFIED LAND CORNER

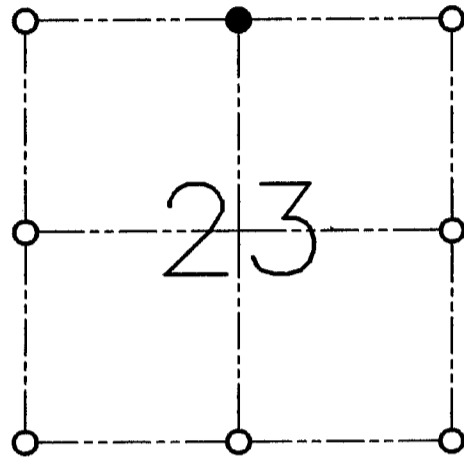
CORNER NO. 64

CERTIFICATE:

I, LARRY L. AUSTIN, DO HEREBY CERTIFY THAT ON FIRST DAY OF MAY, 1999, I FOUND MONUMENTED EVIDENCE OF THE NORTH 1/4 CORNER SECTION 23, TOWN 3 NORTH, RANGE 1 WEST, OF THE FOURTH PRINCIPAL MERIDIAN, AND I RE-ESTABLISHED SAID CORNER ACCORDING TO THE WISCONSIN STATUTES AS SHOWN AND DESCRIBED HEREON.

DATED THIS TWENTY-SECOND DAY OF MAY, 1999

Larry L. Austin
LARRY L. AUSTIN S-1903



● = CORNER LOCATION

**NORTH 1/4 OF SECTION 23
T 3 N R 1 W
TOWN OF PLATTEVILLE**

HISTORY OF ORIGINAL CORNER ESTABLISHMENT:

CORNER WAS SET IN 1833 BY ROBERT CLARK. IN 1989 BRUCE BOWDEN TIED AN EXISTING #10 REBAR USED FOR AREA SURVEYS.

DESCRIPTION OF CORNER EVIDENCE FOUND:

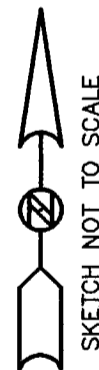
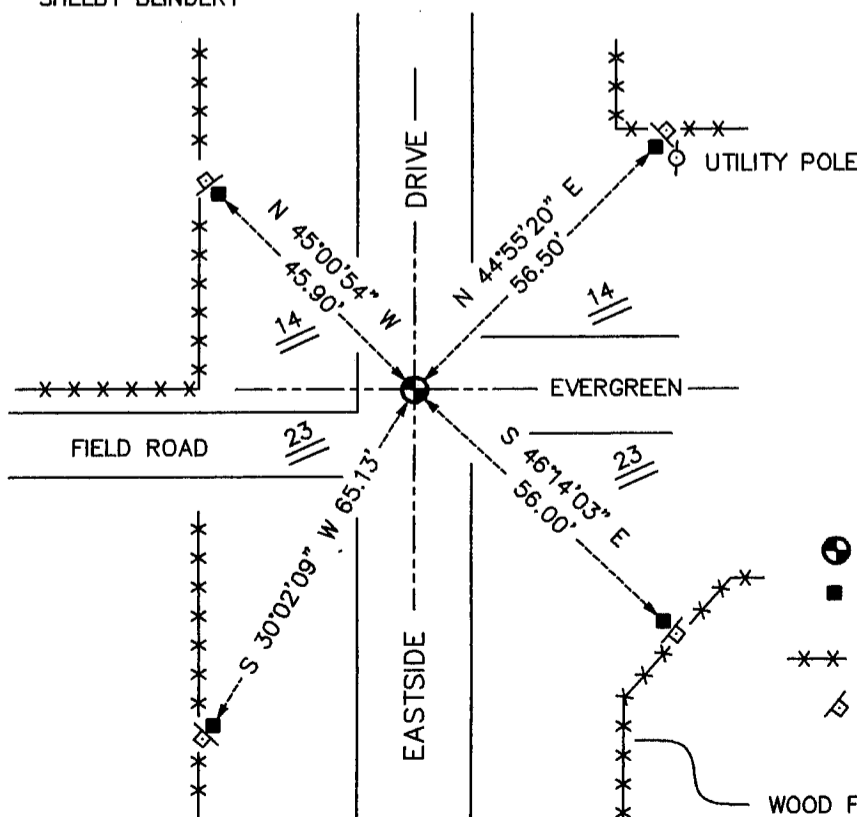
I FOUND THE #10 REBAR AND ACCEPTED IT'S LOCATION AFTER AN E.D.M. AND G.P.S. TRAVERSE OF THE AREA.

DESCRIPTION OF CORNER AND WITNESS MONUMENTS, REFERENCES AND ACCESSORIES USED TO PERPETUATE THE ORIGINAL OR RE-ESTABLISHED LOCATION OF THIS CORNER:

WITNESS TO THE CORNER LOCATION:

BOBBY SEDGWICK
SHELBY BLINDERT

SKETCH:



LEGEND

- NO. 10 REBAR FOUND
- NO. 4 X 24" REBAR SET WITH RED PLASTIC CAP
- ✕✕ EXISTING FENCE
- ⚡ "D.O.T. SURVEY MARKER NEARBY" NEARBY SIGN SET

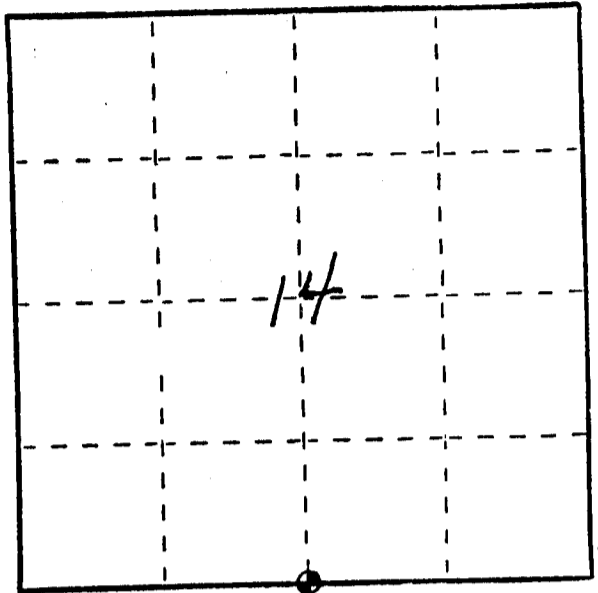
U. S. PUBLIC LAND SURVEY MONUMENT RECORD

INSTRUCTIONS: This record shall show the location of the corner and shall include all of the following nine elements (a through i).

(a) Identify the corner by reference to the U.S. public land survey system.

○ = Corner monument restored.

**SOUTH 1/4 CORNER OF SECTION 14,
TOWN 3 NORTH, RANGE 1 WEST,
PLATTEVILLE TOWNSHIP,
GRANT COUNTY, WISC.**



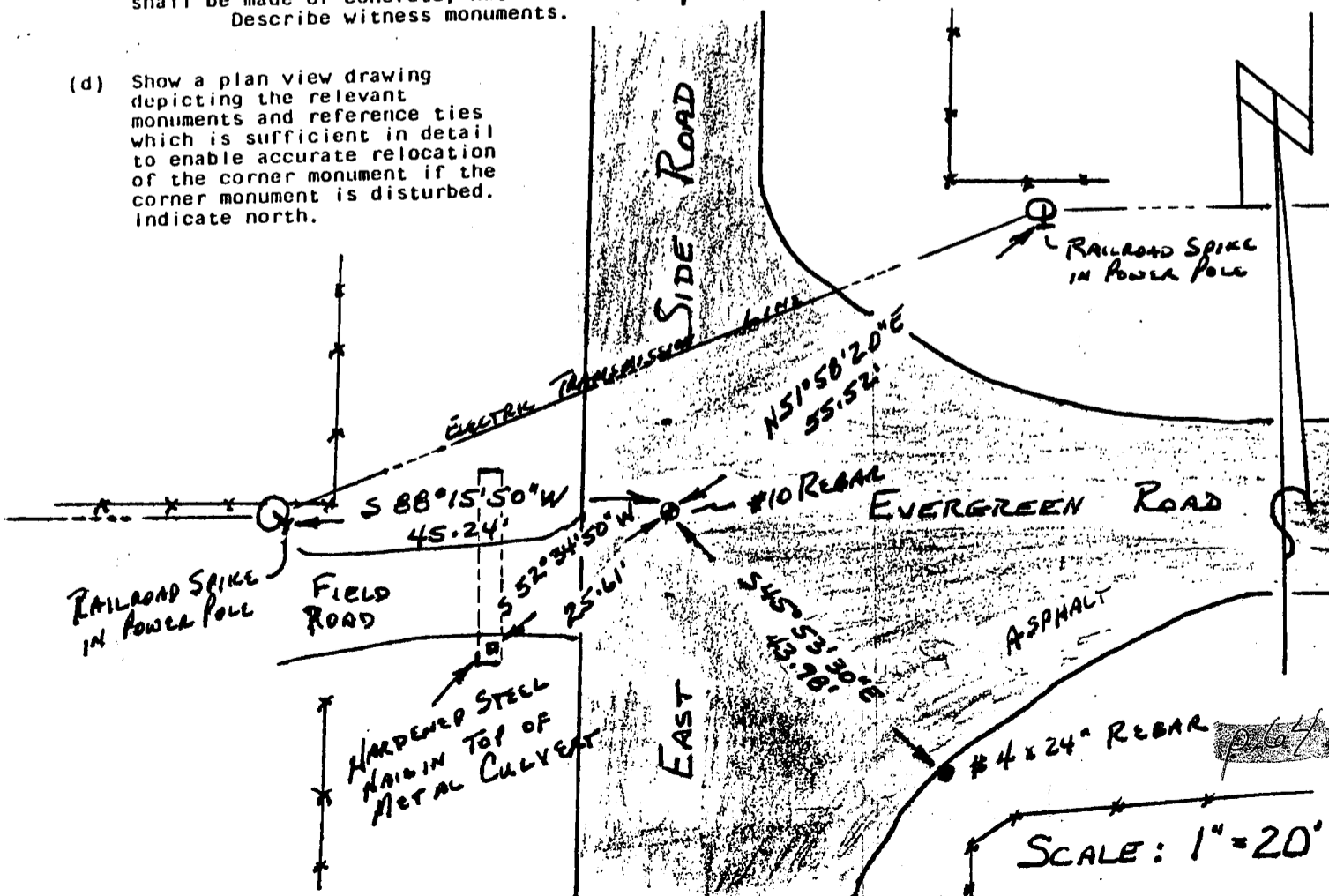
JUN 2 1989

(b) Describe any record evidence, monument evidence, occupational evidence, testimonial evidence or any other material evidence you considered, and whether the monument was found or placed.

MONUMENT FOUND AND ACCEPTED AS SHOWN ON VARIOUS SURVEYS. LOCATION VERIFIED BY PROPORTIONATE MEASUREMENTS FROM AN EDM TRAVERSE OF THE AREA.

(c) In the plan view drawing below, provide reference ties to at least 4 witness monuments, or, if the location is within a municipality, to at least 2 witness monuments. (Witness monuments shall be made of concrete, natural stone, iron or other equally durable material.) Describe witness monuments.

(d) Show a plan view drawing depicting the relevant monuments and reference ties which is sufficient in detail to enable accurate relocation of the corner monument if the corner monument is disturbed. Indicate north.



(e) Describe any material discrepancy between the location of the corner as restored or reestablished and the location of that corner as previously restored or reestablished by distance and direction. Show the discrepancy on the plan view drawing under (d), above. Show the distances between the corner as previously restored or reestablished and (1) the corner as restored or reestablished, and (2) to at least 2 of the witness monuments shown on the drawing in (d), above.

NONE.

(f) Was the corner restored through acceptance of (1) an obliterated evidence location, or, (2) a found perpetuated location?

(2) A FOUND PERPETUATED LOCATION.

(g&h) Was the corner reestablished through lost corner proportionate methods? If so, show the method, including the directions and distances to other public land survey corners used as evidence or used for proportioning in determining the corner location?

No.

(i) I, BRUCE D. BOWDEN
(type or print name) certify that the corner location shown on this record was determined by me or under my direction and control and that this U.S. Public Land Survey Monument Record is correct and complete to the best of my knowledge and belief.

Bruce D. Bowden
Signature

JUNE 1, 1989
Date

