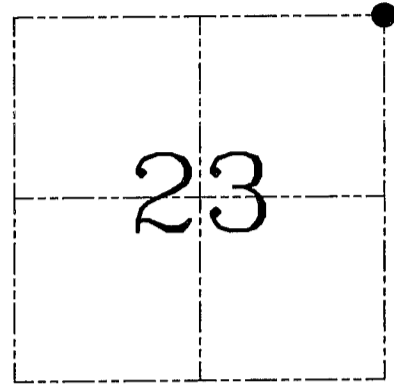
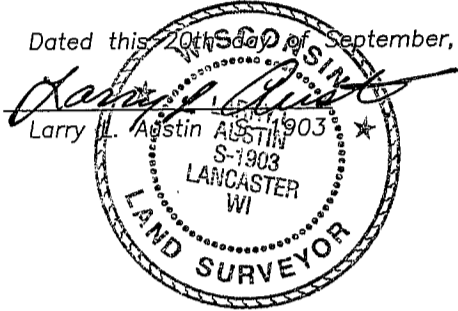


U.S. PUBLIC LAND SURVEY MONUMENT RECORD – GRANT COUNTY, WI
Section 23, Town 3 North Range 1 West, Town of Platteville

CERTIFICATE

I, Larry L. Austin, do hereby certify that the corner location on this record was determined by me and/or under my direct supervision and that this U.S. public land survey monument record is correct and complete to the best of my knowledge and belief.

Dated this 20th day of September, 2004



● = CORNER LOCATION

HISTORY OF CORNER ESTABLISHMENT

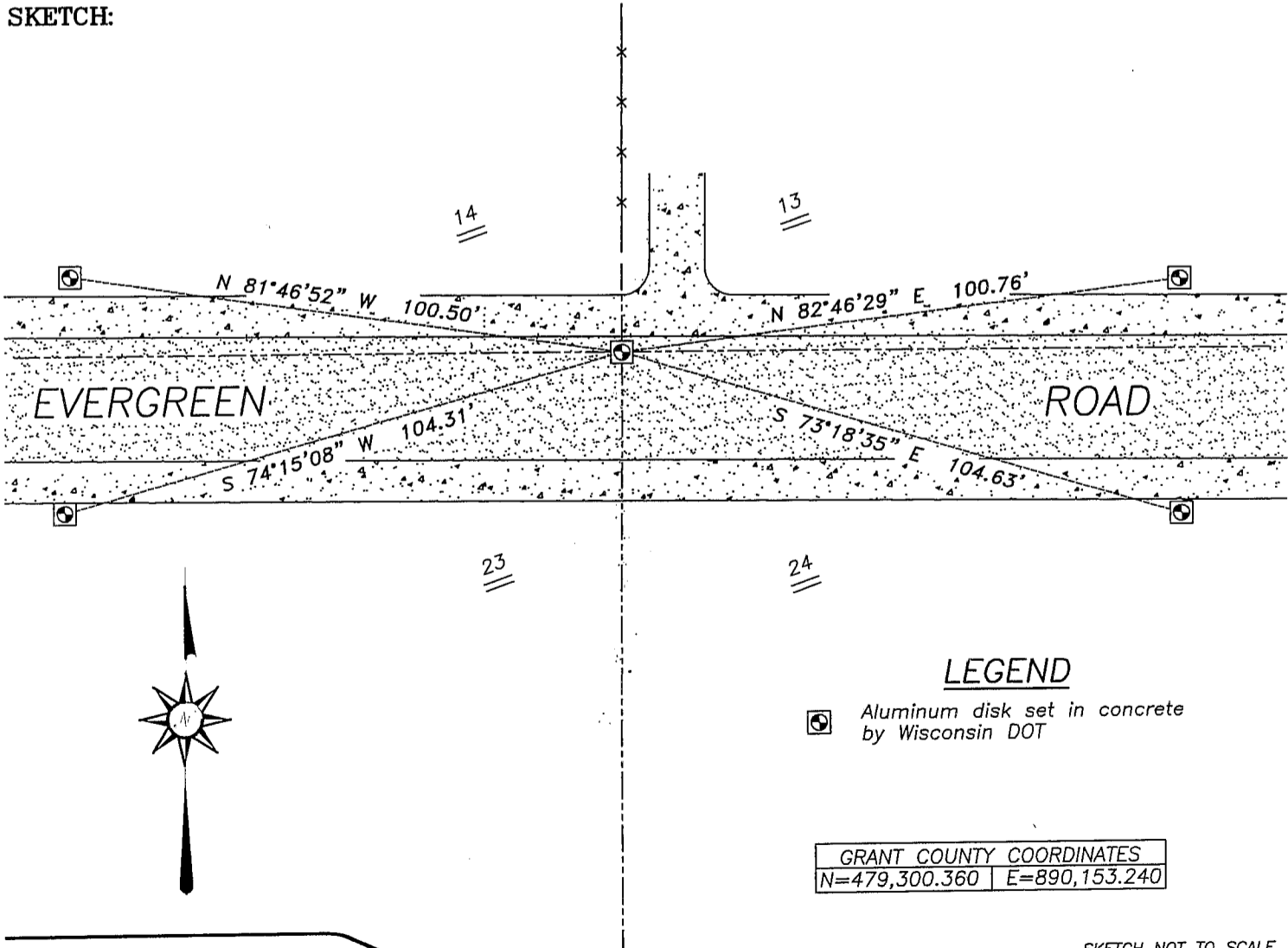
Corner was previously set and tied by myself prior to highway construction.

DESCRIPTION OF CORNER EVIDENCE FOUND

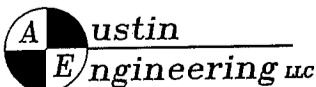
Due to highway construction, the corner and ties were lost. I reset and retied the corner as shown below.

DESCRIPTION OF CORNER AND WITNESS MONUMENTS, references and accessories used to perpetuate the original or re-established location of this corner. Witnesses to corner location Bobby Sedgwick & Shelby Blindert

SKETCH:



SKETCH NOT TO SCALE



4211 HWY 81 E, LANCASTER, WI 53813
 PHONE 608-723-6363 FAX 608-723-6702

JOB NUMBER 04S163
 FIELDBOOK: TSDR, 2412
 G:\T3NR1W\29DOT
 H:\TIE\T3NR1W\63

DRAWN BY: SW AUSTIN
 APPROVED: LL AUSTIN

GRANT COUNTY CERTIFIED LAND CORNER

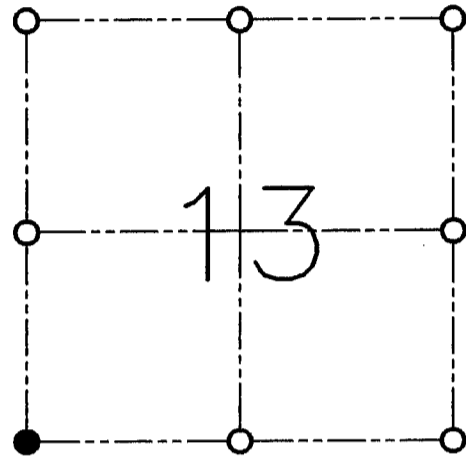
CORNER NO. 63

CERTIFICATE:

I, LARRY L. AUSTIN, DO HEREBY CERTIFY THAT ON FIRST DAY OF MAY, 1999, I FOUND MONUMENTED EVIDENCE OF THE SOUTHWEST CORNER SECTION 13, TOWN 3 NORTH, RANGE 1 WEST, OF THE FOURTH PRINCIPAL MERIDIAN, AND I RE-ESTABLISHED SAID CORNER ACCORDING TO THE WISCONSIN STATUTES AS SHOWN AND DESCRIBED HEREON.

DATED THIS TWENTY-SECOND DAY OF MAY, 1999

Larry L. Austin
LARRY L. AUSTIN S-1903



● = CORNER LOCATION

**SOUTHWEST CORNER
SECTION 13, T 3 N R 1 W
TOWN OF PLATTEVILLE**

HISTORY OF ORIGINAL CORNER ESTABLISHMENT:

CORNER WAS SET IN 1833 BY ROBERT CLARK. IN 1989 BRUCE BOWDEN TIED OUT AN EXISTING NUMBER 10 REBAR.

DESCRIPTION OF CORNER EVIDENCE FOUND:

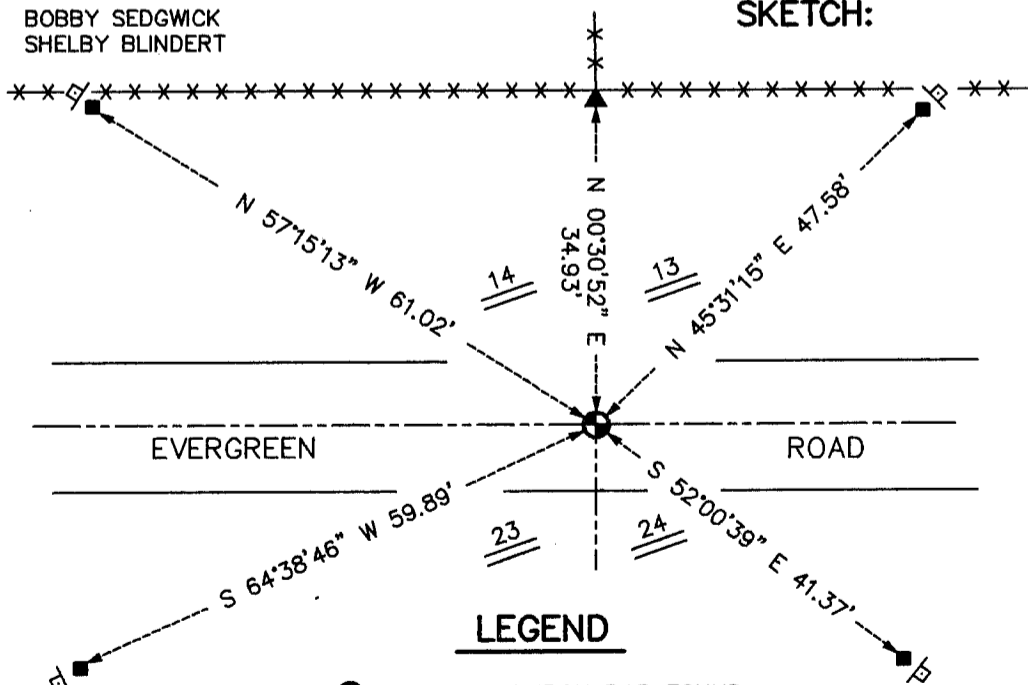
I FOUND THE # 10 REBAR IN PLACE. THE TIES WERE LOST EXCEPT FOR THE MASONRY NAIL. I ACCEPTED THE BAR LOCATION AFTER AN E.D.M. AND G.P.S. TRAVERSE OF THE AREA.

DESCRIPTION OF CORNER AND WITNESS MONUMENTS, REFERENCES AND ACCESSORIES USED TO PERPETUATE THE ORIGINAL OR RE-ESTABLISHED LOCATION OF THIS CORNER:

WITNESS TO THE CORNER LOCATION:

BOBBY SEDGWICK
SHELBY BLINDERT

SKETCH:



LEGEND

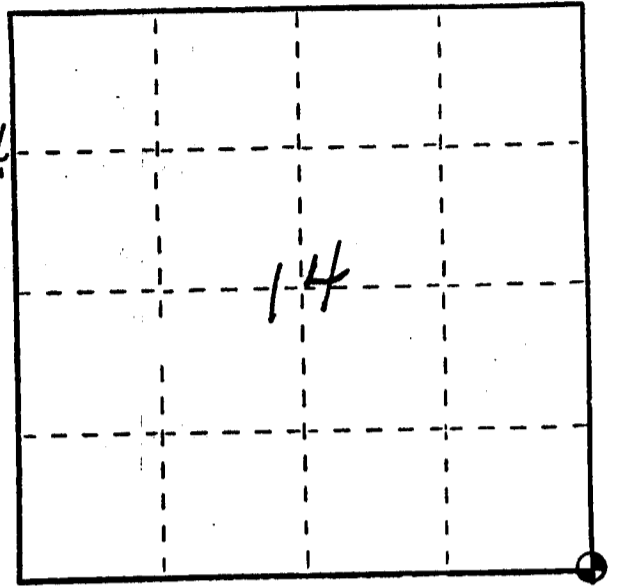
- NUMBER 10 IRON BAR FOUND
- NO. 4 X 24" REBAR SET WITH RED PLASTIC CAP & SIGN
- ◇ "D.O.T. SURVEY MARKER NEARBY" SIGN SET
- ▲ MASONRY NAIL (OLD TIE) FOUND

U. S. PUBLIC LAND SURVEY MONUMENT RECORD

INSTRUCTIONS: This record shall show the location of the corner and shall include all of the following nine elements (a through i).

- (a) Identify the corner by reference to the U.S. public land survey system.
 O = Corner monument restored.

SOUTHEAST CORNER OF SECTION 14,
 TOWN 3 NORTH, RANGE 1 WEST,
 PLATTEVILLE TOWNSHIP,
 GRANT COUNTY, WISC.



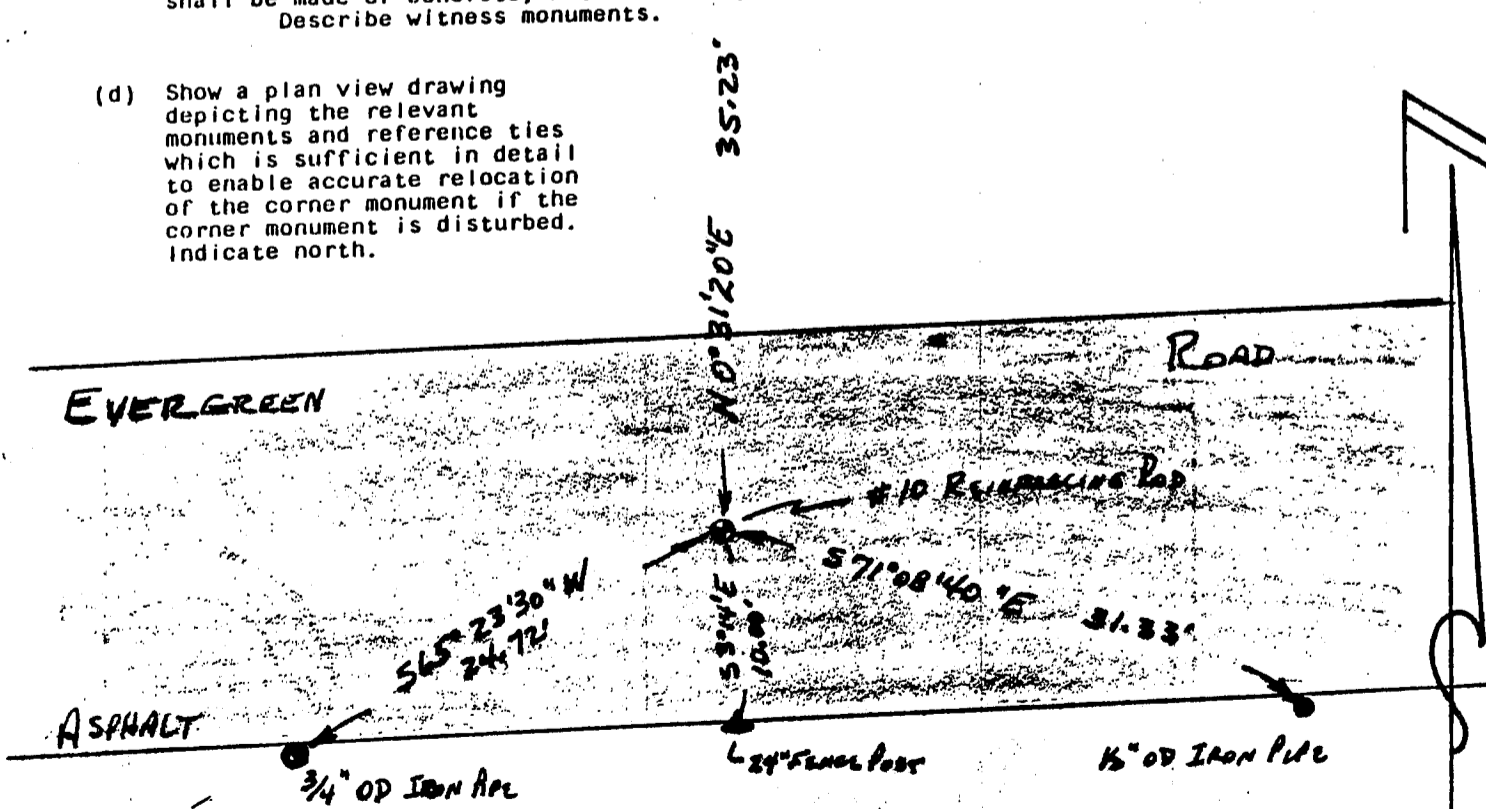
JUN 2 1989

- (b) Describe any record evidence, monument evidence, occupational evidence, testimonial evidence or any other material evidence you considered, and whether the monument was found or placed.

MONUMENT FOUND AND ACCEPTED AS SHOWN ON
 VARIOUS SURVEYS. LOCATION VERIFIED BY
 PROPORTIONATE MEASUREMENTS FROM AN EDM
 TRAVERSE OF THE AREA.

- (c) In the plan view drawing below, provide reference ties to at least 4 witness monuments, or, if the location is within a municipality, to at least 2 witness monuments. (Witness monuments shall be made of concrete, natural stone, iron or other equally durable material.) Describe witness monuments.

- (d) Show a plan view drawing depicting the relevant monuments and reference ties which is sufficient in detail to enable accurate relocation of the corner monument if the corner monument is disturbed. Indicate north.



• denotes # x 24" REBAR

SCALE: 1" = 10'

163

(e) Describe any material discrepancy between the location of the corner as restored or reestablished and the location of that corner as previously restored or reestablished by distance and direction. Show the discrepancy on the plan. See drawing under (d), above. Show the distances between the corner as previously restored or reestablished and (1) the corner as restored or reestablished, and (2) to at least 2 of the witness monuments shown on the drawing in (d), above.

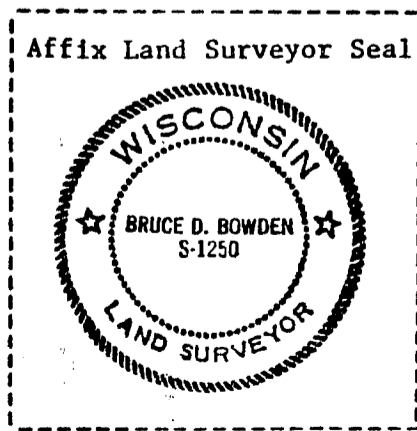
NONE.

(f) Was the corner restored through acceptance of (1) an obliterated evidence location, or, (2) a found perpetuated location?

(2) A FOUND PERPETUATED LOCATION.

(g&h) Was the corner reestablished through lost corner proportionate methods? If so, show the method, including the directions and distances to other public land survey corners used as evidence or used for proportioning in determining the corner location?

No.



(i) I, BRUCE D. BOWDEN
(type or print name) certify that the corner location shown on this record was determined by me or under my direction and control and that this U.S. Public Land Survey Monument Record is correct and complete to the best of my knowledge and belief.

Bruce D. Bowden
Signature

JUNE 1, 1989
Date