

U.S. PUBLIC LAND SURVEY MONUMENT RECORD

(AS REQUIRED BY s.A-E 7.08, WI. ADM. CODE)

HISTORY OF ORIGINAL CORNER ESTABLISHMENT AND SUBSEQUENT RESTORATIONS AND DESCRIPTION OF ANY RECORD, MONUMENT, OCCUPATION, TESTIMONIAL OR OTHER EVIDENCE CONSIDERED

THE CORNER WAS PREVIOUSLY SET AND TIE SHEET DATED 6-2-1989 WAS FILED IN GRANT CO. A 1" IRON ROD WAS NOTED AT THE CORNER ON A LAF. CO. SURVEY ESTABLISHED 1999 WITH LAF. CO. THE 1999 COORDINATES ARE 0.68' WEST OF COORDINATES CURRENTLY ESTABLISHED USING BELMONT W. HARN STATION. WE DID NOT FIND RECORD OF WHO SET THE ALUMINUM CAP OR IF CORNER WAS MOVED SLIGHTLY COORDINATES ARE ESTABLISHED TO THE CORNER AND WITNESS TIES AS SHOWN BELOW BEARING REFERENCE AND COORDINATES ARE LAFAYETTE COUNTY COORDINATE SYSTEM NAD 83(91) ENGLISH SYSTEM

LAFAYETTE COUNTY COORDINATES

NORTHING 182978.97 (182978.91)
EASTING 400192.18 (400192.87)

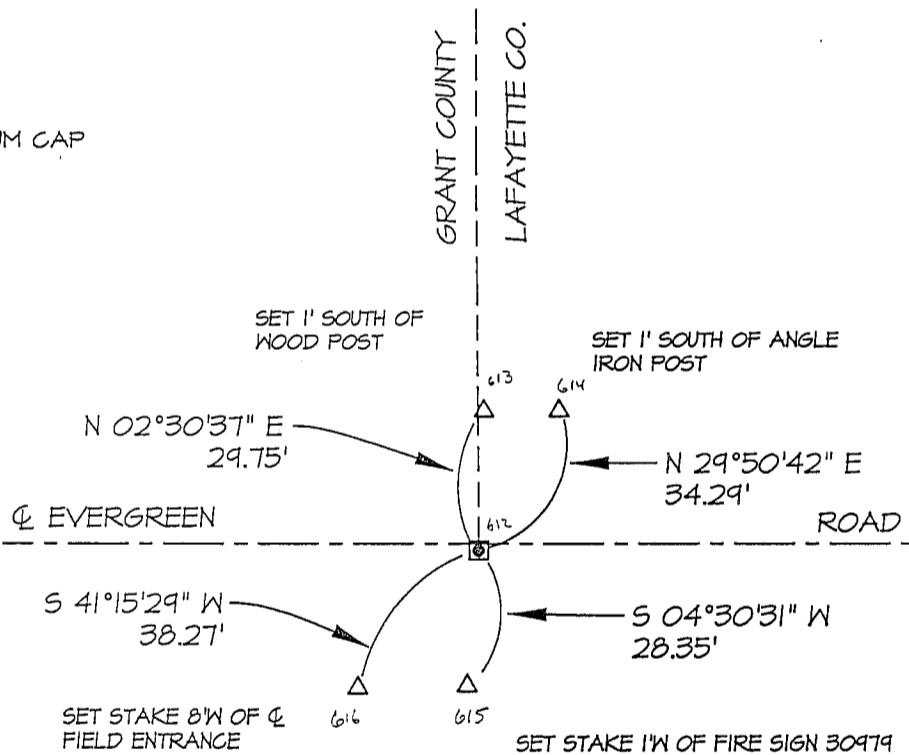
CORNER WAS: (CHECK ALL THAT APPLY)

- RESTORED THROUGH ACCEPTANCE OF AN OBLITERATED EVIDENCE LOCATION
- RESTORED THROUGH ACCEPTANCE OF A FOUND PERPETUATED LOCATION
(INCLUDE A PLAN VIEW DRAWING SHOWING BEARING & DISTANCE TO OTHER PUBLIC LAND SURVEY CORNERS USED FOR PROPORTIONING AND DETERMINING THE CORNER LOCATION)
- RESTORED OR REESTABLISHED IN A LOCATION THAT DIFFERS FROM A PREVIOUS RESTORATION OR REESTABLISHMENT
(INCLUDE A PLAN VIEW DRAWING AND INDICATE WHAT WAS SET AND/OR FOUND)

Describe the monument and accessories used to perpetuate the location of the corner. (include a plan view drawing and indicated what was set and/or found)

LEGEND:

- △ SET 5/8"φ REBAR TIE
- FOUND STONE MONUMENT
- ⊗ FOUND REBAR WITH LAF. CO. ALUM CAP
- ◼ FOUND ALUMINUM CAP ON REBAR
- () RECORDED AS
- ⊗ FOUND "PK" NAIL
- x—x— FENCE
- ▲ FOUND 1" IRON PIPE



SECT 13	SECT 18
TOWN 3 N	TOWN 3 N
RANGE 1W	RANGE 1E
●	
SECT 24	SECT 19
TOWN 3 N	TOWN 3 N
RANGE 1W	RANGE 1E

SCALE: 1" = 40'

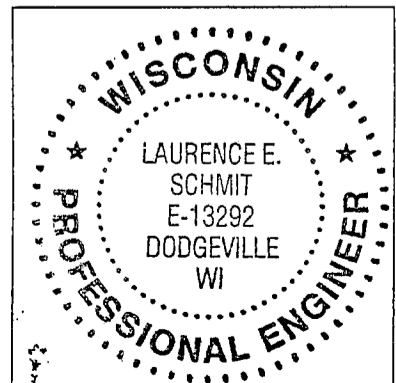
- = LOCATION OF CORNER
- THE SE COR. OF SECT 13 T 3 N, R 1W
- THE NW COR. OF SECT 19 T 3 N, R 1E
- THE NW COR. OF SECT 19 T 3 N, R 1E
- THE NE COR. OF SECT 24 T 3 N, R 1W

LAFAYETTE & GRANT COUNTY, WISCONSIN
JOB ID: 075-006 BOOK #: 2007-2 P.13

I, LAURENCE E SCHMIT CERTIFY THAT THE CORNER LOCATION SHOWN ON THIS RECORD WAS DETERMINED BY ME OR UNDER MY DIRECTION AND CONTROL AND THAT THIS U.S. PUBLIC LAND SURVEY MONUMENT RECORD IS CORRECT AND COMPLETE TO THE BEST OF MY KNOWLEDGE AND BELIEF.

Laurence E Schmit 5-8-07

SIGNATURE _____ DATE: _____



LAND SURVEYORS SEAL
INDEX NUMBER 73

U. S. PUBLIC LAND SURVEY MONUMENT RECORD

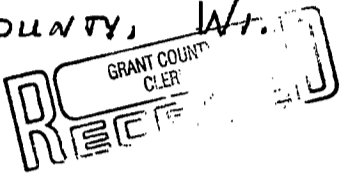
INSTRUCTIONS:

This record shall show the location of the corner and shall include all of the following nine elements (a through i).

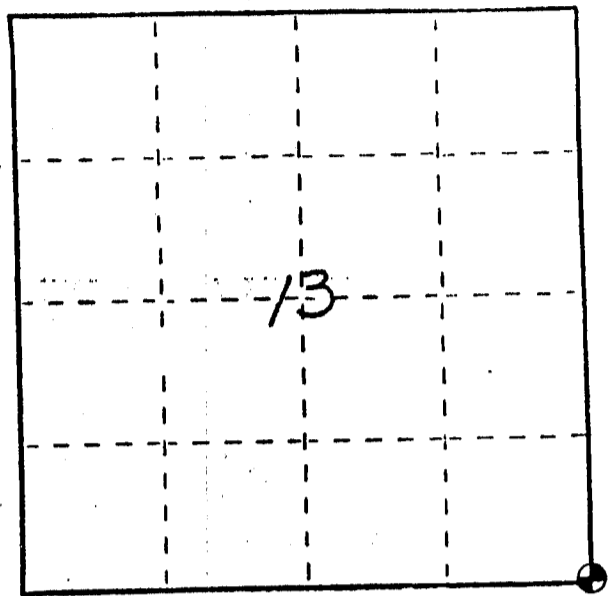
- (a) Identify the corner by reference to the U.S. public land survey system.

○ = Corner monument restored.

SOUTHEAST CORNER OF SECTION 13,
TOWN 3 NORTH, RANGE 1 WEST,
PLATTEVILLE TWP., GRANT
COUNTY, WY.



JUN 2 1989

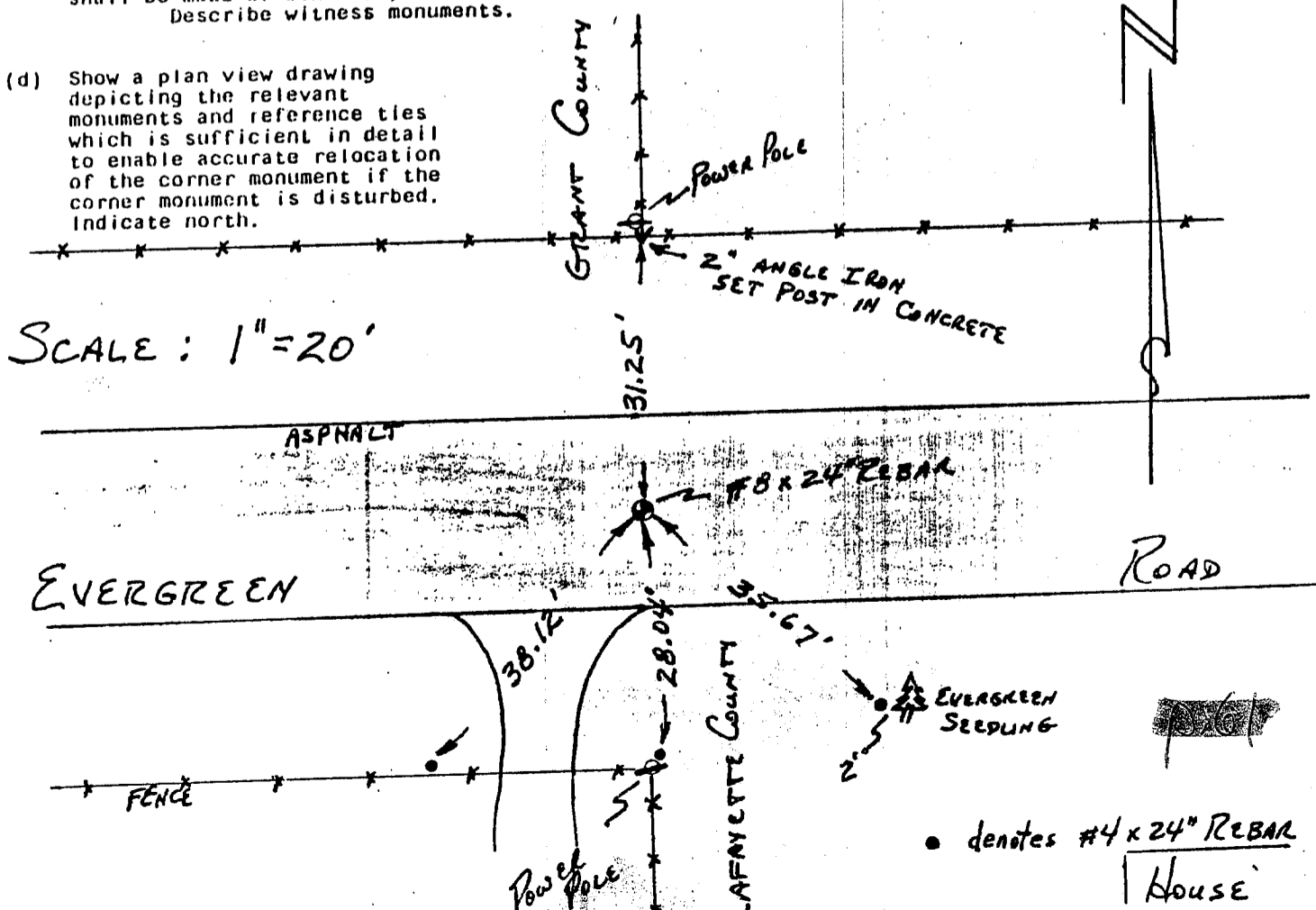


- (b) Describe any record evidence, monument evidence, occupational evidence, testimonial evidence or any other material evidence you considered, and whether the monument was found or placed.

MONUMENT SET FROM EXISTING PHYSICAL EVIDENCE OF ROADS AND FENCES AFTER VERIFICATION BY PROPORTIONATE MEASUREMENTS FROM AN EDM TRAVERSE OF THE AREA.

- (c) In the plan view drawing below, provide reference ties to at least 4 witness monuments, or, if the location is within a municipality, to at least 2 witness monuments. (Witness monuments shall be made of concrete, natural stone, iron or other equally durable material.) Describe witness monuments.

- (d) Show a plan view drawing depicting the relevant monuments and reference ties which is sufficient in detail to enable accurate relocation of the corner monument if the corner monument is disturbed. Indicate north.



(e) Describe any material discrepancy between the location of the corner as restored or reestablished and the location of that corner as previously restored or reestablished by distance and direction. Show the discrepancy on the plan view drawing under (d), above. Show the distances between the corner as previously restored or reestablished and (1) the corner as restored or reestablished, and (2) to at least 2 of the witness monuments shown on the drawing in (d), above.

NONE.

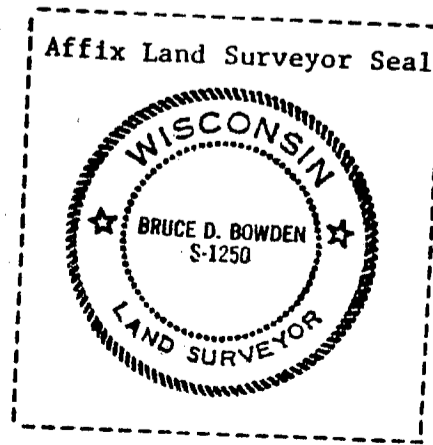
(f) Was the corner restored through acceptance of (1) an obliterated evidence location, or, (2) a found perpetuated location?

(2) A FOUND PERPETUATED LOCATION.

(g&h) Was the corner reestablished through lost corner proportionate methods? If so, show the method, including the directions and distances to other public land survey corners used as evidence or used for proportioning in determining the corner location?

No.

SE 1/3



(i) I, BRUCE D. BOWDEN
(type or print name) certify that the corner location shown on this record was determined by me or under my direction and control and that this U.S. Public Land Survey Monument Record is correct and complete to the best of my knowledge and belief.

Bruce D Bowden Signature JUNE 1, 1989 Date