

U.S. PUBLIC LAND SURVEY MONUMENT RECORD

(AS REQUIRED BY s.A-E 7.08, WI. ADM. CODE)

HISTORY OF ORIGINAL CORNER ESTABLISHMENT AND SUBSEQUENT RESTORATIONS AND DESCRIPTION OF ANY RECORD, MONUMENT, OCCUPATION, TESTIMONIAL OR OTHER EVIDENCE CONSIDERED

THE CORNER WAS PREVIOUSLY SET AND TIE SHEET DATED 6-2-1989 WAS FILED IN GRANT CO.
 THE TUBE PORTION OF ALUM. MON. WAS NOTED ON A LAF. CO. SURVEY BY LAROSA DATED 1999 WITH COORDS.
 THE 1999 COORDINATES ARE 0.67' SE OF COORDINATES CURRENTLY ESTABLISHED USING BELMONT W. HARN
 STATION. WE DID NOT FIND RECORD OF WHO SET THE ALUMINUM CAP OR IF CORNER WAS MOVED SLIGHTLY
 COORDINATES ARE ESTABLISHED TO THE CORNER AND WITNESS TIES AS SHOWN BELOW
 BEARING REFERENCE AND COORDINATES ARE LAFAYETTE COUNTY COORDINATE SYSTEM
 NAD 83(91) ENGLISH SYSTEM

LAFAYETTE COUNTY COORDINATES

NORTHING 185632.24 (185631.94)
 EASTING 400194.94 (400195.55)

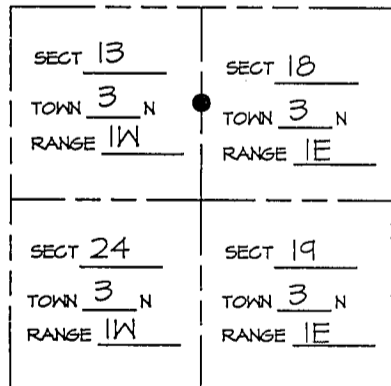
CORNER WAS: (CHECK ALL THAT APPLY)

- RESTORED THROUGH ACCEPTANCE OF AN OBLITERATED EVIDENCE LOCATION
- RESTORED THROUGH ACCEPTANCE OF A FOUND PERPETUATED LOCATION
 CONSIDERED A LOST CORNER AND REESTABLISHED THROUGH LOST CORNER PROPORTIONATE METHODS
 (INCLUDE A PLAN VIEW DRAWING SHOWING BEARING & DISTANCE TO OTHER PUBLIC LAND SURVEY CORNERS
 USED FOR PROPORTIONING AND DETERMINING THE CORNER LOCATION)
- RESTORED OR REESTABLISHED IN A LOCATION THAT DIFFERS FROM A PREVIOUS RESTORATION OR REESTABLISHMENT
 (INCLUDE A PLAN VIEW DRAWING AND INDICATE WHAT WAS SET AND/OR FOUND)

Describe the monument and accessories used to perpetuate the location of the corner. (include a plan view drawing and indicated what was set and/or found)

LEGEND:

- SET 5/8" ϕ REBAR TIE
- FOUND STONE MONUMENT
- FOUND REBAR WITH LAF. CO. ALUM CAP
- FOUND GRANT CO. ALUMINUM CAP ON REBAR
- () RECORDED AS
- FOUND "PK" NAIL
- x—x— FENCE
- FOUND 3/8" ϕ REBAR



● = LOCATION OF CORNER

THE E1/4 COR. OF SECT 13 T 3 N, R 1W

THE W1/4 COR. OF SECT 18 T 3 N, R 1E

THE ___ COR. OF SECT 19 T 3 N, R 1E

THE ___ COR. OF SECT 24 T 1 N, R 1W

LAFAYETTE & GRANT COUNTY, WISCONSIN

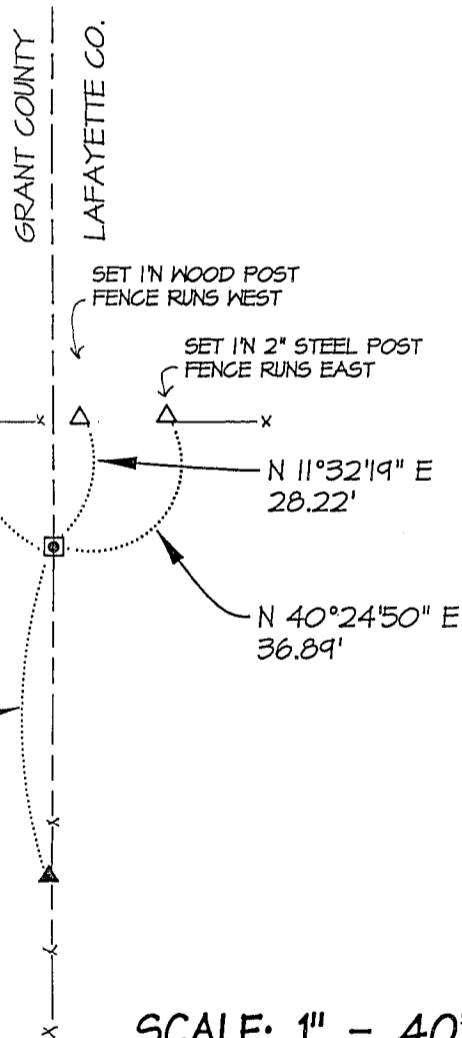
JOB ID: 075-006 BOOK #: 2007-2 P.12

I, LAURENCE E SCHMIT CERTIFY THAT THE CORNER LOCATION SHOWN ON THIS
 LAURENCE E SCHMIT BY ME OR UNDER MY DIRECTION AND CONTROL
 AND THAT THIS U.S. PUBLIC LAND SURVEY MONUMENT RECORD IS CORRECT
 AND COMPLETE TO THE BEST OF MY KNOWLEDGE AND BELIEF.

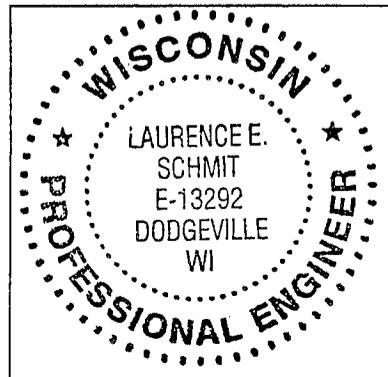
Laurence E Schmit 5-8-07

SIGNATURE

DATE:



SCALE: 1" = 40'



LAND SURVEYORS SEAL

INDEX NUMBER 54

U. S. PUBLIC LAND SURVEY MONUMENT RECORD

INSTRUCTIONS: This record shall show the location of the corner and shall include all of the following nine elements (a through i).

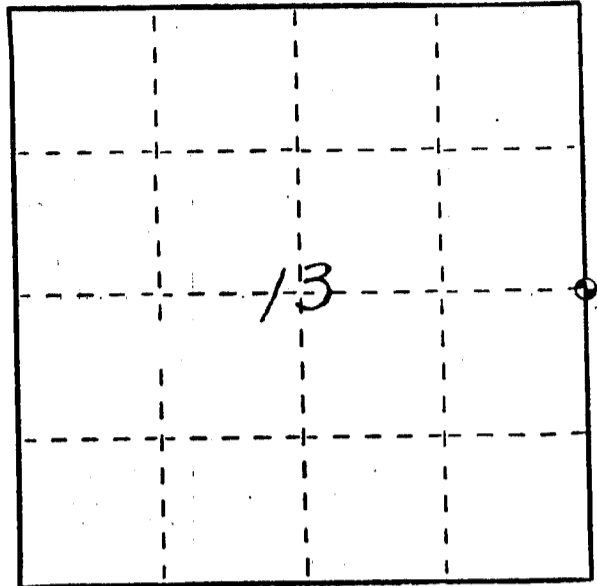
(a) Identify the corner by reference to the U.S. public land survey system.

⊕ = Corner monument restored.

East $\frac{1}{4}$ corner of Section 13,
Town 3 North, Range 1 East,
Platteville Township, Grant
County, Wisconsin.

GRANT COUNTY
CLERK
RECEIVED

JUN 2 1989

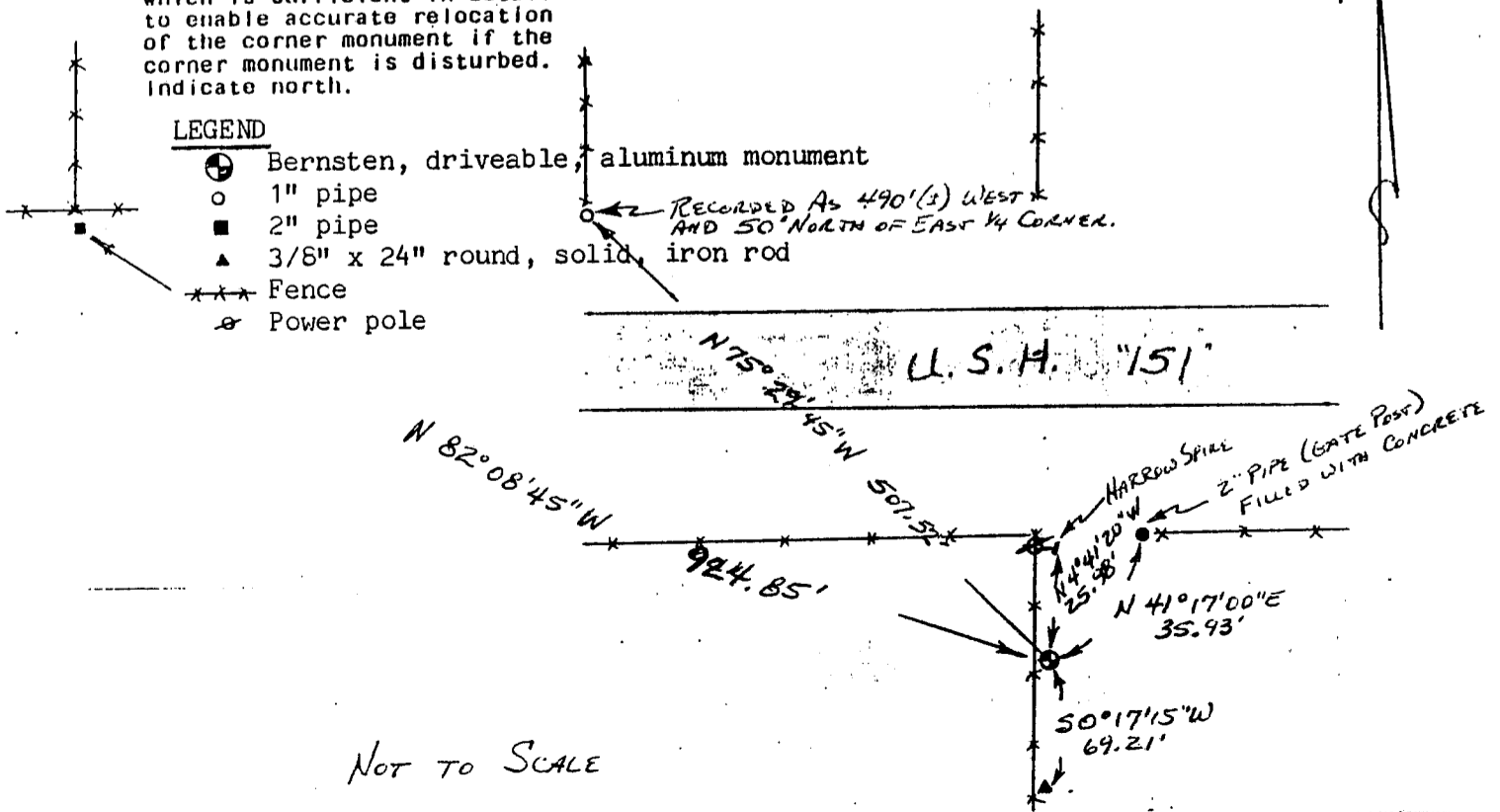


(b) Describe any record evidence, monument evidence, occupational evidence, testimonial evidence or any other material evidence you considered, and whether the monument was found or placed.

Monument set by proportionate measurement along the Fourth Principle Meridian. The state highway plans show that the highway was moved North in its last rebuilding and this location is in agreement with the older highway. Some recorded surveys and descriptions used the center of the existing highway as the East-West $\frac{1}{4}$ section line, but this is in error.

(c) In the plan view drawing below, provide reference ties to at least 4 witness monuments, or, if the location is within a municipality, to at least 2 witness monuments. (Witness monuments shall be made of concrete, natural stone, iron or other equally durable material, ~~except wood.~~) Describe witness monuments.

(d) Show a plan view drawing depicting the relevant monuments and reference ties which is sufficient in detail to enable accurate relocation of the corner monument if the corner monument is disturbed. Indicate north.



(e) Describe any material discrepancy between the location of the corner as restored or reestablished and the location of that corner as previously located or reestablished by distance and direction. Show the discrepancy on the plan view drawing under (d), above. Show the distances between the corner as previously restored or reestablished and (1) the corner as restored or reestablished, and (2) to at least 2 of the witness monuments shown on the drawing in (d), above.

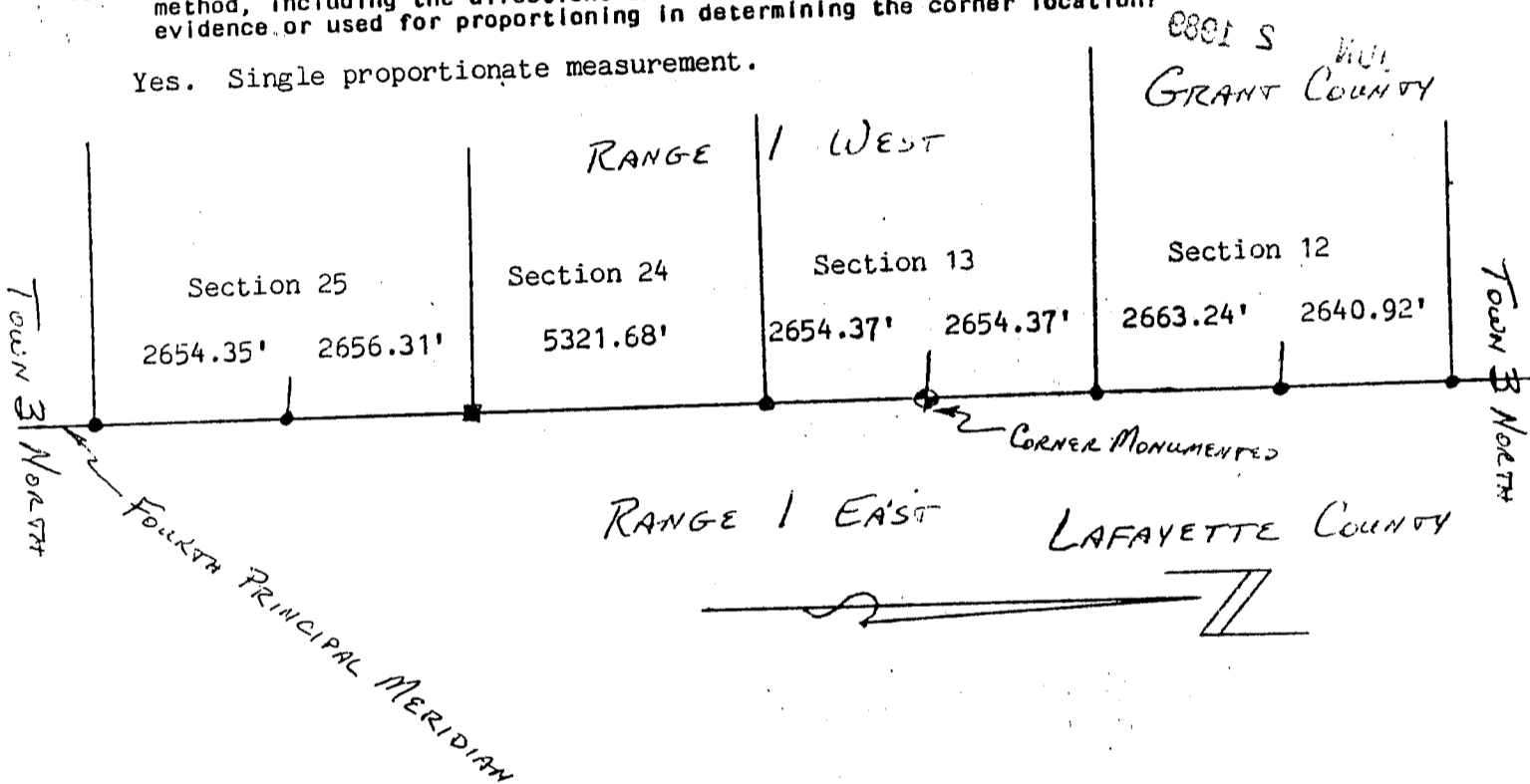
Yes, the previous location assumes the center line of U.S. Highway 151 to be on the 1/4 section line. The highway plans however, show that the existing highway was moved to the North (Division of Highways Job #9483 A&B).

(f) Was the corner restored through acceptance of (1) an obliterated evidence location, or, (2) a found perpetuated location?

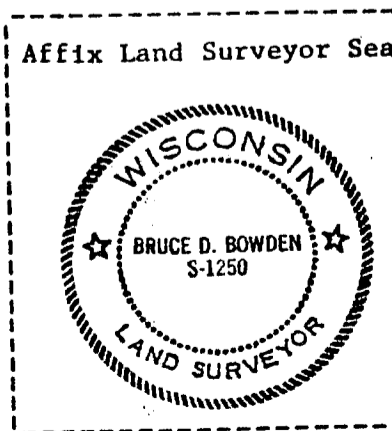
(1) An obliterated evidence location

(g&h) Was the corner reestablished through lost corner proportionate methods? If so, show the method, including the directions and distances to other public land survey corners used as evidence or used for proportioning in determining the corner location?

Yes. Single proportionate measurement.



E-13



(1) I, Bruce D. Bowden, R.L.S. -1250
 (type or print name) certify that the corner location shown on this record was determined by me or under my direction and control and that this U.S. Public Land Survey Monument Record is correct and complete to the best of my knowledge and belief.

Bruce D. Bowden Nov 14, 1988
 Signature Date