

U.S. PUBLIC LAND SURVEY MONUMENT RECORD

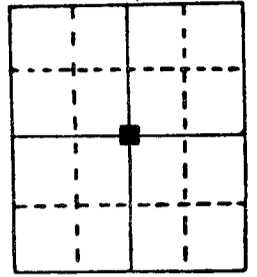
Note: This form is intended and designed to fulfill all requirements of Wisconsin Administrative Code, Chapter A-E 5.02, U.S. Public Land Survey Monument Record (3) (a) (b) (c) (d) (e) (f) (g) (h) (i). An additional sheet may be added if necessary to conform with said requirements.

(a) Corner location: Township 3 North

Range 1 East/West

Town/City/Village Platteville

County Grant

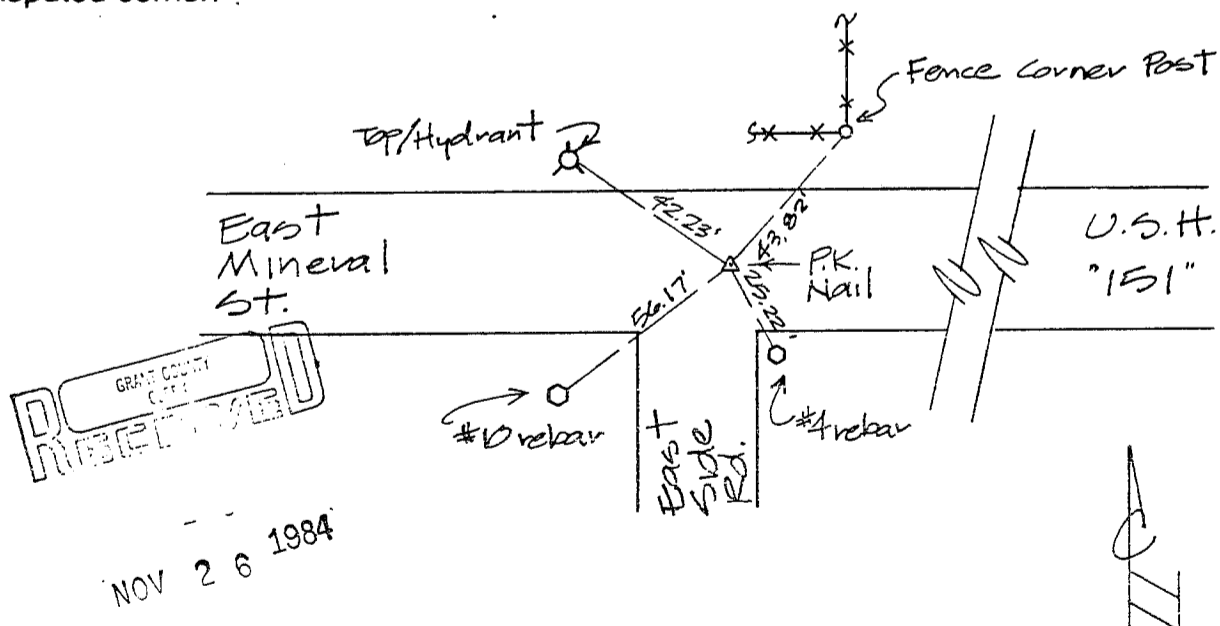


Section 14

(b) (f) (g) (h) Description of monument found at this corner and if it was accepted, state all evidence (material, testimonial, occupational, plats, records, other monuments) used as a basis for accepting. If not accepted or if nothing was found, state evidence used as basis for establishing location. If reestablished through lost corner proportionate methods, indicate all monuments, distances and directions used to establish.

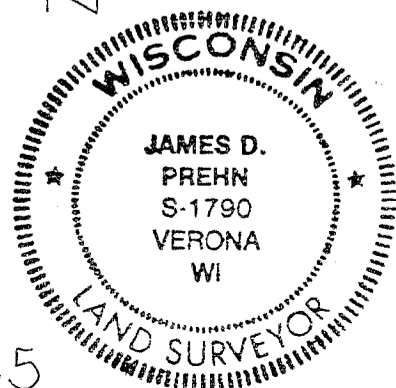
I reestablished center of said section 14 using corner ties provided by John F. Orth, S-340, Platteville, Wis. These corner ties were: 42.23' from top of hydrant and 43.82' from fence corner post. This center of section has been used on numerous surveys in this area and therefore I accepted its location based on common acceptance. Surveys using center of section as described: survey map for Dean H. & Lynn Collins Property, dated Oct. 11, 1979, by John F. Orth; Plat of survey, dated April 4, 1980, by David A. Davis, S-1498, Blue Mounds, Wis.; and Annexation Plat for city of Platteville, dated Sept. 8, 1977, by Carl B. Schoenhard, Jr., S-1298, Galena, Ill.

(c) (d) (e) Plan view of corner with ties to at least 4 witness monuments. If in disagreement with previously established corner, show the distances between the two corners and also indicate the ties to the disputed corner.



(i) I, James D. Prehn, S-1790
 (type or print name) certify that the corner location on this record was determined by me or under my direction and control and that this U.S. Public Land Survey Monument Record is correct and complete to the best of my knowledge and belief.

James D. Prehn Signature 11-19-84 Date



p. 58.5