

U.S. PUBLIC LAND SURVEY MONUMENT RECORD - GRANT COUNTY, WI

Section 15, Town 3 North Range 1 West, Town of Platteville (a)

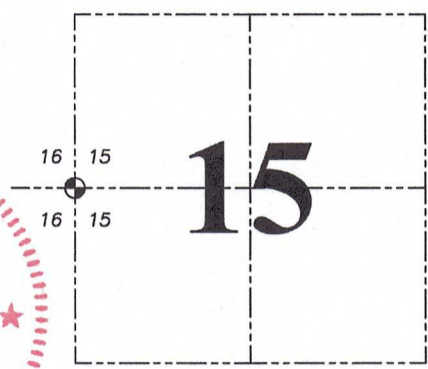
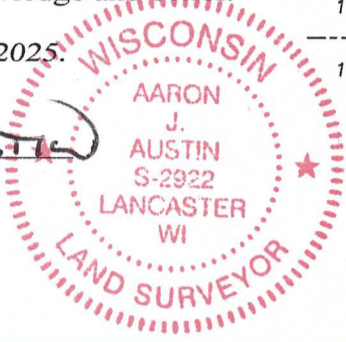
NOTE: This form is intended and designed to fulfill all requirements of the Wisconsin Administrative Code Chapter A-E 7.08, U.S. Public Land Survey Monument Record (3) (a) (b) (c) (d) (e) (f) (g) (h) (i).

CERTIFICATE: (i)

I, Aaron J. Austin, Wisconsin Professional Land Surveyor, do hereby certify that the corner location on this record was determined by me and/or under my direct supervision and that this U.S. Public Land Survey Monument Record is correct and complete to the best of my knowledge and belief.

Dated this 13th day of August, 2025.

*Aaron J. Austin*  
Aaron J. Austin, PLS-2922



⊕ = CORNER LOCATION

Grant County Coordinates:  
NAD 83 (2011)  
Northing: 481,886.94  
Easting: 879,493.57

HISTORY OF CORNER ESTABLISHMENT:

Original corner was set in 1833 by Robert Clark.  
Larry Austin Chisled an X in concrete and prepared a Survey Monument Record dated 8-10-2005.

DESCRIPTION OF CORNER EVIDENCE FOUND: (b) (f) (g) (h)

I found a Chisled X and two witness corners Larry set. I set two additional witness corners and verified the Chisled X's location with G.P.S. and E.D.M. methods.

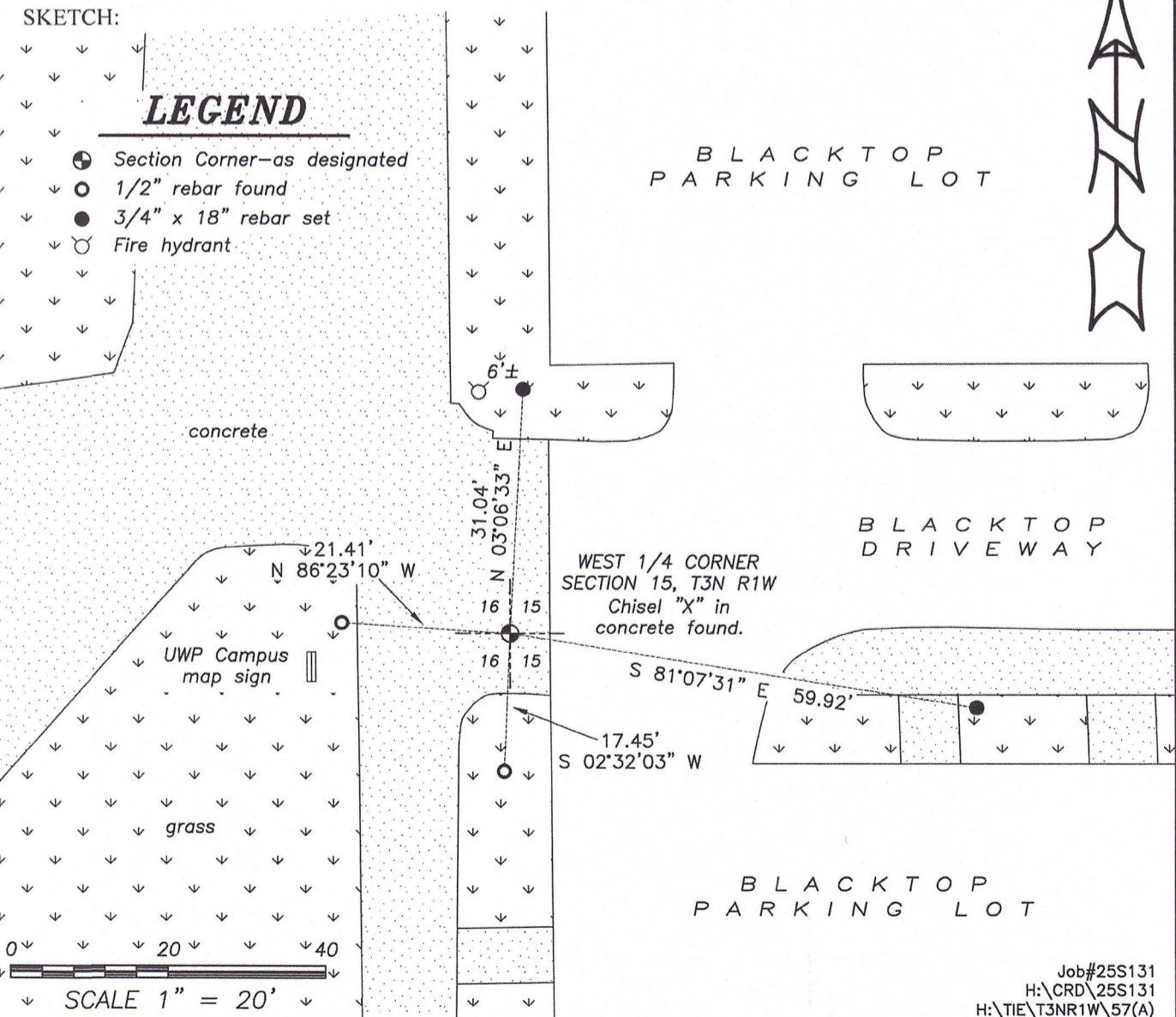
DESCRIPTION OF CORNER AND WITNESS MONUMENTS, references and accessories used to perpetuate the original or re-established location of this corner. (c) (d) (e)

Witnesses to corner location Owen Austin, Tanner Austin.  
Drawn by: Owen Austin.

SKETCH:

LEGEND

- ⊕ Section Corner—as designated
- 1/2" rebar found
- 3/4" x 18" rebar set
- ⊕ Fire hydrant



**U.S. PUBLIC LAND SURVEY MONUMENT RECORD – GRANT COUNTY, WI**

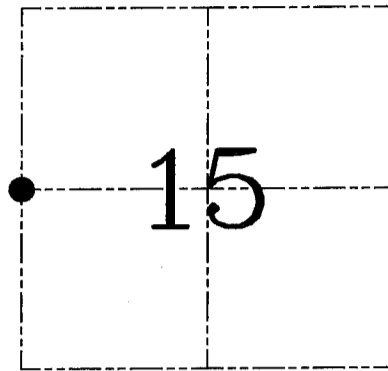
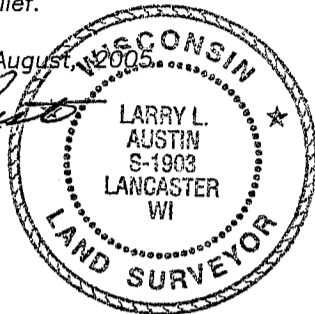
**Section 15, Town 3 North Range 1 West, Town of Platteville**

CERTIFICATE

I, Larry L. Austin, do hereby certify that the corner location on this record was determined by me and/or under my direct supervision and that this U.S. public land survey monument record is correct and complete to the best of my knowledge and belief.

Dated this 10th day of August, 2005.

*Larry L. Austin*  
Larry L. Austin S-1903



● = CORNER LOCATION

HISTORY OF CORNER ESTABLISHMENT

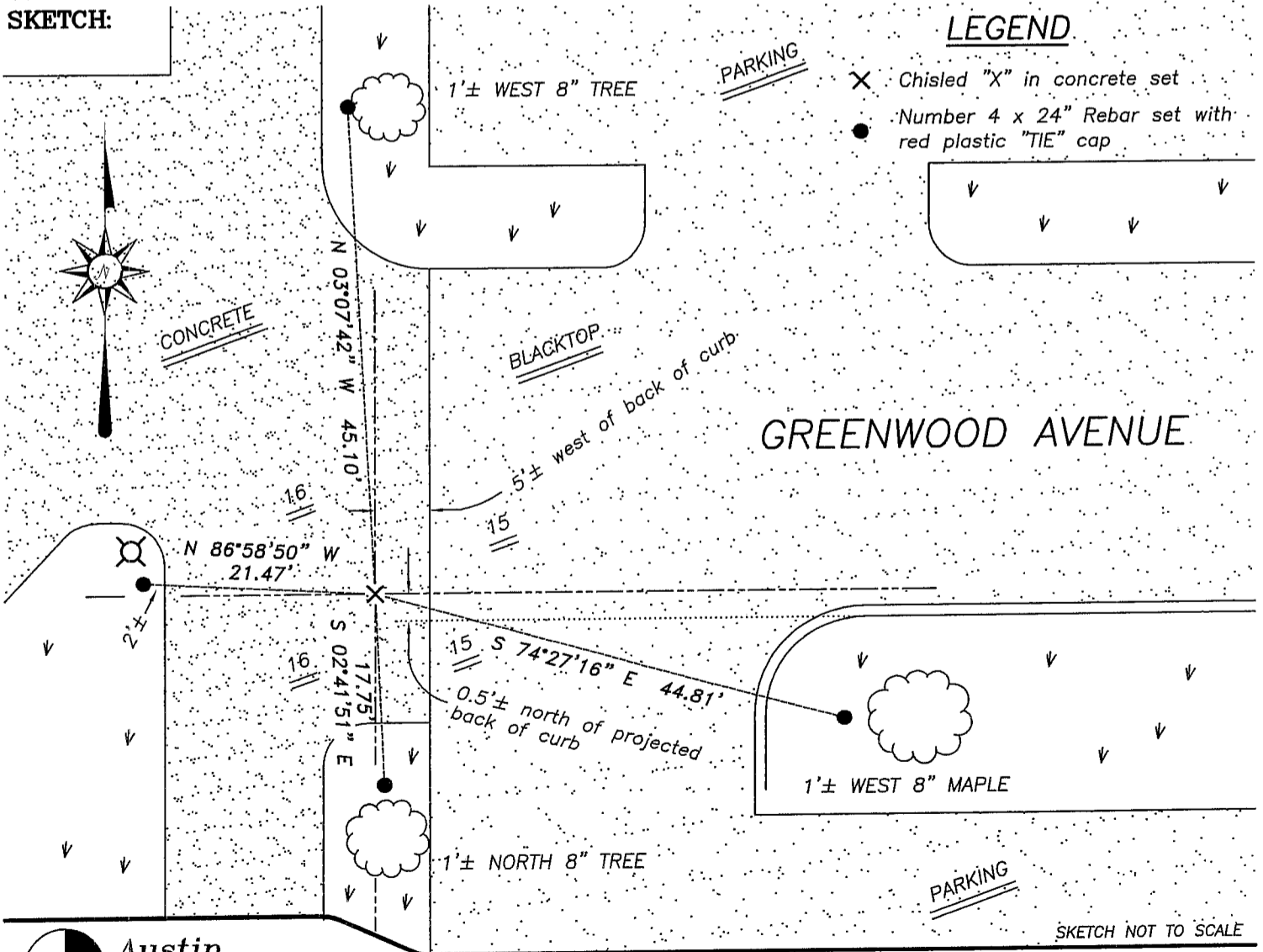
Corner was originally set in 1833 by Clark. Hawleys Addition, Henrys Addition, and Rountrees Western Addition all tied to the West line of Section 15 or West 1/4 corner of Section 15. No recent records of the corner location were found.

DESCRIPTION OF CORNER EVIDENCE FOUND

I used the above previously stated plats to establish Northing. Easting was established between the Northwest Corner and Southwest Corners of Section 15. Verified this location using EDM & GPS methods.

DESCRIPTION OF CORNER AND WITNESS MONUMENTS, references and accessories used to perpetuate the original or re-established location of this corner. Witnesses to corner location Bobby Sedgwick & Brad Digman & Shane Austin

**SKETCH:**



LEGEND

- X Chisled "X" in concrete set
- Number 4 x 24" Rebar set with red plastic "TIE" cap



**Austin Engineering LLC**

4211 HWY 81 E, LANCASTER, WI 53813  
PHONE 608-723-6363 FAX 608-723-6702

JOB NUMBER 05S050  
FIELDBOOK: TDSR, 2512  
G:\GRANTDOT\T3NR1W  
H:\TIE\T3NR1W\57

DRAWN BY: SW AUSTIN  
APPROVED: LL AUSTIN