

GRANT COUNTY CERTIFIED LAND CORNER

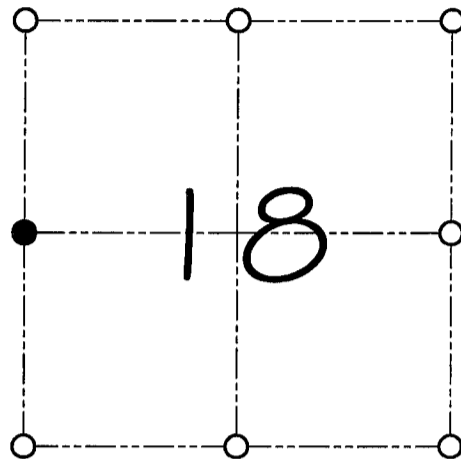
CORNER NUMBER 54

CERTIFICATE:

I, Larry L. Austin, do hereby certify that on the 16th day of March, 2000, I found no evidence of the West 1/4 corner of Section 18, Town 3 North, Range 1 West, of the 4th Principal Meridian, and I re-established said corner according to the Wisconsin statutes as shown and described hereon.

Dated this 16th day of April, 2000

Larry L. Austin
Larry L. Austin S-1903



● = CORNER LOCATION

WEST 1/4 CORNER OF
SECTION 18, T 3 N R 1 W
TOWN OF PLATTEVILLE

HISTORY OF ORIGINAL CORNER ESTABLISHMENT:

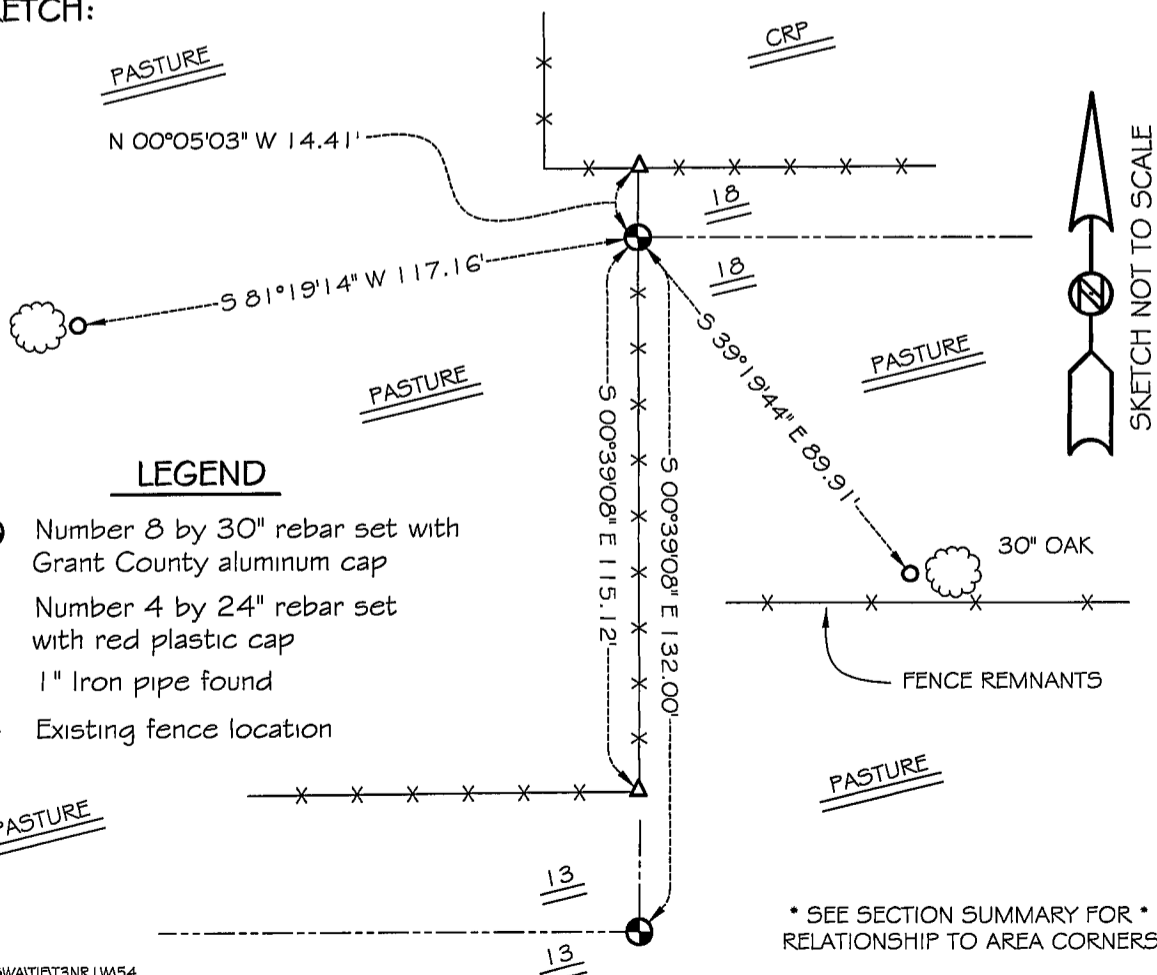
Corner was never originally set.
In 1854 Overton set the corner. (Unknown monument & ties)

DESCRIPTION OF CORNER EVIDENCE FOUND:

I found a 1" iron pipe and did not accept its location. I reset the corner based on evidence of the survey by Overton. Verified this location using E.D.M. & G.P.S. methods.

DESCRIPTION OF CORNER AND WITNESS MONUMENTS, references and accessories used to perpetuate the original or re-established location of this corner
WITNESS TO THE CORNER LOCATION: BOBBY SEDGWICK & SHELBY BLINDERT

SKETCH:



LEGEND

- Number 8 by 30" rebar set with Grant County aluminum cap
- Number 4 by 24" rebar set with red plastic cap
- △ 1" Iron pipe found
- ×× Existing fence location

* SEE SECTION SUMMARY FOR *
RELATIONSHIP TO AREA CORNERS