

GRANT COUNTY CERTIFIED LAND CORNER

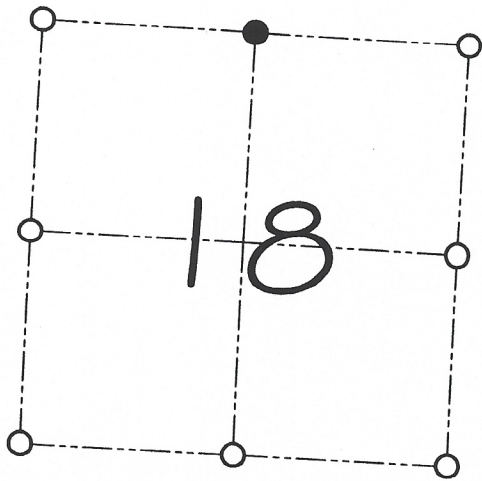
CORNER NUMBER 52

CERTIFICATE:

I, Larry L. Austin, do hereby certify that on the 16th day of March, 2000, I found evidence of the North 1/4 corner of Section 18, Town 3 North, Range 1 West, of the 4th Principal Meridian, and I re-established said corner according to the Wisconsin statutes as shown and described hereon.

Dated this 16th day of April, 2000

Larry L. Austin
Larry L. Austin S-1903



● = CORNER LOCATION

NORTH 1/4 CORNER OF SECTION 18, T 3 N R 1 W TOWN OF PLATTEVILLE

HISTORY OF ORIGINAL CORNER ESTABLISHMENT:

Corner was originally set in 1833 by Robert Clark.
In 1854 Overton tied to the corner. (unknown monument)
In 1982 Larry Schmit set a 1" iron pipe.

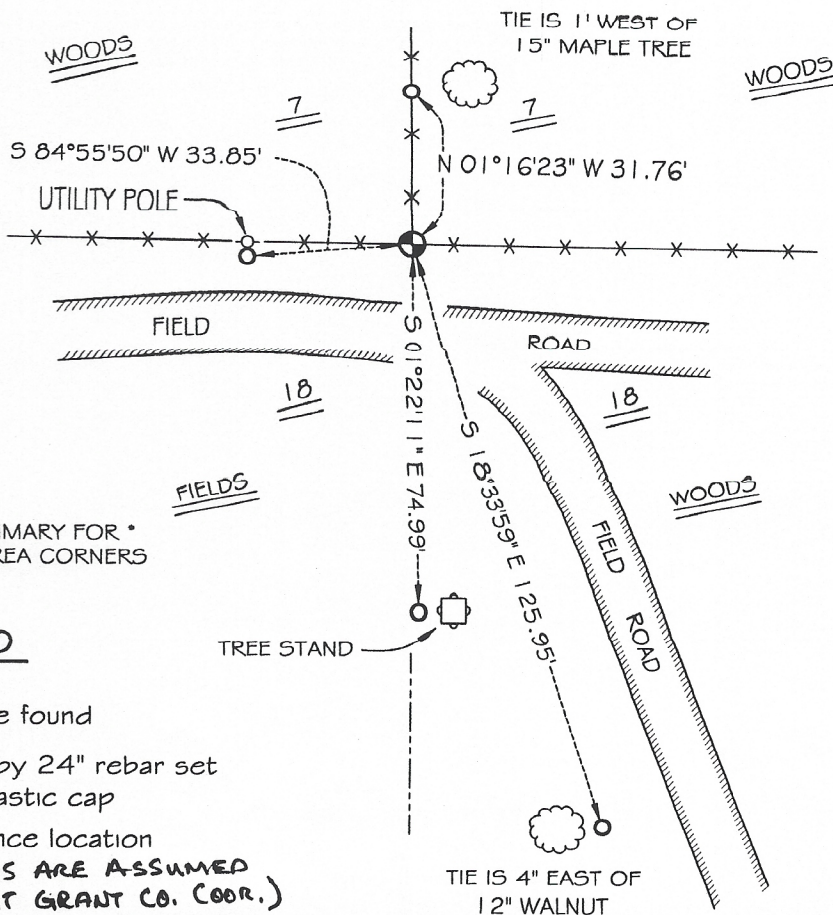
DESCRIPTION OF CORNER EVIDENCE FOUND:

I found the 1" iron pipe set by Schmit and accepted it's location after an E.D.M. & G.P.S. traverse of the area.

DESCRIPTION OF CORNER AND WITNESS MONUMENTS, references and accessories used to perpetuate the original or re-established location of this corner

WITNESS TO THE CORNER LOCATION: BOBBY SEDGWICK & SHELBY BLINDERT

SKETCH:



* SEE SECTION SUMMARY FOR *
RELATIONSHIP TO AREA CORNERS

LEGEND

- 1" Iron pipe found
- Number 4 by 24" rebar set with red plastic cap
- X- Existing fence location

**NOTE: BEARINGS ARE ASSUMED
(NOT GRANT CO. COOR.)**