

31049

U.S. PUBLIC LAND SURVEY MONUMENT RECORD - GRANT COUNTY, WI

Section 8, Town 3 North Range 1 West, Town of Platteville (a)

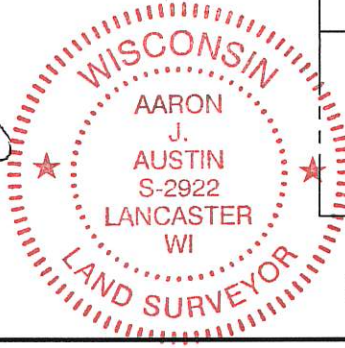
NOTE: This form is intended and designed to fulfill all requirements of the Wisconsin Administrative Code Chapter A-E 7.08, U.S. Public Land Survey Monument Record (3) (a) (b) (c) (d) (e) (f) (g) (h) (i).

CERTIFICATE: (i)

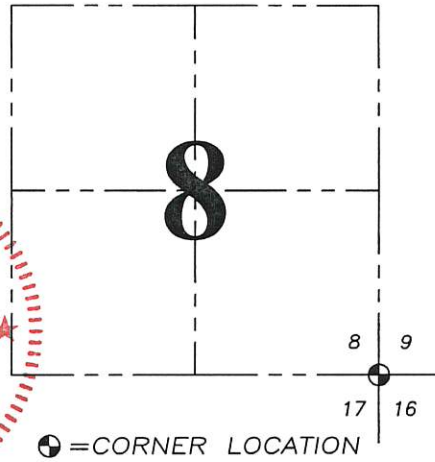
I, Aaron J. Austin, Wisconsin Professional Land Surveyor, do hereby certify that the corner location on this record was determined by me and/or under my direct supervision and that this U.S. Public Land Survey Monument Record is correct and complete to the best of my knowledge and belief.

Dated this 22nd day of May, 2018.

Aaron J. Austin
Aaron J. Austin, S-2922



Grant County I.D. No. 49



HISTORY OF CORNER ESTABLISHMENT:

Robert Clark set the original corner in 1833.
Larry Austin set a Grant County Aluminum Monument and prepared a Survey Monument Record dated 3-22-1995.

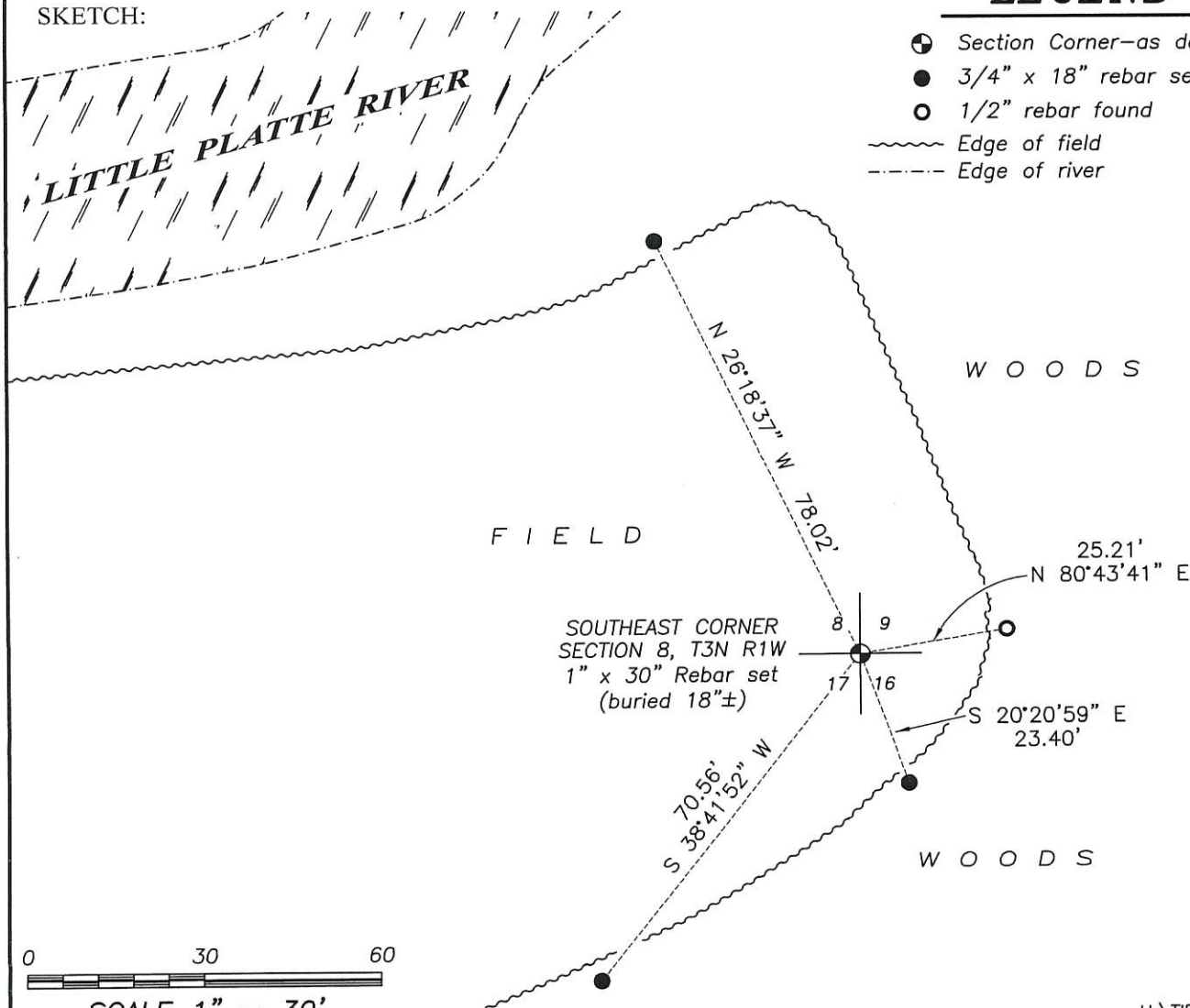
DESCRIPTION OF CORNER EVIDENCE FOUND: (b) (f) (g) (h)

I reset the monument at the recorded dimension 2657.22 feet from a found Railroad spike at the North 1/4 corner of Section 16 based upon a Plat of Survey by Larry Austin dated 5-18-2009 filed in Book 25, Page 15 and the recorded dimension of 2640.00 feet from a found 1 1/4" Rebar at the West 1/4 corner of Section 16 based upon Certified Survey Map No. 575. I set three witness corners. I did find one witness corner that did not match the Survey Monument Record prepared by Larry Austin. I set three additional witness corners after I verified the monument's location with G.P.S. and E.D.M. methods.

DESCRIPTION OF CORNER AND WITNESS MONUMENTS, references and accessories used to perpetuate the original or re-established location of this corner. (c) (d) (e)

Witnesses to corner location Shane Austin.

SKETCH:



U. S. PUBLIC LAND SURVEY MONUMENT RECORD

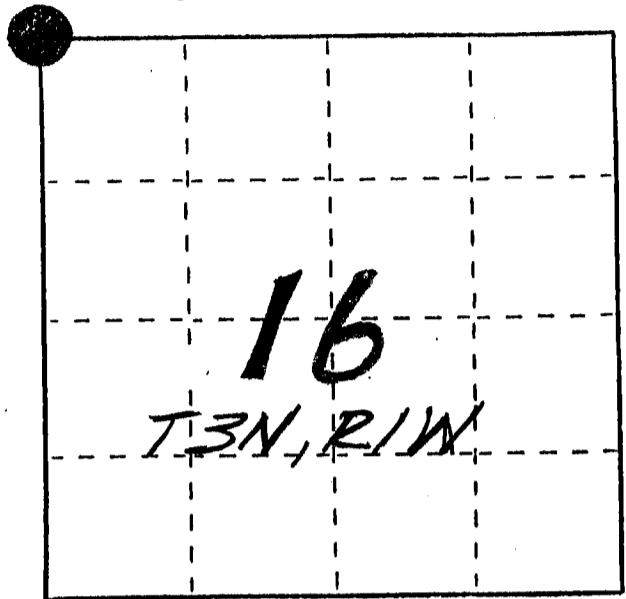
INSTRUCTIONS :

This record shall show the location of the corner and shall include all of the following nine elements (a through i).

- (a) Identify the corner by reference to the U.S. public land survey system.

● = Corner monument restored.

NW COR SEC 16
T3N, R1W OF THE 4TH P.M.
GRANT COUNTY, WI



- (b) Describe any record evidence, monument evidence, occupational evidence, testimonial evidence or any other material evidence you considered, and whether the monument was found or placed.

NO RECORD FOUND OF THE CORNER SINCE ORIG SURVEYS.
ORIG CORNER SET IN 1833 BY ROBERT CLARK; I SET THE CORNER AT THE ORIG DISTANCE FROM N 1/4 CORNER OF SECTION 16; E-W LOCATION BASED ON A FOUND N-S FENCE; N-S LOCATION VERIFIED BY FOUND MARKERS ALONG SURVEYS PERFORMED TO THE EAST OF THE CORNER.

- (c) In the plan view drawing below, provide reference ties to at least 4 witness monuments, or, if the location is within a municipality, to at least 2 witness monuments. (Witness monuments shall be made of concrete, natural stone, iron or other equally durable material, ~~except wood.~~) Describe witness monuments.

- (d) Show a plan view drawing depicting the relevant monuments and reference ties which is sufficient in detail to enable accurate relocation of the corner monument if the corner monument is disturbed. Indicate north.

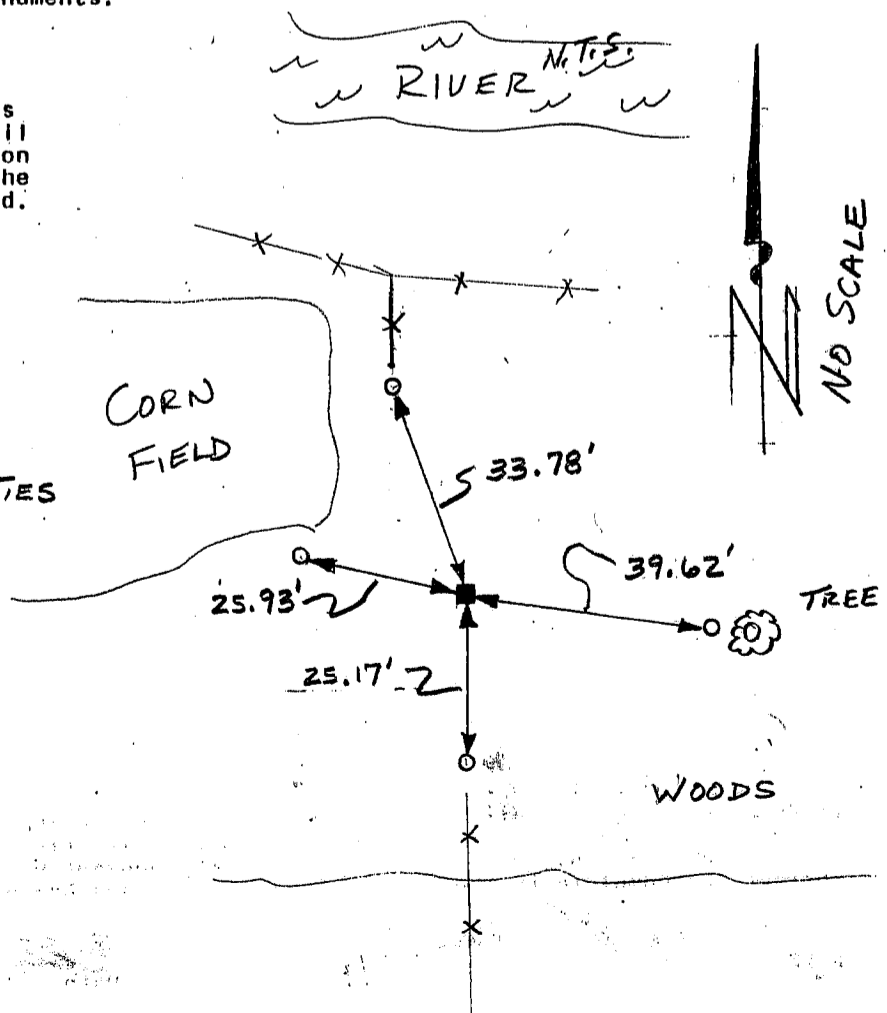
LEGEND

■ GRANT COUNTY ALUM. MON. WITH CAP-PLACED

○ 1/2" x 24" REBAR SET = TIES

XX EXISTING FENCE

NTS ⇒ NOT TO SCALE



(e) Describe any material discrepancy between the location of the corner as restored or reestablished and the location of that corner as previously restored or reestablished by distance and direction. Show the discrepancy on the plan view drawing under (d), above. Show the distances between the corner as previously restored or reestablished and (1) the corner as restored or reestablished, and (2) to at least 2 of the witness monuments shown on the drawing in (d), above.

N.A.

(f) Was the corner restored through acceptance of (1) an obliterated evidence location, or, (2) a found perpetuated location?

FOUND PERPETUATED LOCATION

(g&h) Was the corner reestablished through lost corner proportionate methods? If so, show the method, including the directions and distances to other public land survey corners used as evidence or used for proportioning in determining the corner location?

No

(1) I, *Larry L. Austin*
(type or print name) certify that the corner location shown on this record was determined by me or under my direction and control and that this U.S. Public Land Survey Monument Record is correct and complete to the best of my knowledge and belief.

Larry L. Austin
Signature

3-22-95
Date

