

U.S. PUBLIC LAND SURVEY MONUMENT RECORD - GRANT COUNTY, WI

Section 15, Town 3 North Range 1 West, Town of Platteville (a)

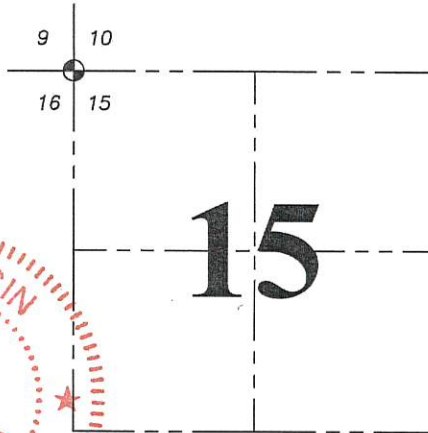
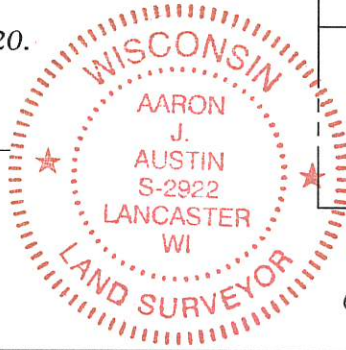
NOTE: This form is intended and designed to fulfill all requirements of the Wisconsin Administrative Code Chapter A-E 7.08, U.S. Public Land Survey Monument Record (3) (a) (b) (c) (d) (e) (f) (g) (h) (i).

CERTIFICATE: (i)

I, Aaron J. Austin, Wisconsin Professional Land Surveyor, do hereby certify that the corner location on this record was determined by me and/or under my direct supervision and that this U.S. Public Land Survey Monument Record is correct and complete to the best of my knowledge and belief.

Dated this 3rd day of December, 2020.

Aaron J. Austin
 Aaron J. Austin, S-2922



☉ = CORNER LOCATION

Grant County Coordinates:
 NAD 83 (2011)
 Northing: 484,557.29
 Easting: 879,461.64

HISTORY OF CORNER ESTABLISHMENT:

Original corner was set in 1833 by Robert Clark.
 Larry Austin found a P.K. Nail and prepared a Survey Monument Record dated 8/10/2005.

DESCRIPTION OF CORNER EVIDENCE FOUND: (b) (f) (g) (h)

I set a 1/2" x 4 3/4" Steel Cotton Gine Spike from the existing ties. I verified the Monument's location with G.P.S. and E.D.M. methods.

DESCRIPTION OF CORNER AND WITNESS MONUMENTS, references and accessories used to perpetuate the original or re-established location of this corner. (c) (d) (e)

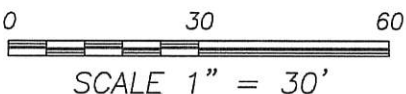
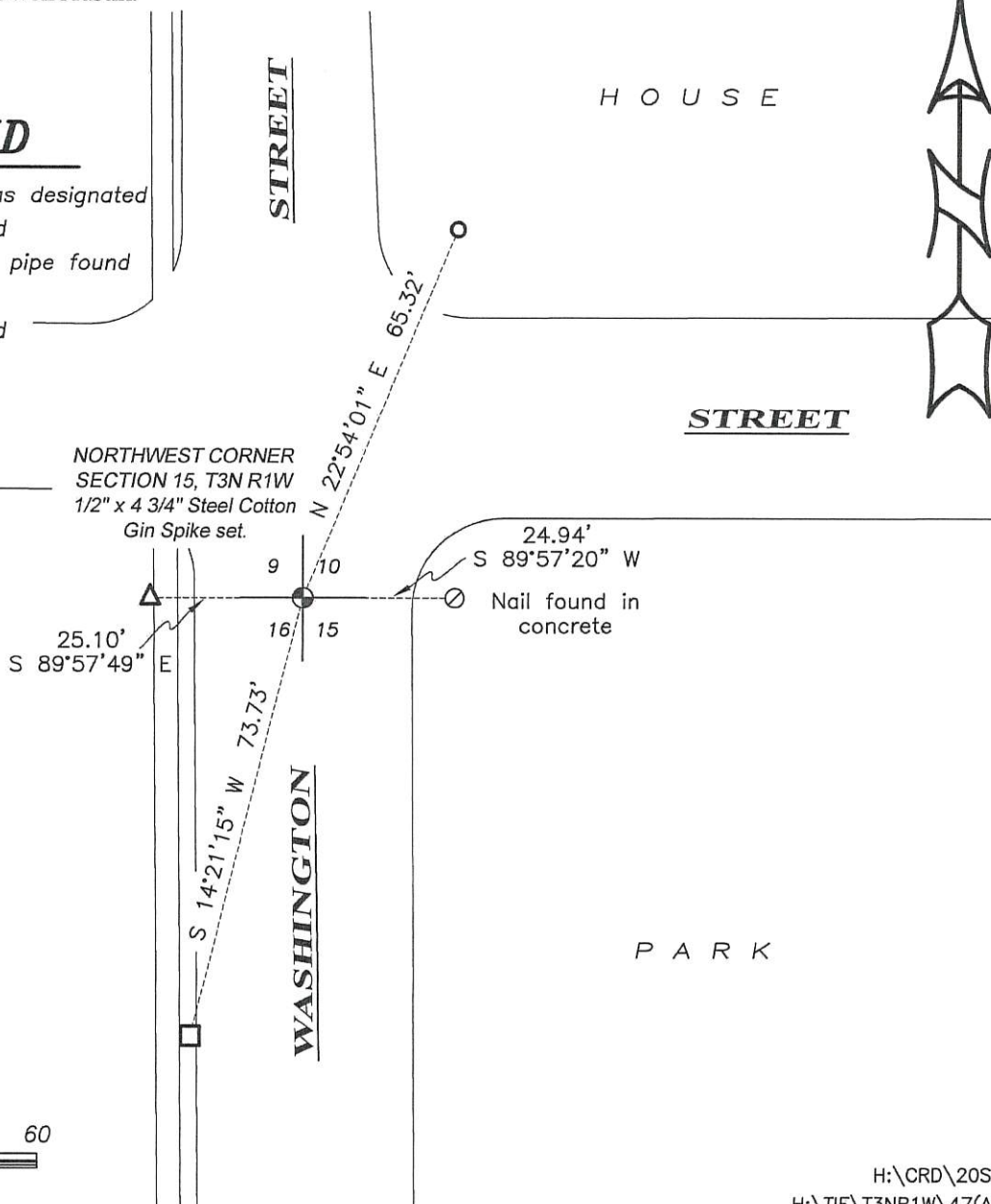
Witnesses to corner location Owen Austin.
 Drawn by Owen Austin

SKETCH:

LEGEND

- ☉ Section Corner—as designated
- 3/4" rebar found
- △ 1" diameter iron pipe found
- ⊙ PK Nail found
- 1/2" rebar found

MADISON



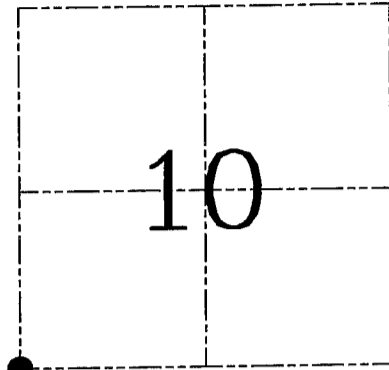
U.S. PUBLIC LAND SURVEY MONUMENT RECORD – GRANT COUNTY, WI
Section 10, Town 3 North Range 1 West, Town of Platteville

CERTIFICATE

I, Larry L. Austin, do hereby certify that the corner location on this record was determined by me and/or under my direct supervision and that this U.S. public land survey monument record is correct and complete to the best of my knowledge and belief.

Dated this 10th day of August, 2005

Larry L. Austin
 Larry L. Austin S-1903



HISTORY OF CORNER ESTABLISHMENT

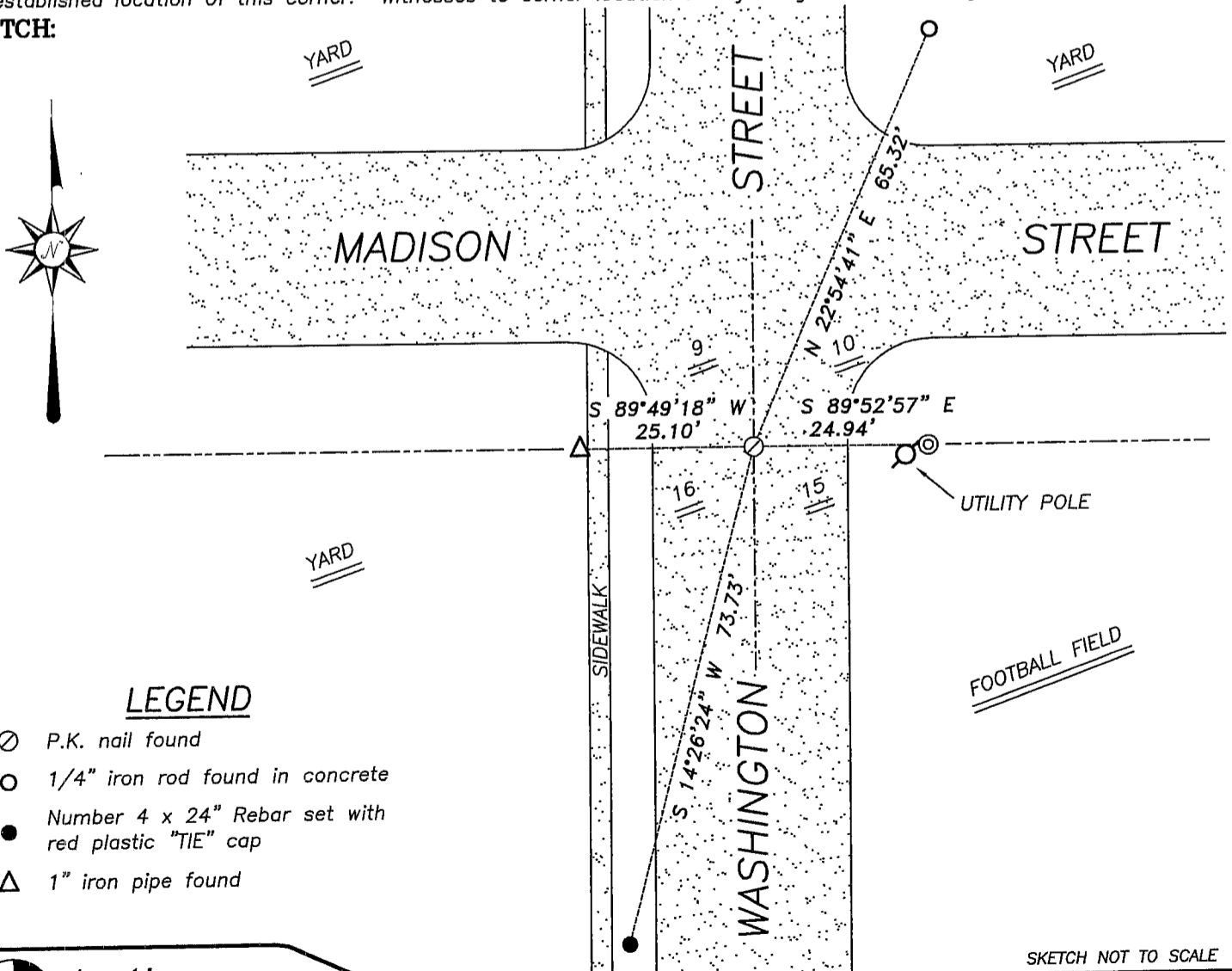
Corner was originally set in 1833 by Clark. Many surveys have tied to this corner. No record of who placed this monument was found.

DESCRIPTION OF CORNER EVIDENCE FOUND

I found and accepted the P.K. nail used by various surveys. Verified this location using EDM & GPS methods.

DESCRIPTION OF CORNER AND WITNESS MONUMENTS, references and accessories used to perpetuate the original or re-established location of this corner. Witnesses to corner location Bobby Sedgwick & Brad Digman & Shane Austin

SKETCH:



LEGEND

- ⊙ P.K. nail found
- 1/4" iron rod found in concrete
- Number 4 x 24" Rebar set with red plastic "TIE" cap
- △ 1" iron pipe found

SKETCH NOT TO SCALE



Austin Engineering LLC

4211 HWY 81 E, LANCASTER, WI 53813
 PHONE 608-723-6363 FAX 608-723-6702

JOB NUMBER 05S050
 FIELDBOOK: TDSR, 2512
 G:\GRANTDOT\T3NR1W
 H:\TIE\T3NR1W\47

DRAWN BY: SW AUSTIN
 APPROVED: LL AUSTIN