

U.S PUBLIC LAND SURVEY MONUMENT RECORD - GRANT COUNTY, WI
SECTION 10, TOWN 3 NORTH, RANGE 1 WEST, CITY OF PLATTEVILLE

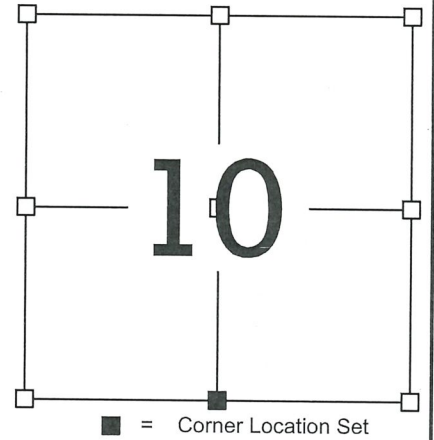
CERTIFICATE: (i)

I, STANLEY J. KING, DO HEREBY CERTIFY THAT THE CORNER LOCATION ON THIS RECORD WAS DETERMINED BY ME AND/ OR UNDER MY DIRECT SUPERVISION AND THAT THIS U.S PUBLIC LAND SURVEY MONUMENT RECORD IS CORRECT AND COMPLETE TO THE BEST OF MY KNOWLEDGE AND BELIEF.

DATED THIS 31st DAY OF July, 2022

Stanley King
 STANLEY J. KING, S-2001

DELTA 3 ENGINEERING, INC.
 875 S. CHESTNUT STREET
 PLATTEVILLE, WISCONSIN 53818
 KINGS@DELTA3ENG.BIZ



HISTORY OF CORNER ESTABLISHMENT:

CORNER WAS ORIGINALLY SET IN THE YEAR 1833 BY ROBERT CLARK. NO RECORD OF WHO PLACED THE STONE MONUMENT. MANY RECENT SURVEYS HAVE ACCEPTED AND USED THE STONE.

DESCRIPTION OF CORNER EVIDENCE FOUND:

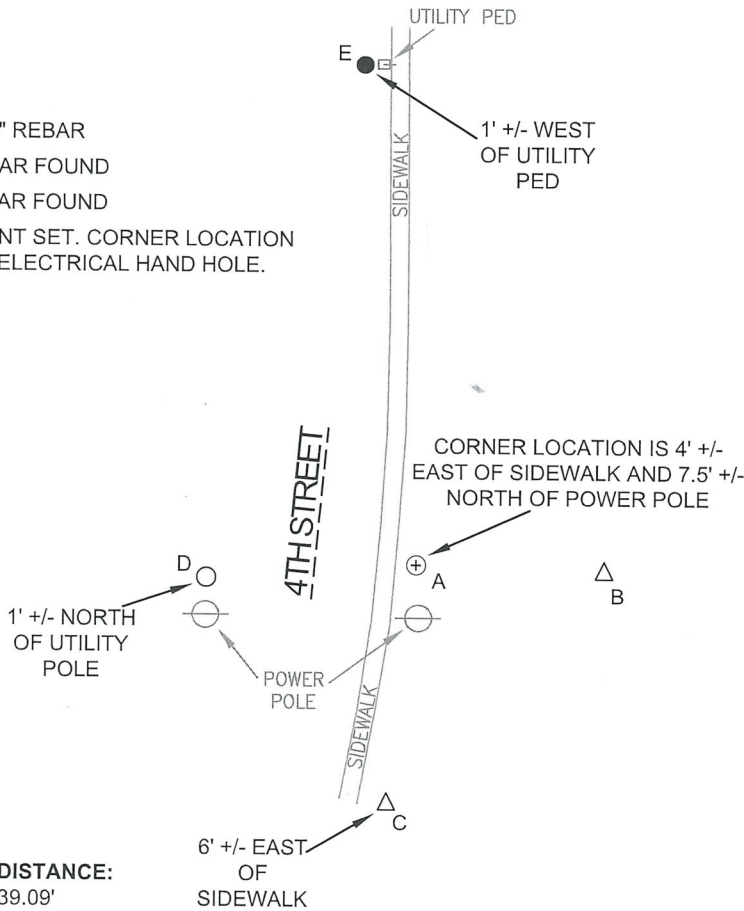
LOCATION VERIFIED BY MULTIPLE GPS OBSERVATIONS AND VERIFICATION OF FOUND WITNESS MONUMENTS.

DESCRIPTION OF CORNER AND WITNESS MONUMENTS REFERENCES AND ACCESSORIES USED TO PERPETUATE THE ORIGINAL OR RE-ESTABLISHED LOCATION OF THIS CORNER: STONE WAS REMOVED BY UTILITY COMPANY WHEN THEY PLACED A HANDHOLE AT THE STONES ORIGINAL LOCATION. SET CORNER LOCATION USING 2 FOUND TIES AND PREVIOUS COORDINATES TAKEN ON STONE MONUMENT.

SKETCH:

LEGEND

- SET 3/4" X 18" REBAR
- 3/4" DIA. REBAR FOUND
- △ 1/2" DIA. REBAR FOUND
- ⊕ NO MONUMENT SET. CORNER LOCATION FALLS IN AN ELECTRICAL HAND HOLE.

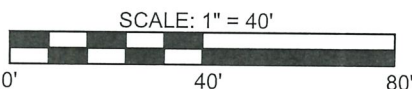


LINE:	BRG:	DISTANCE:
A-B	S 87°51'55" E	39.09'
A-C	S 06°43'13" W	50.02'
A-D	S 86°26'19" W	43.87'
A-E	N 06°16'37" W	104.58'

GRANT COUNTY COORDINATES: (NAD 83 (2011))

NORTHING: 484,566.22
 EASTING: 882,118.41

WITNESS TO THE CORNER LOCATION: A. LOEFFELHOLZ
 DELTA 3 PROJECT NUMBER: D25-135
 FIELD BOOK: AUSTIN'S #3 2025
 DATE OF FIELDWORK: 06/30/2025



31046

U.S. PUBLIC LAND SURVEY MONUMENT RECORD - GRANT COUNTY, WI

Section 10, Town 3 North Range 1 West, Town of Platteville (a)

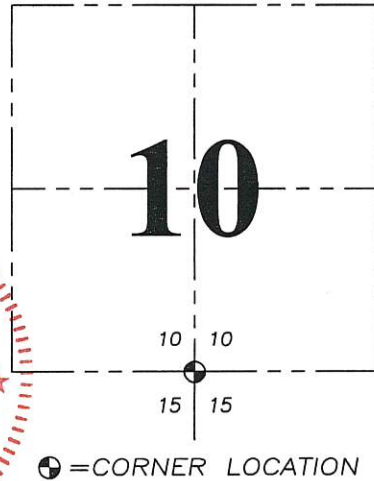
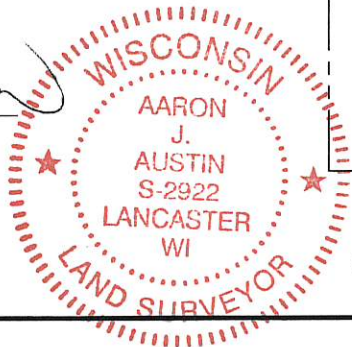
NOTE: This form is intended and designed to fulfill all requirements of the Wisconsin Administrative Code Chapter A-E 7.08, U.S. Public Land Survey Monument Record (3) (a) (b) (c) (d) (e) (f) (g) (h) (i).

CERTIFICATE: (i)

I, Aaron J. Austin, Wisconsin Professional Land Surveyor, do hereby certify that the corner location on this record was determined by me and/or under my direct supervision and that this U.S. Public Land Survey Monument Record is correct and complete to the best of my knowledge and belief.

Dated this 1st day of August, 2017.

Aaron J. Austin
Aaron J. Austin, S-2922



☉ = CORNER LOCATION

HISTORY OF CORNER ESTABLISHMENT:

Robert Clark set the original corner in 1832.
Larry Austin prepared a Survey Monument Record dated 8-10-2005.

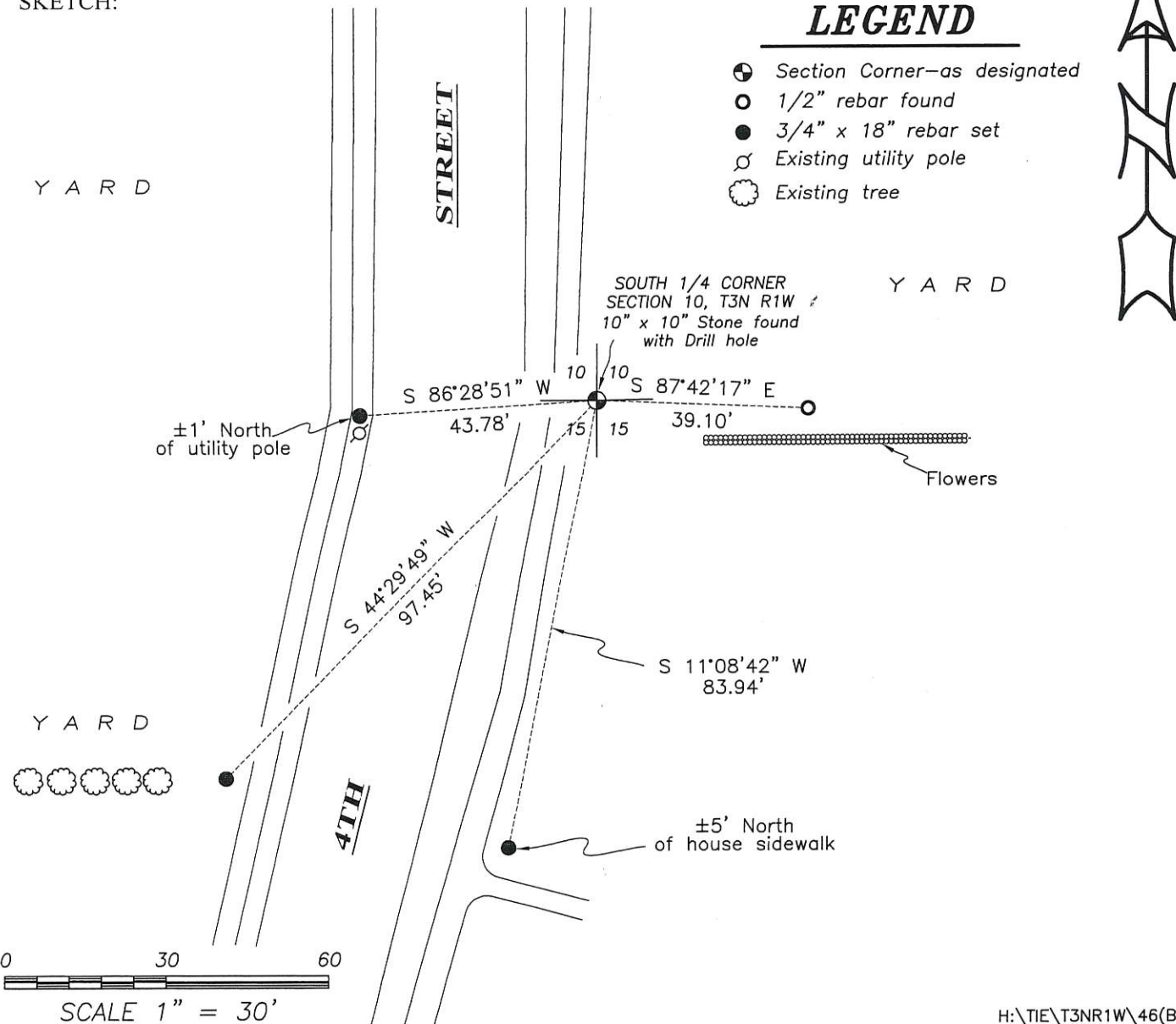
DESCRIPTION OF CORNER EVIDENCE FOUND: (b) (f) (g) (h)

I found the 10" x 10" Stone with a drill hole and one witness monument as previously tied out by Larry Austin. I set three additional witness corners after I verified the corner's location with G.P.S. and E.D.M. methods.

DESCRIPTION OF CORNER AND WITNESS MONUMENTS , references and accessories used to perpetuate the original or re-established location of this corner. (c) (d) (e)

Witnesses to corner location Shane Austin, Aaron Austin.

SKETCH:



LEGEND

- ☉ Section Corner—as designated
- 1/2" rebar found
- 3/4" x 18" rebar set
- ♂ Existing utility pole
- ⊙ Existing tree



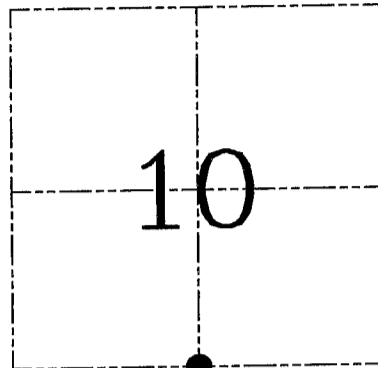
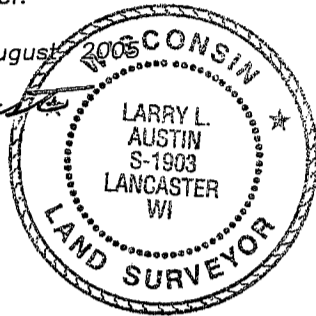
U.S. PUBLIC LAND SURVEY MONUMENT RECORD – GRANT COUNTY, WI
Section 10, Town 3 North Range 1 West, Town of Platteville

CERTIFICATE

I, Larry L. Austin, do hereby certify that the corner location on this record was determined by me and/or under my direct supervision and that this U.S. public land survey monument record is correct and complete to the best of my knowledge and belief.

Dated this 10th day of August 2005

Larry L. Austin
 Larry L. Austin S-1903



● = CORNER LOCATION

HISTORY OF CORNER ESTABLISHMENT

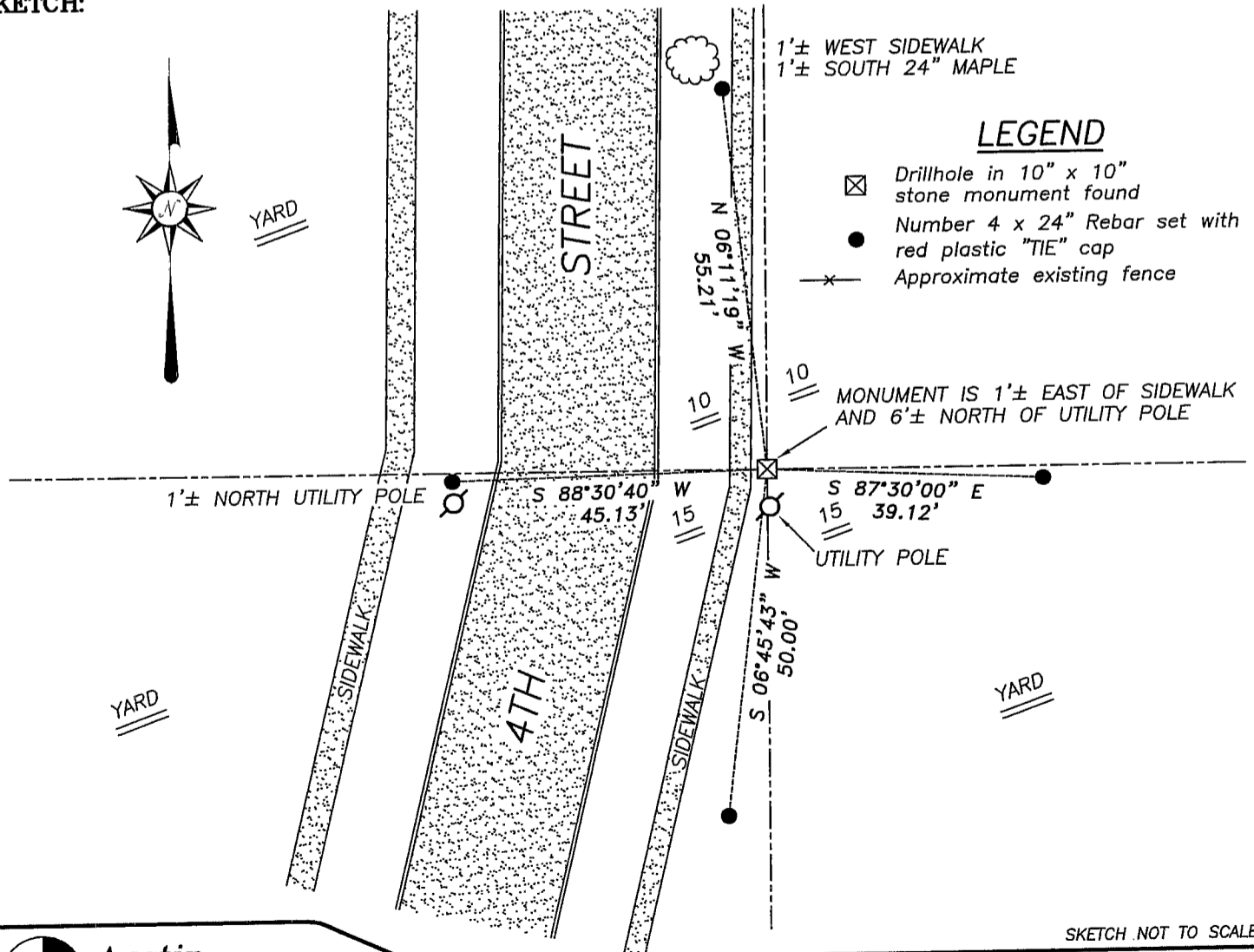
Corner was originally set in 1833 by Clark. No record with who placed the stone monument. Many recent surveys have accepted and used this stone on the platting of Platteville.

DESCRIPTION OF CORNER EVIDENCE FOUND

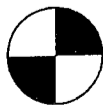
I found and accepted the stone monument.
 Verified this location using EDM & GPS methods.

DESCRIPTION OF CORNER AND WITNESS MONUMENTS, references and accessories used to perpetuate the original or re-established location of this corner. Witnesses to corner location Bobby Sedgwick & Brad Digman & Shane Austin

SKETCH:



SKETCH NOT TO SCALE



Austin Engineering LLC

4211 HWY 81 E, LANCASTER, WI 53813
 PHONE 608-723-6363 FAX 608-723-6702

JOB NUMBER 05S050
 FIELDBOOK: TDSR, 2512
 G:\GRANTDOT\T3NR1W
 H:\TIE\T3NR1W\46

DRAWN BY: SW AUSTIN
 APPROVED: LL AUSTIN