

U.S. PUBLIC LAND SURVEY MONUMENT RECORD - GRANT COUNTY, WI

Section 10, Town 3 North Range 1 West, Town of Platteville (a)

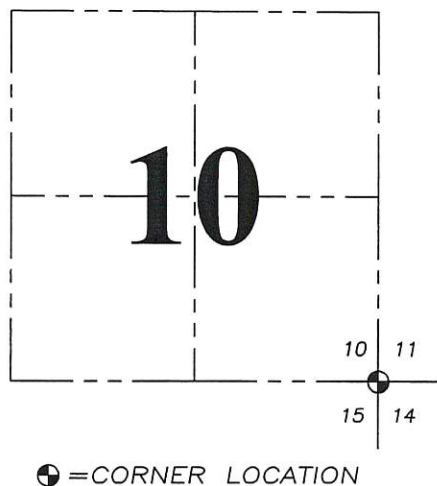
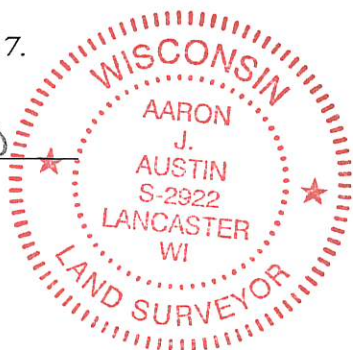
NOTE: This form is intended and designed to fulfill all requirements of the Wisconsin Administrative Code Chapter A-E 7.08, U.S. Public Land Survey Monument Record (3) (a) (b) (c) (d) (e) (f) (g) (h) (i).

CERTIFICATE: (i)

I, Aaron J. Austin, Wisconsin Professional Land Surveyor, do hereby certify that the corner location on this record was determined by me and/or under my direct supervision and that this U.S. Public Land Survey Monument Record is correct and complete to the best of my knowledge and belief.

Dated this 25th day of July, 2017.

Aaron J. Austin
Aaron J. Austin, S-2922



HISTORY OF CORNER ESTABLISHMENT:

Original corner was set in 1833 by Robert Clark. Larry Austin reset the corner and prepared a survey monument record dated 4/29/99.

DESCRIPTION OF CORNER EVIDENCE FOUND: (b) (f) (g) (h)

I found all four witness monuments as established by Larry. I set a mag nail at the corner after I verified it's location with G.P.S. and E.D.M. methods.

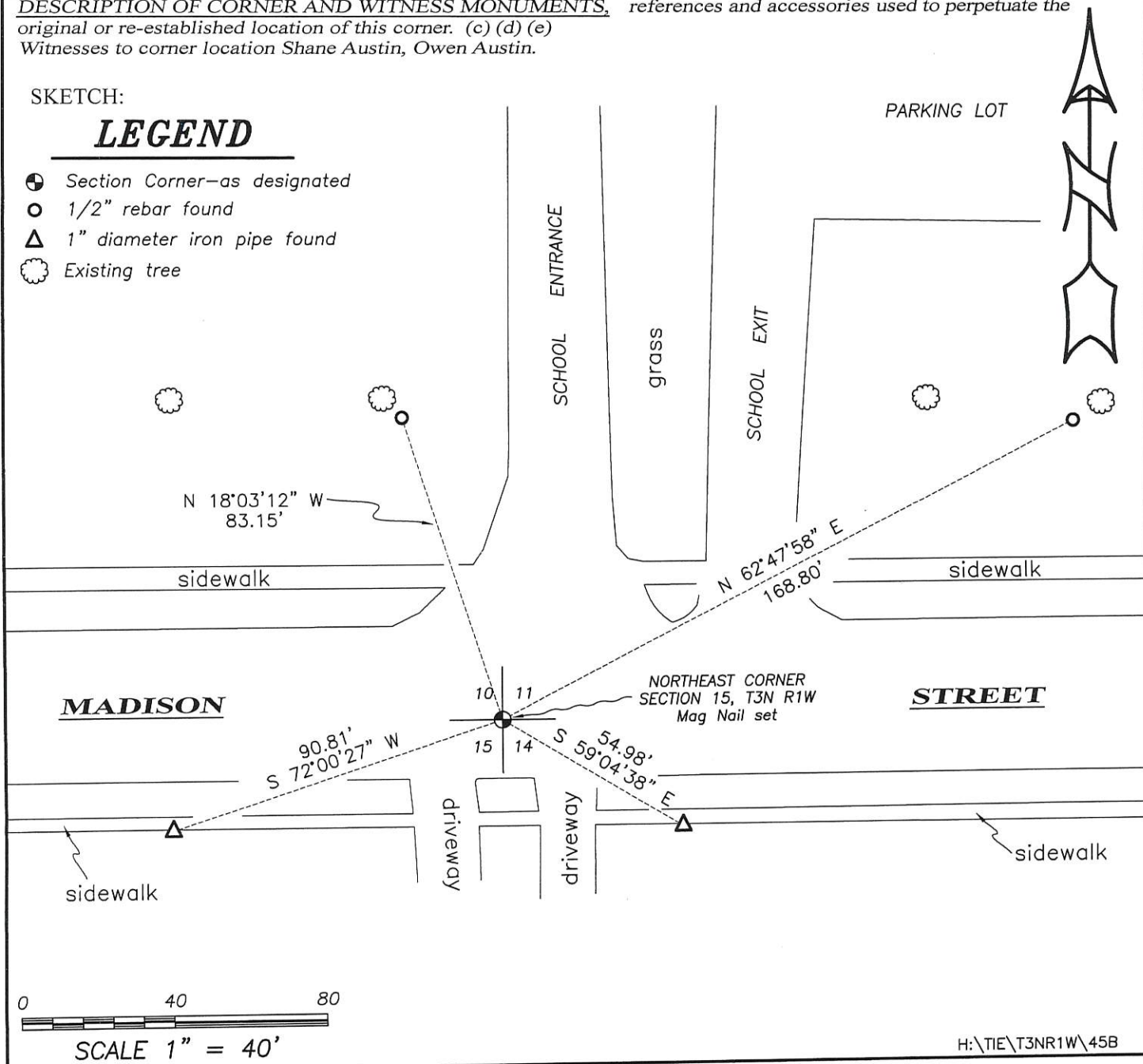
DESCRIPTION OF CORNER AND WITNESS MONUMENTS. references and accessories used to perpetuate the original or re-established location of this corner. (c) (d) (e)

Witnesses to corner location Shane Austin, Owen Austin.

SKETCH:

LEGEND

- Section Corner—as designated
- 1/2" rebar found
- △ 1" diameter iron pipe found
- ☉ Existing tree



GRANT COUNTY CERTIFIED LAND CORNER

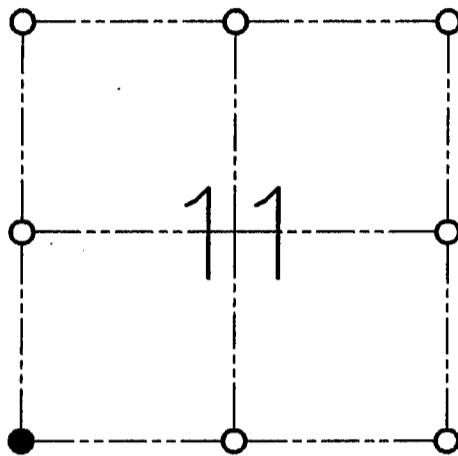
CORNER NO. 45

CERTIFICATE:

I, LARRY L. AUSTIN, DO HEREBY CERTIFY THAT ON THIRTY-FIRST DAY OF MARCH, 1999, I FOUND EVIDENCE OF THE SOUTHWEST CORNER SECTION 11, TOWN 3 NORTH, RANGE 1 WEST, OF THE FOURTH PRINCIPAL MERIDIAN, AND I RE-ESTABLISHED SAID CORNER ACCORDING TO THE WISCONSIN STATUTES AS SHOWN AND DESCRIBED HEREON.

DATED THIS TWENTY-NINTH DAY OF APRIL, 1999

Larry L. Austin
LARRY L. AUSTIN S-1903



● = CORNER LOCATION

**SOUTHWEST CORNER
SECTION 11, T 3 N R 1 W
TOWN OF PLATTEVILLE**

HISTORY OF ORIGINAL CORNER ESTABLISHMENT:

CORNER WAS SET IN 1833 BY ROBERT CLARK. CORNER WAS TIED TO BY DALE DIXON IN 1972.

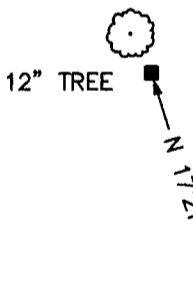
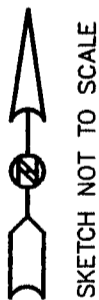
DESCRIPTION OF CORNER EVIDENCE FOUND:

I USED MONUMENTS OF THE DALE DIXON SURVEY TO RE-ESTABLISHED THE CORNER LOCATION. VERIFIED THIS LOCATION USING E.D.M. AND G.P.S. METHODS.

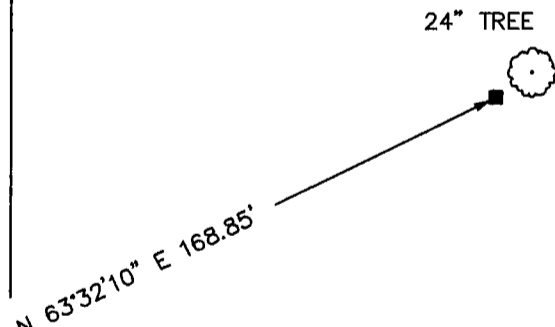
DESCRIPTION OF CORNER AND WITNESS MONUMENTS, REFERENCES AND ACCESSORIES USED TO PERPETUATE THE ORIGINAL OR RE-ESTABLISHED LOCATION OF THIS CORNER:

WITNESS TO THE CORNER LOCATION:

BOBBY SEDGWICK
SHELBY BLINDERT

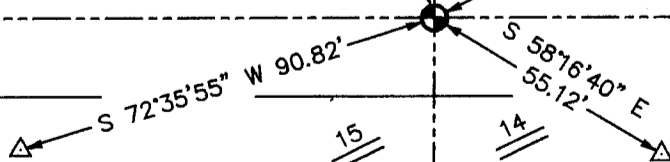


SKETCH:



MADISON

STREET



LEGEND

- NO. 8 X 30" REBAR SET WITH GRANT COUNTY ALUMINUM CAP
- NO. 4 X 24" REBAR SET WITH RED PLASTIC CAP
- △ 1" IRON PIPE FOUND