

GRANT COUNTY CERTIFIED LAND CORNER

CORNER NO. 44

CERTIFICATE:

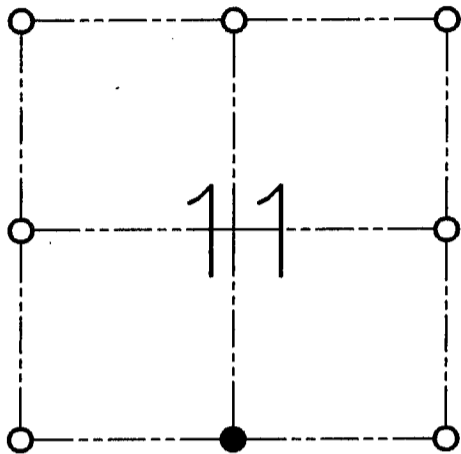
I, LARRY L. AUSTIN, DO HEREBY CERTIFY THAT ON THIRTY-FIRST DAY OF MARCH, 1999, I FOUND MONUMENTED EVIDENCE OF THE SOUTH 1/4 CORNER SECTION 11, TOWN 3 NORTH, RANGE 1 WEST, OF THE FOURTH PRINCIPAL MERIDIAN, AND I RE-ESTABLISHED SAID CORNER ACCORDING TO THE WISCONSIN STATUTES AS SHOWN AND DESCRIBED HEREON.

DATED THIS TWENTY-NINTH DAY OF APRIL, 1999

Larry L. Austin
LARRY L. AUSTIN S-1903



SEAL



● = CORNER LOCATION

**SOUTH 1/4 CORNER OF
SECTION 11, T 3 N R 1 W
TOWN OF PLATTEVILLE**

HISTORY OF ORIGINAL CORNER ESTABLISHMENT:

CORNER WAS SET IN 1833 BY ROBERT CLARK.

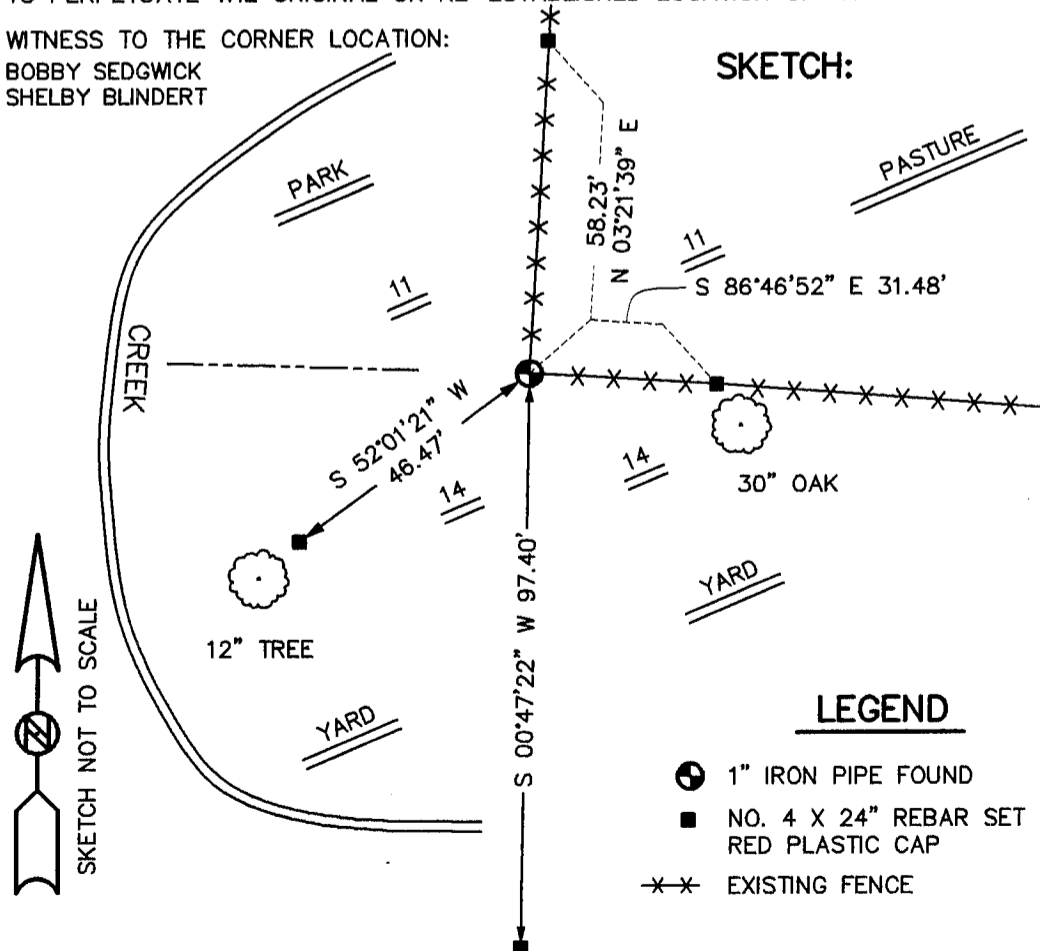
DESCRIPTION OF CORNER EVIDENCE FOUND:

I FOUND A 1" IRON PIPE AT AN OCCUPIED FENCE CORNER AND ACCEPTED IT'S LOCATION. VERIFIED THIS LOCATION USING E.D.M. AND G.P.S. METHODS.

DESCRIPTION OF CORNER AND WITNESS MONUMENTS, REFERENCES AND ACCESSORIES USED TO PERPETUATE THE ORIGINAL OR RE-ESTABLISHED LOCATION OF THIS CORNER:

WITNESS TO THE CORNER LOCATION:
BOBBY SEDGWICK
SHELBY BLINDERT

SKETCH:



LEGEND

- 1" IRON PIPE FOUND
- NO. 4 X 24" REBAR SET WITH RED PLASTIC CAP
- EXISTING FENCE