

GRANT COUNTY CERTIFIED LAND CORNER

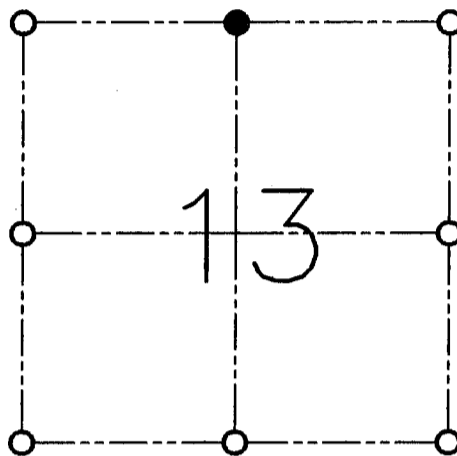
CORNER NO. 42

CERTIFICATE:

I, LARRY L. AUSTIN, DO HEREBY CERTIFY THAT ON FIRST DAY OF MAY, 1999, I FOUND MONUMENTED EVIDENCE OF THE NORTH 1/4 CORNER SECTION 13, TOWN 3 NORTH, RANGE 1 WEST, OF THE FOURTH PRINCIPAL MERIDIAN, AND I RE-ESTABLISHED SAID CORNER ACCORDING TO THE WISCONSIN STATUTES AS SHOWN AND DESCRIBED HEREON.

DATED THIS TWENTY-SECOND DAY OF MAY, 1999

Larry L. Austin
LARRY L. AUSTIN S-1903



● = CORNER LOCATION

**NORTH 1/4 CORNER OF
SECTION 13, T 3 N R 1 W
TOWN OF PLATTEVILLE**

HISTORY OF ORIGINAL CORNER ESTABLISHMENT:

CORNER WAS SET IN 1833 BY ROBERT CLARK.
IN 1987 I SET A 7/8" IRON BAR AND TIES.

DESCRIPTION OF CORNER EVIDENCE FOUND:

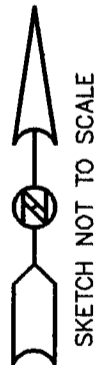
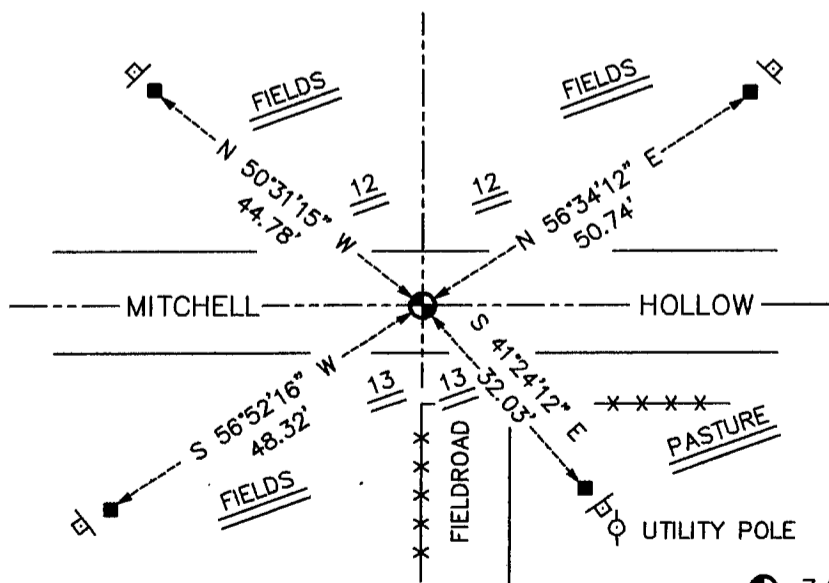
I FOUND THE 7/8" IRON BAR AND NO TIES. I VERIFIED THIS LOCATION USING E.D.M. AND G.P.S. METHODS AND RETIED THE CORNER.

DESCRIPTION OF CORNER AND WITNESS MONUMENTS, REFERENCES AND ACCESSORIES USED TO PERPETUATE THE ORIGINAL OR RE-ESTABLISHED LOCATION OF THIS CORNER:

WITNESS TO THE CORNER LOCATION:

BOBBY SEDGWICK
SHELBY BLINDERT

SKETCH:



LEGEND

- 7/8" IRON BAR FOUND AND SET A GRANT COUNTY ALUMINUM CAP ON IT
- NO. 4 X 24" REBAR SET WITH RED PLASTIC CAP & SIGNS
- E "D.O.T. SURVEY MARKER NEARBY" SIGN SET
- x-x- EXISTING FENCE