

✓ LES 5-6-07

U.S. PUBLIC LAND SURVEY MONUMENT RECORD

(AS REQUIRED BY s.A-E 7.08, WI. ADM. CODE)

HISTORY OF ORIGINAL CORNER ESTABLISHMENT AND SUBSEQUENT RESTORATIONS AND DESCRIPTION OF ANY RECORD, MONUMENT, OCCUPATION, TESTIMONIAL OR OTHER EVIDENCE CONSIDERED

THE CORNER WAS PREVIOUSLY SET AND TIE SHEET DATED 6-21-95 WAS FILED IN LAFAYETTE CO. THE MONUMENT & TIES WERE FOUND IN PLACE ALTHOUGH THE COORDINATES DIFFER SLIGHTLY FROM THOSE PUBLISHED ON A 1999 SURVEY UNDER THE SEAL OF ML LAROSA THE CURRENT COORDINATES ARE BASED ON BELMONT WEST HARM STATION COORDINATES ARE ESTABLISHED TO THE CORNER AND WITNESS TIES AS SHOWN BELOW BEARING REFERENCE AND COORDINATES ARE LAFAYETTE COUNTY COORDINATE SYSTEM NAD 83(91) ENGLISH SYSTEM

LAFAYETTE COUNTY COORDINATES

NORTHING 188287.10 (188287.02)
EASTING 400210.69 (400211.23)

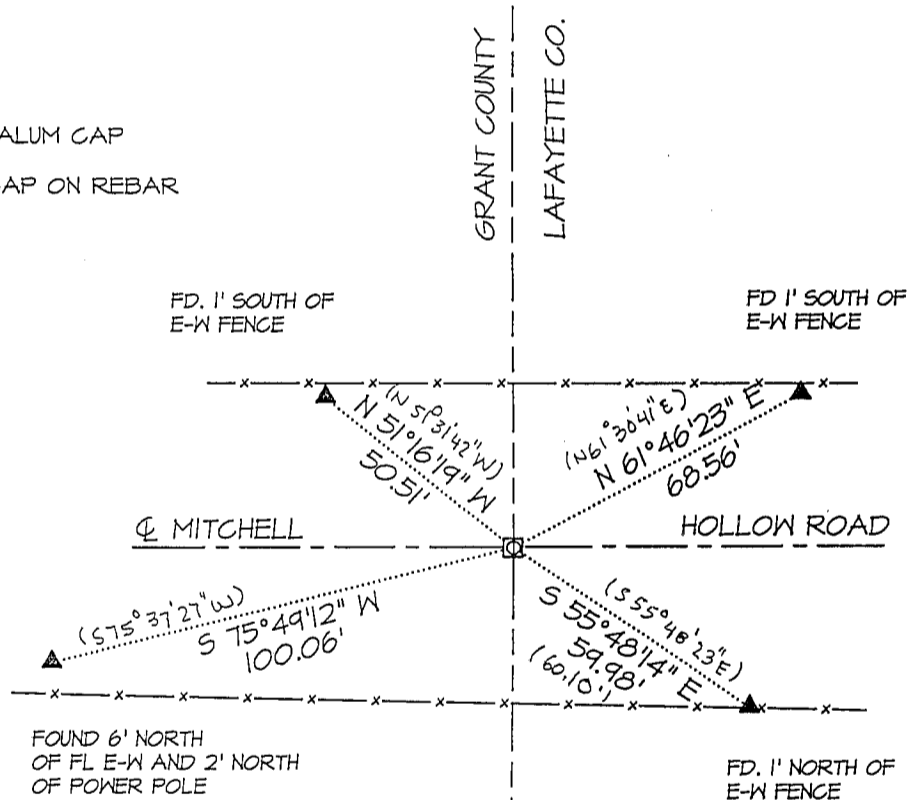
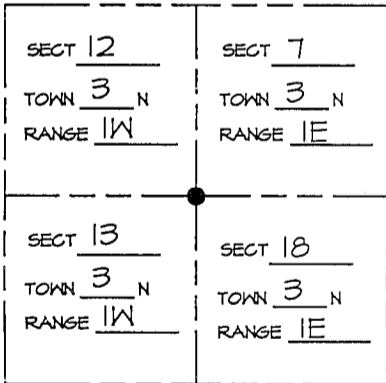
CORNER WAS: (CHECK ALL THAT APPLY)

- RESTORED THROUGH ACCEPTANCE OF AN OBLITERATED EVIDENCE LOCATION
- RESTORED THROUGH ACCEPTANCE OF A FOUND PERPETUATED LOCATION CONSIDERED A LOST CORNER AND REESTABLISHED THROUGH LOST CORNER PROPORTIONATE METHODS (INCLUDE A PLAN VIEW DRAWING SHOWING BEARING & DISTANCE TO OTHER PUBLIC LAND SURVEY CORNERS)
- USED FOR PROPORTIONING AND DETERMINING THE CORNER LOCATION
- RESTORED OR REESTABLISHED IN A LOCATION THAT DIFFERS FROM A PREVIOUS RESTORATION OR REESTABLISHMENT (INCLUDE A PLAN VIEW DRAWING AND INDICATE WHAT WAS SET AND/OR FOUND)

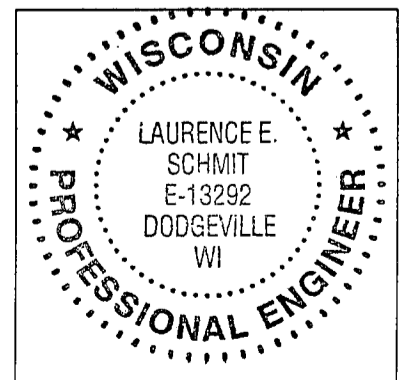
Describe the monument and accessories used to perpetuate the location of the corner. (include a plan view drawing and indicated what was set and/or found)

LEGEND:

- △ SET 5/8"φ REBAR TIE
- FOUND STONE MONUMENT
- ⊠ FOUND REBAR WITH LAF. CO. ALUM CAP
- ⊠ FOUND LAF. CO. ALUMINUM CAP ON REBAR
- () RECORDED AS
- ⊗ FOUND "PK" NAIL
- x—x—x— FENCE
- ▲ FOUND 1/2"φ IRON PIPE



SCALE: 1" = 40'



LAND SURVEYORS SEAL
INDEX NUMBER 53

● = LOCATION OF CORNER
 THE NE COR. OF SECT 13 T 3 N, R 1W
 THE NW COR. OF SECT 18 T 3 N, R 1E
 THE SE COR. OF SECT 12 T 3 N, R 1W
 THE SW COR. OF SECT 7 T 3 N, R 1E

LAFAYETTE & GRANT COUNTY, WISCONSIN
JOB ID: 075-006 BOOK #: 2007-2 P.12

I, LAURENCE E SCHMIT CERTIFY THAT THE CORNER LOCATION SHOWN ON THIS RECORD WAS DETERMINED BY ME OR UNDER MY DIRECTION AND CONTROL AND THAT THIS U.S. PUBLIC LAND SURVEY MONUMENT RECORD IS CORRECT AND COMPLETE TO THE BEST OF MY KNOWLEDGE AND BELIEF.

Laurence E Schmit 5-8-07

SIGNATURE

DATE: