

U.S. PUBLIC LAND SURVEY MONUMENT RECORD - GRANT COUNTY, WI

Section 9, Town 3 North Range 1 West, Town of Platteville (a)

NOTE: This form is intended and designed to fulfill all requirements of the Wisconsin Administrative Code Chapter A-E 7.08, U.S. Public Land Survey Monument Record (3) (a) (b) (c) (d) (e) (f) (g) (h) (i).

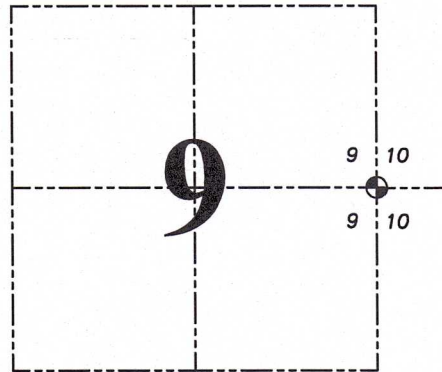
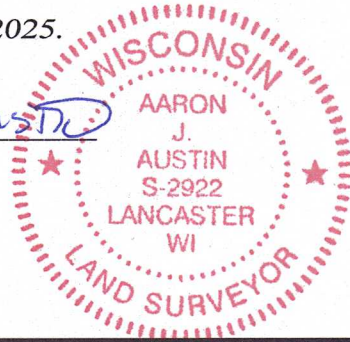
CERTIFICATE: (i)

I, Aaron J. Austin, Wisconsin Professional Land Surveyor, do hereby certify that the corner location on this record was determined by me and/or under my direct supervision and that this U.S. Public Land Survey Monument Record is correct and complete to the best of my knowledge and belief.

Dated this 23rd day of April, 2025.

*Aaron J. Austin*

Aaron J. Austin, S-2922



⊕ = CORNER LOCATION

Grant County Coordinates:  
NAD 83 (2011)  
Northing: 487,218.23  
Easting: 879,440.88

HISTORY OF CORNER ESTABLISHMENT:

Original corner was set in 1833 by Robert Clark.  
Geo McFall set a Stone on a Survey filed in Book C, Page 269 dated 1874.  
Mathew Janiak found a Stone and prepared a Survey Monument Record dated 5-16-1980.  
Many Surveys show a Stone Monument at this corner.

DESCRIPTION OF CORNER EVIDENCE FOUND: (b) (f) (g) (h)

I found the Stone with a chiseled "X". I found four witness corners and verified the Monument's location with G.P.S. and E.D.M. methods.

DESCRIPTION OF CORNER AND WITNESS MONUMENTS, references and accessories used to perpetuate the original or re-established location of this corner. (c) (d) (e)

Witnesses to corner location Owen Austin, Tanner Austin.  
Drawn by: Owen Austin.

SKETCH:

LEGEND

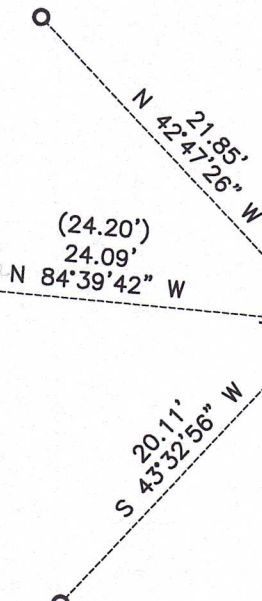
- ⊕ Section Corner—as designated
- 3/4" rebar found
- ( ) Recorded as
- ☼ Existing tree



CHURCH  
YARD



CHURCH  
YARD

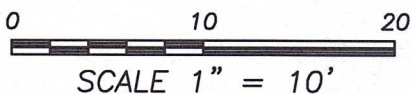


YARD

EAST 1/4 CORNER  
SECTION 9, T3N R1W  
Stone with chiseled "X"  
found.

spike found  
in tree

YARD



MAY 25 1990

RL

# GRANT COUNTY

## GOVERNMENT CORNER RECORD

EAST 1/4 CORNER, SECTION 9, TOWNSHIP 3 NORTH, RANGE 1 EAST - WEST,  
TOWN, ~~CITY OR VILLAGE~~ OF PLATTEVILLE, RICHLAND CO.

TYPE OF MONUMENT: STONE W/CHISELED CROSS ELEVATION - M.S.L. DATUM \_\_\_\_\_

STATE PLANE COORDINATES: N \_\_\_\_\_

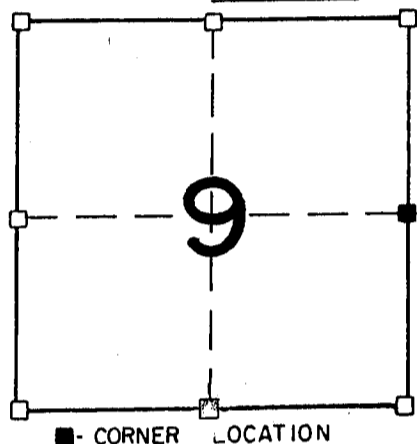
WISCONSIN SOUTH ZONE E \_\_\_\_\_

WITNESSES TO CORNER LOCATION

SEAN M. WALSH

PATRICK J. DEDERICH

SECTION 9, T 3 N, R 1 EW  
TOWN OF PLATTEVILLE

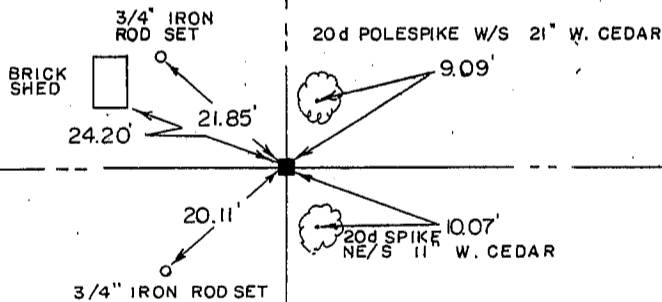


NORTH

TIE SKETCH  
(SHOW ALL HELPFUL FEATURES)

FIELD

VACANT LOT



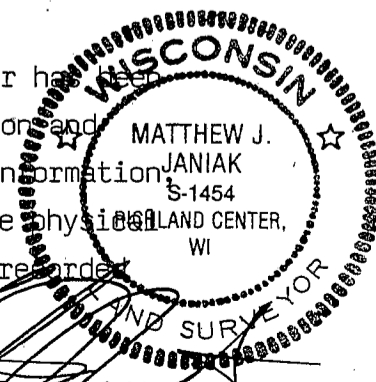
CHURCH LOT

YARD

SURVEYOR'S CERTIFICATE  
STATE OF WISCONSIN)  
RICHLAND COUNTY )SS

SEAL S - 1454

I, Matthew J. Janiak, DO HEREBY CERTIFY THAT the above corner has been  
perpetuated in accordance with the information contained hereon and  
that this information is correct and true to the best of my information,  
knowledge and belief. This location was accepted based on the physical  
location of the stone and the fact that it has been used and regarded  
as the corner since 1874.



DATED THIS 16th DAY OF MAY, 19 90

REGISTERED LAND SURVEYOR

CORNER CODE

137