

31036

# U.S. PUBLIC LAND SURVEY MONUMENT RECORD - GRANT COUNTY, WI

Section 8, Town 3 North Range 1 West, Town of Platteville (a)

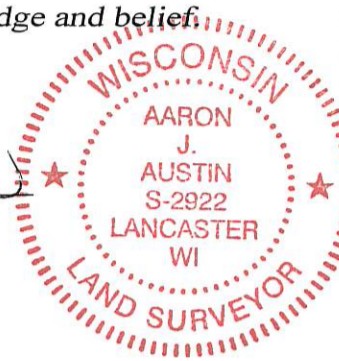
NOTE: This form is intended and designed to fulfill all requirements of the Wisconsin Administrative Code Chapter A-E 7.08, U.S. Public Land Survey Monument Record (3) (a) (b) (c) (d) (e) (f) (g) (h) (i).

CERTIFICATE: (i)

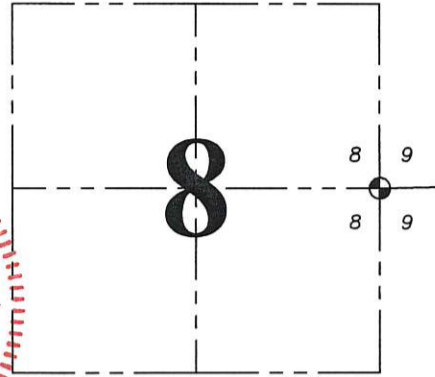
I, Aaron J. Austin, Wisconsin Professional Land Surveyor, do hereby certify that the corner location on this record was determined by me and/or under my direct supervision and that this U.S. Public Land Survey Monument Record is correct and complete to the best of my knowledge and belief.

Dated this 22nd day of May, 2018.

*Aaron J. Austin*  
Aaron J. Austin, S-2922



Grant County I.D. No. 36



☉ = CORNER LOCATION

### HISTORY OF CORNER ESTABLISHMENT:

Robert Clark set the original corner in 1833.  
Stuntz tied to the original corner in 1845 on a Survey filed in Book A, Page 301.  
Stuntz tied to the corner in 1845 on a Survey filed in Book A, Page 305.  
McFall tied to the corner in 1874 on a Survey filed in Book C, Page 269.

### DESCRIPTION OF CORNER EVIDENCE FOUND: (b) (f) (g) (h)

I probed for the recorded Stone as mentioned in Book C, Page 269. I was unable to recover the stone. I did however find a 1 1/2" iron pipe with old survey ribbon on it, in the East-West fence line. This pipe matches well to a fence/deed line located 31 rods West of the corner. The pipe also matches well with the occupied fence corner at the Northeast corner Northeast corner of the NW 1/4 of the SW 1/4. I did look for the recorded stone at this 40 corner, which also was not recovered. The dimensions Book A, Page 305 and Book C, Page 269 have a difference of 0.91 chains. This maybe due to a bluff of the Little Platte River being located to the East of this corner. I accepted the found iron pipe as the best evidence of the corner.

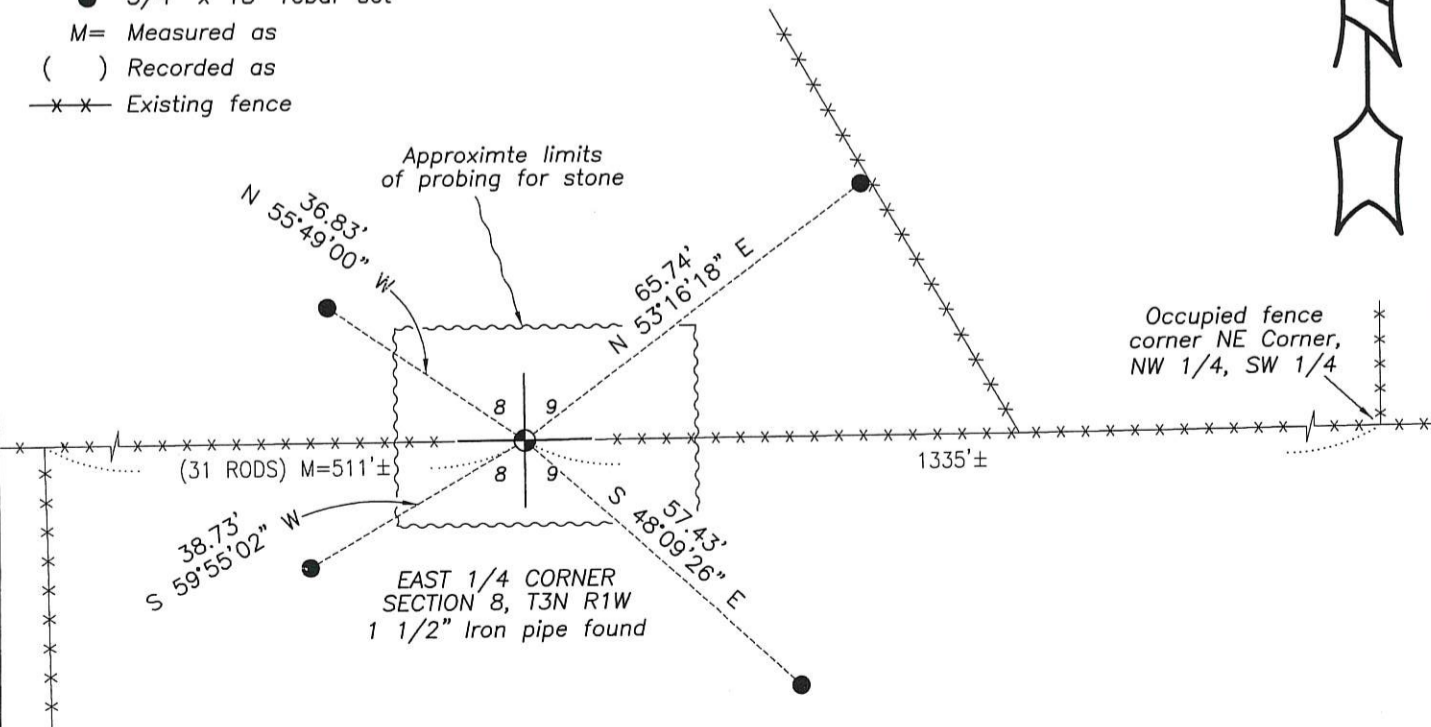
### DESCRIPTION OF CORNER AND WITNESS MONUMENTS , references and accessories used to perpetuate the original or re-established location of this corner. (c) (d) (e)

Witnesses to corner location Shane Austin.

SKETCH:

## LEGEND

- ☉ Section Corner—as designated
- 3/4" x 18" rebar set
- M= Measured as
- ( ) Recorded as
- x-x- Existing fence



0 30 60

SCALE 1" = 30'