

GRANT COUNTY CERTIFIED LAND CORNER

CORNER NUMBER 34

CERTIFICATE:

I, Larry L. Austin, do hereby certify that on the 14th day of November, 2000, I found evidence of the West 1/4 corner of Section 7, Town 3 North, Range 1 West, of the 4th Principal Meridian, and I re-established said corner according to the Wisconsin statutes as shown and described hereon.

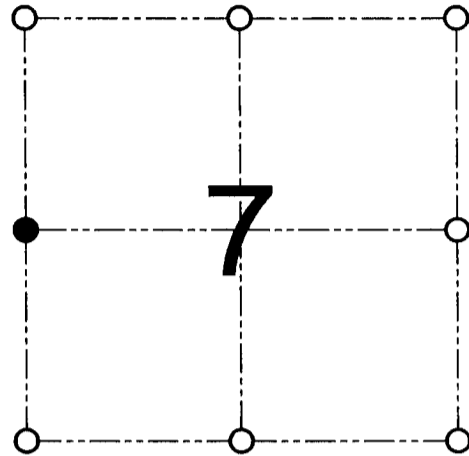
Dated this 12th day of December, 2000

Larry L. Austin

Larry L. Austin S-1903



SEAL



● = CORNER LOCATION

WEST 1/4 CORNER OF
SECTION 7, T 3 N R 1 W
TOWN OF PLATTEVILLE

HISTORY OF ORIGINAL CORNER ESTABLISHMENT:

Corner was never originally set.
No other record of the corner was found.

DESCRIPTION OF CORNER EVIDENCE FOUND:

I found a fence East and accepted it for Northing. Easting is online between the East 1/4 corner and the Northeast corner of Section 12. Verified this location using EDM & GPS methods.

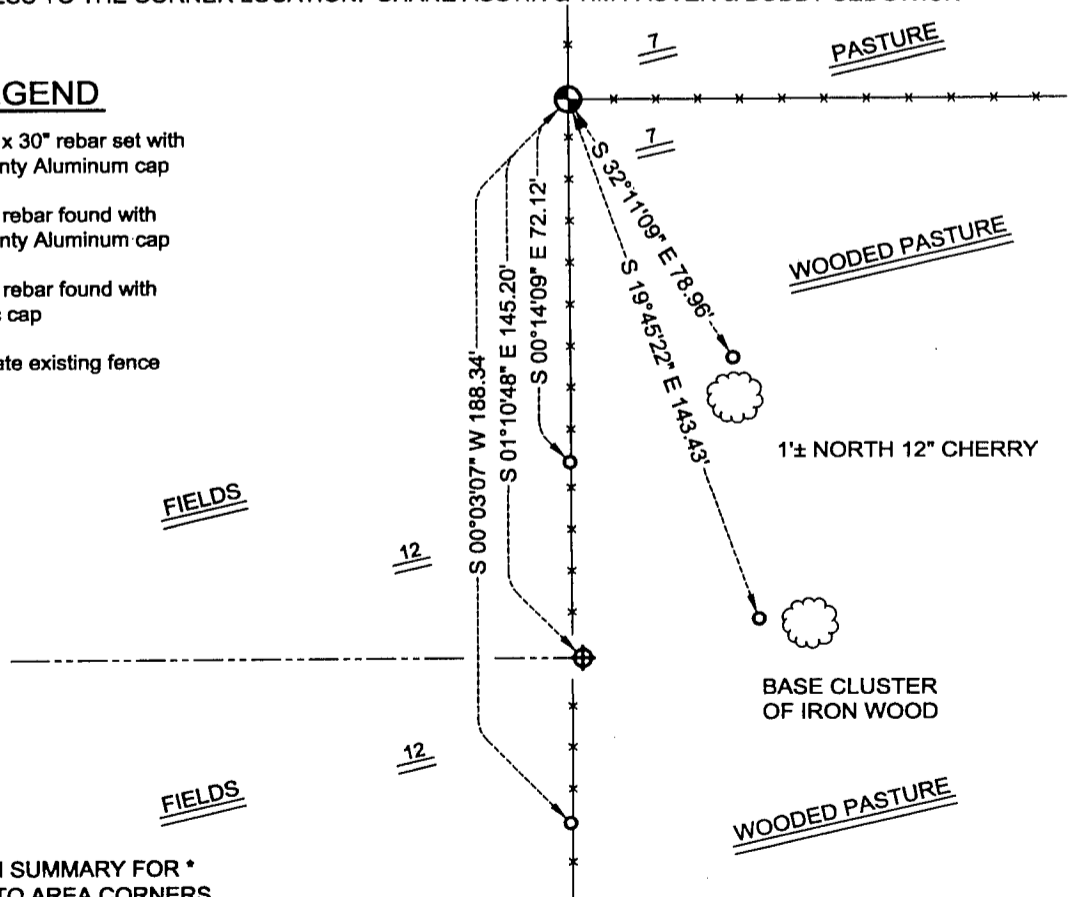
DESCRIPTION OF CORNER AND WITNESS MONUMENTS, references and accessories used to perpetuate the original or re-established location of this corner

WITNESS TO THE CORNER LOCATION: SHANE AUSTIN & TIM FAUVER & BOBBY SEDGWICK

SKETCH:

LEGEND

- ◆ Number 8 x 30" rebar set with Grant County Aluminum cap
- ⊕ Number 8 rebar found with Grant County Aluminum cap
- Number 4 rebar found with red plastic cap
- *— Approximate existing fence



* SEE SECTION SUMMARY FOR *
RELATIONSHIP TO AREA CORNERS

AUSTIN ENGINEERING, LLC
4211 HWY 81 E, LANCASTER, WI 53813
PHONE 608-723-6363 FAX 608-723-6702

FIELDBOOK: SDR33, 2001
G:\T3NR1W\18
C:\SC14\SWA\TIE\T3NR1W\34

DRAWN BY: SW AUSTIN
APPROVED: LL AUSTIN
CREW: BS - SB - SA - TF

JUN 14 2001