

# GRANT COUNTY CERTIFIED LAND CORNER

CORNER NUMBER 32

**CERTIFICATE:**

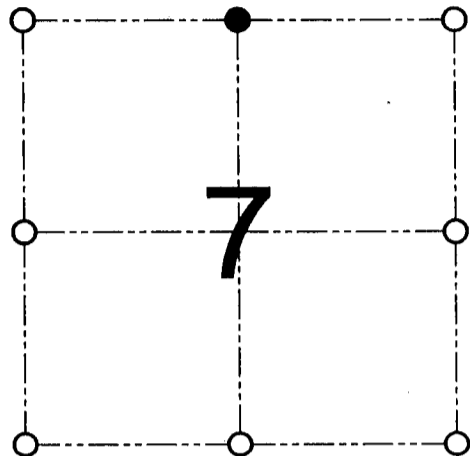
I, Larry L. Austin, do hereby certify that on the 14th day of November, 2000, I found evidence of the North 1/4 corner of Section 7, Town 3 North, Range 1 West, of the 4th Principal Meridian, and I re-established said corner according to the Wisconsin statutes as shown and described hereon.

Dated this 12th day of December, 2000

*Larry L. Austin*  
Larry L. Austin S-1903



SEAL



● = CORNER LOCATION

NORTH 1/4 CORNER OF  
SECTION 7, T 3 N R 1 W  
TOWN OF PLATTEVILLE

**HISTORY OF ORIGINAL CORNER ESTABLISHMENT:**

Corner was originally set in 1833 by Robert Clark.  
In 1982 Larry Schmit tied to the North-South 1/4 line of Section 7.

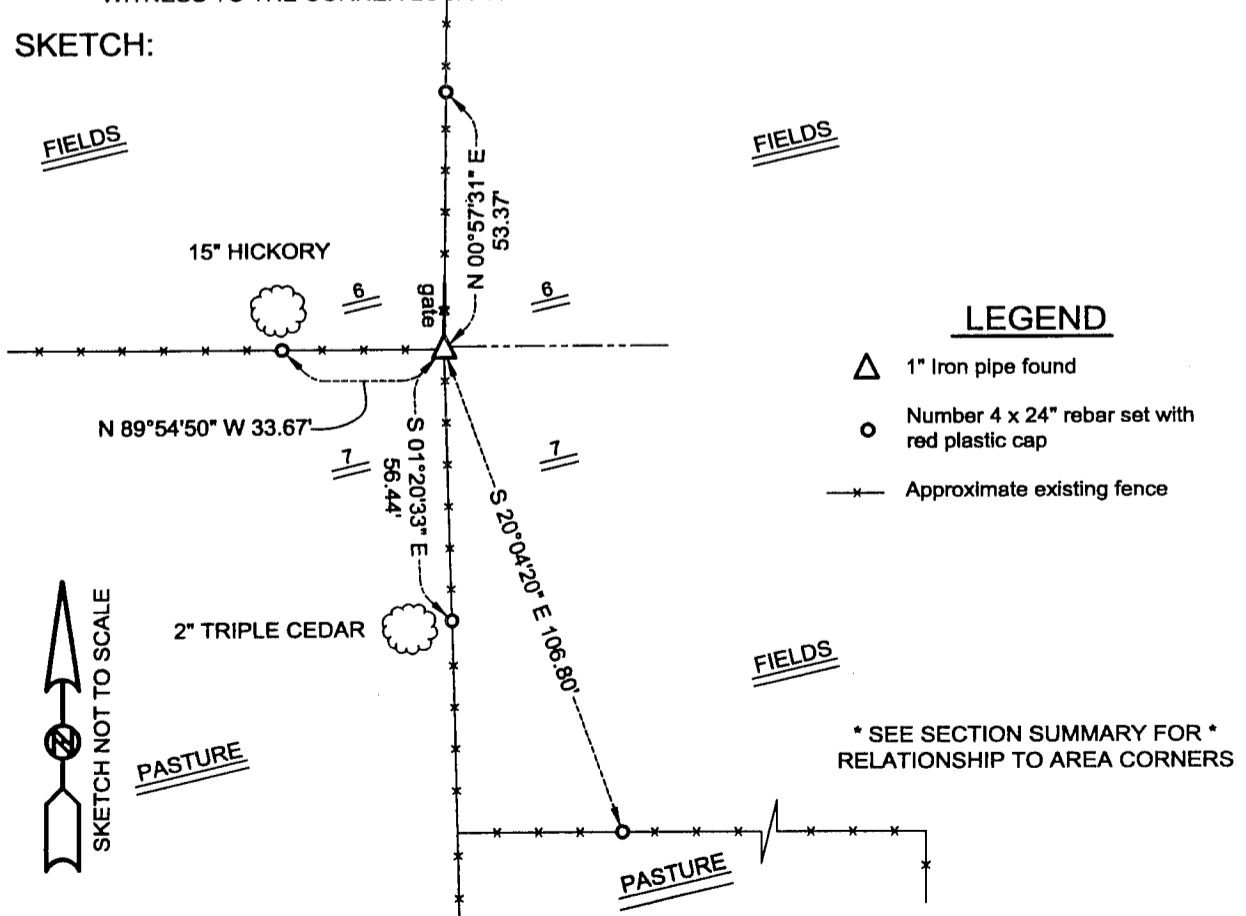
**DESCRIPTION OF CORNER EVIDENCE FOUND:**

I found a 1" iron pipe at an occupied fence corner. I assume the pipe was set by Larry Schmit. I accepted it's location after an EDM & GPS traverse of the area.

**DESCRIPTION OF CORNER AND WITNESS MONUMENTS, references and accessories used to perpetuate the original or re-established location of this corner**

WITNESS TO THE CORNER LOCATION: SHANE AUSTIN & TIM FAUVER & BOBBY SEDGWICK

**SKETCH:**



**LEGEND**

- △ 1" Iron pipe found
- Number 4 x 24" rebar set with red plastic cap
- x— Approximate existing fence

\* SEE SECTION SUMMARY FOR \*  
RELATIONSHIP TO AREA CORNERS

**AUSTIN ENGINEERING, LLC**  
4211 HWY 81 E, LANCASTER, WI 53813  
PHONE 608-723-6363 FAX 608-723-6702

FIELDBOOK: SDR33, 2001  
G:\T3NR1W\18  
C:\SC14\SWA\TIE\T3NR1W\32

DRAWN BY: SW AUSTIN  
APPROVED: LL AUSTIN  
CREW: BS - SB - SA - TF

JUN 14 2001