


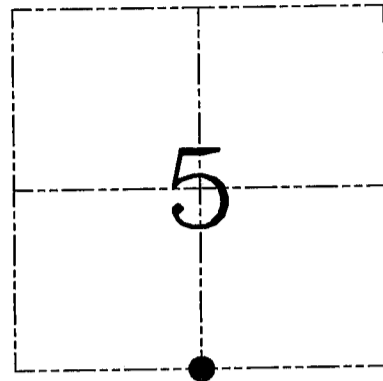
**U.S. PUBLIC LAND SURVEY MONUMENT RECORD – GRANT COUNTY, WI**  
**Section 5, Town 3 North Range 1 West, Town of Platteville**

CERTIFICATE

I, Larry L. Austin, do hereby certify that the corner location on this record was determined by me and/or under my direct supervision and that this U.S. public land survey monument record is correct and complete to the best of my knowledge and belief.

Dated this 10th day of March 2005

*Larry L. Austin*  
 Larry L. Austin S-1903

● = CORNER LOCATION

HISTORY OF CORNER ESTABLISHMENT

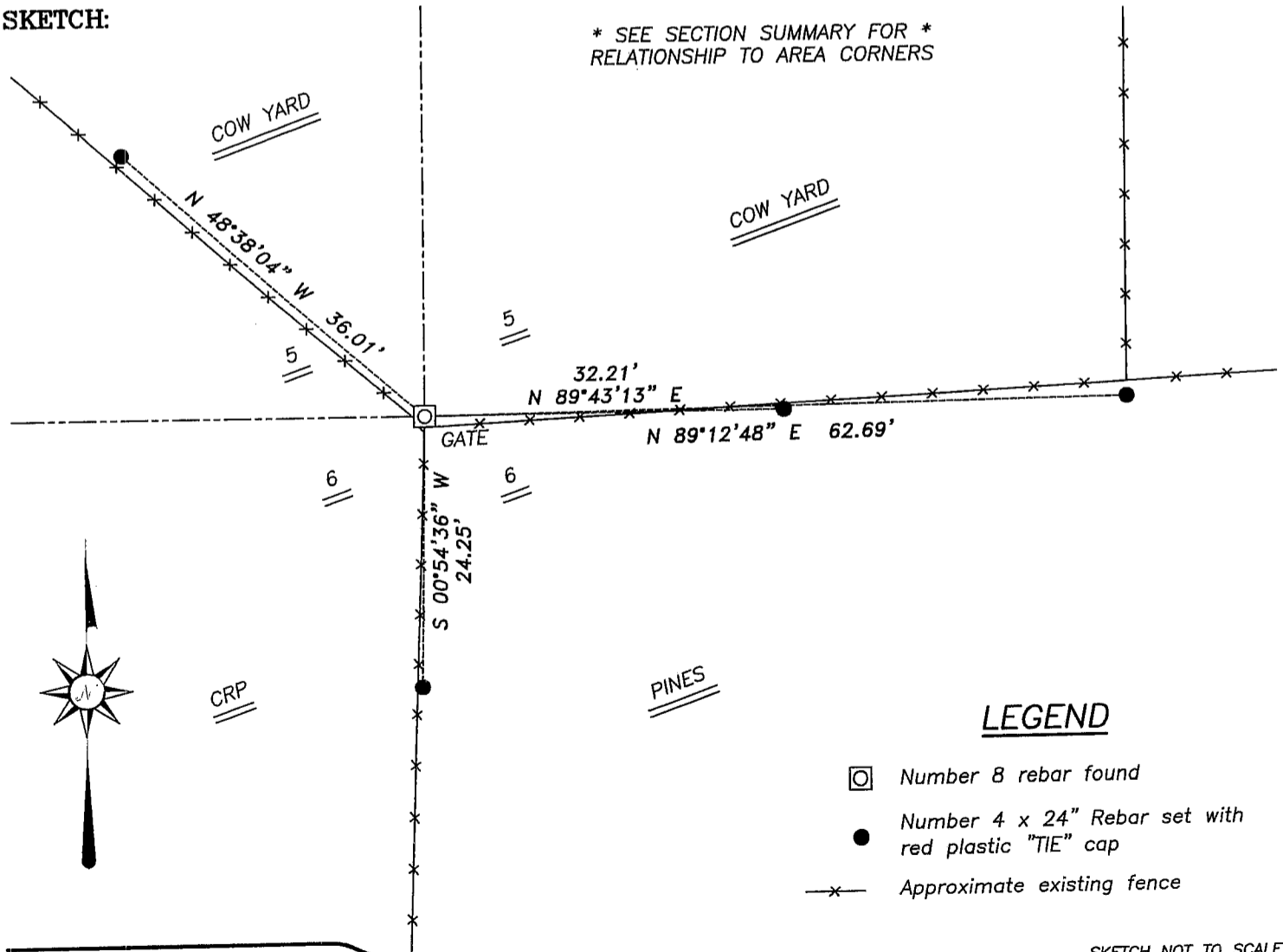
Corner was originally set in 1833 by Clark. In 1891 Sampson tied to the corner. In 1982 Genske set an iron bar at this location.

DESCRIPTION OF CORNER EVIDENCE FOUND

I found the existing iron bar at an occupied fence corner. I accepted it's location and set new ties as shown below. Verified this location using EDM & GPS methods.

DESCRIPTION OF CORNER AND WITNESS MONUMENTS, references and accessories used to perpetuate the original or re-established location of this corner. Witnesses to corner location Bobby Sedgwick & Shelby Blindert & Brad Digman

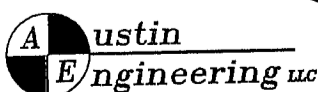
**SKETCH:**



LEGEND

- ◻ Number 8 rebar found
- Number 4 x 24" Rebar set with red plastic "TIE" cap
- x— Approximate existing fence

SKETCH NOT TO SCALE



4211 HWY 81 E, LANCASTER, WI 53813  
 PHONE 608-723-6363 FAX 608-723-6702

JOB NUMBER 05S023  
 FIELDBOOK: TDSR, 2502  
 G:\T4NR1W\T4N  
 H:\TIE\T3NR1W\30

DRAWN BY: SW AUSTIN  
 APPROVED: LL AUSTIN

Sec. 8, T 3<sup>N</sup>, R 1<sup>W</sup>

Township of Platteville

CERTIFIED LAND CORNER RESTORATION

State of Wisconsin

County of Grant

ss.

I Terrance L. Genske do hereby certify that on the 17th day of May, 1982, I found evidence of the North 1/4 corner of Section 8, Township 3 North, Range 1 West, Fourth Principal Meridian, as described hereon; and that from this evidence I established a new monument and accessories as described hereon to perpetuate the original location of this corner:

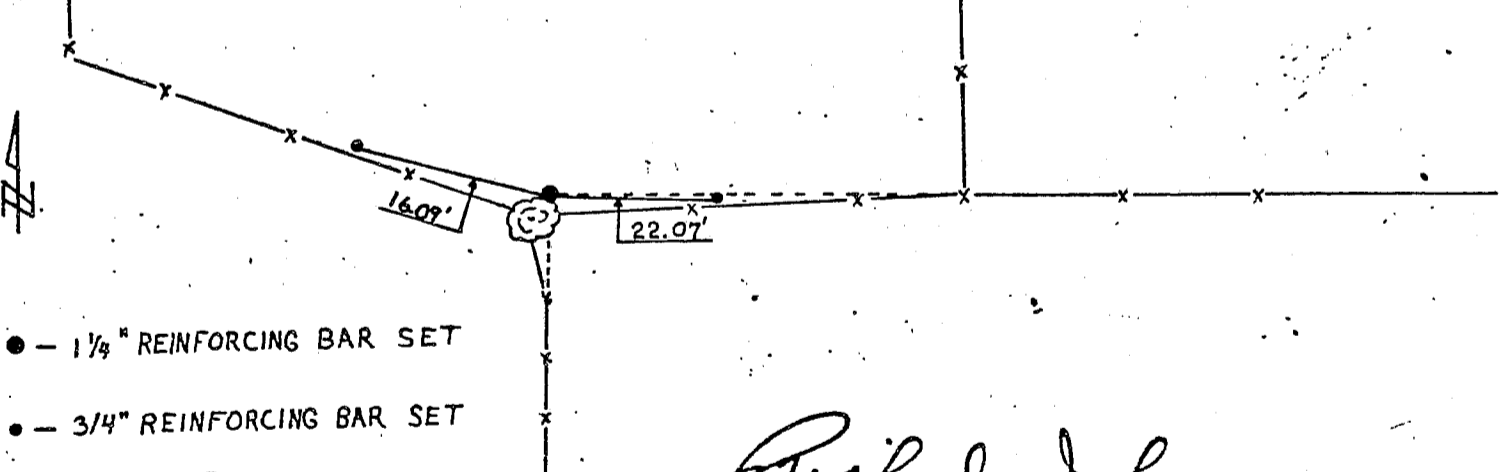
Description of original monument and accessories and subsequent restorations:

Original corner set on March 30, 1832, by Robert Clark
Wooden Post Set
White Oak 20 N57 1/4 W 39 links
White Oak 30 S59 W 47 links
No subsequent restoration on record

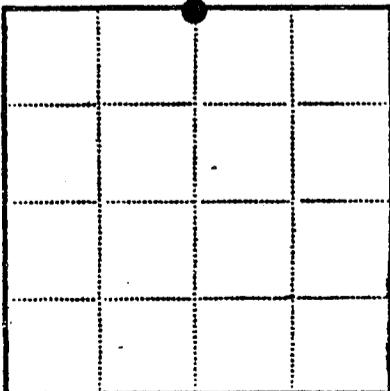
Description of corner evidence found:

Fence line of ancient nature from South intersects fence line from East at a 24" dead tree. Local landowner's claim that the intersection has been held as the corner location for as long as they have lived there. Checked well with occupation evidence and resurvey distances from the West and North.

Description of monument and accessories I established to perpetuate the original location of this corner:



- 1/4" REINFORCING BAR SET
3/4" REINFORCING BAR SET



- Corner monument restored
[ ]

Resident witnesses Richard Johnson

Dated at Platteville, Wisconsin, this 17th day of May 1982.

Signature Terrance L. Genske Title Registered Land Surveyor
(County Surveyor, Registered Land Surveyor, or other duly authorized official)

Surveyors Registration No. 1443

Office of County of
I hereby certify that the within instrument was filed in this office for record on the day of 19, and was filed in Book No. Page No. of County Records.

Signature Title

Township 3 North, Range 1 West, Section 8, Index No., Page No.

MAY 24 1982