

MAY 25 1998

GRANT COUNTY

GOVERNMENT CORNER RECORD

S.W. CORNER, SECTION 4, TOWNSHIP 3 NORTH, RANGE 1 ~~EAST~~ - WEST,
TOWN, CITY OR VILLAGE OF PLATTEVILLE, RICHLAND CO.

TYPE OF MONUMENT: 3/4" X 24" IRON ROD SET ELEVATION - M.S.L. DATUM _____

STATE PLANE COORDINATES: N _____

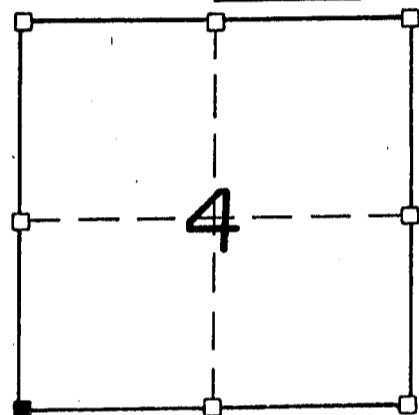
WISCONSIN SOUTH ZONE E _____

WITNESSES TO CORNER LOCATION

SEAN M. WALSH

PATRICK J. DEDERICH

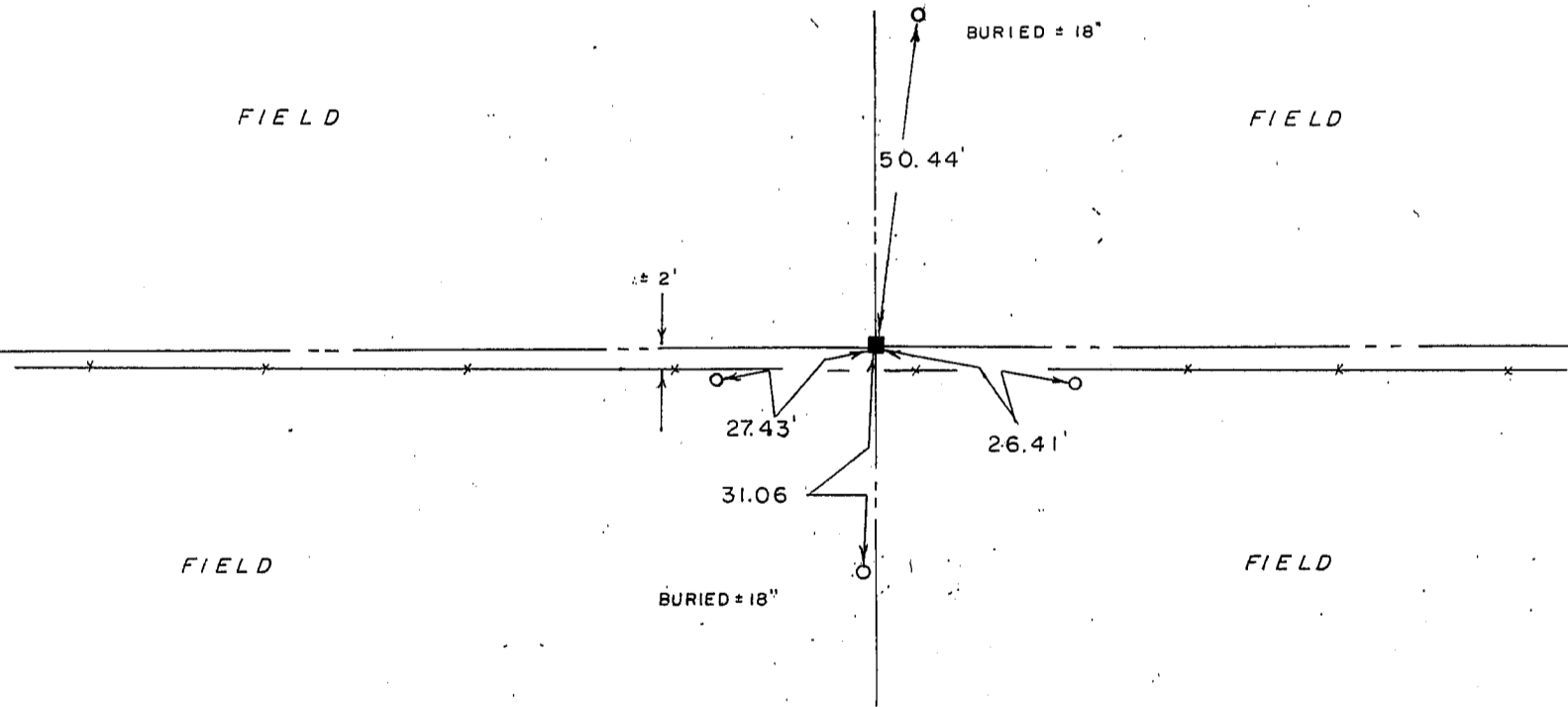
SECTION 4, T 3 N, R 1 ~~EW~~
TOWN OF PLATTEVILLE



■ - CORNER LOCATION
○ - 3/4" IRON ROD SET



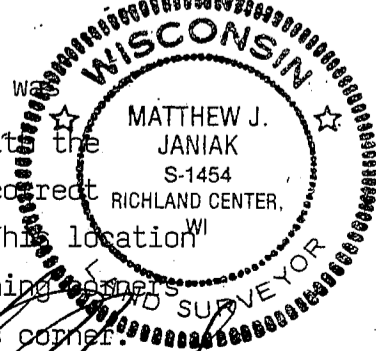
TIE SKETCH
(SHOW ALL HELPFUL FEATURES)



SURVEYOR'S CERTIFICATE
STATE OF WISCONSIN)
RICHLAND COUNTY) SS

SEAL S- 1454

I, Matthew J. Janiak, DO HEREBY CERTIFY THAT the above corner was
established under my direction and supervision in accordance with the
information contained hereon and that this information is correct
and true to the best of my information, knowledge and belief. This location
was established at proportionate distances from the next adjoining corners
after finding no other evidence indicating the location of this corner.



DATED THIS 16TH DAY OF MAY, 19 98

Matthew J. Janiak
REGISTERED LAND SURVEYOR

CORNER CODE