

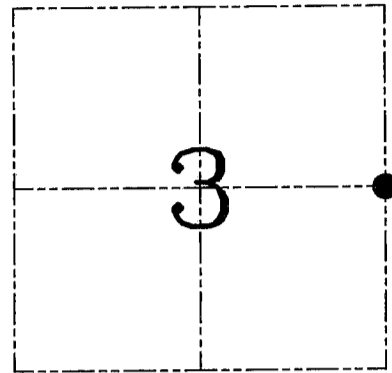
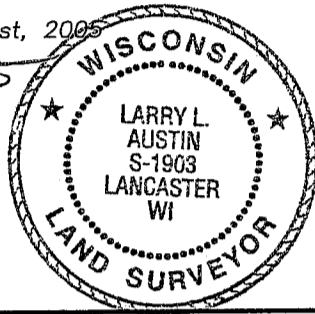
U.S. PUBLIC LAND SURVEY MONUMENT RECORD – GRANT COUNTY, WI
Section 3, Town 3 North Range 1 West, Town of Platteville

CERTIFICATE

I, Larry L. Austin, do hereby certify that the corner location on this record was determined by me and/or under my direct supervision and that this U.S. public land survey monument record is correct and complete to the best of my knowledge and belief.

Dated this 10th day of August, 2005

Larry L. Austin
 Larry L. Austin S-1903



● = CORNER LOCATION

HISTORY OF CORNER ESTABLISHMENT

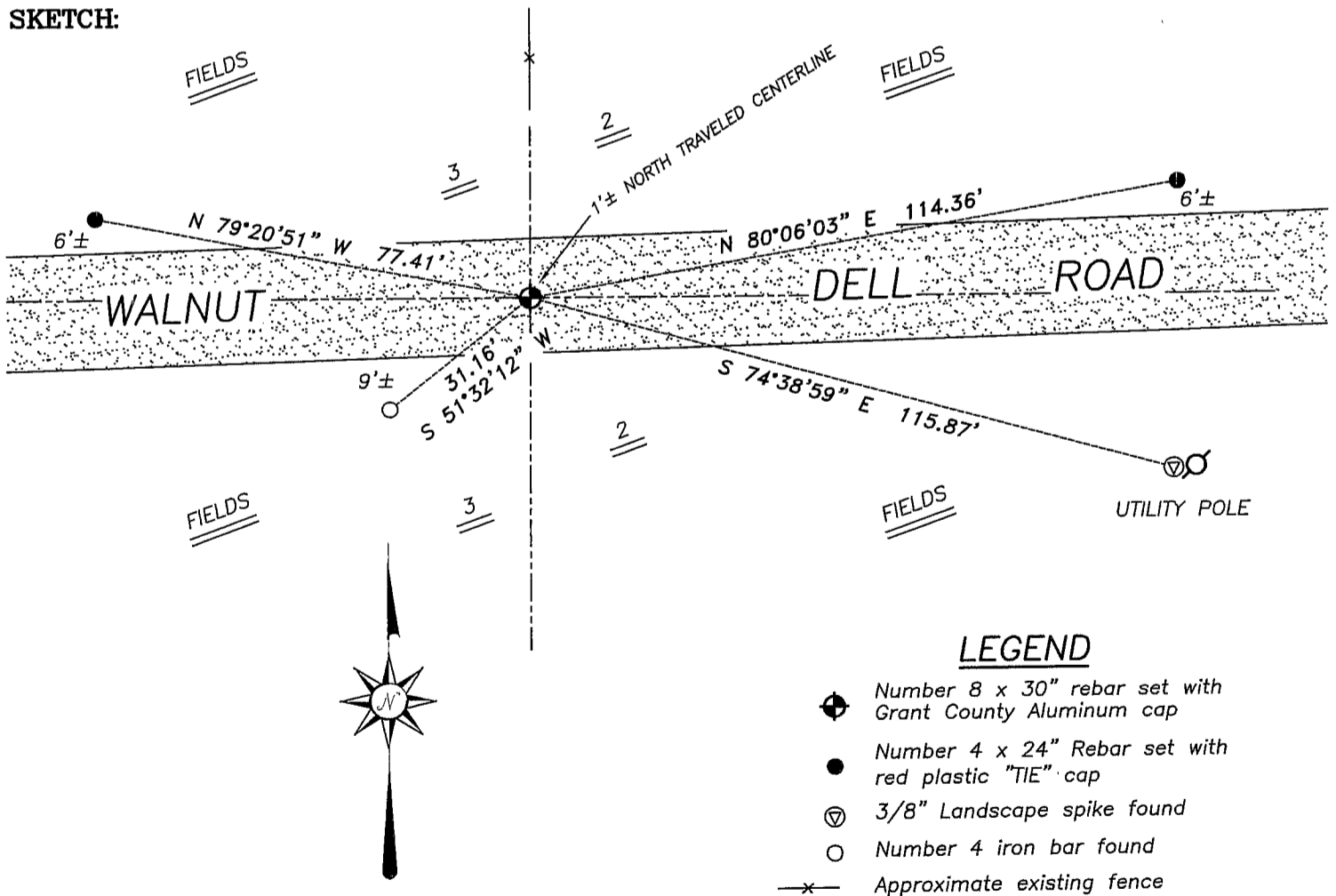
Corner was originally set in 1833 by Clark. In 1995 I set a Railroad Spike at this location. No other record of the corner was found.

DESCRIPTION OF CORNER EVIDENCE FOUND

I found two ties but not the Railroad Spike. I reset a monument at the corner based on two ties. I set two new ties and verified this location using EDM & GPS methods.

DESCRIPTION OF CORNER AND WITNESS MONUMENTS, references and accessories used to perpetuate the original or re-established location of this corner. Witnesses to corner location Bobby Sedgwick & Brad Digman & Shane Austin

SKETCH:



SKETCH NOT TO SCALE



Austin Engineering LLC

4211 HWY 81 E, LANCASTER, WI 53813
 PHONE 608-723-6363 FAX 608-723-6702

JOB NUMBER 05S050
 FIELDBOOK: TDSR, 2512
 G:\GRANTDOT\T3NR1W
 H:\TIE\T3NR1W\18

DRAWN BY: SW AUSTIN
 APPROVED: LL AUSTIN

GRANT COUNTY

Survey Monument Record

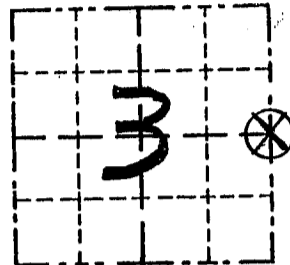
TYPE OF MONUMENT RAILROAD SPIKE SET
 STATE PLANE COORDINATES: N _____
 E _____
 ELEVATION — M.S.L. DATUM: _____
 THETA ANGLE: _____
 FIELD BOOK: 93-17
 PAGE _____

CORNER NO. 18
 SECTION 3
 TOWN 3 N
 RANGE 1 W

BASIS FOR MONUMENT LOCATION

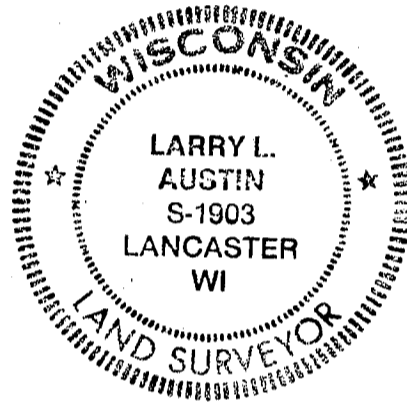
(Use reverse side if necessary)

Show info such as: History of corner, with reference to Vol. and pg., dates, surveyor; exact description of monument replaced; if location computed, by taped or EDM traverse; landowner, remarks, etc.



LOCATION
(Indicated by ⊗)

SEAL:



No RECORD OF CORNER FOUND
SINCE ORIGINAL SURVEYS; CORNER
WAS SET OCCUPIED LOCATION
AND VERIFIED BY EDM TRAVERSE.

CERTIFIED CORRECT

Larry L. Austin
 Registered Land Surveyor

DATE: 1-11-95

TIE SKETCH

Show at least three (3) ties and monument

LEGEND

- RAILROAD SPIKE SET AS CORNER
- 3/8" x 12" STEEL SPIKE
- △ 1/2" x 24" REBAR
- ⊗ POWER POLE
- CONCRETE POST

