

MAR 24 2000

GRANT COUNTY CERTIFIED LAND CORNER

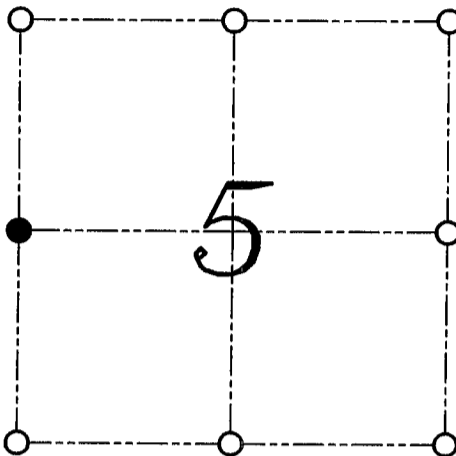
CERTIFICATE:

I, Larry L. Austin, do hereby certify that on the 14th day of July, 1999, I found evidence of the West 1/4 corner of Section 05, Town 3 North, Range 1 West, of the Fourth Principal Meridian, and I re-established said corner according to the Wisconsin Statutes as shown and described hereon.

DATED THIS 3rd DAY OF FEBRUARY, 2000

Larry L. Austin
Larry L. Austin S-1903

CORNER NUMBER 15



● = CORNER LOCATION

WEST 1/4 CORNER OF
SECTION 5, T 3 N R 1 W
TOWN OF PLATTEVILLE



HISTORY OF ORIGINAL CORNER ESTABLISHMENT:

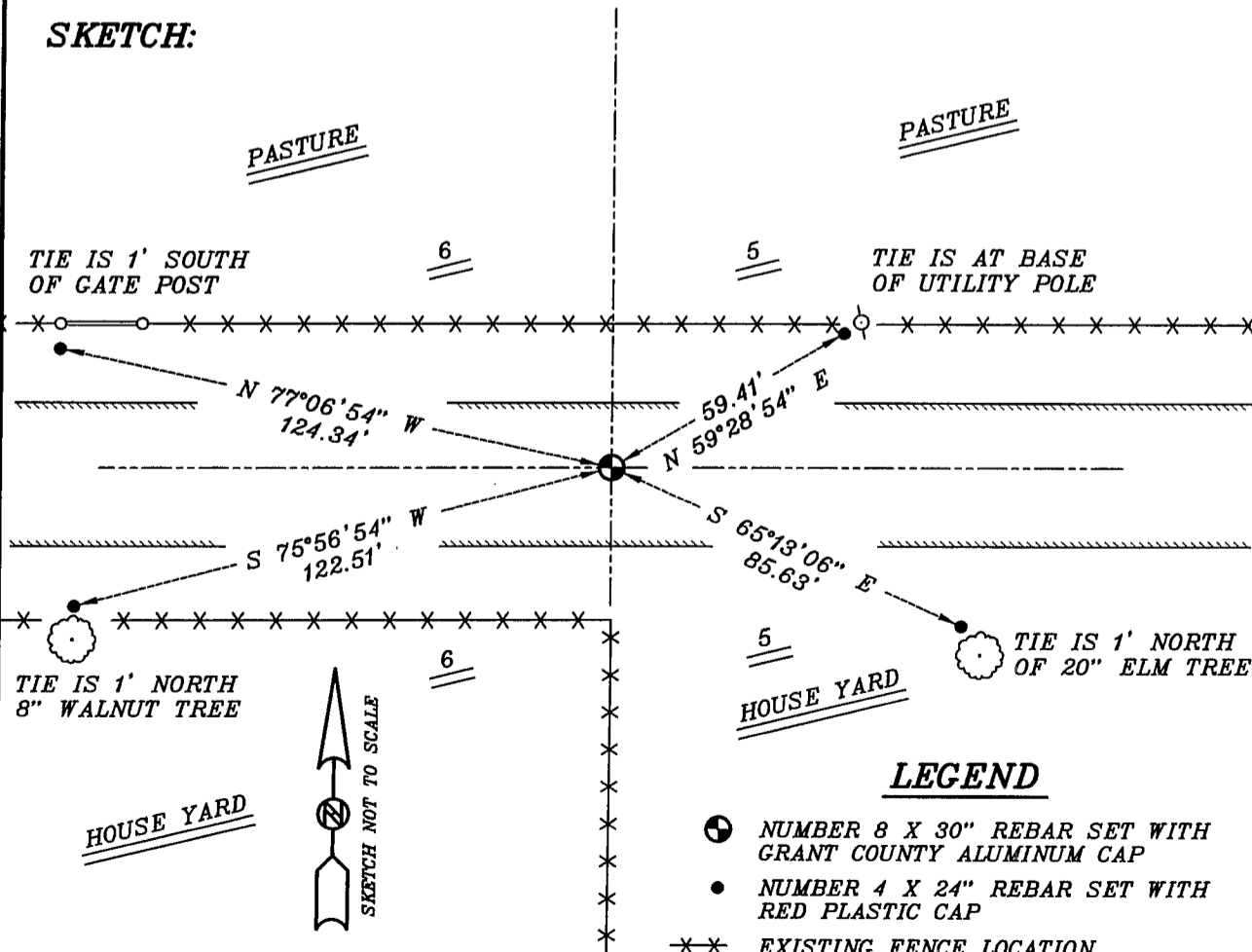
Corner was originally set in 1833 by Robert Clark. In 1891 Sampson tied to the corner with no mention of monument. Stuntz also tied to the corner. In 1988 I tied to the corner.

DESCRIPTION OF CORNER EVIDENCE FOUND:

I didn't find the iron bar set in 1988. I retraced the location by evidence of the survey. I accepted this location after an E.D.M. and G.P.S. traverse of the area.

DESCRIPTION OF CORNER AND WITNESS MONUMENTS, references and accessories used to perpetuate the original or re-established location of this corner
WITNESS TO THE CORNER LOCATION: BOBBY SEDGWICK ; SHELBY BLINDERT

SKETCH:



LEGEND

- NUMBER 8 X 30" REBAR SET WITH GRANT COUNTY ALUMINUM CAP
- NUMBER 4 X 24" REBAR SET WITH RED PLASTIC CAP
- ** EXISTING FENCE LOCATION