

MAY 25 1990

RE

GRANT COUNTY

GOVERNMENT CORNER RECORD

NORTHWEST CORNER, SECTION 4, TOWNSHIP 3 NORTH, RANGE 1 EAST - WEST,
TOWN, CITY OR VILLAGE OF PLATTEVILLE, RICHLAND CO.

TYPE OF MONUMENT: 1" IRON PIPE FOUND ELEVATION - M.S.L. DATUM _____

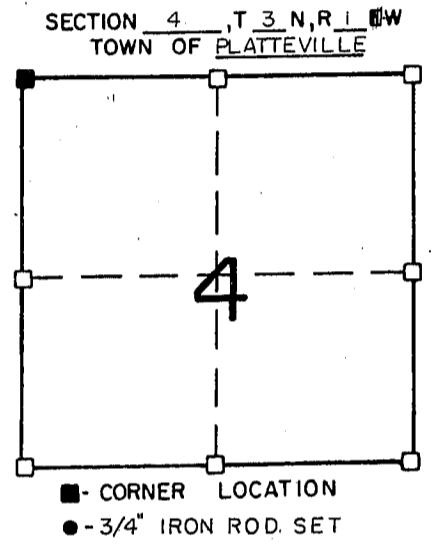
STATE PLANE COORDINATES: N _____

WISCONSIN SOUTH ZONE E _____

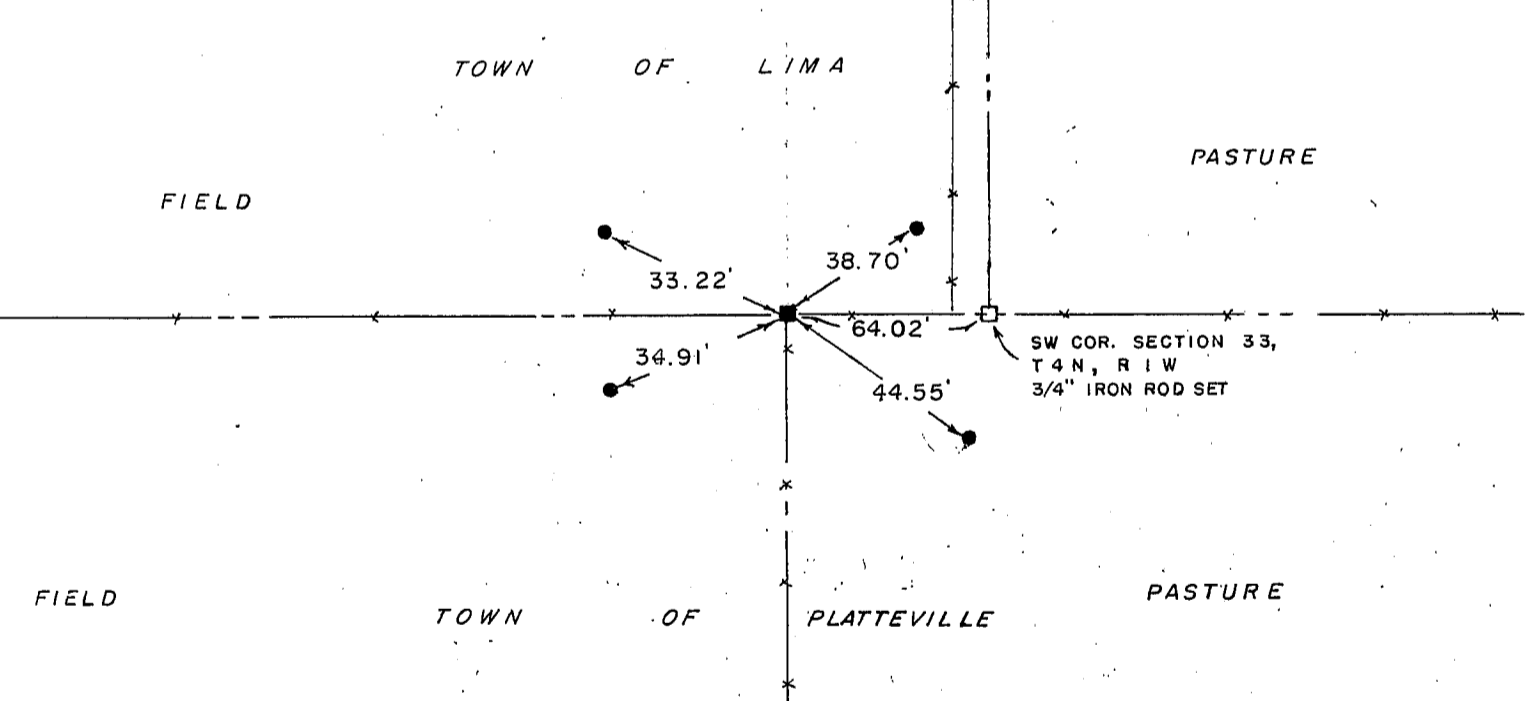
WITNESSES TO CORNER LOCATION

SEAN M. WALSH

PATRICK J. DEDERICH



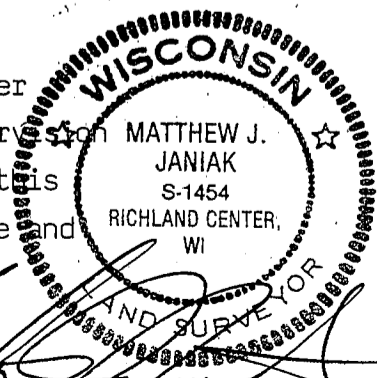
TIE SKETCH
(SHOW ALL HELPFUL FEATURES)



SURVEYOR'S CERTIFICATE
STATE OF WISCONSIN)
RICHLAND COUNTY) SS

SEAL S-1454

I, Matthew J. Janiak, DO HEREBY CERTIFY THAT the above corner
has been accepted and perpetuated under my direction and supervision
in accordance with the information contained hereon and that this
information is correct to the best of my information knowledge and
belief.



DATED THIS 16TH DAY OF MAY, 19 90

REGISTERED LAND SURVEYOR

CORNER CODE

