

GRANT COUNTY

Survey Monument Record

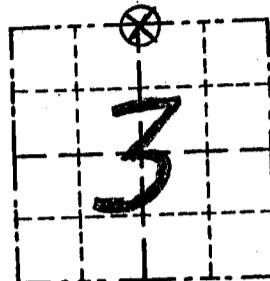
TYPE OF MONUMENT ALUM. MONUMENT
 STATE PLANE COORDINATES: N _____
 E _____
 ELEVATION — M.S.L. DATUM: _____
 THETA ANGLE: _____
 FIELD BOOK: 93-17
 PAGE _____

CORNER NO. 6
 SECTION 3
 TOWN 3 N
 RANGE 1 W

BASIS FOR MONUMENT LOCATION

(Use reverse side if necessary)

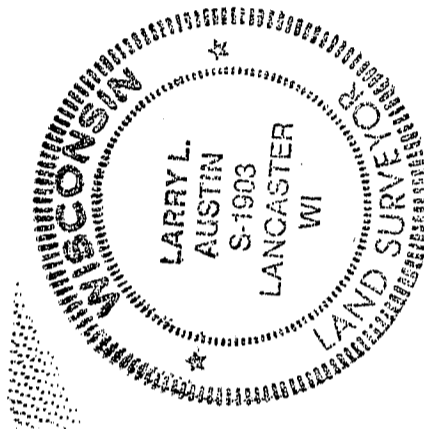
Show info such as: History of corner, with reference to Vol. and pg., dates, surveyor; exact description of monument replaced; if location computed, by taped or EDM traverse; landowner, remarks, etc.



LOCATION
(Indicated by 'X')

SEAL:

NO RECORD OF THE CORNER SINCE THE ORIGINAL SURVEYS; I ACCEPTED OCCUPIED LOCATION & SET AN ALUMINUM MONUMENT AFTER EDM TRAVERSE OF THE AREA.



CERTIFIED CORRECT

Larry L. Austin
 Registered Land Surveyor

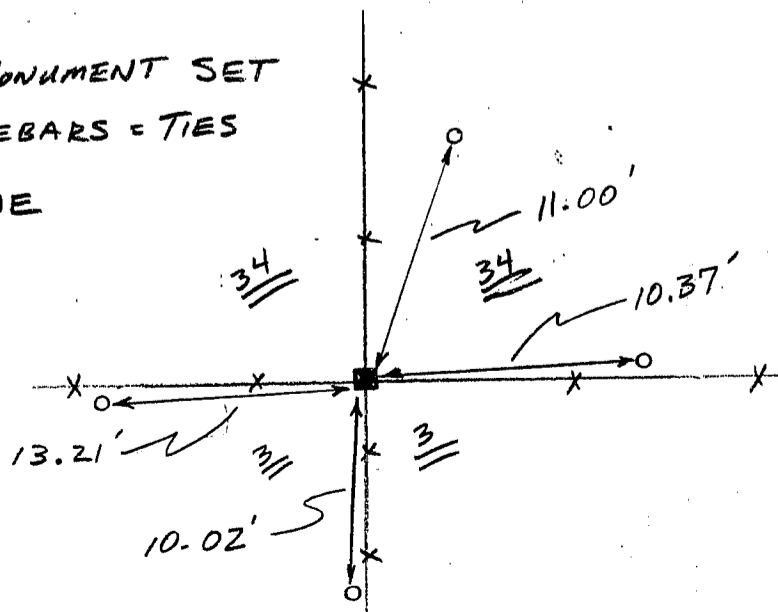
DATE: 1-11-95

TIE SKETCH

Show at least three (3) ties and monument

LEGEND

- ALUMINUM MONUMENT SET
- 1/2" x 18" REBARS = TIES
- X — X — FENCELINE



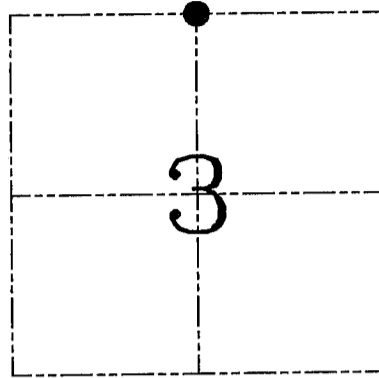
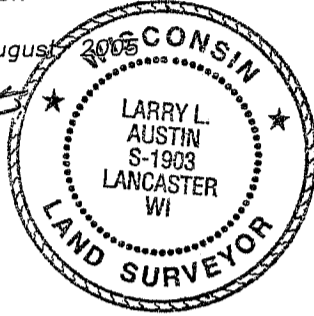
U.S. PUBLIC LAND SURVEY MONUMENT RECORD – GRANT COUNTY, WI
Section 3, Town 3 North Range 1 West, Town of Platteville

CERTIFICATE

I, Larry L. Austin, do hereby certify that the corner location on this record was determined by me and/or under my direct supervision and that this U.S. public land survey monument record is correct and complete to the best of my knowledge and belief.

Dated this 10th day of August 2008

Larry L. Austin
 Larry L. Austin S-1903



● = CORNER LOCATION

HISTORY OF CORNER ESTABLISHMENT

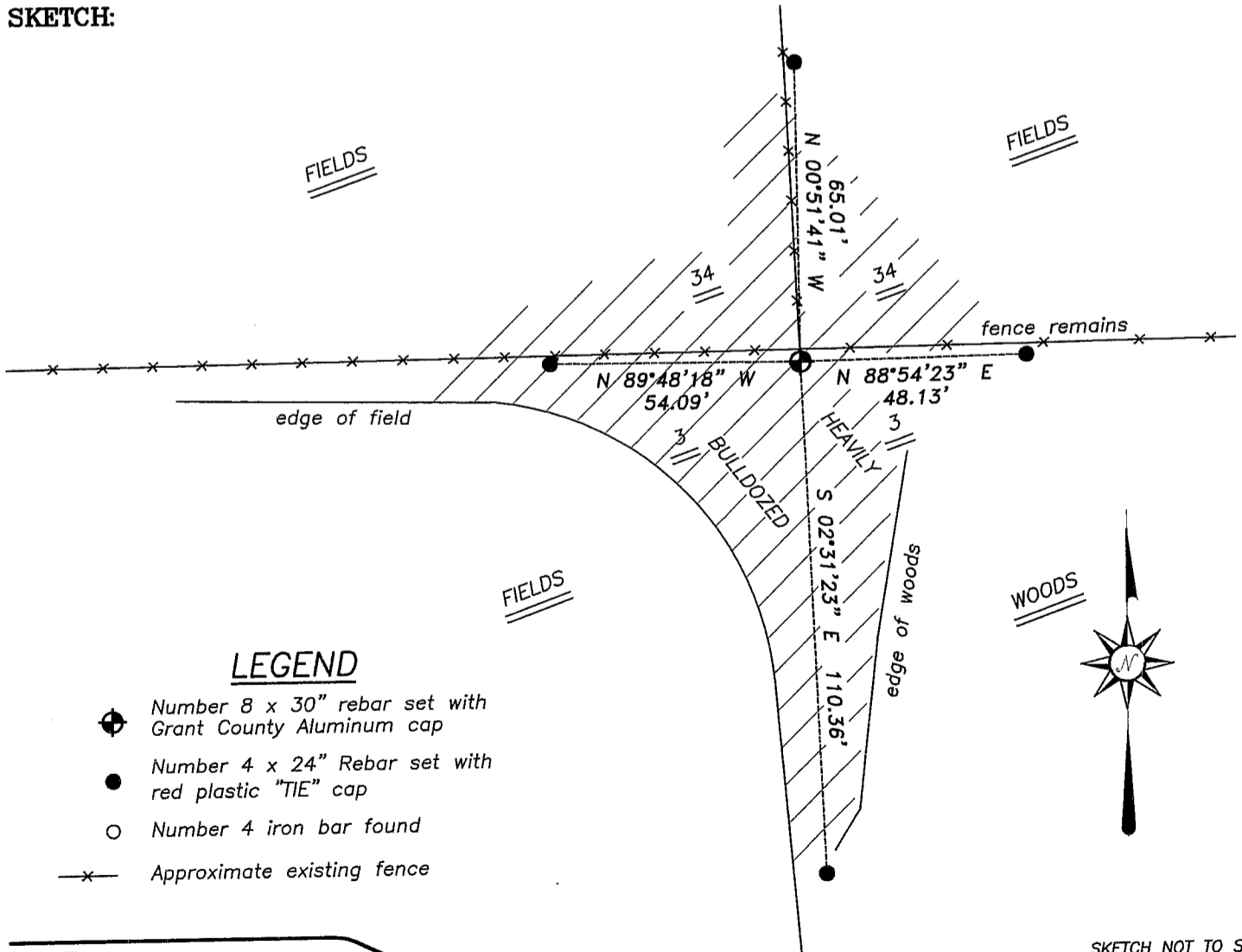
Corner was originally set in 1833 by Clark. In 1995 I set a Grant County Aluminum Monument at this location. No other record of the corner was found.

DESCRIPTION OF CORNER EVIDENCE FOUND

The area of the corner was heavily bulldozed. The ties and monument were all obliterated. I reset the corner based on previous surveys in the area. Verified this location using EDM & GPS methods.

DESCRIPTION OF CORNER AND WITNESS MONUMENTS, references and accessories used to perpetuate the original or re-established location of this corner. Witnesses to corner location Bobby Sedgwick & Brad Digman & Shane Austin

SKETCH:



Austin Engineering LLC

4211 HWY 81 E, LANCASTER, WI 53813
 PHONE 608-723-6363 FAX 608-723-6702

JOB NUMBER 05S050
 FIELDBOOK: TDSR, 2512
 G:\GRANTDOT\T3NR1W
 H:\TIE\T3NR1W\06

DRAWN BY: SW AUSTIN
 APPROVED: LL AUSTIN