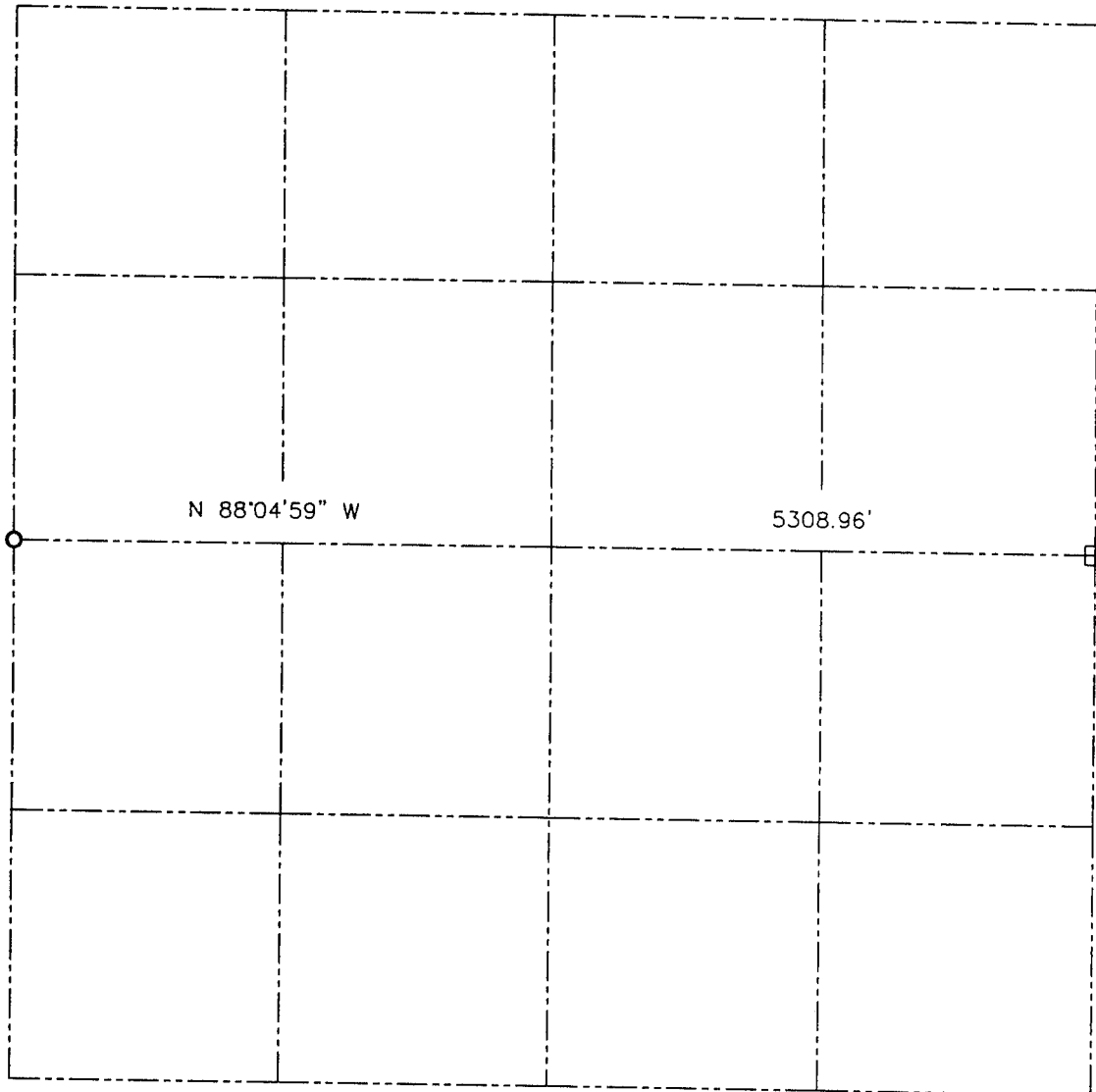


**U.S. PUBLIC LAND SURVEY MONUMENT RECORD – GRANT COUNTY, WI**  
**Summary of Section 12, Town 2 North, Range 3 West, Town of Potosi**

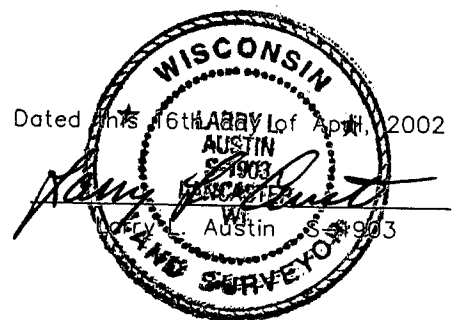


**LEGEND**

- No. 6 rebar found
- ◻ Bernsten Cast Aluminum Monument found



Relationship of all section corners to other section corners shall be shown hereon by bearing and distance or grid coordinates. Bearing reference shown below.



Bearings referenced to the East–West Quarter line of Section 12, which is assumed to bear N 89°04'59" W.

SKETCH NOT TO SCALE

Austin Engineering, LLC  
 4211 HWY 81 EAST, LANCASTER, WI 53813  
 PHONE 608-723-6363 FAX 608-723-6702

FIELDBOOK: SDR33, 2106A  
 G: \T2NR3W\12  
 C: \SWA\TIE\T2NR3W\12SUM

CREW: BS-SB-SA-BD  
 DRAWN BY: SW AUSTIN  
 APPROVED: LL AUSTIN