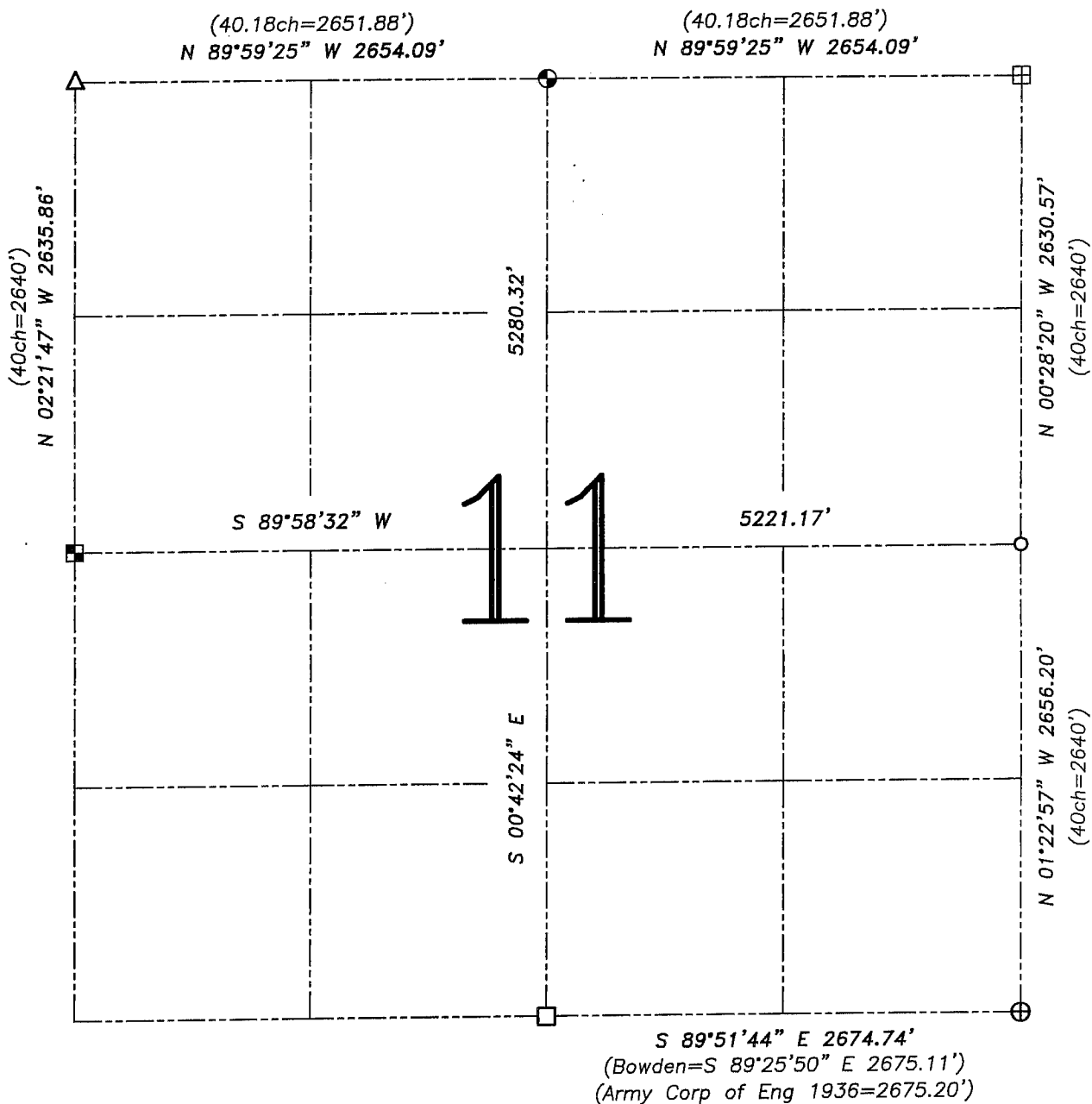


U.S. PUBLIC LAND SURVEY MONUMENT RECORD – GRANT COUNTY, WI

Summary of Section 11, Town 2 North, Range 3 West, Town of Potosi



LEGEND

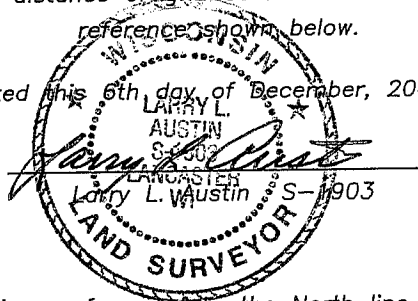
- ⊕ No. 8 rebar found with Grant County Aluminum Cap
- ⊙ No. 8 x 30" rebar set with Grant County Aluminum Cap – wt=2.67#/l.f.
- No. 6 rebar found
- No. 10 rebar found
- Aluminum Monument found with Grant County Aluminum Cap
- ⊞ Bernsten Cast Aluminum Monument found
- △ 1" diameter iron pipe found

() Recorded as

—x— Approximate location of existing

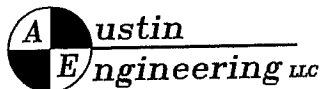
Relationship of all section corners to other section corners shall be shown hereon by bearing and distance or grid coordinates. Bearing reference shown below.

Dated this 6th day of December, 2004



Bearings referenced to the North line of the NE 1/4 of this Section, which is assumed to bear N 89°59'25" W.

SKETCH NOT TO SCALE



4211 HWY 81 E, LANCASTER, WI 53813
PHONE 608-723-6363 FAX 608-723-6702

JOB NUMBER 04S180
FIELDBOOK: TSDR, 2408
G:\T2NR3W\12
H:\TIE\T2NR3W\44

DRAWN BY: SW AUSTIN
APPROVED: LL AUSTIN