

U.S PUBLIC LAND SURVEY MONUMENT RECORD - GRANT COUNTY, WI SECTION 11, TOWN 02 NORTH, RANGE 03 WEST, TOWN OF POTOSI (a)

NOTE: THIS FORM IS INTENDED AND DESIGNED TO FULFILL ALL REQUIREMENTS OF THE WISCONSIN ADMINISTRATIVE CODE CHAPTER A-E 7.08, U.S. PUBLIC LAND SURVEY MONUMENT RECORD (3) (a) (b) (c) (d) (e) (f) (g) (h) (i).

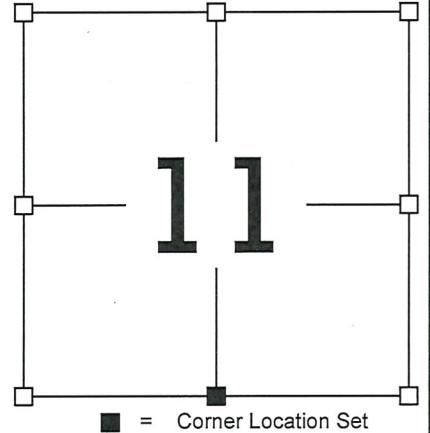
CERTIFICATE: (i)

I, STANLEY J. KING, DO HEREBY CERTIFY THAT THE CORNER LOCATION ON THIS RECORD WAS DETERMINED BY ME AND/ OR UNDER MY DIRECT SUPERVISION AND THAT THIS U.S PUBLIC LAND SURVEY MONUMENT RECORD IS CORRECT AND COMPLETE TO THE BEST OF MY KNOWLEDGE AND BELIEF.

DATED THIS 29th DAY OF June, 2022

Stanley J. King
STANLEY J. KING, S-2001
DELTA 3 ENGINEERING, INC.
875 S. CHESTNUT STREET
PLATTEVILLE, WISCONSIN 53818
KINGS@DELTA3ENG.BIZ

GRANT COUNTY CORNER
ID: 23044



HISTORY OF CORNER ESTABLISHMENT:

CORNER WAS ORIGINALLY SET IN THE YEAR 1833 BY LUCIUS LYON. IN 1849 STUNTZ SET NEW BEARINGS TO THE CORNER. IN 1876 BARBER ALSO TIED TO THIS CORNER WHILE SURVEERING IN SECTION 14. IN 1936 THE ARMY CORP. OF ENGINEERS TIED TO THE CORNER IN CONJUNCTION WITH FLOWAGE WASEMENTS. IN 1972 RALPH ALSO TIED TO THIS CORNER. BRUCE BOWDEN RE-SET THE CORNER IN 1977. LARRY AUSTIN MADE RECORD OF THE CORNER IN 2004.

DESCRIPTION OF CORNER EVIDENCE FOUND: (b) (f) (g) (h)

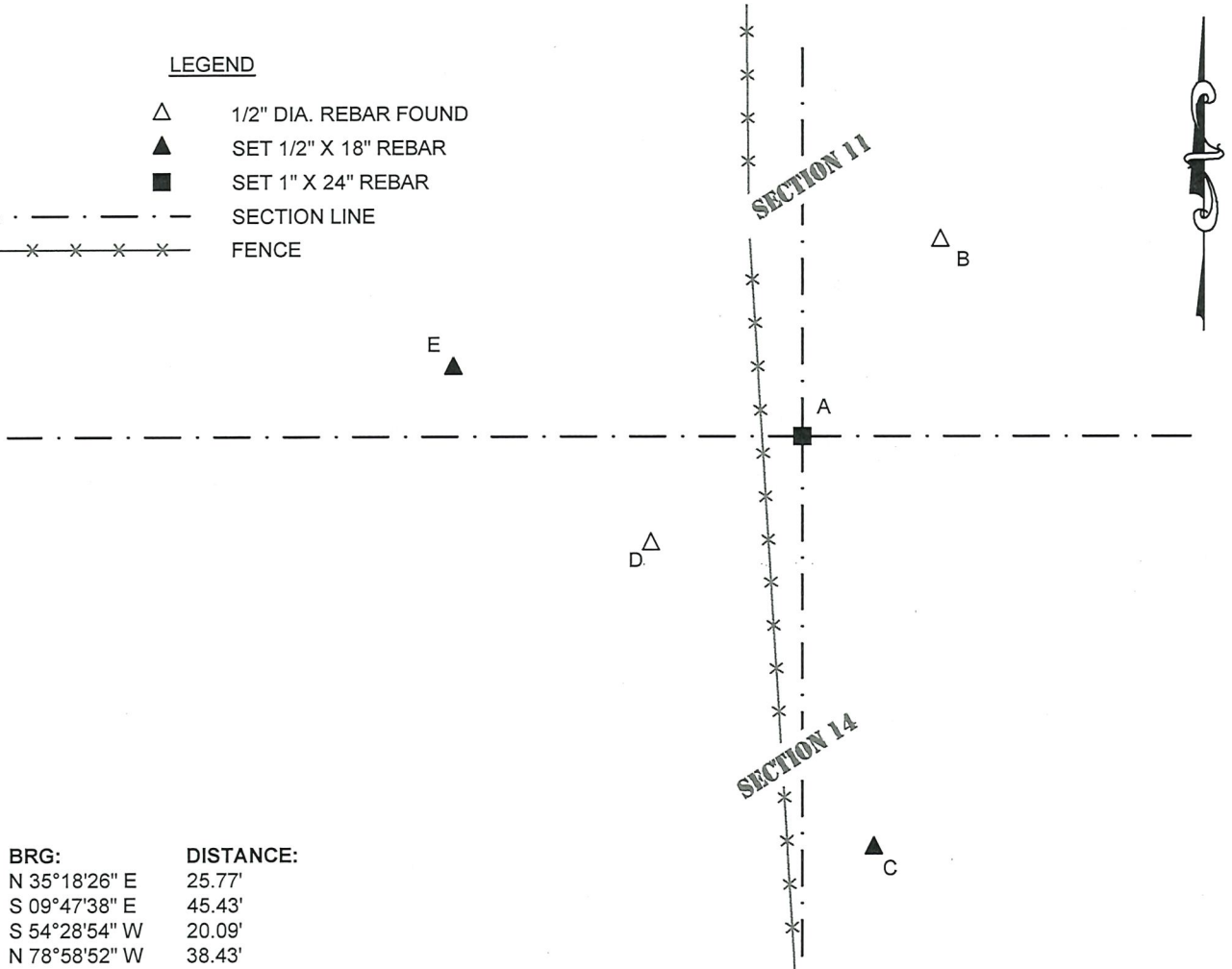
FOUND TWO WITNESS MONUMENTS AS SHOWN BELOW SET BY LARRY AUSTIN. SET CORNER VERIFIED WITH CSM 1112 BY LARRY AUSTIN IN 2004. SET 2 ADDITIONAL WITNESS MONUMENTS. LOCATION VERIFIED BY MULTIPLE GPS OBSERVATIONS AND VERIFICATION OF FOUND WITNESS MONUMENTS.

DESCRIPTION OF CORNER AND WITNESS MONUMENTS REFERENCES AND ACCESSORIES USED TO PERPETUATE THE ORIGINAL OR RE-ESTABLISHED LOCATION OF THIS CORNER: (c) (d) (e)

SKETCH:

LEGEND

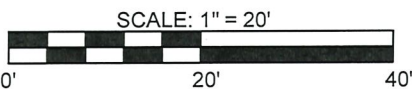
- Δ 1/2" DIA. REBAR FOUND
- \blacktriangle SET 1/2" X 18" REBAR
- \blacksquare SET 1" X 24" REBAR
- . - . - . - . - . SECTION LINE
- x - x - x - x - FENCE



LINE:	BRG:	DISTANCE:
A-B	N 35°18'26" E	25.77'
A-C	S 09°47'38" E	45.43'
A-D	S 54°28'54" W	20.09'
A-E	N 78°58'52" W	38.43'

GRANT COUNTY COORDINATES: (NAD 83 (2011))
NORTHING: 452,636.79
EASTING: 824,148.75

WITNESS TO THE CORNER LOCATION: A.LOEFFELHOLZ
DELTA 3 PROJECT NUMBER: D22-076
FIELD BOOK: 2021 #6
DATE OF FIELDWORK: 5/19/2022



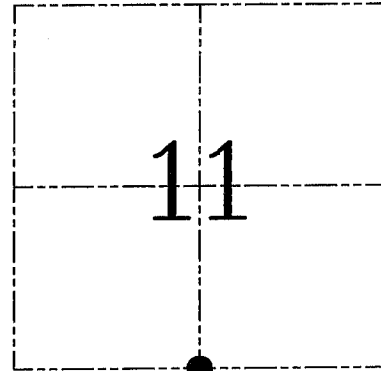
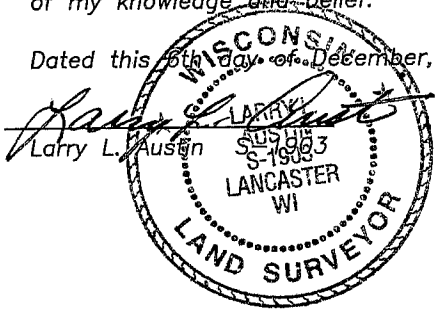
U.S. PUBLIC LAND SURVEY MONUMENT RECORD – GRANT COUNTY, WI

Section 11, Town 2 North Range 3 West, Town of Potosi

CERTIFICATE

I, Larry L. Austin, do hereby certify that the corner location on this record was determined by me and/or under my direct supervision and that this U.S. public land survey monument record is correct and complete to the best of my knowledge and belief.

Dated this 6th day of December, 2004



● = CORNER LOCATION

HISTORY OF CORNER ESTABLISHMENT

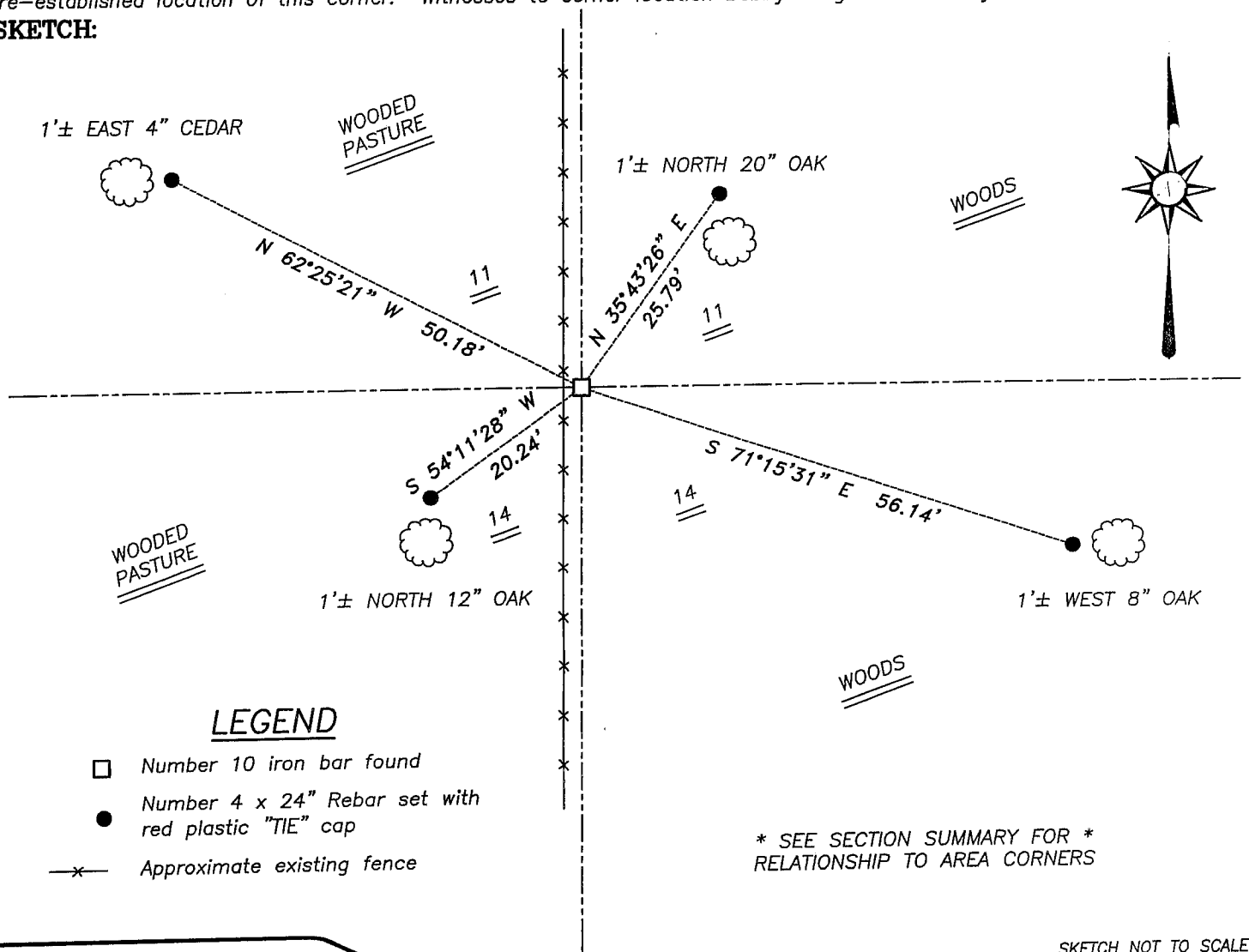
Corner was originally set in 1833 by Lyon. In 1849 Stuntz set new bearings to the corner. In 1876 Barber also tied to this corner while surveying in Section 14. In 1936 the Army Corp. of Engineers tied to the corner in conjunction with flowage easements. In 1972 Ralph also tied to this corner. In 1977 Bowden set a Number 10 iron bar.

DESCRIPTION OF CORNER EVIDENCE FOUND

I found Bowden's Number 10 iron bar and accepted it's location after an EDM & GPS traverse of the area.

DESCRIPTION OF CORNER AND WITNESS MONUMENTS, references and accessories used to perpetuate the original or re-established location of this corner. Witnesses to corner location Bobby Sedgwick & Shelby Blindert & Brad Digman

SKETCH:

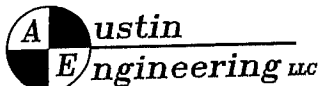


LEGEND

- Number 10 iron bar found
- Number 4 x 24" Rebar set with red plastic "TIE" cap
- x- Approximate existing fence

* SEE SECTION SUMMARY FOR *
RELATIONSHIP TO AREA CORNERS

SKETCH NOT TO SCALE



4211 HWY 81 E, LANCASTER, WI 53813
PHONE 608-723-6363 FAX 608-723-6702

JOB NUMBER 04S180
FIELDBOOK: TSDR, 2408
G:\T2NR3W\12
H:\TIE\T2NR3W\44

DRAWN BY: SW AUSTIN
APPROVED: LL AUSTIN