

U. S. PUBLIC LAND SURVEY MONUMENT RECORD

INSTRUCTIONS : This record shall show the location of the corner and shall include all of the following nine elements (a through i).

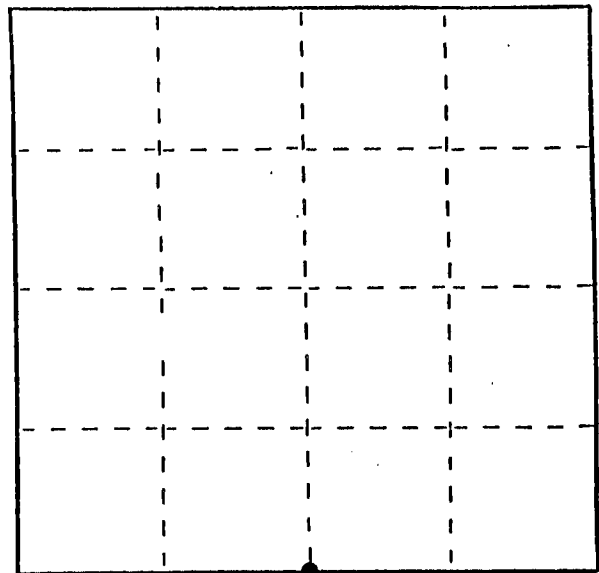
- (a) Identify the corner by reference to the U.S. public land survey system.
 ● = Corner monument restored.

S 1/4 Corner of Section 5

T 2 N R 3 W

Town of Potosi (South Part)

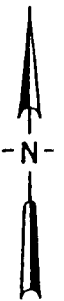
Grant Co., Wis.



Section 5 T2N R3W

- (b) Describe any record evidence, monument evidence, occupational evidence, testimonial evidence or any other material evidence you considered, and whether the monument was found or placed. Original corner by Lucius Lyon in the 1st 1/4 of 1833. A survey by Charles Sampson in April, 1900 showed he found the stumps of the bearing trees at the center of the section by R, Huntz in 1845, of which I found no record. This survey, by Sampson, runs from the center, South to the railroad tracks, and gives no ties or reference to this South 1/4 corner. The Corps of Engineers (War Department) map shows no pertinent information, it does show, by contour, this location to be correct, and also shows a fence North of the Grant river, and South of the highway to be East of the N-S 1/4 line. A survey by David Krohn, stamped by Homer Ralph Jr., follows the existing fencelines, commencing at a fence corner at the NE Corner of Govt. Lot 3. I subsequently computed the location of the SW corner, now in the Mississippi, and placed the S1/4 corner midway with the SE corner of the section.
- (c) In the plan view drawing below, provide reference ties to at least 4 witness monuments, or, if the location is within a municipality, to at least 2 witness monuments. (Witness monuments shall be made of concrete, natural stone, iron or other equally durable material.) Describe witness monuments.
- (d) Show a plan view drawing depicting the relevant monuments and reference ties which is sufficient in detail to enable accurate relocation of the corner monument if the corner monument is disturbed. Indicate north.

Scale: 1" = 100'



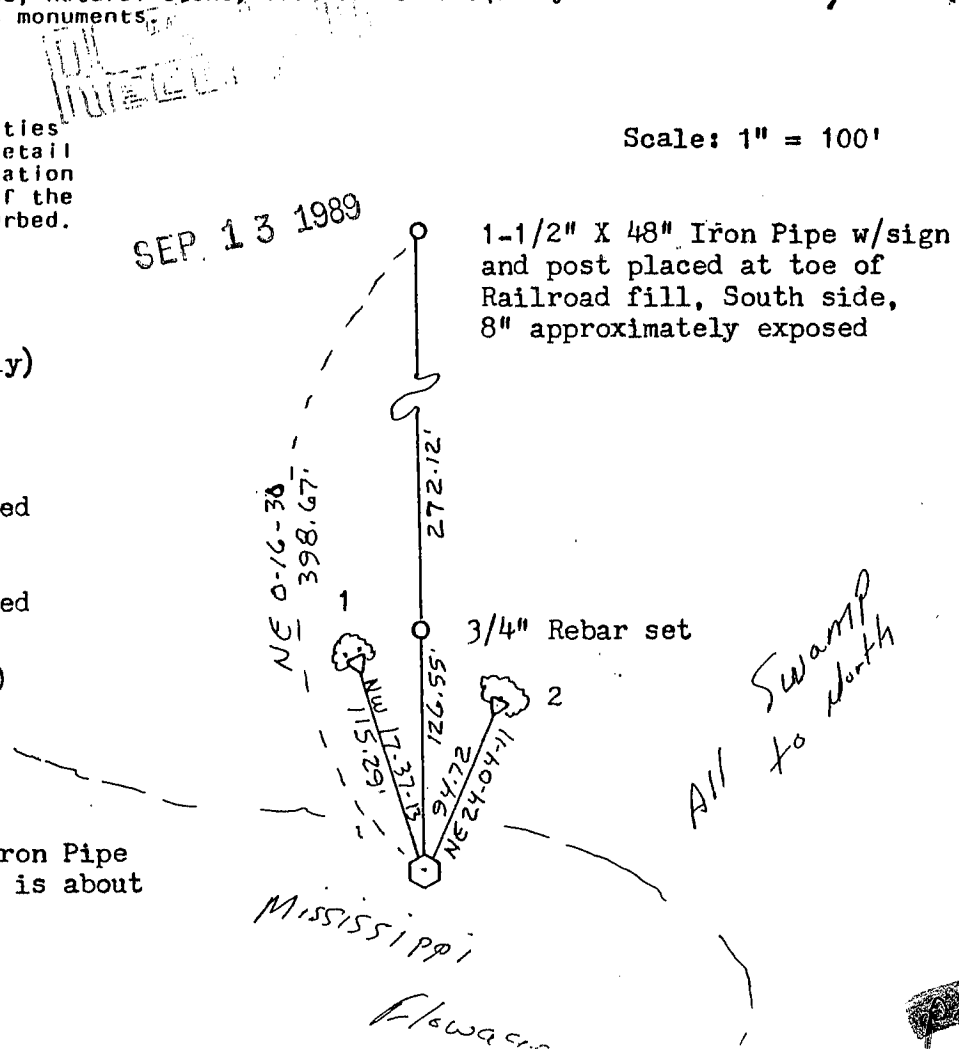
(Bearings shown are for orientation purposes only)

1= 60# Spike set in blazed 8" Maple (Twin)

2= 60# Spike set in blazed 12" Maple

(Spikes set in base)

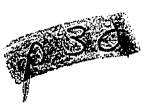
Corner is 1-1/2" X 60" Iron Pipe with sign and post, pipe is about 6" above water level.



SEP. 13 1989

All Swamp to North

MISSISSIPPI
 Flowage



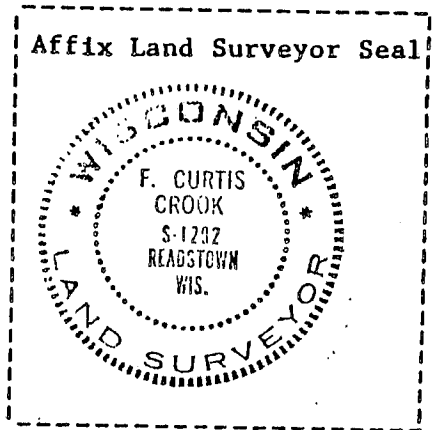
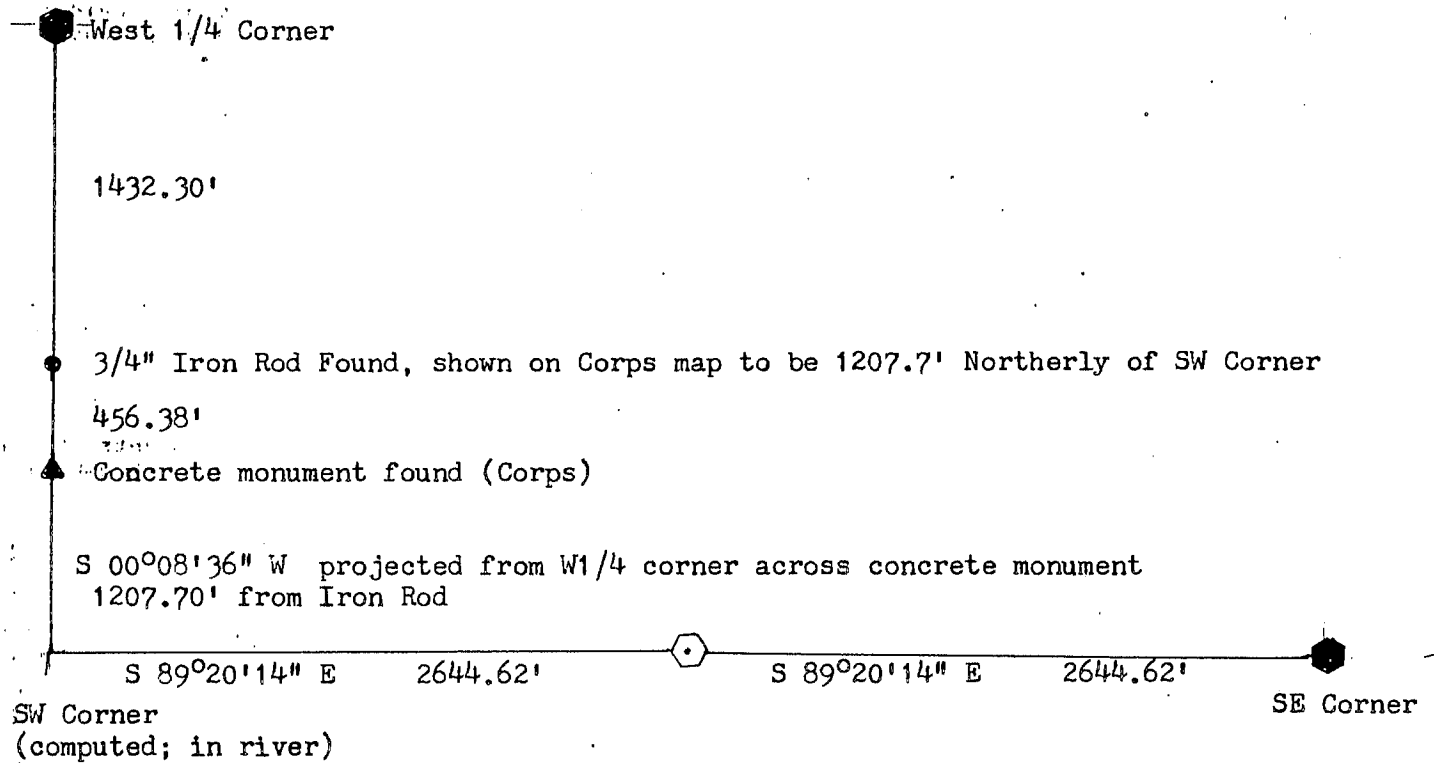
(e) Describe any material discrepancy between the location of the corner as restored or reestablished and the location of that corner as previously restored or reestablished by distance and direction. Show the discrepancy on the plan view drawing under (d), above. Show the distances between the corner as previously restored or reestablished and (1) the corner as restored or reestablished, and (2) to at least 2 of the witness monuments shown on the drawing in (d), above.

NONE

(f) Was the corner restored through acceptance of (1) an obliterated evidence location, or, (2) a found perpetuated location?

Obliterated evidence location

(g&h) Was the corner reestablished through lost corner proportionate methods? If so, show the method, including the directions and distances to other public land survey corners used as evidence or used for proportioning in determining the corner location?



(1) I, F. Curtis Crook
(type or print name) certify that the corner location shown on this record was determined by me or under my direction and control and that this U.S. Public Land Survey Monument Record is correct and complete to the best of my knowledge and belief.

F. Curtis Crook 5-25-89