

U.S. PUBLIC LAND SURVEY MONUMENT RECORD – GRANT COUNTY, WI

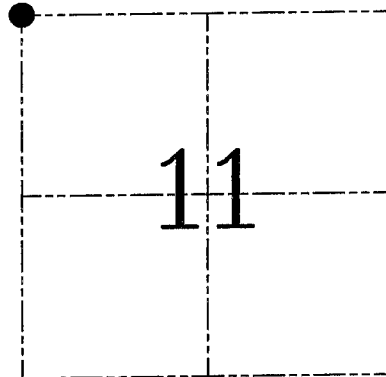
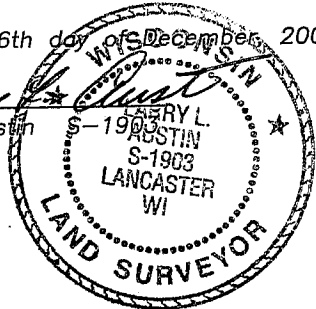
Section 11, Town 2 North Range 3 West, Town of Potosi

CERTIFICATE

I, Larry L. Austin, do hereby certify that the corner location on this record was determined by me and/or under my direct supervision and that this U.S. public land survey monument record is correct and complete to the best of my knowledge and belief.

Dated this 6th day of December, 2004

Larry L. Austin
Larry L. Austin



● = CORNER LOCATION

HISTORY OF CORNER ESTABLISHMENT

Corner was originally set in 1833 by Lyon. In 1849 Stuntz tied to the corner with no mention of monument. Many recent surveys tied to the corner mentioning a 1" iron pipe.

DESCRIPTION OF CORNER EVIDENCE FOUND

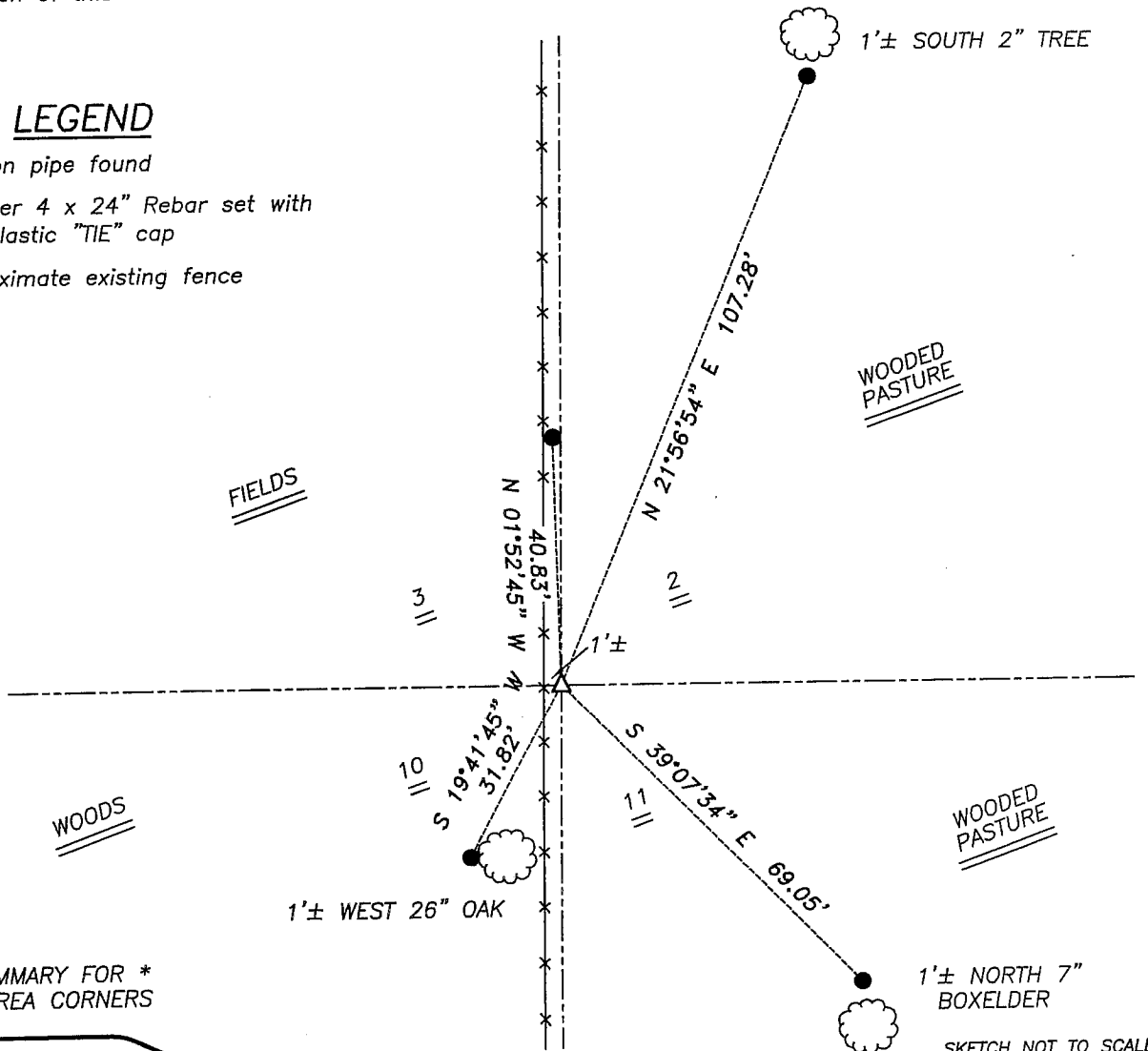
I found the existing 1" iron pipe and accepted it after an EDM & GPS traverse of the area. This location fit well with adjoining corners.

DESCRIPTION OF CORNER AND WITNESS MONUMENTS, references and accessories used to perpetuate the original or re-established location of this corner. Witnesses to corner location Bobby Sedgwick & Shelby Blindert & Brad Digman

SKETCH:

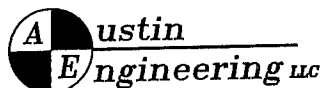
LEGEND

- △ 1" Iron pipe found
- Number 4 x 24" Rebar set with red plastic "TIE" cap
- x— Approximate existing fence



SKETCH NOT TO SCALE

* SEE SECTION SUMMARY FOR *
RELATIONSHIP TO AREA CORNERS



4211 HWY 81 E, LANCASTER, WI 53813
PHONE 608-723-6363 FAX 608-723-6702

JOB NUMBER 04S180
FIELDBOOK: TSDR, 2408
G:\T2NR3W\12
H:\TIE\T2NR3W\25

DRAWN BY: SW AUSTIN
APPROVED: LL AUSTIN