

**U.S. PUBLIC LAND SURVEY MONUMENT RECORD - GRANT COUNTY, WI**

Section 12, Town 2 North Range 3 West, Town of Potosi (a)

NOTE: This form is intended and designed to fulfill all requirements of the Wisconsin Administrative Code Chapter A-E 7.08, U.S. Public Land Survey Monument Record (3) (a) (b) (c) (d) (e) (f) (g) (h) (i).

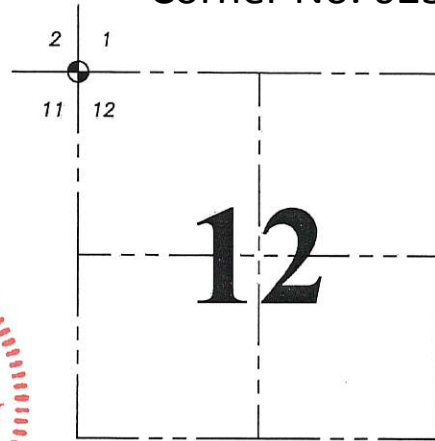
**Corner No. 023**

CERTIFICATE: (i)

I, Aaron J. Austin, Wisconsin Professional Land Surveyor, do hereby certify that the corner location on this record was determined by me and/or under my direct supervision and that this U.S. Public Land Survey Monument Record is correct and complete to the best of my knowledge and belief.

Dated this 13th day of February, 2017.

*Aaron J. Austin*  
 Aaron J. Austin, S-2922



⊙ = CORNER LOCATION

HISTORY OF CORNER ESTABLISHMENT:

Original corner was set in 1833 by Lucius Lyon.  
 Timothy Moore reset the corner and prepared a Survey Monument Record dated 3-8-1988.

DESCRIPTION OF CORNER EVIDENCE FOUND: (b) (f) (g) (h)

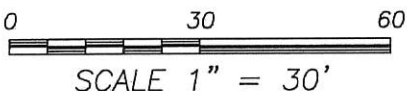
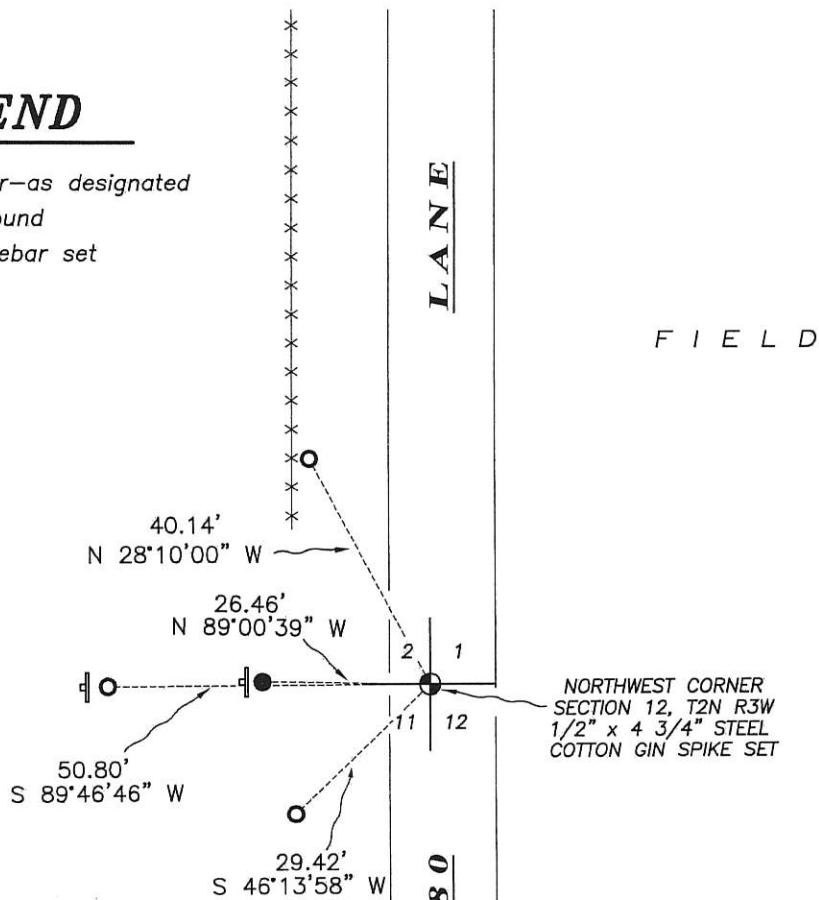
I reset a Cotton Gin Spike at the surface of the road based upon 3 witness corners found from Timothy Moore Survey Monument Record. I set one additional witness corner after I verified the corner's location with G.P.S. and E.D.M. methods.

DESCRIPTION OF CORNER AND WITNESS MONUMENTS, references and accessories used to perpetuate the original or re-established location of this corner. (c) (d) (e)  
 Witnesses to corner location Shane Austin.

SKETCH:

**LEGEND**

- ⊙ Section Corner—as designated
- 3/4" rebar found
- 3/4" x 18" rebar set
- ⊥ Existing sign
- x-x- Existing fence



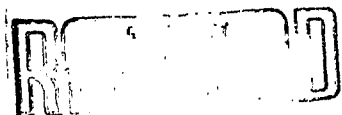
# U. S. PUBLIC LAND SURVEY MONUMENT RECORD

INSTRUCTIONS: This record shall show the location of the corner and shall include all of the following nine elements (a through i).

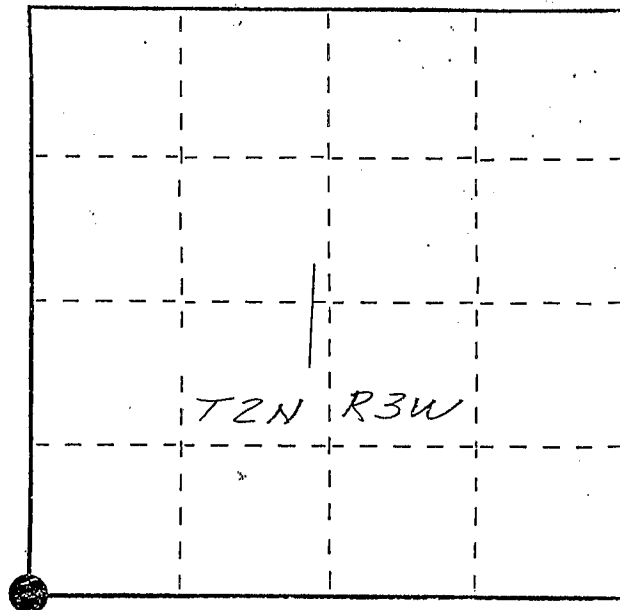
(a) Identify the corner by reference to the U.S. public land survey system.

⊙ = Corner monument restored.

SW corner section 1  
T2N R3W of the  
4th P.M.  
Town of Potosi  
Grant County, Wisconsin



APR 27, 1988

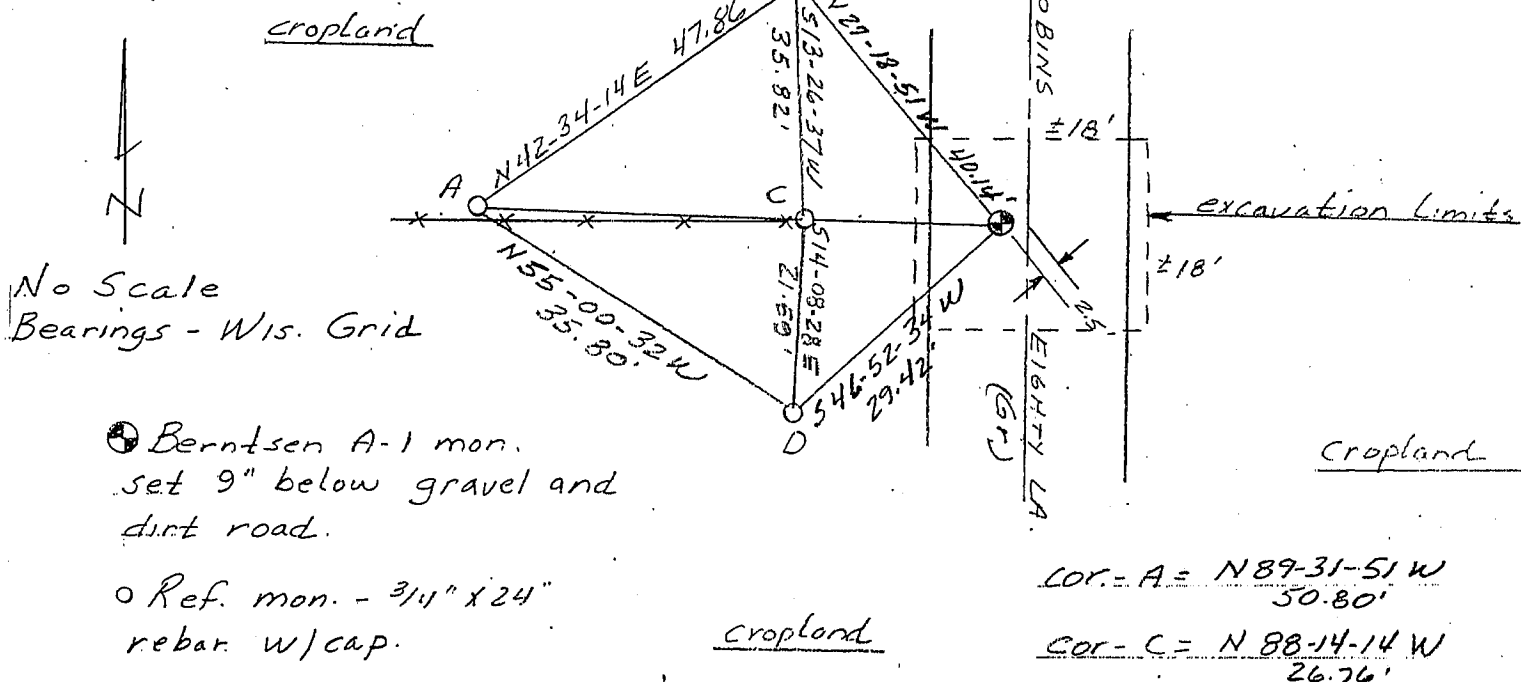


(b) Describe any record evidence, monument evidence, occupational evidence, testimonial evidence or any other material evidence you considered, and whether the monument was found or placed.

Excavated at site and found remains of a cedar post. Accepted this as evidence of corner. Location fits occupation lines and agrees with other corners reestablished in the section.

(c) In the plan view drawing below, provide reference ties to at least 4 witness monuments, or, if the location is within a municipality, to at least 2 witness monuments. (Witness monuments shall be made of concrete, natural stone, iron or other equally durable material, ~~except wood.~~) Describe witness monuments.

(d) Show a plan view drawing depicting the relevant monuments and reference ties which is sufficient in detail to enable accurate relocation of the corner monument if the corner monument is disturbed. Indicate north.



(e) Describe any material discrepancy between the location of the corner as restored or reestablished and the location of that corner as previously restored or reestablished by distance and direction. Show the discrepancy on the plan view drawing under (d), above. Show the distances between the corner as previously restored or reestablished and (1) the corner as restored or reestablished, and (2) to at least 2 of the witness monuments shown on the drawing in (d), above.

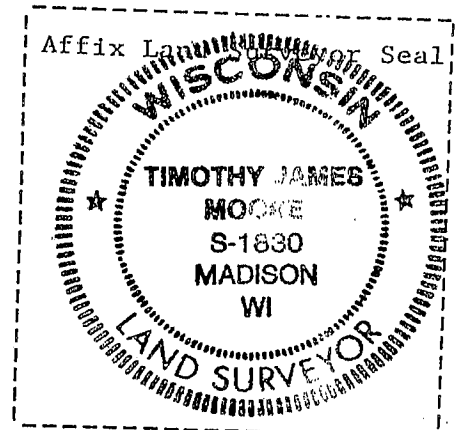
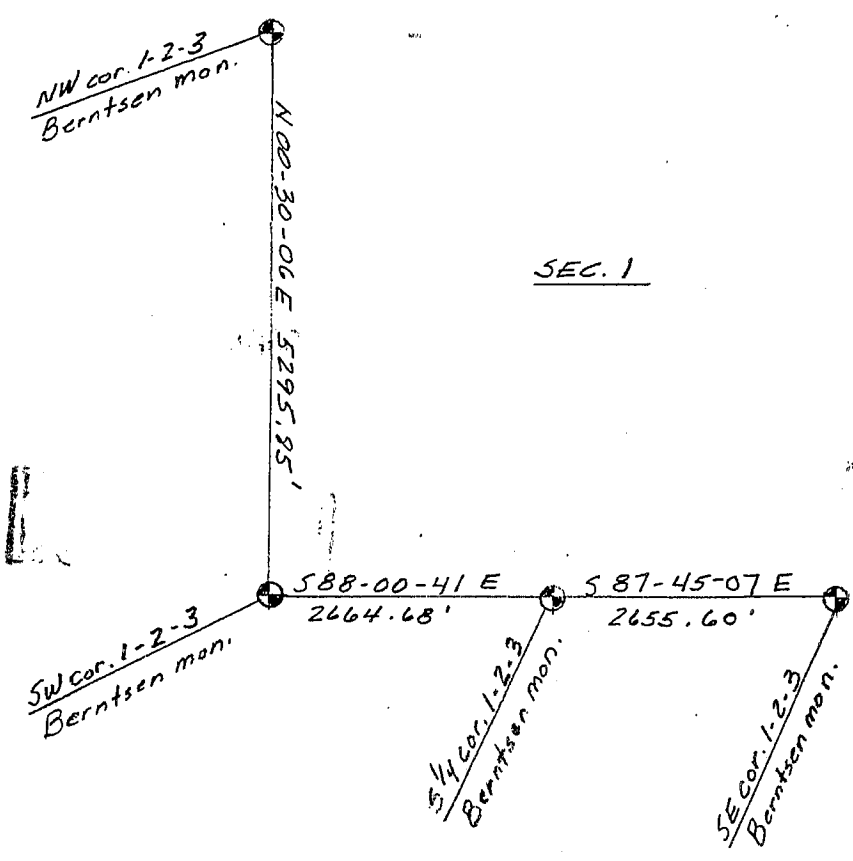
(f) Was the corner restored through acceptance of (1) an obliterated evidence location, or, (2) a found perpetuated location?

*Found and accepted wood post remains as corner. Post may be remains of original corner or perpetuated corner.*

(g&h) Was the corner reestablished through lost corner proportionate methods? If so, show the method, including the directions and distances to other public land survey corners used as evidence or used for proportioning in determining the corner location?



No Scale  
Bearings - Wis. Grid



(1) I, Timothy J. Moore  
(type or print name) certify that the corner location shown on this record was determined by me or under my direction and control and that this U.S. Public Land Survey Monument Record is correct and complete to the best of my knowledge and belief.

Timothy J. Moore  
Signature

3-8-88  
Date