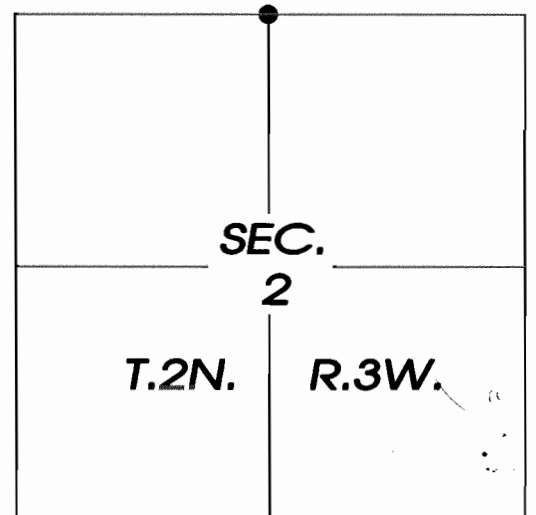


U.S. PUBLIC LAND SURVEY MONUMENT RECORD - GRANT COUNTY, WI.

I, RONALD J. COMBS, DO HEREBY CERTIFY THAT THE CORNER LOCATION ON THIS RECORD WAS DETERMINED UNDER MY DIRECT SUPERVISION AND THAT THIS U.S. PUBLIC LAND SURVEY MONUMENT RECORD IS CORRECT TO THE BEST OF MY KNOWLEDGE AND BELIEF.

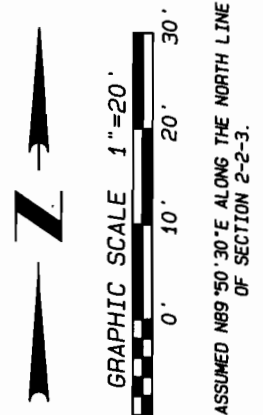
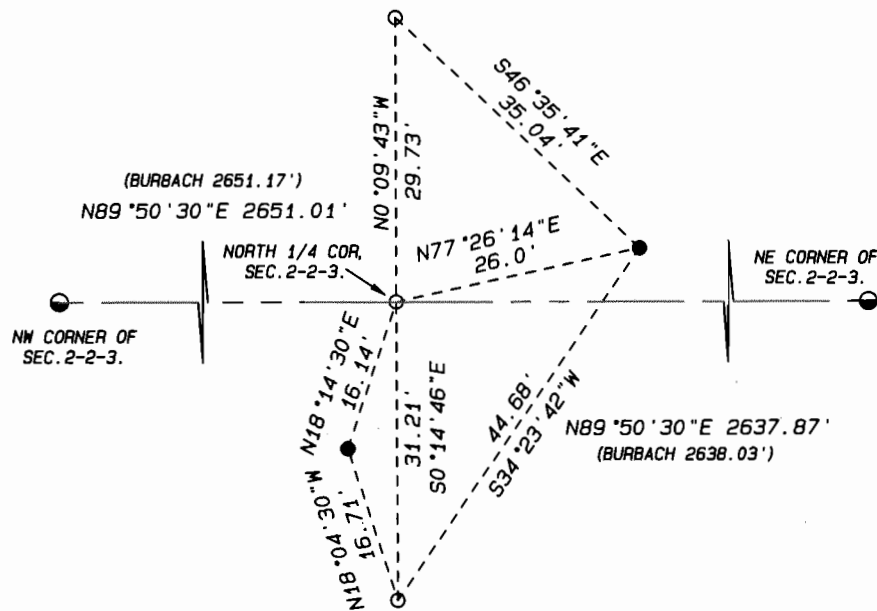
DATED THIS 21ST DAY OF DECEMBER, 2010.

Ronald J. Combs
 RONALD J. COMBS, RLS No. 1330



● = CORNER MONUMENT RESTORED.

DAVID BURBACH SET A BERNSTEN MONUMENT ON A STRAIGHT LINE BETWEEN SW CORNER AND SE CORNER OF SECTION AND AT THE INTERSECTION OF AN ANCIENT NORTH-SOUTH FENCE. I DID NOT FIND THIS MONUMENT. I SET A 3/4" x 24" ROUND IRON PIN ON SAID STRAIGHT LINE AND AT PROPORTIONATE DISTANCES FROM SAID CORNERS. I SET 2 ADDITIONAL REFERENCE MONUMENTS.



LEGEND:

- SET IRON PIN, 3/4" x 24", 1.5 LBS./LIN.FT.
- FOUND IRON PIN
- FOUND D.O.T. MONUMENT

DATE: DECEMBER 21, 2010



- LAND SURVEYING
- LAND PLANNING
- CIVIL ENGINEERING

109 W. Milwaukee St.
 Janesville, WI 53548
 www.combsurvey.com

tel: 608 752-0575
 fax: 608 752-0534